

# thechronicle

TEMPLE BETH EL OF BOCA RATON

JANUARY/FEBRUARY 2019 | TEVET/SH'VAT/ADAR 5779

## *engaging the* **OTHER**

*across the* **DIVIDE**  
*across the* **OCEAN**  
*across the* **STREET**

*Pages 3, 8 & 9*

**BETH EL  
BASH**  
*page 5*

**FEELIN'  
GROOVY  
CONCERT**  
*page 7*

**VISITING  
SCHOLARS**  
*pages 10-11*



# AMERICAN HERITAGE SCHOOL

KNOWLEDGE, INTEGRITY, COMPASSION



## Give Your Child the Best in College Prep

# OPEN HOUSE

**Tuesday, February 5th**

**9:00 a.m.**

**PK3 - 5th grades**

**Saturday, February 9th**

**10:00 a.m.**

**6th - 12th grades**

Boca/Delray Campus | 561-495-7272

[www.ahschool.com](http://www.ahschool.com)



# Different Paths

BY RABBI DAN LEVIN  
dlevin@tbeboca.org

When I was younger, my parents would take us on vacation to Skyline Drive in the Shenandoah mountains in Virginia. Over the years, we would find that certain hikes became our favorites. We looked forward to hiking the familiar trails and to revisiting the rewarding views from the summit.

One time, we decided to take a different path to a favorite summit. This trail was longer and more challenging. Some of us wanted to take the familiar path, and others wanted to take the more challenging trail. So we compromised. “We’ll meet you at the top,” we said, and we each took our separate paths.

God.” Even though they disagreed, there was holiness and truth to be found in their separate wisdom.

But the law, the Talmud teaches, follows *Beit Hillel*. Why? Was he smarter? Did he understand God’s will better? No, the reason why we follow *Beit Hillel* is because “they were kindly and modest, they studied their own rulings and those of *Beit Shammai*, and were even so [humble] as to mention the actions of *Beit Shammai* before theirs...”

I love when I get to spend time with members of our congregation and learn about their individual journeys. I find that I grow so much from seeing



alternate paths are not just different, but wrong. We refuse to venture off our familiar trails and begin to suspect the motives, intentions, or beliefs of those who see the world differently than we do. The fractures we see in our society, and the divisiveness we experience threaten to drive wedges that can literally tear us and our people apart.

Temple Beth El needs to be a place safe enough for us to explore our differences. For thousands of years, the rabbis believed in the holy value of engaging in debate and discussion, especially with those with whom we disagreed. The Talmud teaches in Pirke Avot 5:17 that “any argument that is for the sake of heaven, the wisdom it gleans will endure.” An example? The arguments between Hillel and Shammai.

I invite you to join me in a project to begin to heal our divides, to help us better understand each other, and to grow from the different perspectives and wisdom we all possess. For the last year, a wonderful task-force has been creating a process for us to practice **Civil Discourse** in our congregation. Together we will learn the practice of reflective dialogue and create safe structures to explore the issues of our day. See page 8 for more details.

Perhaps we might learn from Robert Frost’s famous wisdom: “Two roads diverged in a wood and I — I took the road less traveled by, And that has made all the difference.”

---

Temple Beth El needs to be a place **safe** enough for us to **explore our differences**. For thousands of years, the rabbis believed in the holy value of **engaging** in **debate** and **discussion**, especially with those with whom we **disagreed**.

---

Each of us in our journeys through life follows a path. The paths we choose take us in different directions. They lead us to pursue different careers, to live in different places, to learn different languages, to cook different foods, to adopt different cultures and to embrace different beliefs. Often, those separate paths lead to the same summit.

The Talmud teaches in tractate Eruvin that for years there was a dispute between the schools of Hillel and Shammai, with each asserting that Jewish law should follow their opinions. Eventually a *Bat-Kol* – a voice from heaven – came down and said: “*Elu V’Elu Divrei Elohim Chayim* – These and those are the words of the living

the world through someone else’s eyes, and I understand my own life so much better from learning about someone else’s journey.

It is easy to fall in love with familiar paths. Familiarity breeds comfort. We feel a sense of safety and security in familiar surroundings and in experiencing what we’re accustomed to enjoy. Many of us like to return to favorite destinations because it feels like home. Like home, Temple Beth El is supposed to be a familiar place. In designing the renovations to our sanctuary, much attention was paid to maintaining a sense of the familiar, so that it still felt like home even if some elements were a little different.

But too often, we begin to believe that

# What is a Jewish Life Well Lived?

BY **MARK SUNSHINE**  
TEMPLE BETH EL PRESIDENT  
[msunshine@masunshine.com](mailto:msunshine@masunshine.com)



In November at Shabbat services, Rabbi Brockman talked about Judah Benjamin. Mr. Benjamin was a famous 19<sup>th</sup> century lawyer and, during the Civil War, Attorney General for the Confederate States.

He was also a Jew and perhaps the most engaged and connected American Jewish lawyer of the time.

Even though he fought for the Confederacy, Mr. Benjamin knew that slaves were human beings, made of flesh and blood and had human emotions and souls.

In an 1842 court filing Mr. Benjamin wrote:

“What is a slave? He is a human being. He has feelings and passion and intellect. His heart, like the heart of the white man, swells with love, burns with jealousy, aches with sorrow, pines under restraint and discomfort, boils with revenge, and ever cherishes the desire for liberty.”

Ironically, despite his clear words and understanding of Jewish values, Mr. Benjamin was himself a slave owner.

After the Civil War, rather than face criminal charges, Mr. Benjamin fled to London where he continued his legal career becoming a leading British barrister and member of the British aristocracy. In London, Mr. Benjamin continued to be engaged in the local community and was one of the most well-known English Jews.

Even so, Mr. Benjamin is now little remembered and as an advocate of human slavery most often considered an embarrassment to our people.

Mr. Benjamin is not an example of a Jewish life well lived nor is he an example

of how or why, as Jews, we are supposed to be actively engaged in our society, religion and culture.

By turning his back on the most basic of all Jewish teachings, the story of Passover and how we were once slaves and fought to be free, Mr. Benjamin proved that all engagement is not good engagement and the moral lessons from thousands of years ago are still relevant to modern times.

Today we debate moral and social issues which are frequently painted as political questions. But many of the questions of today aren't any more

---

Ironically, despite his **clear words** and understanding of **Jewish values**, Mr. Benjamin was himself a **slave owner**.

---

political than the question of slavery was more than 150 years ago.

I believe that one of the advantages of being Jewish is that our culture and traditions discern right from wrong and good from bad.

Mr. Benjamin, for all his legal accolades, did not make a positive difference to his community. He turned his back on Judaism and enslaved his fellow man despite knowing it was wrong. The lesson to be learned from Mr. Benjamin is that when we examine today's issues, we need to consider whether they are economic or moral, and if moral, keep faith with Jewish tradition and morality.

Engagement inconsistent with Judaism is worse than no engagement at all.



Mazel Tov to Rabbi Jessica  
on her marriage to Mitch Mates!

**Rabbi Jessica will now be known as Rabbi Jessica Spitalnic Mates.**

Please email her a mazel tov at [jmates@tbeboca.org](mailto:jmates@tbeboca.org)



SAVE  
THE  
DATE

# Beth El Bash

CELEBRATING 10 YEARS  
OF THE  
BECK FAMILY CAMPUS

HONORING  
**SUSAN & BARRY  
PODOLSKY**

*Saturday Evening*  
**APRIL 6, 2019**

**THE CELEBRATION CONTINUES**

*Sunday, April 7, 2019*

**RIBBON CUTTING | CAMPUS TOURS  
FUN ACTIVITIES FOR ALL  
MORE INFO TO FOLLOW**

Proceeds from the Beth El Bash will be used to establish a new *Special Needs Initiative* to meet the diverse academic and behavioral needs of our students from preschool through 12th grade, in addition to supporting our scholarship program. This special needs fund will allow us to enhance our educational program to include trained staff, learning tools and equipment, and teacher training.



## Benefactor Opportunities

### **\$50,000 Diamond Benefactor**

Table of 12, special recognition at The Bash and 2 full-page ads in the Diamond Section of the Tribute Journal

### **\$25,000 Ruby Benefactor**

Table of 12, special recognition at The Bash and 2 full-page ads in the Ruby Section of the Tribute Journal

### **\$15,000 Sapphire Benefactor**

Table of 10, special recognition at The Bash and 2 full-page ads in the Sapphire Section of the Tribute Journal

### **\$10,000 Platinum Benefactor**

Table of 10, special recognition at The Bash and 1 full-page ad in the Platinum Section of the Tribute Journal

### **\$5,000 Gold Benefactor**

6 dinner tickets, special recognition at The Bash and 1 full-page ad in the Gold Section of the Tribute Journal

### **\$2,500 Emerald Benefactor**

4 dinner tickets, special recognition at The Bash and 1 full-page ad in the Silver Section of the Tribute Journal

### **\$1,800 Bronze Benefactor**

2 dinner tickets, special recognition at The Bash and 1 full-page ad in the Bronze Section of the Tribute Journal

## Sponsorship Opportunities

\$25,000	Tent Sponsor
\$10,000	Band Sponsor
\$5,000	Decor Sponsor
\$2,500	DJ Sponsor
\$2,500	Photography Sponsor
\$2,500	Invitation Sponsor
\$2,500	Valet Sponsor

### **Tribute Journal Only**

\$5,000	Back Cover
\$2,500	Inside Front Cover
\$2,500	Inside Back Cover
\$1,000	Full page ad
\$750	Half page ad
\$500	Quarter page ad
\$250	Two line greeting
\$100	Name listing as a "Supporter"

For more information, go to [tbeboca.org/Beth-El-Bash](http://tbeboca.org/Beth-El-Bash) or call Leslie Viselman, Director of Development at 561-314-2836 or [LViselman@tbeboca.org](mailto:LViselman@tbeboca.org).

# Rabbi Levin's New Member Meet & Greet

**Sunday, February 17, 2019  
2:00-4:00pm**

*New members,  
look for your  
invitation  
in the mail*



All members new to Temple Beth El in the past year are invited to attend an open house at the clubhouse of Rabbi Dan and Aimee Levin.

Enjoy afternoon snacks and beverages while getting to know clergy, staff and other new members in our Temple Beth El family. This event welcomes singles, couples and families with children of all ages, and is a true reflection of our richly diverse and welcoming Beth El community. RSVP online at [tbeboca.org/special-events](http://tbeboca.org/special-events) or contact Elinor Josephson, Director of Engagement & Programming at [ejosephson@tbeboca.org](mailto:ejosephson@tbeboca.org) or 561-391-8900.

*The New Member Meet & Greet is hosted by our Membership Committee and generously underwritten by Sisterhood and Brotherhood.*



## *Welcome* NEW AND RETURNING MEMBERS

For help getting involved, please contact Elinor Josephson,  
Director of Engagement and Programming, at [ejosephson@tbeboca.org](mailto:ejosephson@tbeboca.org) or 561-391-8900.

Dikla and Hagai Altman and their  
children Emma and Noam

Rita Verbin and Joel Benjamin

Lorrie and Lloyd Berkowitz and their  
children Rachel, Aaron and Michael

Gaby and Edward Brill

Marian Unger-Davis and Stanford Davis

Chelsea Pickholtz and Jeremy Dicker

Joan Ehrlich

Esther Fingerman

Rachael Fushan

Julie and Lee Gleeman

Hedy and Arthur Goldberg

Rebecca and Seth Harlem and their son Elijah

Arthur Healy

Jennifer Herzog

Stacey and Jason Housenbold and  
their daughters, Falyn and Phoebe

Kathleen and Jeffrey Kassover

Hermine and Herbert Kolsby

Joanne and Gerald Kowitt

Charlotte and Jerry New

Barbara Perlmutter

Brett Raflowitz

Diane Rocklin and her daughters  
Adina and Julia

Wendy Rogers and her sons Dylan and Shane

Tammy and Mitch Ross and their  
children Joely and Zachary

Jay Rubin

Susan and David Schwarz

Crystal and Stuart Shanefield and  
their daughters Liat and Lila

Rachel and Benjamin Shaul

Alicia Gittleman and Yoel Silber  
and their son Liam

Christine and Michael Silveri and  
their children Giuliana and Luca

Shari Sternbach

Cathy and Lawrence Stevens

Eden and Greg Tabor

Minelle and Alfredo Tendler and their  
children Daniel and Julianna

Lois and Gary Weinstein



# Feelin' Groovy

## CANTOR LORI SHAPIRO & FRIENDS IN CONCERT

SUNDAY, FEBRUARY 10

3:00 PM

SCHAEFER

FAMILY CAMPUS

Enjoy our cantor's favorite Jewish pop composers — Carole King, Carly Simon, Paul Simon, Burt Bacharach and more! With guest singers including composer/performer, Dennis Lambert and Cantorial Soloist Michelle Auslander Cohen. Sing along to your favorite hits of the 60's, 70's and 80's to today. Meet today's grooviest Jewish composer, Misha Lambert!

Purchase tickets at [tbeboca.org/special-events](http://tbeboca.org/special-events) or call 561-391-8900.

Sponsorship opportunities available.

Contact Cantor Lori Shapiro at [ls Shapiro@tbeboca.org](mailto:ls Shapiro@tbeboca.org)

Reserved Benefactor Seats **\$100**

Preferred Admission **\$36** General Admission **\$18**



Schaefer Family Campus  
[tbeboca.org](http://tbeboca.org)

333 SW 4<sup>th</sup> Avenue | Boca Raton, FL 33432



# engaging the OTHER

## across the **DIVIDE**

### Civil Discourse Series

NEW

What is civil discourse? It is the ability to engage in thoughtful and respectful dialogue with someone who embraces different perspectives, opinions, and beliefs in order to not simply understand the other, but to better understand ourselves. It is foundational to living in a free, democratic society, as well as the basis for communal, civic, and political decision-making. It is the bedrock principle on which Judaism has grown for centuries.

Civil discourse involves listening, consideration, understanding, and respect—even in the midst of disagreement.

In this four-part series developed by Rabbi Levin and the Temple Beth El Civil Discourse Task Force, we'll learn what's Jewish and what's American about civil discourse, and how Temple Beth El can be a safe place for our community to share meaningful conversation about the issues of our day.

#### PART 1

##### **Introduction: How do you talk to people when you just don't agree?**

Wednesday, January 9, 2019

7:30 - 9:00pm

Led by Dr. Corky Becker - a Founding Associate of Essential Partners, a leading organization promoting Civil Discourse practice in America and throughout the world.

#### PART 2

##### **Immigration**

Tuesday, March 19, 2019

7:30 - 9:00pm

#### PART 3

##### **Gun Freedom and Safety**

Thursday, April 11, 2019

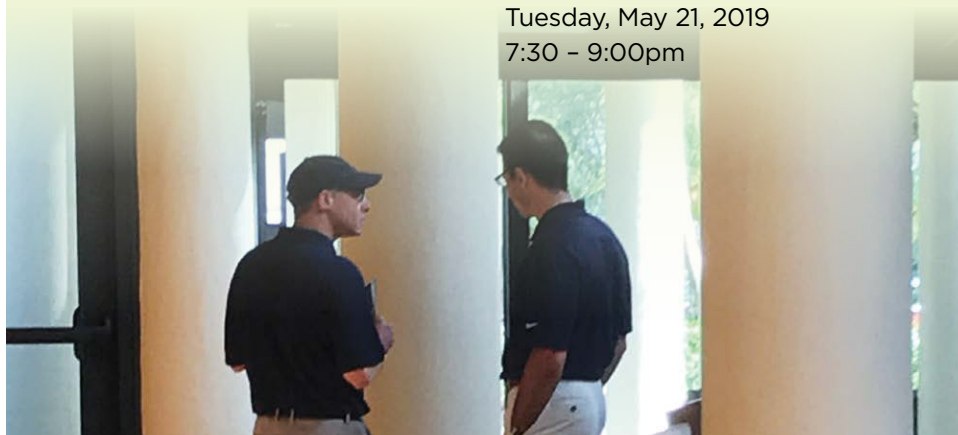
7:30 - 9:00pm

#### PART 4

##### **The U.S. Responsibility to Itself and the World**

Tuesday, May 21, 2019

7:30 - 9:00pm



For more information contact Rabbi Dan Levin at [dlevin@tbeoca.org](mailto:dlevin@tbeoca.org) or Suzanne Bring, Clergy Assistant at [sbring@tbeoca.org](mailto:sbring@tbeoca.org).

## across the **OCEAN**

### Peace of Mind

#### **ISRAELI SOLDIER SHABBAT DINNER**

Friday, January 11, 2019  
6:00pm

Kosher Shabbat dinner  
7:30pm Shabbat services  
\$36/per person,  
\$18/per child (4-10)

RSVP at

[tbeoca.org/special-events](http://tbeoca.org/special-events)  
by Tuesday, January 8, 2019

There are some guests that make their presence known. The house feels different, life is more interesting when they are in town and when they leave, they are sorely missed.

Temple Beth El is rolling out the welcome mat for some very special guests January 9-January 16, 2019. We will welcome a group of 20 Veteran Israeli Soldiers through a program called PEACE OF MIND (POM). There is a special Shabbat celebration to meet and get to know these soldiers. They will also have time to be alone together in therapy with the two therapists that travel with them from Israel. Why are these therapists with them?

The participants of this group are former combat soldiers from the Israel Defense Forces (IDF) Golani brigade who faced intense combat experiences during their military service.

POM intervention provides time and space for these young men to process their combat experiences in a supportive environment. The



veterans emerge from the program healthier emotionally and mentally, with most showing significant post-traumatic growth following their participation in the program.

An equally important element is the gratitude and warmth we give, which gives veterans a sense of love, support and added purpose in defending Israel. For our host families, this is an opportunity to get to know Israelis in an intimate and authentic setting, and to create personal relationships and memories that will impact us all.

An added layer is our collaboration on POM with Boca Raton Synagogue, an Orthodox synagogue that has a strong relationship with Temple Beth El. Rabbi Mates and Temple Board member, Ilyne Mendelson have worked with Rabbi Philip Moskowitz and Glen Golish from Boca Raton Synagogue, along with a devoted committee that has worked to provide programming for the soldiers, a beautiful therapy space, delicious meals and outstanding excursions that will give them a true taste of South Florida.

Our Friday night Shabbat service on January 11th will be a celebration of the POM soldiers time with us, and a beautiful way to come together as a community. **Am Yisrael Chai.**

—Rabbi Jessica Spitalnic Mates

## across the **STREET**

### Interfaith Weekend

**THE 32<sup>ND</sup> DORIS AND MERWIN GROSBERG Z”L\***  
**INTERFAITH WEEKEND WITH**  
**ST. JOAN OF ARC CATHOLIC CHURCH**

\*of blessed memory



**Shabbat Service**  
**followed by Italian Dinner**  
**Friday, March 1, 2019**  
**6:00pm Shabbat Service**  
**7:15pm Italian Dinner**  
**Temple Beth El**

**Schaefer Family Campus**  
Adults \$15 (after February 25, \$17)  
Children ages 4-10 \$10  
(after February 25, \$12)

**Sunday Mass**  
**Sunday, March 3, 2019**  
**12:15pm Sunday Mass**  
**St. Joan of Arc**  
**Catholic Church**

## Hunger

**HOW OUR FAITH TRADITIONS  
COMPEL US TO HELP THE NEEDY**



We welcome Msgr. Michael McGraw and our friends at St. Joan of Arc Catholic Church on Friday March 1 at 6:00pm, followed by a festive Italian dinner. We invite everyone from Temple Beth El to participate in Mass at St. Joan of Arc on March 3 at 12:15pm

Bring a donation of canned food to help solve the hunger problem in our community.

RSVP for dinner at [tbeboca.org/special-events](http://tbeboca.org/special-events) or to Debbie Eisenberg at [deisenberg@tbeboca.org](mailto:deisenberg@tbeboca.org)

# Back to School

## TWO MONTHS OF VISITING SCHOLARS FROM THE HEBREW UNION COLLEGE-JEWISH INSTITUTE OF RELIGION

HUC-JIR, the four-campus international institution of higher learning and seminary for Reform Judaism provides the academic and professional training programs for the Reform Movement's rabbis, cantors, educators, and nonprofit management professionals, and offers graduate programs for scholars of all faiths. HUC-JIR's 4,000 active alumni serve the Reform Movement's 1.5 million members and nearly 900 congregations, representing the largest Jewish denomination in

North America.

Temple Beth El's ties to the Hebrew Union College – Jewish Institute of Religion are strong. Patty Beck serves on the HUC-JIR Board of Governors and our rabbis, Cantor Shapiro and Director of Education Heather Erez are all alumni of the rabbinic, cantorial and education program. Who we are at Temple Beth El was shaped by the professors we had at the Hebrew Union College. Come meet them and learn with us in two outstanding weekend programs.

FEBRUARY 2019

### The Rabbi Aaron Panken z"l Memorial Lecture and Weekend

with Rabbi Andrea L. Weiss, PhD  
Sponsored by Patty and Louis Beck

Friday and Saturday,  
February 15 and 16

Rabbi Andrea Weiss is the Jack, Joseph and Morton Mandel Provost and Associate Professor of Bible at the Hebrew Union College-Jewish Institute of Religion. She is co-editor of "American Values, Religious Voices: 100 Days, 100 Letters" and associate editor of "The Torah: A Women's Commentary." She has written numerous articles on biblical poetry, metaphor, and other topics.



#### SHABBAT DINNER & TALK

##### HEALING DIVISION THROUGH DIALOGUE

*Lessons Learned from American Values and Religious Voices*

Friday, February 15, 2019 | 6:00pm

Schaefer Family Campus

Dinner \$20/per person

RSVP at [tbeboca.org/adult-programming](http://tbeboca.org/adult-programming)

Rabbi Weiss will reflect on the lessons learned from the 100 letters sent to our leaders in Washington during the first 100 days of the Trump administration. Recently published as a book, the letters offer wisdom, inspiration, and hope—a sorely needed antidote to the acrimony and discord that pervade politics today.

#### SHABBAT SERVICES & LECTURE

##### RAISING 100 VOICES

*The Creation of American Values and Religious Voices*

Friday, February 15, 2019 | 7:30pm

Presidents Day Weekend inspires Rabbi Weiss to recount how a nonpartisan, multi-faith letter writing campaign came about following the 2016 presidential election with the support of Rabbi Aaron Panken, z"l. Exemplifying the notion of "thought leadership" that was the hallmark of Rabbi Panken's presidency of HUC-JIR, the project enabled 100 scholars of religion across the country to do what the prophet Isaiah charges: "Raise your voice with power" (Isaiah 40:9) and contribute to the common good through a conversation about American values rooted in our diverse religious traditions. Rabbi Panken's letter was the 50th letter.



February's program will be dedicated to **Rabbi Aaron D. Panken, PhD, z"l** (of blessed memory) President of Hebrew Union College-Jewish Institute (HUC-JIR), who died tragically in a plane crash on May 5, 2018, at the age of 53.



*Rabbi Aaron Panken z"l was a distinguished rabbi and scholar, dedicated teacher, and exemplary leader of the Reform Movement for nearly three decades. As a product of the Reform Movement's camps, youth movement,*

*and seminary, his passionate commitment to Reform Judaism, to the State of Israel, and to the Jewish people worldwide inspired his efforts to ensure HUC-JIR's academic excellence in fulfilling its sacred mission*

## BREAKFAST & TEACHING

### "HOW LONG?" TURNING TO PSALMS IN TIMES OF CRISIS

**Saturday, February 16, 2019**

**9:00am Breakfast**

**9:30am Learning**

Since their inception long ago, people have turned to psalms for solace, support, and insight. We will study selected passages from the book of Psalms as we consider what makes these biblical texts so compelling and how they can speak to us in meaningful ways today.

**MARCH 2019**

## Scholar in Residence Weekend with Rabbi Dr. Michael Marmur



**Associate Professor of Jewish Theology  
at the Jerusalem Campus of Hebrew  
Union College-Jewish Institute of  
Religion**

### Shabbat Services & Lecture

**Friday, March 22, 2019**

**7:30pm**

**Rafts and Rhapsodies:**

**The Prospects for the Israel-Diaspora Relationship**

Using a metaphor taken from a Biblical verse, in this session we will look at the vexed question of the relationship between the State of Israel and Jewish communities around the world. Is this the end of the road, or the beginning of a beautiful friendship?

### Breakfast and Teaching

**Saturday, March 23**

**9:00am Breakfast**

**9:30am Reading the Weekly Portion With Heschel**

We will be introduced to one of the most influential thinkers and activists of the twentieth century, Abraham Joshua Heschel, and we will have an opportunity to look at some verses in the weekly portion through his eyes. Most particularly, we will read a short chapter entitled The Unity of the Torah, which includes verses from the section of Exodus being read this week.

### 10:30am Why Jews Quote

I have become interested in the phenomenon of Jewish quotation. How does it come to expression, and is it different from the ways everyone quotes?

*Dr. Michael Marmur is Associate Professor of Jewish Theology at the Jerusalem campus of Hebrew Union College-Jewish Institute of Religion. From 2009-2018, he served as the Jack, Joseph and Morton Mandel Provost at Hebrew Union College-Jewish Institute of Religion. Previously, he served as Vice President for Academic Affairs and Dean of Hebrew Union College - Jewish Institute of Religion in Jerusalem. In recent years he has taught courses in Theology, Homiletics, and Pluralistic Jewish Education. Born and raised in England, Rabbi Marmur completed a BA Degree in Modern History at the University of Oxford before moving to Israel in 1984. For some six years following his ordination he served as congregational rabbi, high school teacher and member of the executive board at the Leo Baeck Education Center in Haifa.*

### Jewish Meditation

**WITH AMY GROSSBLATT PESSAH**

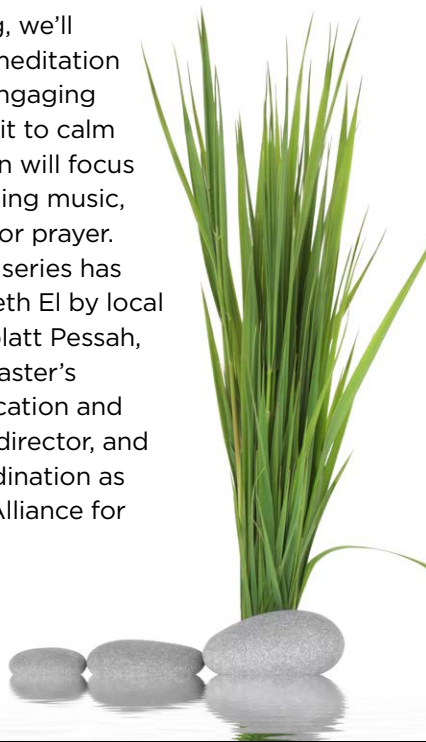
**January 23, March 13,**

**April 17**

**7:30pm**

**Schaefer Family Campus**

This winter and spring, we'll continue to practice meditation in a Jewish context, engaging body, breath, and spirit to calm the mind. Each session will focus on a distinct tactic, using music, chanting, movement, or prayer. This popular ongoing series has been led at Temple Beth El by local educator Amy Grossblatt Pessah, who has received a Master's degree in Jewish education and training as a spiritual director, and is now completing ordination as a rabbi with ALEPH: Alliance for Jewish Renewal.



### Russia on the Rocks

**DISTILLERY TOUR, RUSSIA TALK AND REGIONAL DINNER**

**Saturday, January 26, 2019**

**6:30pm departure from Beck Family Campus**

**10:30pm return to Beck Family Campus**

**\$75/per person, including round trip transportation**

**from the Beck Family Campus**

Join us for a unique experience learning about Russia and Russian relations with FAU Professors, David and Miriam Dalin. Meet up with visiting local Vodka distillers Summer and Nathan Piep at their West Palm Beach Lost Harbour Spirits, followed by dinner at local gem, The Regional Kitchen & Public House in CityPlace. A unique and special night not to be missed!

RSVP at [tbeboca.org/adult-programming](http://tbeboca.org/adult-programming).

Contact Aileen Spilka in the clergy office for questions or more information

[aspilka@tbeboca.org](mailto:aspilka@tbeboca.org) or 561-391-8900.



### River of Light



**EVENING OF MEDITATION, MUSIC AND CHANTING**

**With Israeli musician Netanel Goldberg and performer Nimrod Nal**

**Monday, February 25, 2019 | 7:30 pm**

**Schaefer Family Campus**



Netanel Goldberg is an Israeli vocal artist and musician who leads circles of prayer, meditation, and healing. Goldberg and his performance partner Nimrod Nal will visit Temple Beth El for a one-night-only, free, special event.

"River of Light" is an evening of chant and meditation, in which Goldberg and Nal will engage participants in using song to connect the individual's heart to the Divine. In Netanel Goldberg's own words, "Singing has a tremendous power to connect worlds, every song / prayer has a secret that seeks to be revealed. Let's create together a space through which we can empower, heal, and give healing."

No charge, but please RSVP at [tbeboca.org/special-events](http://tbeboca.org/special-events) or to Suzanne Bring in the clergy office at [sbring@tbeboca.org](http://sbring@tbeboca.org).



# Beck Family Campus Construction Update

BY **STEVE KAUFMAN**  
EXECUTIVE DIRECTOR  
skaufman@tbeboca.org



## FOUR NEW BUILDINGS

Construction at the Beck Family Campus is nearly complete. We are planning to open two new classroom buildings in January 2019. These new buildings, which contain a total of six classrooms, will be used for both Early Learning Center and Religious School students. The Beth El Early Learning Center is currently at full capacity with a waiting list, and the new rooms will allow us to welcome more families with young children into our community. The Religious School classrooms will be furnished with innovative and age appropriate furniture to create an engaging learning environment for teens and young adults, which is not something that exists presently at the Beck Family Campus.

In March 2019, we plan to open the two other new buildings at the Beck Family Campus which will house the teen/staff lounge and the new Kehillah (“Community”) Center. An additional playground is also under construction in the big back yard next to the basketball court.

We are planning a ribbon cutting event and celebration of the 10-Year Anniversary of the opening of the Beck Family Campus on Sunday, April 7, 2019. We hope you can join us.



We will **celebrate** the **completion** of **construction** with two major events at the Beck Family Campus in one weekend! Join us at the **Beth El Bash** on Saturday April 6, 2019, and for a **ribbon cutting** and family-friendly celebration on Sunday morning, April 7, 2019.

## WE COULDN'T HAVE DONE IT WITHOUT YOU

The Beck Family Campus expansion project would not have been possible without the dedication of two very special Beth El members – Robert Brand and Barry Podolsky. Robert Brand, a past Executive Vice President of the Temple's Board of Trustees, has an extensive construction background and has been instrumental in assisting us in our weekly construction meetings with Kaufman Lynn Construction, the General Contractor. Barry Podolsky, the Temple's Immediate Past President is the chairman of the construction committee for this project. Barry has donated hundreds of hours to this project and has been working tirelessly to ensure every detail is attended to. Barry has also been a critical leader in our fundraising efforts that have enabled us to convert our dreams to a reality at the Beck Family Campus. Barry, and his wife Susan, are the honorees for the 2019 Beth El Bash which will be held on Saturday April 6, 2019 at the Beck Family Campus.

Robert Brand and  
Barry Podolsky





## JUNE 2019 Temple Beth El Travel to Israel

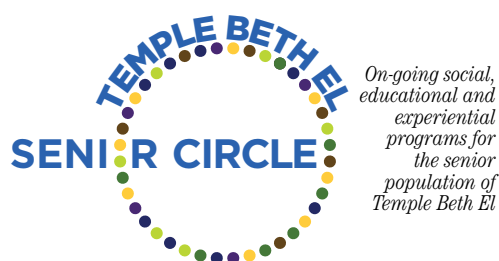
*"One does not  
travel to Jerusalem,  
one returns"*

Fall in love all over again as you travel around Israel this summer with Rabbi Dan Levin and other members of Temple Beth El. Explore, learn, pray, connect, kayak, climb, hike, tour, taste, sing, dance, shop, relax – all this and more during this two week trip of a lifetime. Registration is ongoing and space is limited.

June 3 -16, 2019

Eilat-Petra Extension June 16-19, 2019

For information, please contact Suzanne Bring in the clergy office at 561-391-8900 or [sbring@tbeboca.org](mailto:sbring@tbeboca.org).



## Meyer Lansky, Arnold Rothstein and Jewish Gangsters in America

**FAU PROFESSOR,  
DR. DAVID DALIN**

**Sunday, January 27, 2019 | 1:00pm  
Schaefer Family Campus  
No fee/No RSVP**

A favorite at Senior Circle, FAU professor Dr. David Dalin will discuss the fascinating saga of Jewish gangsters in America. Providing historical anecdotes and analysis, he will discuss the lives, crimes and Jewish identities of Meyer Lansky, Arnold Rothstein, and other famous (and infamous) American Jewish mobsters. In recounting the story of Meyer Lansky, the undisputed leader of organized crime in America, Dalin will discuss how Lansky established a gambler's paradise in Cuba, his devotion to Zionism and his much-publicized attempt to settle in Israel during the early 1970's. Dalin will also discuss the life of Arnold Rothstein, the son of a respected Orthodox Jewish businessman and philanthropist best known for allegedly "fixing" the 1919 World Series between the Chicago White Sox and the Cincinnati Reds, the infamous "Black Sox" scandal.

## Healing Division through Dialogue

**LESSONS LEARNED FROM AMERICAN  
VALUES, RELIGIOUS VOICES: SHABBAT  
DINNER & TALK  
RABBI ANDREA L. WEISS, PHD**

**Friday, February 15, 2019 | 6:00pm  
Schaefer Family Campus**

See page 10 for details. Dinner \$20/per person

RSVP at [tbeboca.org/senior-circle](http://tbeboca.org/senior-circle) or to Aileen Spilka at 561-391-8900 or [aspilka@tbeboca.org](mailto:aspilka@tbeboca.org)

## Weathering Life

**MY CAREER, MY FAMILY AND  
MY JOURNEY OF THE HEART**

**with Meteorologist and new  
Temple Beth El Member Frank Field  
Sunday, March 3, 2019 | 1:00pm  
Schaefer Family Campus  
No fee/No RSVP**



You may know him from his years on-air as the incredibly popular meteorologist on the local NBC and CBS stations in New York, his friendship with Johnny Carson, his brilliant science background or the life-saving work he did in making millions aware of fire safety and the Heimlich maneuver. His parents immigrated to America in 1909 and his extended family that remained in Europe perished during the Holocaust. Field returned on assignment from WCBS to search for remnants of his family and produced a one-hour special documentary, "Journey of the Heart," which included an emotional interview with Elie Wiesel. We will see the documentary and hear from Dr. Field about the impact the documentary had on him and on those who viewed it.

# Lunch & Learn



Bring your  
own lunch.  
Drinks  
provided.

## JANUARY

### TO BE CONTINUED: RABBI BEN HOLLANDER AND HIS TEACHINGS ON PARASHAT HASHAVUA

Rabbi Jessica Spitalnic Mates

Tuesdays, January 8 and 15, 2019 | 12:00-1:00pm

Schaefer Family Campus

Join Rabbi Mates in the study of the writings of Rabbi Ben Hollander of the HUC-JIR Jerusalem Campus, gathered together after his passing in 2008. **To Be Continued** is a compilation of his weekly Torah commentaries broadcast in Israel in the 1990's.

### GOVERNMENT AND GOVERNING IN ISRAEL AND AMERICA

Professors Drs. David and Miriam Dalin

Tuesdays, January 22 and 29, 2019 | 12:00-1:00pm

Schaefer Family Campus

Two eminent scholars in our community will reflect on the intersection of politics, society and history in the United States and the Holy Land, and the role of Judaism in both places. Dr. David Dalin, Senior Research Fellow at Brandeis University, is an ordained rabbi and widely published scholar of American Jewish history. Dr. Miriam Sanua-Dalin specializes in Jewish history with an emphasis on the United States. She also teaches courses on the history of the modern state of Israel, and the history and culture of the Sephardic Jews.

## FEBRUARY

### LILITH — THE REAL FIRST LADY

Rabbi Greg Weisman

Tuesdays, February 5, 12, 19 and 26, 2019

12:00-1:00pm

Schaefer Family Campus

Three's Company with Adam, Eve, and the real first lady, Lilith. This mythical character has appeared throughout the Jewish tradition, causing fear and confusion, and has resurfaced in modern times as a symbol of feminism. Rabbi Greg Weisman will lead an exploration of her literary and religious episodes, using the original source texts.

## SACRED AGING

### There's No Place Like Home?

Sunday, January 20, 2019

10:00am

Schaefer Family Campus

As we age, our housing needs may change. But deciding between the various options- independent living, assisted living, memory care, hospice care or staying at home with home health care- can be daunting. Each has its own upsides and challenges, and they can be challenging to compare.

At this event, a respected representative from an independent living, assisted living, and memory care facility, along with someone from JFS at Home, the home health care agency run by our local Jewish community, will be there to describe each living situation and answer questions.

Whether you are preparing to make this decision for yourself or for a loved one, this discussion will be most helpful. A light breakfast will be served.

Thank you to the Temple Beth El Brotherhood, Sisterhood/WRJ, and Beth El Mausoleum for their sponsorship of this event.

For questions or more information, go to [tbeoca.org/special-events](http://tbeoca.org/special-events) or contact Rabbi Greg Weisman at [gweisman@tbeoca.org](mailto:gweisman@tbeoca.org)



# Shabbat

## **JANUARY 4** *EARLY SERVICE*

### **6:00pm Shabbat at Six!**

#### **Schaefer Family Campus**

Our one-hour casual "service for the soul!" Refresh and renew with us through music and prayer.

## **JANUARY 11**

### **6:30pm Tot Shabbat Shira**

Bring on the music at the Beck Family Campus. A fabulous, musical service led by our teen musicians and youth choir, Shir Joy! Your children will be inspired by the musical talent of the many young people who surround us at Temple Beth El. Pizza dinner at 6:00pm before service. No charge for dinner but please RSVP at [tbeboca.org/early-learning-center](http://tbeboca.org/early-learning-center).

### **7:30pm Shabbat Service: Peace Of Mind**

#### **Schaefer Family Campus**

On this Shabbat we celebrate the valor and sacrifice of the soldiers of the IDF with our special guests from Peace of Mind. Join us for Shabbat dinner with the Israeli soldiers. See page 8 for details.

RSVP at [tbeboca.org/special-events](http://tbeboca.org/special-events).

## **JANUARY 18**

### **7:30pm Shabbat Shira: Gospel Shabbat!**

#### **Schaefer Family Campus**

Martin Luther King said, "I have a dream..." and on this Shabbat we share that dream of freedom and equality. Professional Gospel Group, JSHARP will join our

cantorial team to raise the roof in worship and song!

## **JANUARY 25**

### **7:30pm Shabbat led by our 3rd Graders!**

#### **Schaefer Family Campus**

Celebrate a musical and meaningful Shabbat service led by our 3rd graders!

### **7:30pm Kaballat Shabbat: The Ten Commandments**

#### **Schaefer Family Campus, Atrium**

An intimate, reflective worship celebration of Shabbat where we will delve into our Torah portion, Yitro, and explore different interpretations of the Ten Commandments.

## **FEBRUARY 1** *EARLY SERVICE*

### **6:00pm**

#### **Shabbat at Six**

#### **Schaefer Family Campus**

Our amazing 2nd grade class will open this lively, festive service filled with song and celebration.

### **5:45pm Shabbat Club**

#### **Schaefer Family Campus**

Drop off your children (ages 3-10) for a wonderful Shabbat experience while you enjoy our 6:00pm service in our sanctuary. Pizza and the Shabbat Club are offered free of charge when you register online at

[tbeboca.org/worship](http://tbeboca.org/worship).

## **FEBRUARY 8**

### **7:30pm Sisterhood Shabbat**

#### **Schaefer Family Campus**



**6:00PM EARLY FRIDAY EVENING SERVICE  
is on the FIRST Friday of every month!**

Our Women of Reform Judaism will lead us in worship and song in this lively celebration of Shabbat.

**FEBRUARY 9**

**4:00pm-5:45pm HAVDALAH IN THE GARDEN**  
**Delray Beach Children's Garden 137 SW 2nd Avenue,  
Delray Beach**  
**\$25.00/Family**

Indulge your child's need for a hands-on experience in a lush, natural environment while you have the opportunity to get together with friends in a magical setting. Price includes a garden tour, besamim (spice pouch) making, light hors d'oeuvres for adults and children, Havdalah service, and a donation to the garden. Space is limited. RSVP at [tbeboca.org/early-learning-center](http://tbeboca.org/early-learning-center).

**FEBRUARY 15**

**7:30pm Shabbat Service: Raising 100 Voices: The Creation of American Values, Religious Voices**

Guest speaker, Rabbi Andrea L. Weiss, PHD will recount how a nonpartisan, multi-faith letter campaign came about following the 2016 presidential election with the support of Rabbi Aaron Panken, z"l. See page 10 for details. The Rabbi Aaron Panken z"l Memorial Lecture and Weekend with Rabbi Andrea L. Weiss, PhD is generously sponsored by Patty and Louis Beck.

**7:00pm Family Participation Service:  
The Leader in ME!**

**Beck Family Campus**

The traits of great leadership begin with our youth! This service, led by members of Shir Joy and other musical members of our TBE community, will inspire and teach us about the qualities that define great leadership. Enjoy a pizza dinner at 6:30pm, followed by a casual family service, an activity and oneg. No charge for dinner, but please RSVP at [tbeboca.org/worship](http://tbeboca.org/worship).

We invite our family, friends and community to worship with us at this very special time in our lives when the

Temple Beth El Adult B'nai Mitzvah  
Class of 2019/5779

is called to the Torah on  
Saturday, January 12, 2019 / 6 Shevat 5779  
10:45 am

Temple Beth El  
333 Southwest 4th Avenue  
Boca Raton, FL 33432

Staci Aron  
Orin Kirshner  
Sue Lichtenstein  
Alexandra Paroulek-Bergbauer

RSVP by January 7, 2019 to Aileen Spilka  
at [aspilka@tbeboca.org](mailto:aspilka@tbeboca.org) or 561-314-2656.



**FEBRUARY 22**

**7:30pm Shabbat led by our 5th Graders!**

**Schaefer Family Campus**

Celebrate a musical and meaningful Shabbat service led by our 5th graders!

**7:30pm Kaballat Shabbat: The Seen and Unseen God**  
**Shaefer Family Campus Atrium**

Explore this weeks parsha Ki Tisa.



## Cantor's Corner

### GOSPEL SHABBAT!



This year Shabbat Shira, our Sabbath of Song, coincides with MLK Weekend. So what better time to celebrate Gospel Shabbat! On Shabbat Shira, we read Shirat HaYam, The Song of the Sea – the poem in the Torah which graphically tells the treacherous story of the Hebrews crossing the Red Sea to freedom. Our story is one of struggle – and Moses was not so different than Dr. Martin Luther King Jr. Both were great leaders who lead their people to freedom and overcame adversity in the quest for civil rights.

Joining us will be the group, JSharp – a group of soulful gospel singers who will infuse their musical style into our Jewish text and raise the roof in song and prayer. Together we will embrace both our differences and our commitment to finding holiness in our world. Join us on Friday evening, January 18<sup>th</sup> at 7:30 pm for an evening of soulful worship and song!

—Cantor Lori Shapiro

# SHABBAT SHIRAH GOES

# Gospel



JSharp

**Friday, January 18, 2019**

**7:30 pm**

**Schaefer Family Campus**

**Martin Luther King said, “I have a dream...” and on this Sabbath of Song, we share that dream of freedom and equality. Our cantorial team will infuse our Jewish text with the sound of gospel. The professional gospel group, JSharp, will join our cantorial team to raise the roof in music and prayer as we celebrate the Song of the Sea – our crossing to freedom!**



# Family Havdalah Mystery Night

## DINNER, HAVDALAH AND "THE CASE OF THE MISSING SPICE BOX"

Saturday, January 12, 2019

5:00pm - 7:00pm

Beck Family Campus

\$12/Adult

\$8/Child ages 4-10

Prices increase to

\$15/Adult

\$10/Child ages 4-10 after

Monday, January 7, 2019.

It's a fun-filled, family

evening! Join

us for dinner

at 5:00 pm

featuring a taco

bar full of tasty

Southwestern

flavors, then

help solve

The Case of

the Missing

Spice Box!

Families will

work together

to master this

mystery, then

enjoy delicious

dessert and

a beautiful

Havdalah

service. This event is geared

towards families with

children in elementary school

and their siblings. It has been

generously underwritten by

Brotherhood and Sisterhood.

Space is limited and RSVPs

are required at

[tbeboca.org/school-event-](http://tbeboca.org/school-event-calendar)

[calendar](http://tbeboca.org/school-event-calendar) or contact Rachael

Rand at [rRAND@tbeboca.](mailto:rRAND@tbeboca.org)

[org](http://tbeboca.org) or 561-391-9091 for more

information.



# Night of 50 Shabbat Dinners

Friday, March 8, 2019 | 6:00pm

Gather with your Temple Beth El

family and friends for Shabbat dinner!

Let's have 50 celebrations all over town.



## SIGN UP NOW! HERE'S HOW:

**BE A HOST:** Let the Temple know how many guests you can accommodate and we'll place guests with you, or invite your own guests, or both! Hosts receive a special 'thank you' gift from the Temple.

**BE A GUEST:** Let us know if you have a particular home you'd like to attend, or a person you'd like to attend with. Whether you have a specific request or not, we will be sure to find you a wonderful place to spend Shabbat.

**SHABBAT BLESSINGS:** Hosts will decide if their household will enjoy Shabbat blessings led by our clergy on a live conference call at 6:30 pm, or by watching our specially recorded video at any time they choose. Then everyone will spend the rest of the evening enjoying Shabbat among old friends and new, brought together as part of our Temple Beth El family.

**DINNERS:** Dinners are not limited to homes - get together at restaurants, at a park, at a clubhouse, or wherever works best for you. You can cook, make it potluck, or order in.

There's NO FEE to participate in this event, all event related costs have been generously underwritten by Brotherhood.

Register to be a HOST or GUEST at [tbeboca.org/special-events](http://tbeboca.org/special-events) or contact Rachael Rand at 561- 391-9091, [rRAND@tbeboca.org](mailto:rRAND@tbeboca.org).

**Deadline: Monday, February 25, 2019.**



*There will be a brief Shabbat evening service at 5:30pm at Temple Beth El Schaefer Family Campus for those who wish to attend or are observing Yahrzeit and saying Mourner's Kaddish.*



## SOCIAL ACTION

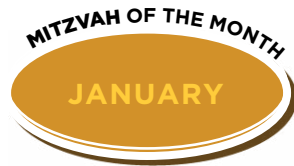
### Steps for Life 5k Run/ Walk

**Sunday, January 13, 2019**

**7:30am Registration**

**8:30am - 12:00pm 5k Run/  
Walk**

**Sunset Cove Amphitheater  
at South County Regional Park**



Join Temple Beth El in supporting Gift of Life Bone Marrow Foundation at the 2019 Steps for Life 5k Run/Walk in Boca Raton. Led by team leader Debi Jackman, we are raising funds and awareness for bone marrow and blood stem cell transplants.

Go to [tbeboca.org/social-action](http://tbeboca.org/social-action) for more information,

to register  
to walk, or  
to make a  
donation.



### City of Boca Raton Martin Luther King Jr. Day Celebration

**Monday, January 21, 2019**

**9:30 - 11:00am**

**MLK Jr. Memorial, 200 NE Ruby Street**

**11:00 - 4:00pm**

**Sanborn Square, 72 North Federal Highway**

Join Temple Beth El, the Boca Raton Interfaith Clergy Association, and the City of Boca Raton for a ceremony and celebration honoring the life and legacy of Martin Luther King Jr., featuring city officials, inspirational speeches and musical performances by the Boca Raton Community High School Band and local groups.

Then, we will march from MLK Jr. Memorial to Sanborn Square for a celebration with music, family activities, face painting, rides, slides, and vendors.

For more information, contact Rabbi Greg Weisman at [gweisman@tbeboca.org](mailto:gweisman@tbeboca.org).



### Habitat for Humanity Build

**Saturday, February 23, 2019**

**8:00am-12:00pm**

Help build a house for an at-risk family who can benefit from the life-changing opportunity of homeownership. Minimum age is 16 years old to participate. Absolutely

no experience is required! The build

will take place  
in south Palm  
Beach County,  
and more

information will be  
available closer to the build date.

Register at [tbeboca.org/social-action](http://tbeboca.org/social-action).

For more information, contact Rabbi  
Greg Weisman at 561-391-8900 or

[gweisman@tbeboca.org](mailto:gweisman@tbeboca.org)



## RELIGIOUS ACTION CENTER OF REFORM JUDAISM

# Consultation on Conscience

May 19-21, 2019

Washington, DC

The Consultation on Conscience is the Religious Action Center's biennial gathering in Washington, DC. There, Reform Jews from across North America will gather with social justice leaders to deepen connections within congregations and across the Reform Movement, network with other communities facing similar social

justice challenges and opportunities, build tangible organizing and advocacy skills, and make their mark on the federal, state and local landscape.

A delegation of members from Temple Beth El, led by Rabbi Greg Weisman, have already signed up, and we welcome all to join us! As a Temple Delegation, we have access to discounted registration fees, special programming and coaching, and pre- and post-conference opportunities.

If you are interested in joining us, contact Rabbi Greg Weisman at [gweisman@tbeoca.org](mailto:gweisman@tbeoca.org) for more information and for our Delegation discount code.



Join our Delegation at the  
**Consultation on  
CONSCIENCE**

MAY 19-21, 2019 • WASHINGTON, DC

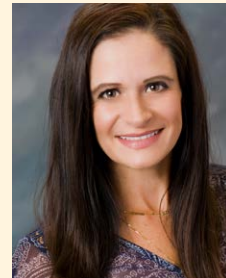
*Learn. Act. Repair the World.*

## GUARDIAN AD LITEM INFORMATIONAL MEETING

Tuesday, January 15,  
2019

7:00pm

Home of Gina Shugar  
Guardian Ad Litem



Have you ever considered volunteering as a Guardian ad Litem? This is an incredible opportunity to give back to the community by helping stand up for neglected, abandoned, or abused children by being their advocate in the courts system. Guardians go through a training process.

Temple Beth El is seeking members who would do their training together and create a cohort of Guardians ad Litem to share and support one another in this important work. To start this process, there will be an information meeting at the home of Gina Shugar, who currently serves as a guardian ad litem, with two representatives of the Palm Beach County Guardian ad Litem program. Address will be provided to those who register at [tbeoca.org/social-action](http://tbeoca.org/social-action).

For more information, contact Rabbi Greg Weisman at [gweisman@tbeoca.org](mailto:gweisman@tbeoca.org).



# Students Understand the “Other”

BY **HEATHER EREZ**

DIRECTOR OF YOUTH EDUCATION AND ENGAGEMENT  
herez@tbeboca.org



**AMANDA CHARSON**

Assistant Director of  
Youth Education and  
Engagement  
(grades K-6)  
acharson@tbeboca.org



**MELISSA ABELL**

Assistant Director of  
Youth Education and  
Engagement  
(grades 7-12)  
mabell@tbeboca.org

In the elementary grades, the religious school focuses on identity; who we are as Reform Jews and where we fit in overall in the community. Students start to form the concept of “us and them” at a young age. Noticing and celebrating our similarities and differences to non-Jewish peers is essentially accepted among this age.

As students get older, their focus on “the other” takes on more of an academic approach in addition to the social interactions. Tapping into this interest, our 9<sup>th</sup> graders spend the year learning and visiting other houses of worship in our Comparative Religions class. Students had a conversation with a local Imam at the mosque, attended services at a Methodist church and took a tour of St. Gregory’s. Engaging the “other” brings our students into conversations where they are able to understand the differences in our religions

Students had a conversation with a local **Imam** at the mosque, attended services at a **Methodist church** and took a tour of St. Gregory’s. **Engaging the “other”** ...helps students understand.

while finding the many similarities as well.

As juniors and seniors in high school, our students delve into the various denominations of Judaism to find common threads within current issues. After choosing from a curated list of topics, they use Jewish texts to examine the values and the ways in which they, the students, form their own points of view. Sometimes, even within Judaism, we find ourselves engaging with the “other”.

Our high school uses a Jewish lens to create experiences and interactions with “others” providing students with skills they will use for the rest of their lives.



Noam Erez



Leah Hoffman

## B’nai Mitzvah

Noam Erez  
Son of Heather and  
Shachar Erez  
1/5/2019 11:30AM

Sidnie Passeroff  
Daughter of Kelly and  
Michael Passeroff  
2/16/2019 11:30AM

Leah Hoffman  
Daughter of Karyn  
and Glen Hoffman  
1/19/2019 10:45AM

Harley and Marina  
Fowler  
Daughters of Karen  
Smith  
2/16/2019 6:00 PM

Marlee Barrio  
Daughter of Debra  
and Alfred Barrio  
1/26/2019 9:00 AM

Evan Lansburgh  
Son of Laura and  
Justin Lansburgh  
2/23/2019 10:45AM

Lindsey Heller  
Daughter of Allison  
and Bill Heller  
1/26/2019 11:30AM

Emily Singer  
Daughter of Anna  
and Michael Singer  
2/23/2019 5:00PM



Marlee Barrio



Lindsey Heller



Lylah Beck



Sidnie Passeroff



Harley Fowler



Marina Fowler



Evan Lansburgh



Emily Singer



# Religious School Important Dates

## **NO RELIGIOUS SCHOOL OR HEBREW SCHOOL**

**Sunday, December 23 - Monday, January 7, 2019**

Have a wonderful Winter Break

## **THE BIG LUNCH 2019**

**Thursday, January 3, 2019**

**12:00-1:30pm**

**Schaefer Family Campus**

Rabbis Dan, Jessica, and Greg can't wait to catch up with your college kids at our annual College Homecoming Lunch. No charge.

## **PIZZA BY THE SLICE FUNDRAISER FOR CAMP JENNY**

**Sunday, January 13, 2019**

**11:30am - 12:30pm**

**Beck Family Campus**

Our BOFTY teens will be selling pizza during Religious School dismissal at the Beck Family Campus to raise money to send children-in-need to Camp Jenny this summer.

Cost: \$3.00 per slice or \$5.00 for two. Avoid the line and pre-order your pizza now at [tbeboca.org/school-event-calendar](http://tbeboca.org/school-event-calendar)

## **3RD GRADE SHABBAT**

**Friday, January 25, 2019**

**Dinner at 6:30pm**

**\$10/adult \$5/child**

**Rehearsal at 6:50pm**

**Services at 7:30pm**

Come and see your 3rd grader shine as they help lead Shabbat services. Start with a group Shabbat dinner.

## **3RD GRADE**

**FAMILY EDUCATION DAY**

**Creating Your Utopia**

**Sunday, January 27, 2019**

**10:00-11:30am**

**Schaefer Family Campus**

## **2ND GRADE SHABBAT**

**Friday, February 1, 2019**

**Family Pizza Nosh 5:00pm**

**No charge but you must RSVP**

**Rehearsal at 5:30pm**

**Services at 6:00pm**

**Register online for nosh.**



## **11TH & 12TH GRADE RETREAT IN NYC**

**The Jewish American Story**

**Thursday, February 7 - Sunday, February 10, 2019**

## **KINDERGARTEN FAMILY EDUCATION DAY**

**SUNDAY, FEBRUARY 24, 2019**

**Finding Sacred Moments**

**10:00-11:30am**

**Schaefer Family Campus**

## **5TH GRADE SHABBAT**

**Friday, February 22, 2019**

**Rehearsal at 6:50pm**

**Services at 7:30pm**

Come and see your 5th grader shine as they help lead Shabbat services.

**Register for all events at**  
**[tbeboca.org/school-event-calendar](http://tbeboca.org/school-event-calendar)**

# Youth Engagement

## **TRIBES NAPHTALI (3RD GRADE), GAD (4TH GRADE), AND ASHER (5TH GRADE) HAVDALAH HANGOUT**

**Saturday, January 12, 2019**

**6:30-9:00pm**

**Beck Family Campus**

Join us for Family Havdalah (see page 19) and stay late for a movie under the stars. Free for 3rd/4th/5th graders that register to attend Family Havdalah Mystery Night, \$10 for 3rd/4th/5th grader that do not attend Family Havdalah Mystery Night. Bring your blankets and pull up the best seat on the lawn.



## **TRIBES JUDAH (1ST GRADE) AND DAN (2ND GRADE) TU B'SHEVAT IN THE TREES**

**Sunday January 27, 2019**

**12:00-2:30pm**

**Beck Family Campus**

Celebrate Tu B'Shevat in our own backyard! Lunch, games, and a special Tu B'Shevat project. Free to attend, online registration required. Transportation provided from the Schaefer Family Campus and back.

## **KINDERGARTEN SUPER BOWL SUNDAY**

**Sunday February 3, 2019**

**12:00-2:00pm**

**Beck Family Campus**

Pre-game party including voting for your favorite team, sports, games and more! Lunch and dessert will be served. Free to attend, online registration required.

## **TRIBES NAPHTALI (3RD GRADE), GAD (4TH GRADE), AND ASHER (5TH GRADE) BOP INTO BOOMERS**

**Sunday, February 10, 2019**

**Boomers Boca Raton**

Enjoy an afternoon with your friends go kart racing, bumper boating, miniature golfing, laser tagging, and rock wall climbing! \$25 per student includes lunch and transportation.

## **NFTY CONVENTION 2019**

**Friday, February 15 - Monday, February 18, 2019**

**Gaylord Texan Resort, Dallas, TX**

## **BOFTY & JR. BOFTY MIAMI HEAT VS. DETROIT PISTONS**

**Saturday, February 23, 2019**

**5:00pm Departure from the Beck Family Campus**

**Arrival back to the Beck Family Campus by 11:00 pm**

**\$55, includes game ticket, meal voucher, and transportation**

Registration Deadline Wednesday, February 20, 2018.

# Teaching Young Children About Diversity

BY **CINDY KORSHIN**

BETH EL EARLY LEARNING CENTER CO-DIRECTOR  
ckorshin@tbeoca.org



**RONNI GRAF**  
BETH EL EARLY  
LEARNING CENTER  
CO-DIRECTOR  
rgraf@tbeoca.org

We are all different, we are all the same.  
How do we teach young children about what makes us unique while embracing the qualities that we all have in common? What is the difference between how we look, or how many people are in each of our families?

Children as young as 2 years old notice the difference between genders. At 2 ½ children recognize colors which they begin to apply to objects and skin color, and at approximately age 4-5 children begin to display gender appropriate behavior.

What does all of this mean?

Ultimately, children learn by what they see and hear so if we want children to learn to

While we may all be **different**  
on the **outside** we are all  
**alike** on the **inside**.

accept differences between one another here are a few suggestions:

Give your child concrete experiences

Model the behaviors you want your children to develop



Children want to know why people are different however, their questions are not based on bias or prejudice so answer their questions factually.

Here are some simple books you can also share with your child:

- *Whoever You Are* by Mem Fox
- *Elmer* by David McKee
- *It's OK to be Different* by Todd Parr

We want to teach children to be proud of who they are, their accomplishments and growth; and we also want them to recognize that while we may all be different on the outside we are all alike on the inside.

## IMPORTANT DATES JANUARY/FEBRUARY 2019

Tuesday, January 1	NO SCHOOL
Wednesday-Friday, January 2-4	NO SCHOOL - Winter Camp in session
Monday, January 7	School resumes
Wednesday, January 9	Wear Your Pajamas to School Day
Friday, January 11	Tot Shabbat Shira
Wednesday, January 16	Parenthood Meeting 7:00pm
Monday, January 21	NO SCHOOL - Martin Luther King Jr Day
Saturday, January 26	Family Fun Day & Open House 10:00am
Friday, February 1	Grandparents Shabbat (3's)
Friday, February 8	Grandparents Shabbat (2's/4's)
Saturday, February 9	Havdalah in the Garden 4:00pm - 5:45pm (OOT)
Wednesday, February 13	Parenthood Meeting 9:15am
Friday, February 15	NO SCHOOL - Staff Development Day
Monday, February 18	NO SCHOOL - Presidents Day
Friday, February 22	Parent Workshop at 9:15am
Wednesday, February 27	Bike Day



# Tot Shabbat Shira

Friday, January 11, 2019

6:00pm Pizza dinner

6:30pm Service

Beck Family Campus



Bring on the music at the Beck Family Campus. Enjoy a fabulous, musical service led by our teen musicians and youth choir, Shir Joy! Your children will be inspired by the musical talent of the many young people who surround us at Temple Beth El. Pizza dinner at 6:00pm before service. No charge for dinner but please RSVP at [tbeboca.org/early-learning-center](http://tbeboca.org/early-learning-center).

## PARENT WORKSHOP:

### Blessings of a Skinned Knee

Friday, February 22, 2019 | 9:15 am

Beck Family Campus (Breakfast will be provided)

How do you raise a resilient child who will grow up knowing how to adapt to challenges? How should parents handle their children's emotional and/or physical discomfort? Join Rabbi Dan Levin and our Education Director, Heather Erez, in a conversation that allows us to see these difficult parenting moments as blessings.

There is no cost, but RSVPs are required.

Open to adult Temple Beth El members who have children ages 5 and under. We thank Parenthood and Sisterhood for their support.

No fee but please RSVP at [tbeboca.org/early-learning-center](http://tbeboca.org/early-learning-center) by Wednesday, February 20, 2019. For more information, please contact Rachael Rand at [rrand@tbeboca.org](mailto:rrand@tbeboca.org) or 561-391-9091.



# Havdalah In The Garden

Saturday, February 9, 2019

4:00pm-5:45pm

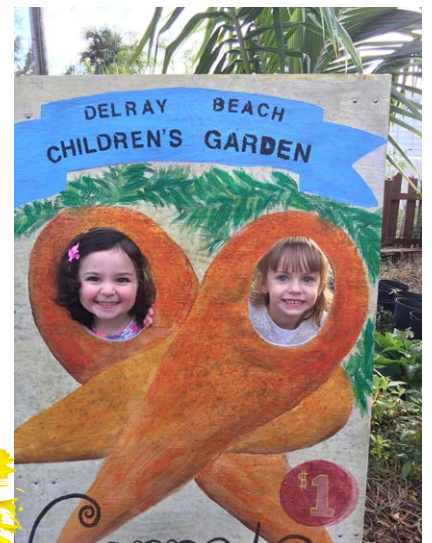
Delray Beach Children's Garden

137 SW 2nd Avenue,

Delray Beach

\$25.00/Family

Indulge your child's need for a hands-on experience in a lush, natural environment while you have the opportunity to get together with friends in a magical setting. Price includes a garden tour, besamim (spice pouch) making, light hors d'oeuvres for adults and children, Havdalah service, and a donation to the garden. Space is limited. RSVP at [tbeboca.org/early-learning-center](http://tbeboca.org/early-learning-center).





# Our Town

## FAMILY FUN DAY & OPEN HOUSE

Saturday, January 26, 2019

10am to 1:30pm

Beth El Early Learning Center  
9800 Yamato Road, Boca Raton

Free



### EXPERIENCE "OUR TOWN" FULL OF FRIENDLY FACES AND LOTS OF ACTIVITY!

Doors open at 10:00am. Enjoy Tot Shabbat at 10:15am, followed by a yummy Oneg and our full program of activities starting at 10:45am.

Please register to attend at [tbeboca.org/early-learning-center](http://tbeboca.org/early-learning-center)

- Meet our wonderful teachers
- Play soccer in Our Town Gym
- Wild Animal Experience
- Carnival Games
- Arts & Crafts
- Petting Zoo
- Meet Palm Beach County Fire and Rescue and tour a real fire truck
- Dine in our "food court" with a delicious lunch
- Bounce houses, glitter art and more

## AROUND BETH EL • CHANUKAH UNDER THE STARS

**We celebrated the joyous holiday of Chanukah at "Chanukah under the Stars" at Mizner Park Amphitheater on December 7, 2018. It was a beautiful, festive and fun evening under the night sky!**

### THANK YOU TO OUR SPONSORS FOR HELPING TO MAKE THIS EVENING POSSIBLE

**PRESENTING SPONSOR**  
Kaufman Lynn Construction

#### CANDLE SPONSORS

Anonymous

Allison and Bill Heller  
in honor of Lindsey's Bat Mitzvah

Michelle and Trevor Keyes  
in honor of Danielle and Lindsey's  
B'not Mitzvah

Christy McElhaney  
and Mark Sunshine

Margie Plough and  
Maurice Plough, Jr.

Philip Pollak

#### BUSINESS SPONSORS AND COMMUNITY PARTNERS

Jewish Federation  
of South Palm Beach County  
South Florida Orthodontics

Tassel Depot

Kronish Funeral Services

Temple Beth El Sisterhood  
and Brotherhood

Shiva Deliva

The Law Offices of Weiss,  
Handler & Cornwell, P.A.,

Zeuner Realty, Shari Schwamm

Carlos Aristizabal Photo and Video

PR Guru

Simply the Best Magazine





## SISTERHOOD UPDATE



BY AIMEE LEVIN  
AND JILL WEINER  
SISTERHOOD CO-PRESIDENTS  
[sisterhood@tbeboca.org](mailto:sisterhood@tbeboca.org)  
[www.tbeboca.org/sisterhood](http://www.tbeboca.org/sisterhood)

### Did You Know...????

Temple Beth El Sisterhood hand-delivers, to each Religious School student, a Chanukah goody bag, complete with a dreidel, a box of candles and a bag of gelt, as well as sufganiyah (donuts)!

Greetings from Sisterhood and Happy 2019!

We hope that all of you enjoyed a Happy Chanukah and New Year.

One thing about Sisterhood at Temple Beth El: we are engaged in all sorts of ways...

### Mah-Jongg

Mah-jongg has found its home in the hearts of Jewish women, and definitely here at Temple Beth El Sisterhood, too.

Mah-jongg began as a game that only Chinese men played centuries ago. However, according to an article published in the L.A. Times, American Jewish women have embraced mah-jongg since the 1920s, partly because of the closeness of Jewish communities. "Jewish communities stayed together for a long time, a lot of Jewish women vacationed together in places like Florida and the Catskills, and mah-jongg was a perfect way to spend the time."

One of our most popular events has become Mah-jongg Madness, which will be held at Temple Beth El's Schaefer campus on Thursday, January 10th. If you're a seasoned player, or just a beginner, please join us. It's a great way to engage with other women and promises to be an evening of fun and a little competition!

### Art

On Friday, January 25th, join Sisterhood on a bus and a boat for an engaging "Art Fair on the Water" day trip, chaired by Andrea Corn.

The 3rd Annual Art Fort Lauderdale "Art Fair on the Water" is a gorgeous day that combines a water taxi, real estate tour and works of some of the most talented artists alive today!

This cutting edge art event is one of the most unique and beautiful experiences you can have in South Florida. Our trip will include greetings from Art Fort Lauderdale creator Evan Snow and several artists. SPACE IS LIMITED.

### Shabbat

There's no better way to be engaged than to attend a Shabbat service. On Friday, February 8th, please join us for Sisterhood Shabbat. Come to the service, or even better, please let us know if you would like to have a part in the service. We look forward to celebrating the Sisterhood at this inspiring, Sisterhood-led service.



## upcoming events

Please look for Sisterhood and Temple Beth El weekly emails for details and registration info, or online at [tbeboca.org/sisterhood](http://tbeboca.org/sisterhood).

### Mah-jongg Madness

Thursday, January 10, 2019 | 6:00pm  
Schaefer Family Campus

### Fort Lauderdale Art Fair on the Water

Friday, January 25, 2019 | 10:00am

### Sisterhood Shabbat

Friday, February 8, 2019 | 7:30pm  
Schaefer Family Campus

### Lilith Salon

Monday, March 11, 2019

### Women's Passover Experience — Not Your Mother's Seder!

led by composer/performer  
Beth Schaefer  
Tuesday, April 23, 2019  
Schaefer Family Campus



## BROTHERHOOD UPDATE



BY **CARLOS ROMERO**  
BROTHERHOOD PRESIDENT  
info@tbebrotherhood.org  
www.tbeboca.org/brotherhood

Welcome to 2019! It is amazing how quickly the year is going by. Your Brotherhood has been busy. We had an awesome Brotherhood mixer to watch the Dolphins back in October at the Yard House. There were many new connections made which is one of the best things about Brotherhood. You never know who you are going to meet. I met a new resident of Boca Raton who is also a new member of Temple Beth El. His name is Jon. As we got to talking, we realized we had a friend in common and we laughed about our mutual friend Mitch.

But it became really crazy when Jon sent me a text message while he was having breakfast with a friend (named Evan) in NYC

a few weeks later. Jon mentioned my name as one of his new friend's in Boca Raton and that we met through the Brotherhood at Temple. There aren't many people with my name at a Synagogue and it turns out that I was Evan's camp counselor back in 1986. Evan also

sent me a picture of our bunk from back then! 1986 was an amazing summer for me because it was there that I met my wife Melissa. Jon reconnected me with my former camper Evan whose daughter is now looking at attending the University of Miami this fall. Talk about Jewish geography. All through our Temple's Brotherhood.

We have some great upcoming events that we would like to invite you to be a part of. We will be having a special evening with David Samson, former President of the Miami Marlins, on Thursday, January 31st where food and drinks will be served. We also have lined up a "Roadtrip" down to the new TopGolf location in Miami Gardens for Thursday, February 7th. Our monthly Brotherhood meeting will take place on the bus ride to Miami Gardens, so we don't expect too much to be accomplished this night. Except a lot of fun!

Take an opportunity to join our Brotherhood and see some of the things we do here in the Brotherhood at Temple Beth El. You never know who you will meet or whose lives you may impact.

—L'Shalom, Carlos



## upcoming events Register at [tbeboca.org/brotherhood](http://tbeboca.org/brotherhood).

### Trip to Topgolf

**Thursday, February 7, 2019**  
**5:30pm, bus leaves from the**  
**Schaefer Family Campus**

\$75 per person for Brotherhood members, including bus, TopGolf and dinner  
\$90 per person for guests for TopGolf and dinner, plus \$30 for the bus

Topgolf is golf on steroids. Join us for two hours of fun and games at this state of the art facility in Miami Gardens, including food and beverage. From non-golfer to PGA Professional, this event is made for everyone to participate and have a great time. Our monthly Brotherhood meeting will take place on the bus ride to Miami Gardens, so we don't expect too much to be accomplished this night. Except a lot of fun!

### Brotherhood Night with David Samson

**FORMER PRESIDENT OF THE MIAMI MARLINS**

**Thursday, January 31, 2019 | 7:30pm**  
**Silver Companies Garage**  
**1001 E. Telecom Drive**  
**Boca Raton**

\$40 per person for Brotherhood members,  
\$50 for guests; includes food and drinks

David Samson will be visiting with the Temple Beth El Brotherhood to share his experiences in professional baseball, including a World Series title, and how his Jewish heritage has influenced his life. You will not want to miss this event which will be held at the Silver Companies "Garage" on Yamato Road. It is a special venue with uniquely special items for all of us to enjoy throughout the evening.



# JANUARY 2019

SUNDAY	MONDAY	TUESDAY	WEDNESDAY	THURSDAY	FRIDAY	SATURDAY
		<b>1</b> New Year's Day School and Offices Closed	<b>2</b> 1/02 - 1/05-ELC WINTER CAMP IN SESSION (BFC)  7:00 PM-Adult B'nai Mitzvah Class	<b>3</b> 12:00 PM-College Homecoming Lunch	<b>4</b> 6:00 PM-Shabbat Service	<b>5</b> 9:30 AM-Shabbat Morning Torah Study 11:30 AM-Bar Mitzvah of Noam Erez
<b>6</b> No Religious School	<b>7</b> ELC Resumes	<b>8</b> 12:00 PM-Lunch and Learn 4:30 PM-Religious School (BFC) 5:00 PM-BOFTY Board Meeting (BFC) 6:00 PM-High School Tuesday Night Teen Dinner (BFC) 7:00 PM-6th Grade Hebrew Class Tuesday Night (BFC) 7:00 PM-Shir Shalom - Adult choir 7:00 PM-High School Grade 9, 11 and 12 Classes (BFC) 7:00 PM-Confirmation Class (BFC)	<b>9</b> 1/9 - 1/16-Peace of Mind Israeli Soldier Hosting (OOT) 4:30 PM-Religious School (BFC) 7:00 PM-Adult B'nai Mitzvah Bima Rehearsal 7:30 PM-Intro to Judaism 7:30 PM-Civil Discourse	<b>10</b> 4:30 PM-Religious School (SFC & BFC) 6:00 PM-Sisterhood - Mah Jongg 6:30 PM-Brotherhood Board Meeting (BFC)	<b>11</b> 6:00 PM-Intro to Judaism Shabbat Dinner 6:00 PM-Tot Shabbat Shirah Pizza Dinner (BFC) 6:00 PM-Peace of Mind Shabbat Dinner 6:30 PM-Tot Shabbat Shirah Service (BFC) 7:30 PM-Shabbat Service	<b>12</b> 9:30 AM-Shabbat Morning Torah Study 10:45 AM-Adult B'nai Mitzvah 5:00 PM-Family Havdalah (BFC) 6:30 PM-Tribes Naphtali, Gad & Asher: Havdalah Happening (BFC)
<b>13</b> 7:30 AM-Gift of Life Walk (OOT) 9:30 AM-Religious School (SFC & BFC) 11:30 AM-BOFTY's Pizza by the Slice Fundraiser for Camp Jenny (BFC)	<b>14</b> 7:00 PM-Membership Committee Meeting (OOT)	<b>15</b> 12:00 PM-Lunch and Learn 4:30 PM-Religious School (BFC) 6:00 PM-Middle School Tuesday Night Teen Dinner (BFC) 7:00 PM-Confirmation Class (BFC) 7:00 PM-Shir Shalom - Adult choir 7:00 PM-6th Grade Hebrew Class Tuesday Night (BFC) 7:00 PM-7-8th Grade Tuesday Nights (BFC) 7:00 PM-Information Meeting for Guardian Ad Litem Program (OOT)	<b>16</b> 4:30 PM-Religious School (BFC) 7:00 PM-Parishhood Meeting (BFC) 7:00 PM-Donor Appreciation Night	<b>17</b> 4:30 PM-Religious School (SFC & BFC) 7:00 PM-Board Meeting	<b>18</b> 6:00 PM-Shabbat Shirah Dinner 7:30 PM-Shabbat Service: MLK Shabbat, Shabbat Shirah 7:30 PM-Shabbat Club	<b>19</b> 9:30 AM-Everglades Shabbat (OOT) 9:30 AM-Shabbat Morning Torah Study 10:45 AM-Bar Mitzvah of Leah Hoffman
<b>20</b> No Religious School 10:00 AM-Sacred Aging - There's No Place Like Home!	<b>21</b> Tu B'Shevat Martin Luther King, Jr. Day School & Offices Closed 9:30 AM-City of Boca Raton MLK Jr. Day Celebration (OOT)	<b>22</b> 12:00 PM-Lunch and Learn 4:30 PM-Religious School (BFC) 6:00 PM-High School Tuesday Night Teen Dinner (BFC) 7:00 PM-6th Grade Hebrew Class Tuesday Night (BFC) 7:00 PM-Shir Shalom - Adult choir 7:00 PM-Confirmation Class (BFC) 7:00 PM-High School Grade 9, 11 and 12 Classes (BFC)	<b>23</b> 4:30 PM-Religious School (BFC) 6:00 PM-Mausoleum Committee Meeting 7:30 PM-Meditation 7:30 PM-Social Action Committee Meeting	<b>24</b> 4:30 PM-Religious School (SFC & BFC) 7:00 PM-Sisterhood Board Meeting 7:30 PM-Men's Study Group (OOT)	<b>25</b> 10:00 AM-Sisterhood Day Trip (OOT) 6:00 PM-3rd Grade Shabbat Dinner 7:30 PM-Shabbat Service: 3rd Grade Shabbat 7:30 PM-Kabbalat Shabbat Service	<b>26</b> 9:00 AM-Bar Mitzvah of Marilee Barrio 9:30 AM-Shabbat Morning Torah Study 10:00 AM-Family Fun Day (BFC) 11:30 AM-Bar Mitzvah of Lindsey Heller 6:30 PM-Adult Programming: Russia On the Rocks: Distillery Tour, Russia Talk and Regional Dinner (OOT)
<b>27</b> 10:00AM-3rd Grade Family Education Day (SFC) 9:30 AM-Religious School (SFC & BFC) 12:00 PM- Tu B'Shevat in the Trees with tribes Judah and Dan (BFC) 1:00PM-Senior Circle	<b>28</b>	<b>29</b> 12:00 PM-Lunch and Learn 4:30 PM-Religious School (BFC) 6:00 PM-Shir Chadash Rehearsal 6:00 PM-Middle School Tuesday Night Teen Dinner (BFC) 7:00 PM-Confirmation Class (BFC) 7:00 PM-Shir Shalom - Adult choir 7:00 PM-6th Grade Hebrew Class Tuesday Night (BFC) 7:00 PM-7-8th Grade Tuesday Nights (BFC)	<b>30</b> 4:30 PM-Religious School (BFC) 7:30 PM-Intro to Judaism	<b>31</b> 4:30 PM-Religious School (SFC & BFC) 7:30 PM-Brotherhood Night with David Samson (OOT)		



# FEBRUARY 2019

SUNDAY	MONDAY	TUESDAY	WEDNESDAY	THURSDAY	FRIDAY	SATURDAY
<b>3</b> <b>9:30 AM</b> -Religious School (SFC & BFC) <b>12:00 PM</b> -Kindergarten Superbowl Sunday (BFC)	<b>4</b>	<b>5</b> <b>12:00 PM</b> -Lunch and Learn <b>4:30 PM</b> -Religious School (BFC) <b>5:30 PM</b> -Facilities and Technology Meeting <b>6:00 PM</b> -Shir Chadash Rehearsal <b>6:00 PM</b> -High School Tuesday Night Dinner (BFC) <b>7:00 PM</b> -6th Grade Hebrew Class Tuesday Night (BFC) <b>7:00 PM</b> -Shir Shalom - Adult choir <b>7:00 PM</b> -Confirmation Class (BFC) <b>7:00 PM</b> -High School Grade 9, 11 and 12 Classes (BFC)	<b>6</b> <b>4:30 PM</b> -Religious School (BFC) <b>6:30 PM</b> -Emerging Leaders (BFC) <b>7:30 PM</b> -Intro to Judaism	<b>7</b> <b>2/07 - 2/10</b> -11-12th Grade Retreat (OOT) <b>4:30 PM</b> -Religious School (SFC & BFC) <b>5:30 PM</b> -Brotherhood Toga and Board Meeting (OOT)	<b>1</b> <b>5:45 PM</b> -2nd Grade Shabbat Pizza Nosh <b>5:45 PM</b> -Shabbat Club <b>6:00 PM</b> -Shabbat Service: 2nd Grade Shabbat	<b>2</b> <b>9:30 AM</b> -Shabbat Morning Torah Study <b>5:30 PM</b> -Bat Mitzvah of Lylah Beck
<b>10</b> <b>9:30 AM</b> -Religious School (SFC & BFC) <b>12:00 PM</b> -Tribes Mythical, Gad and Asher, Bop into Boomers (OOT) <b>3:00 PM</b> -Feelin' Groovy Cantor Lori Shapiro & Friends in Concert	<b>11</b>	<b>12</b> <b>12:00 PM</b> -Lunch and Learn <b>4:30 PM</b> -Religious School (BFC) <b>5:00 PM</b> -BOFTY Board Meeting (BFC) <b>6:00 PM</b> -Shir Chadash Rehearsal <b>6:00 PM</b> -Middle School Tuesday Night Teen Dinner (BFC) <b>7:00 PM</b> -Confirmation Class (BFC) <b>7:00 PM</b> -Shir Shalom - Adult choir <b>7:00 PM</b> -6th Grade Hebrew Class Tuesday Night (BFC) <b>7:00 PM</b> -7-8th Grade Tuesday Nights (BFC)	<b>13</b> <b>9:15 AM</b> -Parenthood Meeting (BFC) <b>4:30 PM</b> -Religious School (BFC) <b>6:30 PM</b> -Emerging Leaders <b>7:00 PM</b> -Sisterhood Board Meeting (BFC) <b>7:30 PM</b> -Intro to Judaism	<b>14</b> <b>4:30 PM</b> -Religious School (SFC & BFC) <b>7:30 PM</b> -Men's Study Group (OOT)	<b>15</b> <b>2/15 - 2/18</b> NFTY Convention (OOT) <b>ELC - NO SCHOOL - STAFF DEVELOPMENT DAY (BFC)</b> <b>11:00 AM</b> -HUC Alumni Lunch <b>6:00 PM</b> -HUC Dinner-Healing Division (BFC) <b>6:30 PM</b> -Family Participation Pizza Dinner (BFC) <b>7:00 PM</b> -Family Participation Service (BFC) <b>7:30 PM</b> -Shabbat Service with lecture "Raising 100 Voices"	<b>16</b> <b>9:00 AM</b> -Shabbat Breakfast with Rabbi Andrea Weiss <b>9:30 AM</b> -Shabbat Morning Torah Study <b>11:30 AM</b> -Bat Mitzvah of Sidnie Passeroff <b>6:00 PM</b> -Bat Mitzvah of Harley and Marina Fowler
<b>17</b> <b>No Religious School</b> <b>2:00 PM</b> -New Member Meet & Greet (OOT)	<b>18</b> <b>President's Day</b> <b>School and offices closed</b>	<b>19</b> <b>12:00 PM</b> -Lunch and Learn <b>4:30 PM</b> -Religious School (BFC) <b>6:00 PM</b> -High School Tuesday Night Teen Dinner (BFC) <b>7:00 PM</b> -6th Grade Hebrew Class Tuesday Night (BFC) <b>7:00 PM</b> -Shir Shalom - Adult choir <b>7:00 PM</b> -Confirmation Class (BFC) <b>7:00 PM</b> -High School Grade 9, 11 and 12 Classes (BFC)	<b>20</b> <b>4:30 PM</b> -Religious School (BFC) <b>6:30 PM</b> -Emerging Leaders (BFC) <b>7:30 PM</b> -Intro to Judaism	<b>21</b> <b>4:30 PM</b> -Religious School (SFC & BFC) <b>7:00 PM</b> -Board Meeting (BFC)	<b>22</b> <b>9:15 AM</b> -Parent Workshop (BFC) <b>7:30 PM</b> -Shabbat Service: 5th Grade Shabbat <b>7:30 PM</b> -Kabbalat Shabbat: Seen and Unseen God	<b>23</b> <b>8:00 AM</b> -Habitat for Humanity Build (OOT) <b>9:30 AM</b> -Shabbat Morning Torah Study <b>10:45 AM</b> -Bat Mitzvah of Even Lansburgh <b>5:00 PM</b> -Bat Mitzvah of Emily Singer <b>5:00 PM</b> -BOFTY & JR. BOFTY Miami Heat Game
<b>24</b> <b>10:00 AM</b> -Kindergarten Family Learning Day (SFC) <b>9:30 AM</b> -Religious School (SFC & BFC)	<b>25</b> <b>7:30 PM</b> -Evening of Meditation, Music, Chanting with Netanel Goldberg	<b>26</b> <b>12:00 PM</b> -Lunch and Learn <b>4:30 PM</b> -Religious School (BFC) <b>6:00 PM</b> -Middle School Tuesday Night Teen Dinner (BFC) <b>7:00 PM</b> -Confirmation Class (BFC) <b>7:00 PM</b> -Shir Shalom - Adult choir <b>7:00 PM</b> -6th Grade Hebrew Class Tuesday Night (BFC) <b>7:00 PM</b> -7-8th Grade Tuesday Nights (BFC)	<b>27</b> <b>4:30 PM</b> -Religious School (BFC) <b>6:30 PM</b> -Emerging Leaders <b>7:30 PM</b> -Intro to Judaism	<b>28</b> <b>4:30 PM</b> -Religious School (SFC & BFC) <b>7:00 PM</b> -Program Evaluation Task Force (BFC)		



LAW OFFICE OF MARK A. SCHAUM, P.A.

Wills & Trusts | Estate and Charitable Planning  
Estate and Trust Administration | Taxation and Business Formation

With over 25 years of experience as a Board Certified attorney, Mark A. Schaum, Esq., CPA provides the knowledge, reliability and integrity you need to protect your most important asset...*your family.*



PRESERVING YOUR *Legacy*



MARKSCHAUMLAW.COM  
561.750.7575 | information@markschaumlaw.com  
1801 N. Military Trail, Suite #160  
Boca Raton, Florida 33431

Law Office of Mark A. Schaum, P.A. proudly serves clients throughout  
Palm Beach County and Broward County

\*Board certified in Wills, Trusts & Estate Law

## REAL ESTATE IN THE BERKSHIRES



STEVE ERENBURG  
m 413 663 0457



COHEN + WHITE  
ASSOCIATES

DISTINCTIVE TOWN and COUNTRY PROPERTIES

413 637 1086  
47 CHURCH STREET LENOX, MA  
www.cohenwhiteassoc.com

## Yahrzeit Fund

Gifts from 09/13/2018 – 11/19/2018  
in memory of

Wendell Ellis by Jannette Abejean  
Elliot Adelman by Terry & Sheldon Adelman  
Daniel Goldstein by Terry Adelman  
Robert B. Frank by Priscilla & Len Adler  
Marian Altman by Beverly & Joel Altman  
Joanna and Joseph Altner by Sandi & Bob Altner  
Carl Krawchenko by Sandi & Bob Altner  
Fred Appel by Benita & Stuart Appel  
Norma Dulman by Amy Appel  
Max E. Arno by Maxine Arno  
Morris Matz by Barbara Arnold  
Julius Aronson by Marian Aronson and Irene Aronson  
Gertie Rapp by Rhoda Augustower  
Benjamin Nerenberg by Leslie & Michael Baron  
Alvin Samuel Baumoehl by Gail, Jerome & Josh Baumoehl  
Stephen Beiner by Judith Beiner  
Herbert Feldman by Susan & Michael Benenson  
Jeannette Glickman by Marjorie & Dennis Berg  
Ferdinand Paroulek by Alexandra Paroulek-Bergbauer & Mike Bergbauer  
Herman Berger by Linda & Bill Berger  
Evelyn Manning by The Berger Family  
Samuel Shank by Toni & Arnold Berliner  
Stanley P. Shindell by Sindy & Bob Berman  
Oscar Maier by Judy & Mike Blackman  
David B. Roth by Betsy & David Blechman  
the loved ones of Estelle Bloch by Estelle Bloch  
Edward Bobick by Marianne Bobick  
Fritz Findler by Marianne Bobick  
Peter Findler by Marianne Bobick  
Jeanne Bowen by Jules Bowen  
James Bransdorf by Beverly & Marvin Bransdorf  
Mildred Brock by George Brock  
Gordon Brown by Joan Brown  
Donna Seidenstein by Sharon Buchhalter Goldstein & Adrian Buchhalter  
Edith Copulsky by Maxine & Joseph Copulsky  
Nat Schneier by Maxine & Joseph Copulsky

Louis Danetz by Ellen & Stephen Danetz  
Herman Hess by Shirley & Warren Deutsch  
Belle Scherer Hammer by Saralyn & Gerry Dicker  
Al Drucker by Selma Drucker  
Sigmund Dubrow by Marion Dubrow  
Rita F. Abbott and Ida S. Epstein by Irene, Dr. Merrill, Jennifer & Melissa Epstein  
Milford Denny Faust by Marlene Faust  
Joseph Field by Joan & Franklyn Field  
the mother of Elinor Josephson by Gertrude Finger  
Sophie Fink and Philip Fink by Phyllis Fink  
Israel Ouziel by Sybil Firestone  
Yakov Fishman by Zina Fishman  
Morton Abrams by Carol & David Gart  
Phyllis Gart by Carol & David Gart  
Stanley Kuttler by Lucille Kuttler Geller  
Libby P. Gesoff by Jean & Mark Gesoff  
Rose Kippel Agruss by Betty A. Ginsburg  
William E. Gladstone by Marilynn B. Gladstone  
Dora Glazer by Janice Levites & Alan Glazer  
Victor Glazer by Janice Levites & Alan Glazer  
Anna Gold and Louis Wohl by Anne & Jerry Gold  
Dr. Michael Zamore by Anne & Jerry Gold  
Max M. Lavine by Rita Goldfine  
Ilene Gordon by Judy & Jim Gordon  
Ruth Tauber by Judy & Jim Gordon  
Mace Hirschman by Luanne Hirschman-Gotterer and Larry Gotterer  
Adrian Gould by Lewis Gould  
Duff Greenbaum by Fran Greenbaum  
Herbert M. Schwarz by Laurie & Jon Greene  
David Grossman by Susan Y. Grossman  
Sandra Bossie-Bloom by Julie Guzy  
Lillian Schuman by Stephanie & Robert Halio  
Harvey Abrams by Adele Haymes  
Harold Haymes by Adele & Ed Haymes  
Ida Singer, Albert Weil, and Rona Weil by Rhea Herman  
Maurice Benjamin Cohen by Brigitte & Bruce Himelstein  
Sidney Manoff by Robin Hirsch



## Mazel Tov To

Samantha and Ron Barhai on the birth of their son, Cooper Reid Barhai

Edythe and Theodore Davis on the birth of their great-granddaughter, Arly Maren Dinovitser

Naomi Denish and Amalio Nieves on the birth of their grandson, Sebastian Giampa

Penny and Stuart Fleischer on the birth of the granddaughter, Tess Margot Greenwald

Phyllis and Randy Goin on the birth of the grandson, Randell Everett Goin III

Sarah Hart and Chris Aziz on the birth of their daughter, Emerson Beth Aziz

Amanda and Jared Pliskow on the birth of their son, Spencer Hudson Pliskow

Erica and Darren Sevel on the birth of their daughter and Cindy Korshin on the birth of her granddaughter, Lily Talia Sevel

Erika and John Sirianos on the birth of their granddaughter, Francesca Maria Guerra

Amy and Steve Stein on the birth of their granddaughter, Margaret "Maggie" Rose Stein

Murray Brown on the engagement of his granddaughter, Amy Nadler to Joe Caplan

Pam Nadler and Mark Sickles on the engagement of their daughter, Amy Nadler to Joe Caplan

Mark Sunshine and Christy McElhaney on the engagement of their son, Ryan Sunshine to J'cee Hyatt

Amy and Jeff Grossman on the marriage of their daughter, Lauren Grossman to Jonathan Wax

Paul Jacobs on the marriage of his daughter, Kirby Jacobs to Ben Kaplan

Marileidys Navarro-Gil and Yoelvis Lago on their marriage

Jane Skelton on the marriage of her daughter, Jennifer Shiroky to Perry Kochavi

Susie and Mark Tabor on the marriage of their son, Greg Tabor to Eden Hirsch

## Our Congregation Mourns

Robert Baer\*, brother of Cathy Stevens

Jacob Block, brother of Ruth LeFrock

Lenore Brachman, wife of James Brachman

Shirley Chavis, mother of Jan and Richard Chavis

Malcolm "Mal" Coleman, father of Carolyn and Jeffrey Coleman, grandfather of Carly and Jaclyn Coleman

Nancy Donner, mother of Robin and Eric Donner and Lisa and Richard Goldman, grandmother of Lital and Joshua Donner, Samantha Greenberg, Rachel and Melissa Goldman

Barry Gimelstob, brother of Elaine and Herb Gimelstob, son of Beatrice Gimelstob, uncle of Debra and Bruce Green

William Goldberg, grandfather of Delia and Jonathan Goldberg, great-grandfather of Julia and Henry Goldberg

Fanny Kaplun, mother of Liliana Abramson

Henry "Hank" Katz, husband of Deanna Katz, father of Cindy Katz Morton and Duncan Morton and Susan Geller, grandfather of Ian and Jason Morton and Matthew and Robert Geller

Marilyn Kraus\*, beloved member

Anna Lewin, mother of Barbara and Gerald Lewin, grandmother of Erika and Terence Harris and Jennifer and Laurence Kreger, great-grandmother of Benjamin and Sophia Harris and Charles and Annie Kreger

Mel Meckler\*, beloved member

David Perlmutter\*, husband of Barbara Perlmutter

Debra Pfeiffer, sister-in-law of Lisa and Ben Lusskin

Edwin Raflowitz\*, father of Tracy and Brett Raflowitz, grandfather of Brittni and Garrett Raflowitz

Stanley "Stan" Rassler, husband of Eleanor "Ellie" Rassler

Bernd Klaus Roberts, brother of Ursula "Peggy" Falk

Sylvia Robinson\*, beloved member

Marvin Sheinker, father of Melissa and Jack Sheinker, grandfather of Sydney Sheinker

Sandra Shore\*, beloved member

Melvyn Sternbach, father of Shari Sternbach

\*Laid to rest in the Beth El Mausoleum

# Law Office of Paul Jacobs, P.A.

*Practicing law in Boca Raton and  
Temple Beth El member for over 25 years*

**Personal Injury | Family Law | Civil Litigation**

Case evaluation at no charge

**PaulJacobsLaw.com**

**561-394-9099**



**Exceptional Student  
Education Advocate**

**Kandice Freedman**

M. Ed, Ed.D

*Long-time Temple Member*

[p] 561-866-8909

[e] [KandiceFreedman@gmail.com](mailto:KandiceFreedman@gmail.com)

[www] [ESEAdvocate.com](http://ESEAdvocate.com)

#### Services Offered:

- Attend IEP meetings
- Liaison between parent and school
- 504 Plans
- Evaluate student needs
- Increase services provided
- Acquire and increase McKay Scholarships
- Manifestation meetings
- Response to intervention meetings

*Bridging the gap between schools and parents;  
to ensure success for our exceptional students!*

## Yahrzeit Fund

CONTINUED FROM PAGE 32

Fran Shapiro by The Hoffmans  
Leon Fine by Sondra Homer-Warner  
Kenneth Wagner by The Horn Family  
Lynne Jackman by Herbert Jackman  
Marcella Jackman by  
Herbert Jackman  
Jacob Jacobson and Anna  
Resnick by Ruth Jacobson  
Lester Kaufman by Karen  
Kaufman & Family  
Celia Lind by Natalie Klebanoff  
Robert H. Lind by Natalie Klebanoff  
Murray Friedman and Kenneth R.  
Brooks by Penny Brooks Klein  
Bertha Borisky by Sara Jo Kobacker  
Ida Kobacker by Sara Jo Kobacker  
Mark Scharfberg by Marcia Koretsky  
Henry Goteiner by Sandy Kovalcik  
Sergio Colichesi by Bianca  
& Aaron Krickstein  
Harvey Lapin by Cheryl Lapin  
Milton Levenson by Ruth Levenson  
Martin Leventhal by Jane Leventhal  
Jesse Buck by Lois Levin  
Beth Levine by Russ Levine  
Daniel J. Klein by Carolyne  
& Ed Levy  
Hortense Klein by Carolyne  
& Ed Levy  
Lucy Levy by Carolyne & Ed Levy  
Annette Lichtenstein and  
Harry Lichtenstein by  
Sue Lichtenstein  
Jeanette Lind by Sarina & Jerry Lind  
Leonard Lokietz by Rita Lokietz  
Morris Grossman by Zelda  
Luxenberg  
Susan Malaga by Martin Malaga  
Israel Ouziel by Barbara  
& Marty Malaga  
Leonard Mandor by Natalia Mandor  
Albert Miller by Aviva and  
Rabbi Arnold Miller  
Sally Mackler by Debbie  
Mackler & Howie Mintz  
Lester Mintz by Debbie Mackler  
& Howie Mintz  
Gladys Morris by Barbara  
& Harvey Morris  
Natalie Moskowitz by  
Morris Moskowitz  
Frieda Kammerman by Cary Nation  
Stanley Mendygral by June Neal  
Esther Zudekoff by June Neal  
Libby Neuren by Arline Neuren  
Celia Wine, Beth Vincent,  
Sarah Dick, Harvey Dick  
and Morton Newman by  
Cheryl & Bob Newman  
Julie Newman by Lori &  
Richard Newman  
Albert Katz by Natalie Pelavin  
Manfred Pepper by Martha Pepper

Hyman Malik by Bonnie  
& Henry Pikkell  
Ina R. Pitt by Michael Pitt  
Fred Pollak by Philip Pollak  
Louis Pollak by Philip Pollak  
Alan W. Pollak by Sarah Pollak  
Daisy Lewis Straas by Sarah Pollak  
Mildred Straas by Sarah Pollak  
Gregory Ponczek by Lisa &  
George Ponczek  
Belle and Charles Presser  
by Roberta Presser  
Scott Putesky by Sandy Putesky  
Charles J. Rassler by Ellie Rassler  
Elsie Press by Sherry Redler  
Nellie Tuschman by Idah Robins  
Gerald Rosenfeld by Arline  
& Ernie Rosenfeld  
Philip Rosenfeld by Arline  
& Ernie Rosenfeld  
Leslie Rosengarden by Ardath  
Rosengarden  
Jacob Rubenstein by Laurie Silvers  
& Mitchell Rubenstein  
Tilla Sherman by Laurie Silvers  
& Mitchell Rubenstein  
Fannie Rubenstein by Myra  
Rubenstein  
Max Slotnick by Sheila & Phil Rubin  
Golde Yagolnitzer by Sheila  
& Phil Rubin  
Pauline Mellman and Martin  
Mellman by Tobe Rubin  
Elsie Greenfield by Jackie  
& Mark Saltzman  
Lillian Sandhaus by Elaine  
Schlessberg  
Seymour Newman by Linda  
& Robert Schmier  
Leslie Schmier by Linda &  
Robert Schmier  
Esther Schuster by Arline  
Schuster and Stephanie  
& Steven Schuster  
Bessie Schuster by Rita &  
Tully Schuster  
Melvin B. Clayton by Leslie  
Clayton Schwam & Family  
Harold Dolby by Leslie Schwam  
David Einbinder by Amy Segel  
Harry Friedman by Roberta  
& Lorrie Shafer  
Molly Shuchat by Jackie &  
Jeffrey Shuchat  
Bessie Sloatsky by Jill &  
Alan Sloatsky  
Linda Green by Marsha  
& Dave Snyder  
Walter Green by Marsha  
& Dave Snyder  
Bernice Spiegelman by  
Jerry Spiegelman  
Martin Stein by Edith Stein



# Yahrzeit Fund

Alter Stoler by Francine  
& Jeffrey Stoler  
Jeannette Stoler by Francine  
& Jeffrey Stoler  
Victor Stone by Nanci & Fred Stone  
Raymond Sussberg by Janet  
& Allan Sussberg  
Barbara Wolfe by Lisa Swartz  
Jane H. Gilbert, Benjamin Hantman  
and Goldie Hantman by  
Susie & Mark Tabor  
Arthur J. Tamchin by Barbara  
& Len Tamchin  
Rachel Broomberg Tamchin by  
Barbara & Len Tamchin  
Pearl Lightman Alt by Rasheena,  
David, Ella & Ari Taub  
Hyman Taub by Ronna & Marc Taub  
Pearl Alt by Ronna & Marc Taub  
Henry Streisfeld by Beth Tavlin  
Mina Marder by H. Lee Toback  
Michael Jacobson by Lauren  
& David Tolces  
Alben Tufel by Ann & Sherman Tufel  
Allan Ageloff by Ann &  
Sherman Tufel  
Frances Pick by Alice Turner  
Charles Twer and Beatrice Twer by  
Barbara Zallea & Daniel Twer

Dr. Stella Wachslar by  
Emanuel Wachslar  
Harry Spiegel by Lois Weber  
Shirley Spiegel by Lois Weber  
Randy Weil by Renee Weil  
Bernice Weishoff by Steven Weishoff  
Irene Tirck by Jacquelyn  
& Al Wheeler  
Dr. David Wulkan by Darlene,  
Jessica & Dr. Adam Wulkan  
David Leon Goldfield by Marilyn  
& Hubert Wulkan  
Dr. David Wulkan by Marilyn  
& Hubert Wulkan

Griffin  
Ancient Art

561-994-0811  
www.griffingallery.net  
Judith Beiner



5501 N Federal Hwy, Boca Raton, FL 33487  
*Special discounts for Beth El members*



Stewart  
Fine Art

561-995-2760  
www.SFAGallery.net  
Sonny Stewart

*Experience Excellence in Therapeutic Rehabilitation, Nursing & Medical Care*



REHAB  
RECOVER  
RELAX



*Regents Park  
of Boca Raton*

A Skilled Nursing and  
Rehabilitation Facility

SNF License #1466096

561.483.9282 6363 Verde Trail, Boca Raton, FL 33433 www.regentsparkbocaraton.com

# In Memory of

Gifts from 9/13/2018 to 11/19/2018

## 50TH ANNIVERSARY YOUTH TRAVEL TO ISRAEL

in memory of

June Dayan by Patty & Louis Beck  
Joseph Sloodsky by Patty & Louis Beck

## ANNUAL GIVING

in memory of

June Dayan by Helene & Jay Eichler

## DR. MELVIN HOMER ENDOWMENT FUND

in memory of

Helen Jane Barr Friedman by  
Cindy & Paul Homer

## EARLY CHILDHOOD SCHOLARSHIP FUND

in memory of

Hank Katz by Ann & Sherman Tufel

## GELFAND/ARPE YOUNG CHILDRENS INNOVATIVE EDUCATION

in memory of

Kathryn Adams by Michael Gelfand  
June Dayan by Michael Gelfand

## GENERAL FUND

in memory of

Burt Aronson by Jean Satin

June Dayan

by Nancy Bailin & Cindy Bailin  
and Gray

by Linda & Bobby Schmier

Martin Feuerman by Marni &  
Michael Feuerman

Beverly Fine by Judith Chason

Shane Gilbert

by Helene Levine

by Judith & Gary Nath

Jane Greenberg by Stephanie

& Steven Schuster

Hank Katz

by Sandy, Arnie, Alisa, Michael

& Laura Dashefsky

by Robert & Betsy Manela

by Marilyn Rothstein

by Carolyn Saffer and Arlene

Malkin

by Lynn & Don Waldman

Marilyn Kraus by Zelda Luxenberg

Anna Lewin

by Rita & Spencer Kreger &

Jessica Kreger

by Mimi & Len Leeds

by Barbara & Jeff Rosenberg

by Stephanie &

Steven Schuster

Maxine Lyons Silver by

Judith Chason

Harold Lynn by Stacey &  
George Luck

Lesley and Mel Meckler by  
Cathi Fleet Robinson

Melvin Meckler

by Randy Schwartz

by The Ralby Family

Rita Melis by David Hanowitz

& Eric Gottlieb

Stanley Rassler

by Phyllis & Stanley Scher

by Donna Weiss

Scott Reit by Lorraine Reit

Alan Rubinstein by Cis Teltser

Stanley Scher by Cis Teltser

Joseph Sloodsky

by Betsy & David Blechman

by Dale & Edward Filhaber

by Linda & Bobby Schmier

Judson "Jud" Wolfe by Marilyn  
& Robert Dragin

Jarvis Weiss by Marjorie &  
Michael Weiss

## GIVING TREE FUND

in memory of

Saul and Pearl Cohen by Leon Cohen

Rita Fischer by Aline Fisher

Hank Katz by Aline Fisher

Stanley Rassler by Aline Fisher

## ISRAEL YOUTH TRAVEL FUND

in memory of

June Dayan by Aline Fisher

Dr. Alexander S. Fisher

by Aline Fisher

Elizabeth Unger Fisher

by Aline Fisher

Lena Fisher by Aline Fisher

Marilyn Kraus by Aline Fisher

Joseph Sloodsky by Aline Fisher

## JAN AND ALLEN LEV ENDOWMENT FUND

in memory of

Malcolm "Mal" Coleman by

Jan & Allen Lev

June Dayan by Jan & Allen Lev

Rita Fischer by Jan & Allen Lev

Fanny Kaplun by Jan & Allen Lev

Hank Katz by Jan & Allen Lev

Debra Pfeiffer by Lisa & Ben Lusskin

## MYER WEINGARTEN ENDOWMENT FUND

in memory of

Jerry Burger by Iris Weingarten

## PLOUGH FAMILY FUND SUPPORTING RELIGIOUS SCHOOL

in loving memory of

June Dayan by Margie Plough  
& Maurice Plough, Jr.

Fanny Kaplun by Margie Plough  
& Maurice Plough, Jr.

## RABBIS' DISCRETIONARY FUND

in memory of

Mitchell Agruss by Betty Ginsburg

Phyllis Botoff by Ronna & Marc Taub

Jean Kippel Drobner by

Betty Ginsburg

Mark Ginsburg by Betty Ginsburg

Stan Jakalow by Barbara

& Harvey Morris

Jay Kanter by Fern Kanter

& Scott Gershaw

Carole R. Mitnick by Hermine Lesser

Stanley Rassler by Lenora Lassen

Elinor Rothstein by Elaine Colker

Marie Rudick by Jerry Rudick

Ben Singer by Rhea Herman

Fay Sperling

by Barbara & Jerry Lewin

by Karen & Howard Weiss

Judson Wolfe

by Barbara & Jerry Lewin

by Karen & Howard Weiss

William Goldberg by Woodfield

Tennis Team Division 6

## RELIGIOUS SCHOOL FUND

in memory of

June Dayan by Robin Eisenberg

& Andy Broido

Joseph Sloodsky by Robin

Eisenberg & Andy Broido

Jud Wolfe by Robin Eisenberg

& Andy Broido

Theo Eskow by Susan & Mark Sosin

Sidney Kaminsky by the  
Warren family

## RICHARD ALLEN BRANSDORF MEMORIAL ENDOWMENT FUND

in memory of

Jason Bransdorf and Sidney

Robinson by Beverly &

Marvin Bransdorf

Jason Bransdorf by the

Warren family

Ida Berman Rosen by Beverly

& Marvin Bransdorf

## SAMUEL & MOLLIE LUKS ENDOWMENT FOR SPECIAL NEEDS EDUCATION FUND

in memory of

Philomine Smith by Karen

& Jan Kaplan

## SAMUEL & MOLLIE LUKS SHABBAT MORNING MINYAN ENDOWMENT FUND

in memory of

Jerry Forman by Fran Weinberg

Samuel H. Luks by Fran Weinberg

## STEVE BROWN ENDOWMENT FUND

in memory of

Joseph Sloodsky by Dana Brown

## TREES TO ISRAEL FUND

in memory of

Marilyn Milkis by Arianne

& Reve Block

Eli Feigel by Liliana &

Aaron Sheinfeld

Helen Cohan by Susan & Jerry Wolf

# Sisterhood Contributions

## VOLUNTEER FUND:

speedy recovery of Debi Jackman

by Dr. Merrill, Irene, Melissa

and Jennifer Epstein

in honor of Jan Lev's 70th birthday

by Dr. Merrill and Irene Epstein

in Memory of Irwin Futerfas by

Irene, Dr. Merrill, Melissa

and Jennifer Epstein

## YES FUND:

in honor of:

the Bar Mitzvah of Susan and

Mark Sosin's grandson by

Judy and Mike Kornitsky

Elinor Josephson by Judy

and Mike Kornitsky

Rabbi Jessica Brockman by Judy

and Mike Kornitsky

Rabbi Dan Levin by Judy

and Mike Kornitsky

Rabbi Greg Weisman by Judy

and Mike Kornitsky

Cantor Lori Shapiro by Judy

and Mike Kornitsky

Cantorial Soloist Michelle

Ausländer Cohen

## IN MEMORY OF:

Fanny Kaplun, mother of Liliana

Abramson, by Shari, Craig

Schwamm and Family





Call for a Consultation with Dr. Levine  
Brand New High Tech Location!

**561-391-6500**

Temple Beth El members over 25 years  
Comprehensive Restorative Dentistry  
7126 Beracasa Way, Boca Raton, FL 33433



**LevineDentist.com**

**Larry A. Levine, D.D.S.**  
**Audrey Rosen Levine, D.D.S.**

## *Trusted, Comfortable and Caring Dentistry*



DOUGLAS A. ROLFE, DDS, PA COSMETIC AND FAMILY DENTISTRY

With compassion and integrity, our friendly caring team provides the highest quality dental care near **Temple Beth El**. Equipped with state of the art dental imaging and an experienced and caring staff, my practice is unconditionally committed to the comfort and satisfaction of my patients.

**ANNOUNCING** *The New Easy Dental X-Ray* allows for taking your check up X-rays **outside** your mouth with incredible comfort and clarity. No more biting, gagging and pinching inside your mouth in most cases! Patients love how easy and comfortable it is.

Choosing a dentist is an important decision, so do the research and then decide. My practice is FIVE star ★★★★★ reviewed on **Yelp\*** and **Google**. Please take a moment to read our reviews. We are currently accepting new patients so please call us today!

**D.A. Rolfe, DDS, PA 333 Camino Gardens Boulevard • Boca Raton Florida 33432**  
**www.DrRolfe.com • Phone: 561.395.4500**

***Proudly caring for Temple Beth El families for over 20 years!***



**ADA American Dental Association®**  
America's leading advocate for oral health

**AAO American Academy of Cosmetic Dentistry®**

# A FAMILY FILM



TELL THE STORY OF  
YOUR FAMILY  
AND PRESERVE IT  
FOREVER

Contact Lee Gladstone  
lee@afamilyfilm.com 561.325.1266  
www.afamilyfilm.com

## Accounting and Financial Services

- Reconcile Bank Statements
- New Business Set Up
- Monthly & Quarterly Reporting
- Personal Bill Pay & Accounting
- Payroll Services



- QuickBooks Training/Support
- Professional Advisor

Vicki Garfinkel, CPA  
561-212-4222

VGarfinkelCPA@gmail.com

## In Honor of

Gifts from 09/13/2018 – 11/19/2018

### AMY S. KLEIN SHAPIRO MEMORIAL EDUCATIONAL FUND

in honor of  
Marilyn Anderson by Penny  
& David Klein

### CANTOR STEPHEN DUBOV CONCERT ENDOWMENT FUND

in honor of  
the wedding of Meredith Ringler and  
Steve Fuller by Linda Sommers

### GENERAL FUND

for the recovery of  
Barry Podolsky by Freyda & Ed Burns  
Mel Slater by Phyllis & Eddie Elman  
Sophie Friedman by Phyllis  
& Eddie Elman  
Ron Abramowitz by Phyllis  
& Eddie Elman  
Eileen Star by Phyllis & Eddie Elman  
Bruce Schwed by Phyllis  
& Eddie Elman  
Steven Star by Phyllis &  
Eddie Elman

in honor of  
the engagement of Rabbi Jessica  
Spitalnic Brockman  
and Mitchell Mates by  
Freyda & Ed Burns

the confirmation of Sydney Levy  
by Phyllis & Eddie Elman

the Bar Mitzvah of Nate Levy by  
Phyllis & Eddie Elman

the birthday of Stephen Barr  
by Norma Emrick

Bonnie and Hank Pikkell by  
Susan Selnick-Gordon  
& Jeffrey Gordon

Mitchell LaBoff by Sandy Putesky  
the Finch and Fine families by  
Dorothy & Seymour Robbins

Debra and Josh Marcus by  
Gail & Jim Satovsky

the birthday of Alyse Schoenfeldt  
by Roberta & Lorrie Shafer

in support of  
the Early Learning Center for their  
care and in support of the  
Jewish community following  
the tragedy in Pittsburgh  
by Marianne Porter

to thank  
Rabbi Dan Levin for the important  
role he played in the  
wedding of Julie Magid to  
Darrin Gershman by Julie  
& Darrin Gershman

### GIVING TREE FUND

in honor of  
Lisa Franklin by Liz & Larry Dinner  
Davynn and Ella Martinoff by  
Brooke & Andrew Eisenberg  
Myra and Rabbi Merle Singer  
by Cindy & Paul Homer  
Jacob Rispler by Jill & Greg Rispler

### JAN AND ALLEN LEV ENDOWMENT FUND

in celebration of  
Margot Claire Smith receiving  
her Hebrew name by  
Jan & Allen Lev  
the engagement of Ryan Zucker  
by Jan & Allen Lev  
in honor of  
Aline Fisher for your friendship  
by Jan & Allen Lev  
with gratitude  
to Susan and Barry Podolsky for  
their warm and welcoming  
friendship by Jan & Allen Lev  
Andrea and Mark Platt for their  
friendship by Jan & Allen Lev

### MIRIAM AND ALBERT ZWICK ENDOWMENT FUND

in honor of  
Lisa and Andrew Zwick's  
commitment and support  
to Israel by Susan &  
Barry Podolsky

### MUSIC FUND

in honor of  
the Bar Mitzvah of Zachary Wurman  
with thanks to Cantor Lori  
Shapiro by Ellen & Ed Pollock

### MYRA R. SCHWARTZ CANTORIAL MUSIC FUND

to thank  
Cantor Lori Shapiro for making  
Kirby's wedding wonderful  
by Paul Jacobs

### PROJECT NUREMBERG PROJECT

to support  
the Peace of Mind program  
benefitting Israeli combat  
soldiers by Carole &  
Samuel Karsch

### RABBIS' DISCRETIONARY FUND

in honor of  
Rabbi Dan Levin and the Bat  
Mitzvah of Gabrielle Hecht by  
Maxine & Joseph Copulsky  
Rabbi Jessica Brockman by  
Ann & Dennis Deutsch



# In Honor of

the B'nai Mitzvah of Lindsey and Danielle by Susan & Peter Feldman  
the marriage of Ariel Brownstein and Matt Friedman by Sheldon Golub  
the Bar Mitzvah of Ryan Grandis by Kathy & Devin Grandis  
Rabbi Greg Weisman and the Brit Milah of Spencer Hudson Pliskow by Dr. Andrew Krinsky  
the birth of Rye George Kovalcik by Sandy & Jim Kovalcik  
Rabbi Dan Levin and the June 2018 Temple Beth El trip to Israel by Barbara Harper  
Cindy and Paul Homer by Sondra Homer Warner  
Charles H. Lesser by Hermine Lesser  
Zachary Wurman's Bar Mitzvah with thanks to Rabbi Jessica Spitalnic Brockman by Ellen & Ed Pollock  
Rabbi Dan Levin, Rabbi Jessica Spitalnic Brockman and Rabbi Greg Weisman for all their work for the community by Sheila & Phil Rubin  
Jennifer Shiroky and Perry Kochavi's wedding by Jane Skelton

Rabbi Greg Weisman by Joseph Sontz  
the Bar Mitzvah of Joseph Sosin by Susan & Mark Sosin  
the Bar Mitzvah of Cameron Swartz by Marla & Jonathan Swartz  
the birth of Layla Hodaya Weisman by Barbara Spielman  
Rabbi Greg Weisman by Susie & Mark Tabor  
Rabbi Dan Levin and Cantor Lori Shapiro for officiating at the wedding of Michelle Wohlgenuth and Brett Cooper by Ilene & Peter Wohlgenuth  
Gerald Zensky's commitment to Liliana Abramson by Gerald Zensky  
the birth of Layla Hodaya Weisman by Barbara Zipkin  
in appreciation of Cantor Lori Shapiro for the beautiful Shiva service for Muriel Weiss by Shelley & Barry Hymowitz  
in support of Sherry and Ken Endelson and their family in memory of their recent losses of Fay Sperling and Judson Wolfe by Silvana & Barry Halperin & Family on the occasion of

the 80th birthday of Rabbi David Spitz by Sue & Rabbi David Spitz  
to thank Rabbi Jessica Spitalnic Brockman and Rabbi Greg Weisman for their well wishes for Eileen Eisenberg by Fran & Michael Eisenberg  
Rabbi Dan Levin for the unveiling service for Bruce Hausman by Barbara & Bob Hausman  
Rabbi Jessica Spitalnic Brockman for making Kirby's wedding wonderful by Paul Jacobs  
Rabbi Jessica Spitalnic Brockman for her help and support by Eric Kraus  
Rabbi Dan Levin for performing a beautiful wedding ceremony by Debra & Ian Nestler  
Rabbi Dan Levin, Rabbi Jessica Spitalnic Brockman and Cantor Lori Shapiro for the bima blessing on the Pollock's 53<sup>rd</sup> anniversary by Ellen & Edward Pollock  
Rabbi Levin for officiating at their Chanukah ha'bayit by Jill & Greg Rispler

with appreciation for the Aliyah on the High Holy Days by Aline Fisher  
to Rabbi Dan Levin by Amy & Lester Mallet  
with gratitude by Judith Beiner  
for the High Holiday Bima honors by Debi & Herb Jackman  
to Rabbi Dan Levin by Jill & Paul Weiner

## **SAMUEL & MOLLIE LUKS ENDOWMENT FOR SPECIAL NEEDS EDUCATION FUND**

in honor of the 85th birthday of George Rattner by Fran Weinberg

## **TZEDAKAH FUND**

in honor of the birth of Merrill and Larry Kotok's grandson by Rabbi Richard Address



FUNERAL DIRECTORS SINCE 1892

# Guttermans

# Warheit

MEMORIAL  
CHAPEL

*One of The Largest  
Family Owned & Operated  
Jewish Funeral Homes  
Since 1892*

### **Directors:**

**PHILIP GUTTERMAN • STEVEN KANOWITZ  
KENNETH J. LASSMAN • PAUL LIBSMAN**

Leading Pre-Arrangement Specialists for all your Medicaid & Estate Planning Needs.  
In Home Appointments Available

**7240 North Federal Hwy, Boca Raton FL 33487**

# 1-800-992-9262

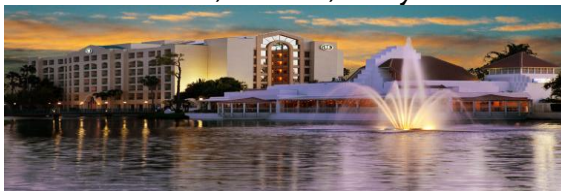
**Serving Miami-Dade, Broward, Palm Beach & Martin Counties**

In Greater New York, Guttermans Inc.: ROCKVILLE CENTRE, L.I. 516-764-9400  
WOODBURY, L.I. 516-921-5757 • BROOKLYN 718-284-1500

**MONUMENTS BY GUTTERMAN'S** [www.guttermansinc.com](http://www.guttermansinc.com)

## Exclusively for Temple Beth El

The Hilton Boca Raton Suites offers discounted rates to all members, affiliates, family & friends.



Your travelers will enjoy:

- **Spacious Two Room Suite**
- **Complimentary full cooked to order breakfast** each morning
- **Complimentary** two hour **cocktail reception** each evening
- **Complimentary local transportation** within the Boca Raton area
- Located **just minutes from Temple Beth El**, area attractions and local beaches
- For reservations call **561-483-3600**. Be sure to ask for the special discounted **Temple Beth El Rate**.



7920 Glades Road • Boca Raton, FL 33434  
www.bocaratonsuites.hilton.com

## Gifts

Gifts from 09/13/2018 – 11/19/2018

### DISASTER RELIEF FUND

Rita Digiantomasso  
Carolyn & Ed Levy

### GENERAL FUND

Trudy Ehrlich  
Margaret & Harold Eichler  
Cindy and Peter Goffin  
Elaine Rizzo  
Taly Rosa  
Sondra Saewitz  
Sondra Smith  
Terran Wallace  
Richard K. Weiss  
Ida & Hugh Williams

### RABBIS' DISCRETIONARY FUND

Susan Bloom  
Barry Fleishman  
Lauren & Alan Gross  
Bonita Lepene  
Hermine Lesser  
Michael Lipton  
Cindy & Duncan Morton  
Debby & Joel Neiterman  
Michael Waxman/Donald D. Rogers Foundation, Inc.  
Jill & Paul Weiner

### TZEDAKAH FUND

Suzanne & Jeffrey Katz

## Giving Tree Fund

Gifts from 09/13/2018 to 12/19/2018

Jess & Jeff Adelman  
Anita Morse & Cory Adler  
Stan Bass  
Ruth Berg  
Ferne & Bill Berger  
Toni & Arnold Berliner  
Beverly & Marvin Bransdorf  
George Brock  
Mimi & Lois Brodsky  
Freyda & Ed Burns  
Judith Chason  
Maddi & Wes Finch  
Hinda & Marvin Finston  
Linda & Leon Finver  
Lorraine & Howard Freeman  
Ethel Gordon  
Gladys & Arnold Granet  
Carolyn & Michael Grimes  
Sheilah & Bob Harrow  
Diane & Saul Hoppenstein  
Carol & Bob Johnson  
Suzanne & Jeffrey Katz  
Linda & Kenneth Keyes  
Natalie Klebanoff

Lorri & Ken Klein  
Janet Kottler  
Sherry Lee  
Gail & Barry Levine  
Rick Levitt  
E.J. & Steve Manton  
Pamela & Paul Matsil  
Janie & Martin Milner  
Ellen O'Connell  
Howard Pasekoff  
Margie Plough & Maurice Plough, Jr.  
Linda Rabin  
Myrna & Norm Ricken  
Patricia & Stanley Schneider  
Lori Shapiro  
Marilyn & Morris Siegelman  
Alan Siemens  
Toby Sloane  
Leslie & Rick Steinberg  
Anne & Robert Sullivan  
Kay & Jerry Tamarkin  
Elvira Velez  
Leslie Viselman  
David Weinstein  
Evelyn Weitzman

## South Florida Real Estate

# SHELDON JAFFEE

- World Class Service
- In-Depth Knowledge of the Market
- Experience Since 1976

*"It's about following through on promises and getting results."*

**561-395-8244**

waterfrontandluxuryestates.com



LANGREALTY





## Donna Klein Jewish Academy

is one of the premier Jewish day schools in the country. Step onto our campus and feel the energy of a diverse, inclusive community joined in a love of knowledge and the joy of learning. Listen to our teachers as they inspire and instruct each student. Look closely at the dynamic, enriched curriculum that prepares our students for the best colleges and universities in the country and around the world.

**Visit DKJA and you'll discover an education of extraordinary Power and Purpose.**



# INSPIRING THE MINDS THAT WILL CHANGE THE WORLD

**ACADEMIC SCHOLARSHIPS AVAILABLE FOR INCOMING 9TH GRADERS  
TUITION ASSISTANCE | TRANSPORTATION AVAILABLE**



**DONNA KLEIN  
JEWISH ACADEMY**

9701 Donna Klein Blvd., Boca Raton  
K-12 | 561.852.3300 | [DKJA.net](http://DKJA.net)



**Schedule your personal tour of  
DKJA today!**

561.852.3310 | [admissions@dkja.net](mailto:admissions@dkja.net)

Does your Ob-Gyn value an integrated approach to your care?

Tired of not feeling your best?

Want to be as healthy as you can be but don't know where to start?

CALL US. We answer with individualized care for women at all stages of life.

*Terrence W. Harris, MD*

TERRENCE W. HARRIS, MD  
WOMEN'S WELLNESS EXPERT



## WOMEN'S WELLNESS CENTER

OBSTETRICS | GYNECOLOGY | WELLNESS



Call 561-826-3800  
[www.harrisobgyn.com](http://www.harrisobgyn.com)

VISIT [HARRISOBGYN.COM](http://HARRISOBGYN.COM) OR CALL. WE CAN HELP.  
2500 North Military Trail Suite 111 Boca Raton, Florida 33431



**O'HARA**  
PEST CONTROL

**561-655-9011**  
[oharapestcontrol.com](http://oharapestcontrol.com)

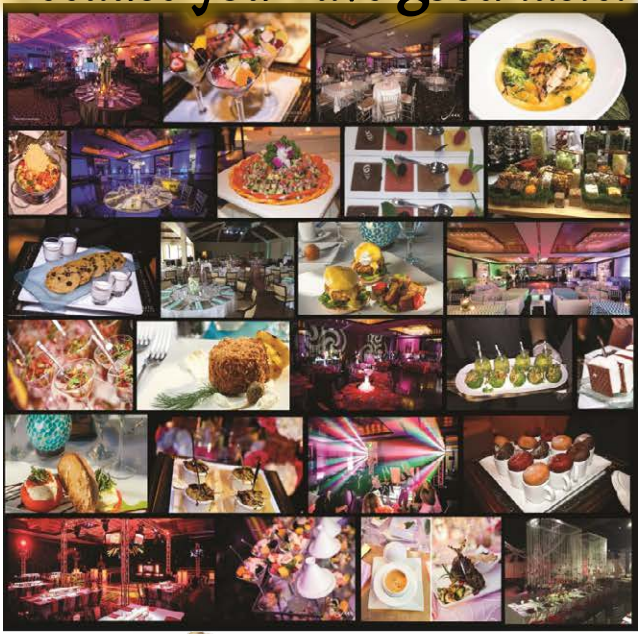


*Smiles by*  
**Dr.W & Dr.R**

QUALITY ORTHODONTICS THAT WILL MAKE YOU SMILE

Phone: (561) 483-0072 (954) 346-0770  
[www.orthodonticsofsouthflorida.com](http://www.orthodonticsofsouthflorida.com)

**Because you have good taste.**



**ARTISAN**  
FOODS CATERING

[artisanfoodsinc.com](http://artisanfoodsinc.com)  
[info@artisanfoodsinc.com](mailto:info@artisanfoodsinc.com) 954.983.5338

#### TEMPLE OFFICERS

Mark Sunshine	President
Wendy Walin	Executive VP
Barry Podolsky	Immediate Past President
Bruce Moldow	VP of Finance
Patty Beck	VP of Leadership Development & Governance
Aline Fisher	VP of Religious Activities
Michael Frost	VP of Development
Gina Shugar	VP of Engagement
Barbara Leventhal	VP of Education
Rick Steinberg	VP of Social Action
Brett Schneider	Secretary
Lauren Gross	VP of Early Learning Center
Shari Schwamm	VP of Membership
Ilyne Mendelson	VP of Mausoleum
Jeff Katz	VP of Facilities and Technology

#### TRUSTEES

Marla Schaefer	Peter Wohlgemuth	Lisa Glass
----------------	------------------	------------

#### LEADERSHIP COUNCIL

Marc Applebaum*	Stanley Gray	Maurice Plough, Jr.
Debbie Averbook	Larry Hotz	Barry Podolsky*
Patty Beck*	Karyn Hoffman	Morris Robinson
Adam Bershad	Jennie Kreger	Carlos Romero
Jack Bershad	Jamie Kshonz	Debbie Rosenblum
Mike Blackman	Allen Lev	Dina Schwartz
Danielle Butler	Steve Manton	Mike Singer
Jenn Gene	Marjorie Minor	Rabbi Merle Singer
Herbert Gimelstob*	Mark Platt*	Jill Weiner
Rikki Goldenberg	Margie Plough	Lisa Zwick
Ken Gordon		

#### TEMPLE LEADERS OF BLESSED MEMORY

James B. Baer*	Ida Herst*	Stanley Rose
Donald Berger	Joseph Q. Kline	Albert Schiff*
Frances Cohen	LTC Ben Lake	Bernard H. Shulman*
Stanford Hermann	Cis Rader	Alan H. Weiner*
	Irving Rifkin	

#### PROFESSIONAL STAFF

Rabbi Daniel Levin  
Rabbi Jessica Spitalnic Mates  
Rabbi Greg Weisman  
Cantor Lori Shapiro  
Michelle Auslander Cohen, CANTORIAL SOLOIST  
Rabbi Merle Singer, D.P.S., D.H.L., D.D., RABBI EMERITUS

Steve Kaufman, EXECUTIVE DIRECTOR  
Mark Erickson, DIRECTOR OF FINANCE  
Susan Stallone, DIRECTOR OF MARKETING AND COMMUNICATIONS  
Jason Reasor, DIRECTOR OF FACILITIES  
Elinor Josephson, DIRECTOR OF ENGAGEMENT AND PROGRAMMING  
Mike Sirowitz, MAUSOLEUM DIRECTOR  
Leslie Viselman, DIRECTOR OF DEVELOPMENT  
Rita Diamond, OPERATIONS AND ADMINISTRATION MANAGER

#### MAIMONIDES INSTITUTE FOR JEWISH LEARNING

Heather Erez, DIRECTOR OF YOUTH EDUCATION AND ENGAGEMENT  
Amanda Charson, ASST. DIRECTOR OF YOUTH EDUCATION AND ENGAGEMENT (GRADES K-6)  
Melissa Abell, ASST. DIRECTOR OF YOUTH EDUCATION AND ENGAGEMENT (GRADES 7-12)  
Cindy Korshin, CO-DIRECTOR OF EARLY LEARNING CENTER  
Ronni Graf, CO-DIRECTOR OF EARLY LEARNING CENTER  
Robin Eisenberg, RJE, DIRECTOR OF JEWISH LEARNING AND LIVING EMERITA

\*Past President



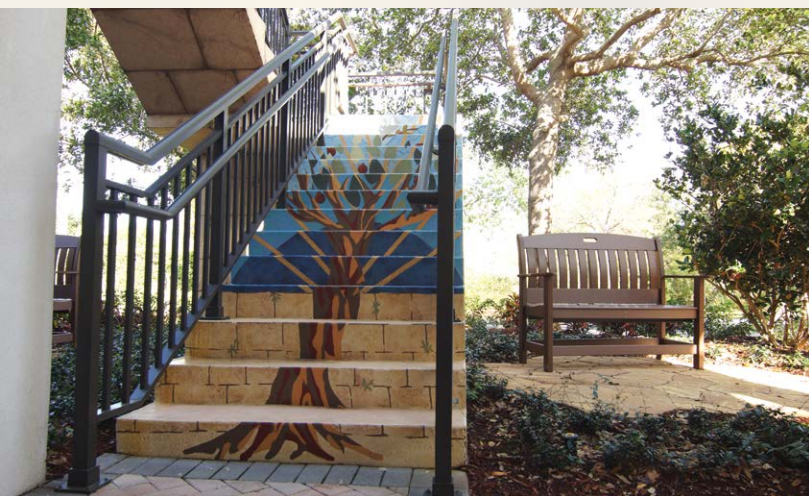
**Schoefer Family Campus** 333 SW 4<sup>th</sup> Avenue | Boca Raton, FL 33432 | 561 391 8900

**Beck Family Campus** 9800 Yamato Road | Boca Raton, FL 33434 | 561 391 9091

[www.tbefl.com](http://www.tbefl.com)



# Beth El Mausoleum



## Planning Pays Off

Pre-planning removes the burden from your family and ensures your wishes are honored.

It is also the most economical choice, offering significant discounts and 0% financing.

If you have questions about Jewish traditions regarding end of life or about our Mausoleum, the Beth El Mausoleum Director and Temple Beth El clergy are always here to help.

Call today for a private tour.

**Beth El Mausoleum. You'll never walk alone.**



561 391 8900 [bethelmausoleum.org](http://bethelmausoleum.org)

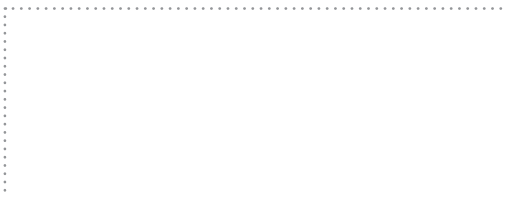




333 SW 4<sup>th</sup> Avenue | Boca Raton, FL 33432

Non-Profit  
Organization  
U.S. POSTAGE  
PAID  
Boca Raton, FL  
Permit No. 37

CURRENT RESIDENT OR



**DATED MATERIAL | PLEASE RUSH**

A Reform congregation affiliated with The Union for Reform Judaism



**FLORIDA  
SPINE  
ASSOCIATES**  
TAKE BACK YOUR LIFE

**Boca Raton**

670 Glades Rd. Suite 200  
Boca Raton, FL 33431

**Delray Beach**

5162 Linton Blvd. Suite 203  
Delray Beach, FL 33484

**Pompano Beach**

1 W. Sample Rd., Suite 303  
Pompano Beach, FL 33064

**561.495.9511**

For more information, visit our website at  
[www.floridaspineassociates.com](http://www.floridaspineassociates.com)

**Brian J. Burrough, MD, MSPT**

Pain Medicine & Anesthesiology  
Fellowship Trained, Interventional Pain Medicine  
Board Certified Anesthesiologist

**Richard M. Foltz, MD, FAANS**

Fellow American Association of Neurological Surgery  
Fellow American College of Surgeons  
Board Certified Neurosurgeon

**Robert P. Norton, MD, FAAOS**

Board Certified, Fellowship Trained  
Orthopedic Spine Surgeon  
Associate Professor, FAU - College of Medicine



**COMPREHENSIVE SPINE CARE  
and  
ADVANCED TECHNOLOGY**

(From Adult Deformity to Minimally Invasive Spinal Procedures)

**Conditions we treat:**

Compression Fractures	Sciatica
Degenerative Disc Disease	Scoliosis
Fractures	Spinal Stenosis
Myelopathy	Post Laminectomy Syndrome
Neck Pain	Spinal Arthritis
Muscular Strain/Sprain	Sacroiliac Joint Dysfunction
Back Pain	Herniated Discs
Spondylolisthesis	Complex Spinal Disorders