

# the chronicle

TEMPLE BETH EL OF BOCA RATON

MAY/JUNE 2024 | NISAN/IYYAR/SIVAN



**Annual  
MEETING**

PAGE 4 - 8

**Strategic  
PLAN**

PAGE 9 - 11

**Blue Jeans  
SHABBAT**

PAGE 15





## Create a Space that **Defines You**

A home is a reflection of its owners. Who they are, what they've achieved, the life they've led—a home tells a story. What does your home say about you?

At Brown, we have been motivated by a desire to better serve our customers for more than 40 years, gracing their homes with the style, sophistication, elegance and warmth that captures the essence of those who live in them. Let us help you tell your story. Stop by our state-of-the-art showroom today for a consultation.

**BROWN**<sup>™</sup>  
CREATIVE. INTERIOR. DESIGN.

4501 N FEDERAL HIGHWAY, BOCA RATON, FL 33431 | 561.368.2703 | INTERIORS BY BROWN.COM | LICENSE #IBF000548

# Generating Bonds of Love

BY RABBI DAN LEVIN  
dlevin@tbeboca.org

Over the past two years, Temple Beth El has worked to build a strategic plan that will guide our congregation as we move into the future.

Hundreds of members representing the wide spectrum of the Temple Beth El family participated in surveys, focus groups, and interviews to help us better understand the needs and hopes of our congregation.

While processing all of this data, we on the Strategic Planning Task Force spent hours thinking about what is the mission of our congregation. After hours of discussion and conversation, our Board recently approved a new mission statement: “The Mission of Temple Beth El is to enrich lives by generating bonds of love through exceptional Jewish experiences.”

---

***Our Board recently approved a new mission statement: “The Mission of Temple Beth El is to enrich lives by generating bonds of love through exceptional Jewish experiences.”***

---

## **Why would that be our mission?**

Rabbi Shai Held wrote: “Judaism is about love. The Jewish tradition tells the story of a God of love who creates us in love and enjoins us, in turn to live lives of love.” Love is when we share the energy that lies at the core of our humanity and link it to the soul of another, so that two separate individuals share a bond that makes them one with each other.

In some respects, spirituality is really another word for love. Spirituality is about connection with the Divine – and love is about connecting the divinity in ourselves with the divinity in the other. As our sages taught, love for self, for the other, for the stranger, and for the Holy One - is the root of the entire Torah.

The Torah offers another mission statement: “You shall be holy...” (Leviticus 19:18). Our mission as Jews is simple: to maximize the experience of what it is to be human, and to build a world in which each and every one of God’s creations can experience the transcendent joy of holy life.



Think about those moments in your life when you felt that

sense of holiness. It is in moments when we feel love most intensely that we often feel the greatest sense of holiness and God’s presence. And when the bonds of love that give life meaning and purpose are broken, when we feel abandoned or alone, it is then we feel the greatest moments of anguish and pain.

So the mission of Temple Beth El is simple: use the extraordinary power of exceptional Jewish experiences to unleash the power found in the bonds of love we share so that our lives are enriched to their fullest capacity.

Temple Beth El does so many things for so many people. Together we observe Shabbat and holy days. We celebrate life cycle events. We care for each other through moments of anguish, disappointment, illness, and loss. We educate our children from their first months of life, teaching them the story and moral teachings of our people. We nurture the growth of our own adult spirituality through learning and exploration.

We devote ourselves to serving the needy, and to advocating for the moral truths Judaism demands we pursue. We nurture our connection and commitment to our people in Israel and Jewish communities around the world.

Through the bonds of love we generate, we will not only enrich our own experience of life, but we inspire holiness in all who share in the life of our congregation, our broader community, in Israel and throughout the world.

# Strategic



**INTRODUCTION BY  
WENDY WALIN**  
TEMPLE BETH EL  
PRESIDENT  
[wwalin@tbebo.ca.org](mailto:wwalin@tbebo.ca.org)

## Members of the Strategic Planning Task Force

*pictured left to right*

Mark Sunshine

Patty Beck

Karyn Hoffman

Gina Shugar

Wendy Walin

Rabbi Dan Levin

Rachel Baron

Jeffrey Katz

Susan Stallone

Steve Kaufman

Rabbi Greg Weisman

Barry Podolsky

*Not Pictured:*

Laura Abrams

Stefanie Goldberg Gonzales

**RIGHT** The Strategic Planning Task Force in front of the word cloud created by Temple Beth El from the results of the comprehensive survey

**The future success and vitality of Temple Beth El is of paramount importance, and strategic planning plays a central role in achieving this goal. With the completion of our comprehensive 3-5-year strategic plan, we have laid a solid foundation for guiding our efforts and focusing our resources on key areas of priority.**

Our strategic plan, developed with the expertise of consultants and input from a diverse task force of Beth El members and staff, identifies four strategic priorities that are essential to our continued growth and relevance:

- Youth & Family Education and Engagement
- Social Action and Social Justice
- Worship
- Financial Sustainability

These priorities reflect our commitment to nurturing the next generation, making a positive impact in our community, enriching our worship experience, and ensuring the long-term viability of our Temple.

The development of our strategic plan was a thorough and inclusive process, co-chaired by Susan Stallone, our Director of Marketing and Communications, and Gina Shugar, our Executive Vice President. The plan began with an environmental scan that included a temple-wide survey, 24 different focus groups, and 1:1 interviews with key

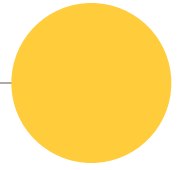
stakeholders. This extensive research and analysis provided valuable insights into the needs, aspirations, and concerns of our congregation, ensuring that our strategic priorities are aligned with the collective vision and values of our community.

As we move forward, our strategic priorities will serve as the roadmap for our continued success. By investing in youth and family education, advocating for social justice, enhancing our worship experience, and ensuring financial sustainability, we are positioning Temple Beth El to remain one of the largest and most exceptional synagogues in the country. Through proactive planning and thoughtful execution, we will continue to evolve and thrive, remaining steadfast in our commitment to serving our members and making a meaningful difference in the world. Together, we will build a vibrant and sustainable future for Temple Beth El, ensuring that our legacy of excellence endures for generations to come.





# Plan



## WHY DO A STRATEGIC PLAN?

The objective of the Strategic Plan is to provide Temple Beth El with a 3–5-year roadmap for where we want to go next. The fundamental question we addressed: Who does Temple Beth El want to be over its next iteration?

## Strategic Planning Process

We retained a consultant, Rabbi Lou Feldstein of Dynamic Change Solutions, who guided us through the process including research, in-depth analysis, thought exercises and recommendations. We assembled a Strategic Planning Task Force of Temple leaders representing a variety of demographics and temple tenure. The first step was to learn. We conducted a thorough environmental scan which incorporated data from a broad congregational survey, a series of focus groups and in-depth stakeholder interviews, as well as an analysis of source materials such as temple financial statements, fundraising and operating budgets, mission/vision documents, bylaws and annual reports, as well as studies of trends in the Jewish community, both nationally and in South Palm Beach County.

## Four Strategic Priorities

Based on in-depth data analysis and discussion, the Strategic Planning Task Force identified, and the Board approved, the following four strategic priorities. The Strategic Plan calls for allocating staff, financial resources, programs and initiatives to accomplish these goals over the next 3-5 years:



# 1

## YOUTH AND FAMILY EDUCATION AND ENGAGEMENT

**Create the most compelling model of youth and family education and engagement that integrates all temple member families into a single community.**

There is a desire among Religious School families to be more deeply integrated into the temple community. As such, there is a need to strengthen the interconnectivity of the Religious School and youth engagement programs with the temple as a whole, and to expand the scope of the Religious School to include broader family outreach and engagement.

- Create a stronger communication methodology for parents with children K-12 that fosters conversation about Religious School and temple topics.
- Continue to build and improve the Parent Tribe, building on the strength of the Early Learning Center's Parenthood organization, and fostering a positive impact on our community with roles that help parents feel connected.
- Formalize and improve the Early Learning Center to Religious School bridge, continuing to build from the earliest relationships in the Beth El community. Continue building bridges that will encourage student and family involvement through and beyond the students' high school years.
- Build meaningful, on-going relationships between clergy and Religious School families.
- Conduct an end-of-school-year survey to gauge improvement on parent satisfaction regarding education, communication and engagement.

## 2

### WORSHIP

**Implement a menu of diverse worship and spirituality offerings that are relevant today.**

Although there is a core of frequent attendees for Shabbat and other worship services, our worship opportunities do not reach and touch significant numbers of congregants in meaningful ways. There is a desire for greater worship diversity, innovation and meaning. Utilizing the Beck Family Campus for worship can provide opportunities for broader engagement with different populations, as well as greater innovation.

- Facilitate a culture shift from associating the Beck Campus with only education to associating the Beck Campus with both education and worship. Maximize the utilization of BOTH campuses for worship.
- Expand, improve and/or create Shabbat worship experiences to include diverse and appealing options for congregants.
- Increase in-person and virtual congregant attendance in worship services and spirituality programming.
- Reallocate clergy worship service attendance to ensure worship/spirituality offerings can be expanded with adequate clergy support.







3

**SOCIAL JUSTICE**

Enable congregants to be living exemplars enacting and advocating for Jewish moral values.

Social Justice/Social Action can be a primary means for members of our congregation to become involved in temple life. It also is a way for the temple to remain relevant in a modern society where there are so many meaningful causes our Jewish values teach us, we must not ignore. At the same time, we must tread carefully because Social Justice/Social Action can become potentially divisive depending on the topic or issue being addressed. Temple Beth El has the aspirational belief that it should be a leader enacting and advocating for Jewish moral values, yet we are currently operating in a haphazard manner.

**Striving for clarity of language, utilize the following structure and operating definitions**  
**SOCIAL JUSTICE** The umbrella term inspired by the Freyda and Ed Burns Social Justice Center at the Schaefer Family Campus, and defined as working to build a world that is more fair, a world without poverty, homelessness, or inequality.

*Two distinct areas of impact will fall under the umbrella of social justice:*

- **CIVIC ENGAGEMENT** Work that seeks to have long-term impact. It includes elements of organizing, public advocacy, and may include actions like petitions, voter awareness, and engaging with public officials.
- **SOCIAL ACTION** Work that seeks to address people's needs today. It includes feeding the hungry, clothing the naked, housing the unhoused, and is often what people are thinking about when they say "community service." While deeply impactful on the lived experience of the individuals who benefit from it, those impacts are typically short-term.

- Add a staff position for Social Justice who, along with the Vice President of Social Justice and members of clergy, will help build the new structure, identify potential leaders and volunteers, and liaise with the Social Justice Committee (previously known as the Social Action Committee) and The Giving Tree.
- Determine Temple Beth El's core Social Justice stances and Social Action and Civic Engagement initiatives.
- Create and communicate meaningful volunteer opportunities that fulfill core Civic Engagement and Social Action initiatives. The Giving Tree will remain a primary initiative for Social Action, growing its corps of volunteers and strengthening its impact on our community.
- Ensure adequate funding to effectuate these initiatives



# 4

## FINANCIAL SUSTAINABILITY

**Build a sustainable financial model that maximizes the financial resources available to pursue our mission and provide for long-term financial security.**

Temple Beth El's diversified revenue streams and judicious financial management have positioned the congregation well. However, there is strong acknowledgement that Temple Beth El needs to grow its endowment to secure the long-term financial sustainability of the congregation. The need to increase philanthropic giving, primarily through planned giving and a substantially larger endowment, is critical to the congregation's long term funding needs. Relying on year-after-year increases in Congregational Commitment is unlikely to be a sustainable funding model in the decades to come.

- Launch an endowment campaign welcoming both restricted and unrestricted gifts, with a major focus on unrestricted gifts.
- Establish a sophisticated planned giving structure to include various giving vehicles which provide meaningful ways to make a lasting impact
- Continue to explore new streams of revenue that would meaningfully contribute to the temple's bottom line while relieving some degree of financial burden to our congregants.



## MISSION STATEMENT

As part of the Strategic Plan, we re-examined our mission statement, and endeavored to identify the most core distillation of why we exist and what makes us uniquely Temple Beth El. First looking inward at our clergy, staff and leadership, and then outward at our amazing congregation and community, we knew that at our very core, Temple Beth El is about LOVE. And our most fundamental reason for being? To enrich the lives of ourselves and those around us who want to live a modern Jewish life. Our new mission statement strives to encompass that sentiment clearly and concisely.

**We Welcome  
Those who are seeking  
to live and support a  
modern Jewish life.**

**Our Purpose  
To enrich lives by  
generating bonds of  
love through exceptional  
Jewish experiences.**



## CONCLUSION

Strategic Planning is an essential tool for any organization to secure long-term success. For Temple Beth El, it reflects a deep commitment to our congregation, to our core Jewish values, and to sustaining the future of the Jewish people. We look forward to continuing on this journey together, and to making sure that Temple Beth El can continue to be a beacon for Jewish tradition, values and community, and a healing and comforting place of love for all.

For questions, or suggestions how to achieve these goals, please contact Steve Kaufman, Executive Director, at [skaufman@tbeoca.org](mailto:skaufman@tbeoca.org) or 561-391-8900.



COME TOGETHER TO CELEBRATE TEMPLE BETH EL

# Welcome to the 2024 Annual Meeting & Dinner

**THURSDAY**

**JUNE 6 | 2024**

**SCHAEFER FAMILY CAMPUS**

**6:00 PM**

**Mediterranean  
Dinner (optional)**

**6:30 PM**

**Annual Meeting**

Join us to honor our outstanding volunteers and professionals and celebrate this past year at Temple Beth El.

Dinner selection includes grilled salmon with lemon and dill, chicken scallopini in a marsala mushroom sauce, Florentine stuffed portobellos, garden salad, roasted veggies and more!

**Agenda for the Annual meeting includes:**

- Confirm the slate for the 2024-2025 Board of Trustees
- Present the 2024-2025 Operating Budget
- Present the Joseph Q. Kline Lifetime Achievement in Volunteerism Award
- Present the John Rogers Award for Exemplary Professional Service to one of Beth El's staff
- Present the Robin L. Eisenberg Learning and Living Award to an Early Learning Center teacher and a Religious School teacher.

**DINNER PRICES**

Adults: **\$29**

Children ages 5 -13: **\$16**

Under 5: **Free**

*Prices increase by \$5 after Friday, May 24, 2024.*

*Registration for dinner closes on Monday, June 3.*

Please register for dinner and/or the Annual Meeting at [tbeboca.org/annual-meeting](https://tbeboca.org/annual-meeting)



# The 2024 Honorees

## Barbara Feld

**RELIGIOUS SCHOOL WINNER OF THE ROBIN L. EISENBERG  
JEWISH LEARNING AND LIVING EDUCATOR OF THE YEAR AWARD**

Barbara Feld has been involved with Jewish studies for over 30 years. In New Jersey she worked on an educational curriculum to develop teaching techniques for children with learning challenges. She was a Hebrew teacher mentor for top tier teachers, assisting them in improving their skills. In the past 20 years, Barbara taught Hebrew and Judaic studies to all ages and started Torah tutoring for B'nai Mitzvah students, including those with learning challenges. Barbara was even featured on CNN for creating an Adult Anshei Mitzvah

“senior” class. She continued to follow her passion when joining the team at Temple Beth El of Boca Raton in 2016 as a B'nai Mitzvah tutor where she strives to allow each child the chance to reach their full potential. Barbara's vast experience and patience allows her the ability to understand every child's learning style and she derives so much joy from watching her students take a critical step in their Jewish journey by successfully having their Bar or Bat Mitzvah.



## Joanne Douma

**EARLY LEARNING CENTER WINNER OF THE  
ROBIN L. EISENBERG JEWISH LEARNING AND LIVING  
EDUCATOR OF THE YEAR AWARD**

Joanne has been an Early Childhood educator for over 20 years. She holds a Paralegal Studies certificate from Nova University as well as an Associate of Arts in Early Childhood Education.

Over the past 4 years she has served in both lead and assistant teaching positions, working with many different age groups at the Beth El Early Learning Center. Joanne is a dedicated, resourceful and goal driven educator.

She has a solid commitment to the social and emotional growth of every child. She is kind and caring to each of her students and their families. She is conscientious and works diligently to help each child build on their strengths and thrive. Joanne is a team player. She is flexible and considerate of others, going above and beyond to help other staff members.

Joanne believes that, “There is no better feeling than knowing you have helped brighten a child's day and seeing their faces and expressions while they experience and learn new things.”

We are so grateful to have Joanne on our teaching team!





# Mike Sirowitz

## 2024 JOHN ROGERS STAFF AWARD FOR EXEMPLARY PROFESSIONAL SERVICE

Mike Sirowitz, a native New Yorker, had the opportunity to retire early and relocate to Boca Raton in 2017. He immediately joined Temple Beth El, and became a valued member of the temple community. So much so that he agreed to “unretire” and become the Beth El Mausoleum Director when the opportunity arose. Since



then, Mike has helped countless people throughout the South Florida Jewish community with their end-of-life arrangements at the Beth El Mausoleum. Through his

kindness and expertise, he has earned the reputation as a warm and caring individual who is honored to help families and individuals every step of the way on what may be a difficult journey. Mike’s overall responsibility for the Beth El Mausoleum includes sales, operations, maintenance of the facilities, and funeral arrangements. Mike is responsible for scheduling and staffing every funeral that takes place at Beth El, which number about 100 per year.

You will often find Mike at the Temple on nights and weekends to help a family dealing with the loss of a loved one, or supporting other Temple programs. For example, Mike is the staff liaison to Brotherhood and to Beth El Pride, the Temple’s LGBTQ+ group. He is the first one to volunteer whenever we need extra staff support at large events. Mike personifies what this award is all about – someone who goes above and beyond their job description for the benefit of the organization.

# Marilyn Simon Weinberg

## JOSEPH Q. KLINE LIFETIME ACHIEVEMENT IN VOLUNTEERISM AWARD

Marilyn Simon Weinberg is a major supporter of Temple Beth El and Jewish organizations throughout South Palm Beach County and Virginia. She and her husband Jay chaired Temple Beth El’s 50th Anniversary Gala, raising funds for teen travel to Israel, and were Honorary Chairs for the Temple’s Gala of Gratitude and Love Honoring Rabbi Dan Levin. They are ongoing underwriters and Honorary Chairs of the annual Project Nuremberg Lawyers Luncheon at Beth El, which brings the lessons of the Nuremberg War Crime Trials into the present day. Marilyn is a major supporter of JAFCO (Jewish Adoption and Family Care Options), Jewish Family Services and the United Jewish Federations. She has raised millions of dollars for scholarships for returning veterans and first-generation students, including matching gifts from the state of Florida and the GI Bill. In 2022, Marilyn received the Rotary Club of Boca Raton’s OPAL (Outstanding People and Leaders) Award for Philanthropic Leadership.

In 2023, Marilyn began fundraising efforts at Florida Atlantic University bringing awareness to The Wallach Holocaust Center, to which she is a major supporter. The new building is expected to open in the Fall of 2024. She also chaired major fundraisers



from 2008 through 2014 for the Holocaust and Human Rights Education Center at Florida Atlantic University.

Last year, Marilyn began her involvement in The Boca International Jewish Film Festival. Together, she and her husband Jay underwrote the Marilyn & Jay Weinberg Film Festival Series.

October 7th, 2023 was a day to never forget for our Jewish people. Marilyn is a major supporter of Israel and

took an active role in supporting and fundraising for Friends of the IDF. Through the Marcus Foundation, she is currently funding and supporting the Underground Blood Bank. In conjunction with Friends of the IDF, she led the “Bubbe” Program with Israel Heart2Heart. Marilyn is a huge funder and advocate for the program; and with her generous efforts, our Israeli soldiers received an abundance of vests, ammunition and other necessary supplies to aid in their fight of this war of a lifetime.

# Membership Renewal News

**New  
Membership  
Year starts  
July 1, 2024**

We appreciate your membership at Temple Beth El, and look forward to providing many new opportunities to learn, connect, participate in acts of Tikkun Olam (repairing the world), and to grow spiritually. Additionally, you can engage with other members through

are pleased to let you know that we are not raising the mandatory Security Fee, despite a significant increase in our costs of providing security since the attack on Israel on October 7, 2023. We are able to keep the Security Fee flat at \$325 per household thanks to the one-time special assessment we implemented in February 2024, combined with a generous grant we recently received from the Florida Department of Education.

*You will receive an email in mid-May notifying you of your renewed membership. As in the past, your membership will automatically renew, including your method and frequency of payment, unless you notify us otherwise. Payments start on July 1, 2024 and your current payment method on file will be used to process the payments.*

We strive to enhance the value of your membership, including continued elimination of both the Building Fund and Bar/Bat Mitzvah fees. Your temple membership includes membership to Brotherhood, Sisterhood and ARZA (The Association of Reform Zionists of America, the Israel arm of the Reform Movement). Our Strategic Plan, which was developed over the past two years with consultants, staff and many of your fellow congregants, has set Temple Beth El on a path of strategic priorities. By offering new and different opportunities for engagement, the value of your membership will increase even more.

Beth El Circles (over 40 affinity groups to choose from), Beth El Chavurot (friendship groups), Sisterhood, Brotherhood, Parenthood, Youth Engagement and more.

You will notice a modest increase in Congregational Commitment rates next year, necessary to keep pace with inflation. We

**We look forward to your continued membership. Here's how membership renewal works:**

1 You will receive an email in mid-May notifying you of your renewed membership. As in the past, your membership will automatically renew, including your method and frequency of payment, unless you notify us otherwise. Payments start on July 1, 2024 and your current payment method on file will be used to process the payments.







**2** You will receive email and text message reminders of your payment processing prior to the charge date of July 1, 2024.

**3** Next year, we are no longer able to offer a three-month payment option. Those members who have been paying via the three-month option will be converted to monthly payments starting July 1, 2024 and ending April 1, 2025. Anyone wanting to choose payment in full instead of monthly payment should contact the membership or finance departments directly.

Please contact Elinor Josephson, Director of Member Engagement and Programming, at [ejosephson@tbeboca.org](mailto:ejosephson@tbeboca.org) or 561-314-2833 with questions about membership or Congregational Commitment. If you have a billing question, please contact Billing Support at [billingsupport@tbeboca.org](mailto:billingsupport@tbeboca.org).

Thank you so much!



# WELCOME

## Celebrating New and Returning Members

Welcome New and Returning Members who have joined between November 28, 2023 and March 25, 2024. Additional members not listed at the time of printing will be included in our next list! For help getting involved, please contact Elinor Josephson, Director of Engagement and Programming, at [ejosephson@tbeboca.org](mailto:ejosephson@tbeboca.org) or 561-391-8900.

- |  |  |
|--|--|
| Zachary & Alyssa Baker and their child, Logan                          | Sadie Mitnick  |
| Sandra & Eric Benyamini  | Badger Moring Jr. & Kaley Dalton and their child, Melody Rose    |
| Randi Berg   | Donna Mullaugh   |
| Ken Burian & Lisa Weisberg and their children, Noah & Haley            | Kevin & Alexis Neiman  |
| Myrna & Lenny Comerchero   | Abe & Janice Obuchowski  |
| Mitch Covitz & Lisa Adler  | Nina & Jon Owens and their children, Aidan & Benjamin            |
| Lanie & Irwin Danels   | Josh & Allison Padowitz and their children, Noah & Dylan         |
| Tia & Grant Disick and their children, Noah & Sam                      | David & Tamara Palkovitz and their children, Hudson & Quincy     |
| Amy Dweck  | Liz & Brent Reitman and their children, Eli & Isaac              |
| Jose Drowne & Polly Emery and their child, Stephen                     | Carole & Ron Ries  |
| Beth Fisher  | Lisa Runsdorf  |
| Rita Fisher  | Daniel & Carolina Sands  |
| Claire & Jarrod Friedman and their children, Levi, Khai & Jesse        | Joel Schartoff   |
| Shirly Gilad and her child, Milo                                       | Barry & Joanne Schwartz  |
| Emily & Alvin Goldgram   | Dennis & Robyn Seff and their children, Zoey, Tyler & Jake       |
| Ryan Paunovich & Andi Goldstein and their child, Davi                  | Louise Shindler  |
| Gary Goodman & Kari Zimmerman  | Elisabeth Sunkin & Michael Shuman                                |
| Jon Green  | Marc & Rita Solomon  |
| Bonnie & Howard Grossman   | Debby & Meredith Tache and their child, Abraham                  |
| Joan Haberman  | Robin Traiger  |
| Keith Hauser & Allison Poss-Hauser and their children, Hudson & Sydney | Angela Turturo-Tsygan  |
| Dan & Katie Herrera and their child, Charles                           | Aliya & Oron Unger and their children, Charlize & Brady          |
| Steve Holzman  | Jason Weg & Susie Federman and their children & stepchildren,    |
| Kathy Horwitz  | Larry & Malka Weinberg   |
| Marie Houde-Shulman  | Bruce Weitz  |
| Elisa Jones and her child, Taylor                                      | Joseph & Megan Wheelock and their children, Beckett, Wyatt & Zoe |
| Patti Lieb   | Rachel Oleck & Zack Widmann                                      |
| Roxane & Michael Lipton  | Sheryl Wolf  |
| Brandon Luskin and his child, Ryan                                     | Robyn & Bernie Wollstein   |
| Eddie & Marilyn Maller   | Alona Yeshayav and her child, Eden                               |
| Tracy Rafael & Andrew Mason  | Harriet "Gigi" Zeller  |
| Sonia Matz   | Judi Zimmermann  |
| Wendy & Steve Mendel   |  |
| Marcia Miller  |  |
| Shelley & Mark Minsky  |  |

# Welcome Rabbi Laila Haas!

A talented teacher and an innovative leader, Rabbi Haas brings to Temple Beth El a passion for Jewish life and a broad range of rabbinic experience. Ordained by the Hebrew Union College – Jewish Institute of Religion in 2011, Rabbi Haas spent the first seven years of her career as the Associate Rabbi at Temple Emanu-El in Birmingham, Alabama. During her tenure there, Rabbi Haas built a robust adult-education program, established an innovative process for engaging new members, and leveraged her creativity in Temple programming and strategic planning. In addition, she founded “The Discovery School” – Temple Emanu-El’s preschool which grew to more than 90 students in just its second year. She also helped to develop and implement an innovative curriculum for their religious school.

Since 2018, Rabbi Haas has served as Director of Adult Learning and Growth for the Center for the Advancement of Jewish Education in Miami. There she created a new strategic vision for adult learning and growth for the entire Miami

Jewish community, helping to grow attendance by more than 20 percent each year. She led her agency’s response to the COVID pandemic, quickly pivoting to provide learning and engagement opportunities online, providing a vital lifeline to hundreds of people suffering from loneliness.

A native of Miami Beach, Rabbi Haas graduated from the University of Miami, and also earned a Masters of Educational Administration from Xavier University.

Rabbi Haas will begin her service to Temple Beth El on June 1. We hope you will take advantage of our first opportunity to meet her at Temple Beth El’s Annual Meeting on Thursday, June 6 and at Shabbat on Friday, June 7. We are thrilled to welcome Rabbi Haas, her husband Will Evans, and their three-year-old son Asher to our Temple Family.



## Tikkun L’Eil Shavuot

A CELEBRATION OF THE GIFT OF TORAH FOR THE FESTIVAL OF SHAVUOT  
ENCOUNTERING SINAI: THE PRACTICE OF PRESENCE AND LIVING WITH AWE  
LED BY RABBI LAILA HAAS

**Tuesday, June 11**  
**7:30 pm**  
**Schaefer Family Campus**

On Shavuot we are called back to Sinai to relive the experience of revelation. This encounter offers meaningful insight to enhance how we live our lives.

Revelation is more than a specific event: it is an ongoing journey of awe-inspiring wonder. For Rabbi Abraham Joshua Heschel it is expressed by “living life in radical amazement.” Together, guided by the teachings of great Jewish thinkers and contemporary voices, we will explore how being present and attuned to awe engages our spirit, deepens our connections and invites us to seek out the extraordinary in the ordinary.

Come celebrate Shavuot with an extraordinary evening of study and engagement. Followed by a delicious dairy oneg.

Register at [tbeboca.org/shavuot](https://tbeboca.org/shavuot)



# Celebrate!

# Israel

## BLUE JEANS SHABBAT

An Israeli-themed musical Shabbat celebrating our Jewish Homeland

**FRIDAY** | **MAY 17 | 2024**  
**SCHAEFER FAMILY CAMPUS**

**6:00 PM**  
*Beyachad,  
Together, We are One*

**7:30 PM**  
*Delicious Israeli-inspired  
dinner, catered by Olive U*

Break out your blue jeans, blue and white shirts and ruach (spirit) to rock out to an Israeli-themed service followed by a yummy Shabbat dinner celebrating our Jewish homeland.

If you have a friend or family member who is in the IDF, we invite you to join us this Shabbat for prayers for their healing and safety. We will also be hearing an update on the front lines from Noam Goldberg, the brother of fellow congregant Lee Rotter, who is currently a reservist in the IDF. You will be given the opportunity to write a note to be put into the Western Wall at the Kotel.

Register at [tbeoca.org/Israel-shabbat](https://tbeoca.org/Israel-shabbat)

### DINNER

#### Members

Adults: **\$20**  
Children ages 4 – 12: **\$15**  
Children ages 3  
and under: **Free**

#### Guests

Adults: **\$25**  
Children ages 4 – 12: **\$20**  
Children ages 3  
and under: **Free**

Prices increase \$5 on May 4.  
Registration closes at 12:00pm on May 13

As we come together to celebrate Blue Jeans/Blue & White Shabbat, please bring **NEW** children's jeans sizes 4-16 to donate to The Giving Tree Clothing Closet. Used or adult clothing will not be accepted.  
See page 21



Generously  
Sponsored by  
Brotherhood  
and Sisterhood

# SHABBAT

## MAY AND JUNE

**MAY 3**

### **Confirmation & Graduation Shabbat at Six**

🕒 6:00pm

📍 **Schaefer Family Campus**

This evening we honor our Confirmation Class and graduating high school seniors at our celebration of Shabbat.

### **Ice Cream Tot Shabbat**

🕒 6:00pm

📍 **Beck Family Campus**

Here's the "scoop" on the last Tot Shabbat of the school year. Join us for a tasty pizza dinner, followed by a family-friendly Shabbat Service with our clergy. Afterward, stay for our Oneg complete with yummy ice cream treats and toppings.

**MAY 4**

### **Shabbat Morning Minyan**

🕒 10:45am

📍 **Schaefer Family Campus**

**MAY 10**

### **Remembering the Shoah**

🕒 7:30pm

📍 **Schaefer Family Campus**

This Shabbat we commemorate Yom HaShoah, Holocaust Remembrance Day with holocaust survivor, Rosette Goldstein.

**MAY 17**

### **Blue Jeans Shabbat at Six**

🕒 6:00pm

📍 **Schaefer Family Campus**

Join us as we celebrate Yom HaAtzmaut, Israel Independence Day. Break out your blue jeans and wear blue and white to show your support for Israel. If you have a friend or family member who is in the IDF, we invite you to join us this Shabbat for prayers for their healing and safety. We will also be hearing an update on the front lines from Noam Goldberg, the brother of fellow congregant Lee Rotter, who is currently a reservist in the IDF.

**See page 15 for more information.**

**MAY 24**

### **Kol HaNeshama with Volunteer Recognition**

🕒 6:00pm

📍 **Beck Family Campus**

Welcome Shabbat with a peaceful mind and an open heart at our service in the round. Through the use of niggunim (wordless melodies) and inspiring words, we will deepen our connection to ourselves, to each other and the Holy One.

### **Volunteer Recognition Shabbat**

🕒 7:30pm

📍 **Schaefer Family Campus**

This Shabbat we honor the contribution of our volunteers with a special blessing at this joyous service where we celebrate our community. We will also offer blessings for our congregants who are celebrating a birthday in the month of May.

**MAY 31**

### **Shabbat Service Honoring our Current Board**

🕒 7:30pm

📍 **Schaefer Family Campus**

This Shabbat we honor Temple's officers and Board of Trustees for their remarkable wisdom and service to our congregation.





**JUNE 1**

**Shabbat Morning Minyan**

🕒 10:45am

📍 Schaefer Family Campus

**JUNE 7**

**Welcome Rabbi Laila Haas  
Shabbat at Six**

🕒 6:00pm

📍 Schaefer Family Campus

This Shabbat we meet Rabbi Laila Haas and look forward to welcoming her into our congregation.

**JUNE 14**

**Naso – Shabbat of Blessings**

🕒 7:30pm

📍 Schaefer Family Campus

The priestly benediction in this week's portion is one of the most powerful statements of blessing in the Torah. This Shabbat we will focus on what it means to be blessed, what it means to bless another, and what it means to be a blessing. We will offer a special blessing to our members who are celebrating a birthday in June.

**JUNE 21**

**Splish-Splash Tot Shabbat**

🕒 6:00pm

📍 Beck Family Campus

Bring your swimsuits for a super exciting and wet Tot Shabbat! Join us for a pizza dinner at 6 pm, followed by a family friendly Shabbat service in the Kehillah Center. Then, it's time to head out to the Big Backyard for splish-splash fun on the splash pad and bounce house water slides!

**Shabbat Beha'alotcha:  
Juneteenth**

🕒 7:30pm

📍 Schaefer Family Campus

In the years since the Civil Rights Movement, many have dreamed of creating a "colorblind" society. But some say it is only through focusing on the challenges of race and racism that we can achieve a truly equitable society. Our service will reflect on how Judaism guides us in reflecting on race, equity, and equality.

**JUNE 28**

**Sh'lach L'cha: Pride Shabbat**

🕒 7:30pm

📍 Schaefer Family Campus

June 28 is the 55th anniversary of the Stonewall Uprising, a watershed moment in the fight for LGBTQ+ rights in the United States. On this Shabbat, as we also read in the Torah the story of the Spies exploring the Land of Israel, we will reflect on the message of imagining a better future.



COME **Together** *Celebrate our Volunteers for a Shabbat Service and Blessing during Shabbat on Friday, May 24*

**FRIDAY, MAY 24**

**Shabbat Evening Service | 7:30pm  
Schaefer Family Campus**

**Kol HaNeshama | 6:00pm  
Beck Family Campus**

Have you volunteered this year? It truly takes a village. Hundreds of our members have shared their time and skills, from committee work, to Chaverim Team calls, to volunteering as leaders of Chavurot, Circles and more. We will honor and thank all of our volunteers during both Shabbat Evening Services.

Stop by the "Thank you" table at the Oneg as we have a gift to say THANK YOU to you!



# New Each Day – Omer Edition!

**A  
TRANSFORMATIVE  
SPIRITUAL  
PRACTICE**

The Omer is the 49-day period between the celebration of Passover and the Festival of Shavuot. Beginning when the Holy One brought us out of Egypt, it became tradition to count the 49 days from Passover to Shavuot. Each day within the seven weeks marks a step in our journey to Mount Sinai, when we received the gift of Torah.

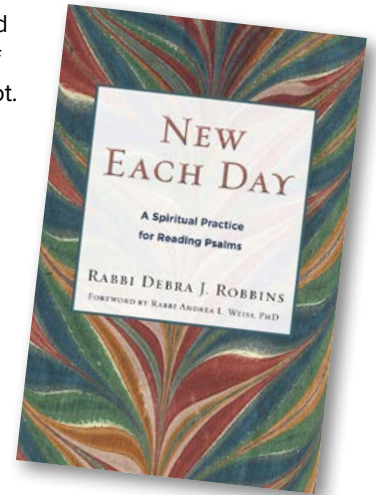
This year, Temple Beth El will mark the counting of the Omer through the wisdom of Rabbi Debra Robbins' book *New Each Day*. In her book, Rabbi Robbins teaches a unique, five-step way to meditate on the daily psalms.

We invite you to join us on this transformative journey, "from the sea to Sinai." Look out for weekly emails from us during The Omer with guidelines from Rabbi Robbins' book to help you meditate and



reflect, as well as an episode of the *Essential Questions Podcast* with Rabbi Robbins as a guest.

The practice will be enhanced with Rabbi Robbins' book. It can be purchased by scanning the QR code below or visiting [tbeboca.org/omer](http://tbeboca.org/omer).



## Rosh Chodesh Women's Group

NEW DATE

**Saturday, May 18 | 7:30-9:00pm**

**Liumi West**

**Havdalah followed by wine, fruit and dessert**

*Cultivating Meaningful Work: Letting Go of Self-Doubt and "Supposed To"*

**Sunday, June 2 | 9:15 - 10:45am**

**Liumi West**

**Coffee and light refreshments**

*Cultivating Laughter, Song, and Dance: Letting Go of Being Cool and "Always in Control"*

Take a little time to focus on yourself, to breathe and to bond with other incredible women in our community. Register at

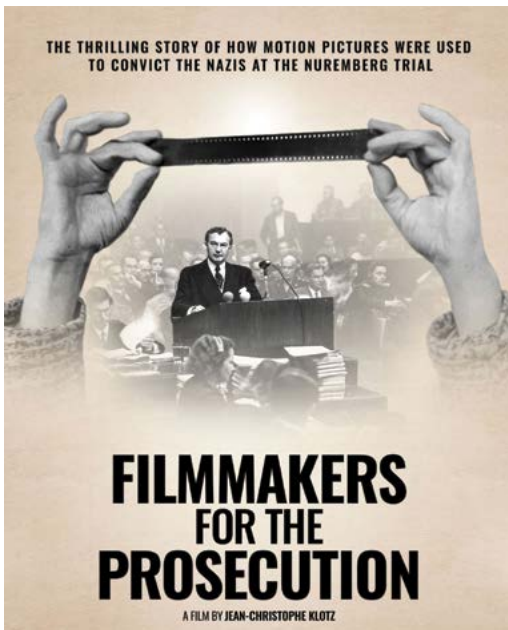
[tbeboca.org/rosh-chodesh](http://tbeboca.org/rosh-chodesh)







# FILMMAKERS FOR THE PROSECUTION



**A FILM ABOUT THE THRILLING STORY OF HOW MOTION PICTURES WERE USED TO CONVICT THE NAZIS AT THE NUREMBERG TRIAL**

**Along with guest speaker Eli Rosenbaum  
Department of Justice Investigator**

**THURSDAY, MAY 2, 2024 | 7:00pm**

**Schaefer Family Campus**

**FREE FOR ALL, registration is required at [tbeoca.org/nuremberg-film](https://tbeoca.org/nuremberg-film)**

Priority seating will be given to members of Friends of Music and the Arts, and members of the Nuremberg Lawyer's Luncheon Committee

Join us for a screening of *Filmmakers for the Prosecution*, a documentary filled with previously unknown information on how the first Nuremberg trial was constructed using film and photographic documentation shot by the Nazis themselves. Follow the amazing story of the Schulberg brothers, Stuart and his older brother Budd, who were tasked by the Allies to gather video and photographic evidence, the first time that video evidence was ever introduced at trial.



**About Eli Rosenbaum**

*Eli Rosenbaum retired earlier this year after a 38-year career at the United States Department of Justice, where he led the investigation and prosecution of a broad range of human rights violators, from World War II Nazi criminals to Rwandan genocidaires and beyond. Under his leadership as Director of the Justice Department's former Office of Special Investigations (OSI) from 1995 to 2010, his office won more cases against Nazi criminals than did the governments of the rest of the countries of the world combined.*

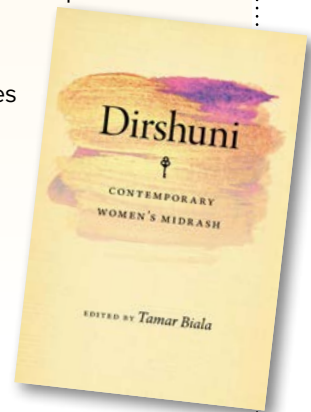
# Lunch & Learn

**DIRSHUNI – MIDRASH FROM WOMEN'S VOICES  
RABBI GREG WEISMAN**

**Tuesdays, May 7, 14, 21, 28  
12:00 – 1:00pm**

**Schaefer Family Campus and Zoom**

The voices of our Biblical patriarchs are well recorded in the Torah. *Dirshuni: Contemporary Women's Midrash* is an extraordinary, contemporary collection of Torah midrashim composed by Israeli women. Using the classical forms developed by the ancient rabbis, this religiously and politically diverse group of writer contributors express their religious and moral thoughts and experiences through innovative interpretations of scripture.



*There is no Lunch and Learn in June.*



# Understanding Dementia



## NEW IDEAS FOR PREVENTION AND TREATMENT WITH DR. JAMES GALVIN

May 9, 2024 | 7:00pm | Schaefer Family Campus

Take the opportunity this evening to learn about cutting edge science around dementia and brain health with one of the foremost experts in the field. Register at [tbeboca.org/dementia](https://tbeboca.org/dementia)

*James E. Galvin, M.D., M.P.H. is Professor of Neurology and Psychiatry & Behavioral Sciences at the University of Miami Miller School of Medicine. He is Division Chief for Cognitive Neurology, Founding Director of the Comprehensive Center for Brain Health, and Director and Principal Investigator of the Lewy Body Dementia Research Center of Excellence. Dr. Galvin has authored over 325 scientific publications and 3 textbooks on healthy brain aging, cognitive health, Alzheimer's disease, Lewy Body dementia, and related disorders. Dr. Galvin is principal investigator on 9 active NIH grants and has received over \$100 Million in research funding from the National Institutes of Health, Disease Associations, Private and Family Foundations.*

# A TASTE OF Judaism

## 3-SESSION PROGRAM TAUGHT BY TEMPLE BETH EL CLERGY

Wednesdays, May 22, 29 and June 5, 2024

7:00pm

In-person at the Schaefer Family Campus and on Zoom

FREE. Registration required at [tbeboca.org/taste-of-judaism](https://tbeboca.org/taste-of-judaism)

Join Temple Beth El's rabbis for A Taste of Judaism®. This 3-session free program is all about showing people what is delicious about Judaism, our faith, our customs and our community. Designed for "beginners" from any religious background, no previous knowledge of Judaism is required. Interfaith couples, in-laws of Jews, unaffiliated Jews, individuals exploring conversion, and anyone seeking more knowledge about Judaism will find this course a good beginning. Please spread the word to friends and family members who may be interested!

Contact Rabbi Greg Weisman at [gweisman@tbeboca.org](mailto:gweisman@tbeboca.org) with any questions.





# Amendment 4 is on the ballot this November thanks to a successful petition drive this past year!

*“Jewish tradition is very clear that if carrying a fetus threatens the health of the mother, then it is our obligation to terminate that pregnancy to save the mother’s life. And that threat is not necessarily limited to the physical health of the mother but also concerns her mental health.”*

— Rabbi Dan Levin



As a result of a statewide coalition that included Temple Beth El and RAC-Florida (Religious Action Center/Social Justice Arm of the Union for Reform Judaism), Amendment 4 which seeks to enshrine reproductive freedom in the Florida constitution is on the ballot this November. Temple Beth El alone collected 6675 petitions to help make this happen! **NEXT STEP:** check your vote by mail status, make sure you are registered to vote and help encourage voters to VOTE on November 5th.

## Israel Solidarity

Show your solidarity with our brothers and sisters in Israel. Stop by the Israel table at the Schaefer Family Campus to write a postcard encouraging our elected officials to continue their support of Israel. Visit [tbeboca.org/Israel](http://tbeboca.org/Israel) to learn how you can get involved.



## Giving Tree Blue Jean Collection

**Friday, May 17, 2024 at Blue Jeans & Blue and White Shabbat Schaefer Family Campus**

Support the Giving Tree by bringing NEW children’s jeans, sizes 4-16 when we come together to celebrate Yom Ha’Atzmaut and our Blue Jean Shabbat. These items will be used to stock The Giving Tree’s Clothing Closet, which receives daily requests from local social services organizations. Also acceptable for donation are shorts and long pants. **Please do not bring in any used or adult clothing;** they will not be accepted.

Questions? Contact [thegivingtreeboca@gmail.com](mailto:thegivingtreeboca@gmail.com)



# Navigating a Changing World



**HEATHER EREZ**  
DIRECTOR OF YOUTH  
EDUCATION AND  
ENGAGEMENT  
herez@tbeoca.org

Heirlooms, stories, and recipes are all things we pass down to our children and grandchildren. Additionally, Jewish traditions, which are steeped in values and priceless meaningful celebrations and ceremonies travel L'Dor VaDor, from generation to generation. Creating Jewish pride and an overall commitment and belonging to Klal Yisrael, the Jewish people, is not something to be transferred from parent to child alone, it is with the help of a community that this is achieved.

We are seeing a shift in the world around us with antisemitism and anti-Israel sentiments being slung left and right, from our university classrooms to our airports and even from some of our elected officials. Our students need affirmation, now more than ever, of the beauty of our religion and culture, as well as explanations of where this deep seeded hate stems. They need to feel safe and open to be

their true authentic selves and Temple Beth El is at least one place outside of their homes they can be.

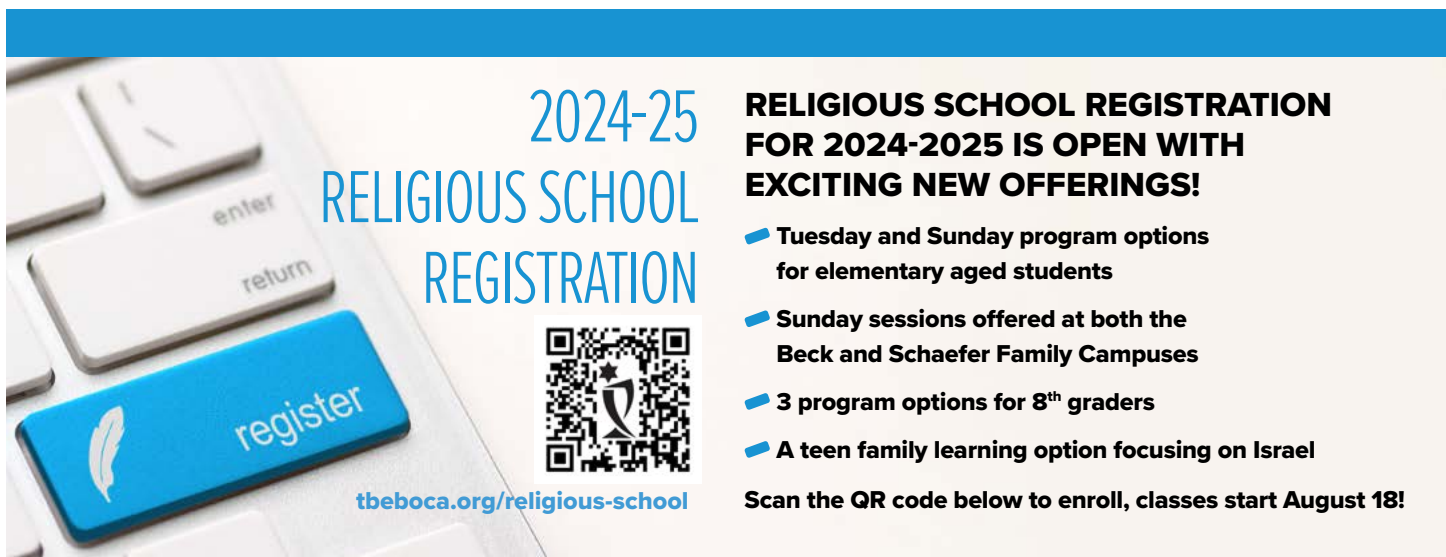
The full-time education staff and the faculty of the Religious School continue to learn the most up to date and effective ways to help navigate the changing world for our students. We are prepared with developmentally appropriate lesson plans and conversation guides to best instill Jewish pride and knowledge as well as

*This past year, more than ever, Temple Beth El parents have reached out for advice on how to talk to their children and guide them through tough conversations and feelings.*



hold the value “love thy neighbor” close to their hearts. This past year, more than ever, Temple Beth El parents have reached out for advice on how to talk to their children and guide them through tough conversations and feelings. Our team will continue to be present as a resource and support to our families and students and we welcome all conversations with open arms.

Enrolling your children, as early as possible, is a great place to start. If you have any concerns or questions about Religious School registration, please reach out to any member of our team.



**2024-25**  
**RELIGIOUS SCHOOL**  
**REGISTRATION**

[tbeoca.org/religious-school](https://tbeoca.org/religious-school)

**RELIGIOUS SCHOOL REGISTRATION FOR 2024-2025 IS OPEN WITH EXCITING NEW OFFERINGS!**

- Tuesday and Sunday program options for elementary aged students
- Sunday sessions offered at both the Beck and Schaefer Family Campuses
- 3 program options for 8<sup>th</sup> graders
- A teen family learning option focusing on Israel

**Scan the QR code below to enroll, classes start August 18!**





# Counselor in Training Program Summer 2024

Volunteer and become a CIT at the Early Learning Centers Summer Adventure Camp. This program is open to any temple member teen that will be in grades 8-12 for upcoming school year. Teens can average around 80 hours a session, and looks great on a resume. Flexible sessions and time schedule to choose from. To learn more and apply, go to [tbeboca.org/cit24](https://tbeboca.org/cit24)




**Counselor in Training Program**

For those entering Grades 8-12

**Summer 2024**

[tbeboca.org/cit24](https://tbeboca.org/cit24)

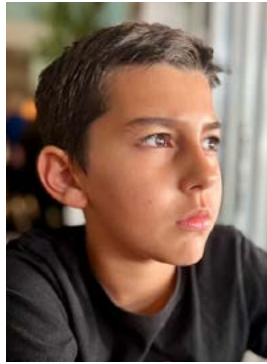
**Beth El TEENS**



# B'nai Mitzvah



Milo Richards



Ari Jacob Perez



Samuel Wasch



Britney Andrews



Charlie Fina



Sloane Silverstein



Blake Squires

Milo Richards  
Son of Samantha and Marc Richards  
May 4, 2024 @ 9:00am

Ari Jacob Perez  
Son of Sandy Visser Perez and Daniel Perez  
May 4, 2024 @ 11:30am

Samuel Wasch  
Son of Rachel and Adam Wasch  
May 11, 2024 @ 11:30am

Britney Andrews  
Daughter of Elana and David Andrews  
May 11, 2024 @ 6:00 pm

Charlie Fina  
Daughter of Steven and Elizabeth Fina  
May 25, 2024 @ 9:00am

Sloane Silverstein  
Daughter of Tracey Stokes and Ari Silverstein  
May 25, 2024 at 11:30am

Blake Squires  
Son of Dara and Adam Squires  
May 25, 2024 @ 5:30pm

Victoria Blauberg  
Daughter of Matthew and Lara Sakolove  
June 1, 2024 @ 9:00am

Jacob Mullen  
Son of Ayelet and Ed Mullen  
June 1, 2024 @ 11:30am

Jacob Geringer  
Son of Marjorie & Jason Geringer  
June 8, 2024 @ 9:00am

Joshua Mishkin  
Son of Karina and Jerry Mishkin  
June 8, 2024 @ 11:30am

Andrew Goldson  
Son of Michelle z"l and Daniel Goldson  
June 15, 2024 @ 9:00am

Lauren Jacobs  
Daughter of Michael and Alissa Jacobs  
June 15, 2024 @ 11:30am



Victoria Blauberg



Jacob Mullen



Jacob Geringer



Joshua Mishkin



Andrew Goldson



Lauren Jacobs

*z"l, of blessed memory*



THE 2024  
CONFIRMATION CLASS  
OF TEMPLE BETH EL  
INVITES YOU TO SHARE IN ITS

# *Confirmation Service*

SUNDAY, MAY 5 AT 1:30 PM  
SCHAEFER FAMILY CAMPUS

ZACHARY ANDREWS  
MOLLY BERGNER  
SYDNEY BUTLER  
ELIANA COHEN  
RYLIE COHEN  
BARI EDELBERG  
SEAN GOLDSMITH  
ASHER GROSSMAN

NATHANIEL KEHRBERG  
LILY KUPFERMAN  
JOSHUA LERNER  
MAXWELL MCDUGALL  
JACK RUBINSTEIN  
BLAKE SLINTAK  
HARRISON SWARTZ  
HANNAH TEKEL

CONGRATULATIONS TO OUR  
*Graduating Seniors*  
CLASS OF 2024!

**Join us on May 3 at 6:00pm at the Schaefer Family Campus**

for Confirmation & Graduation Shabbat. This evening we will honor our Confirmation Class and graduating high school seniors at our celebration of Shabbat.



# The Milestones of Growth



BY **RONNI GRAF**  
BETH EL EARLY  
LEARNING CENTER  
DIRECTOR  
rgraf@tbeboca.org

This spring at the Beth El Early Learning Center, we have the profound pleasure of celebrating two very significant milestones...our PreK students' graduation and hatching chicks as part of our egg incubation experiment. While these events may seem worlds apart, they do share profound similarities that illuminate the journey of growth, transition, and new beginnings.

Just as a chick begins its life nestled within the confines of its egg, young children embark on their educational

*Just as a chick begins its life nestled within the confines of its egg, young children embark on their educational journey, some at our school from infancy, within the nurturing environment of our early learning center.*

journey, some at our school from infancy, within the nurturing environment of our early learning center. In both cases this initial stage is a period of incubation, where growth occurs quietly, but steadily, guided by the warmth and care of our teachers.

As the moment of hatching approaches, there's a palpable sense of anticipation. Similarly, in PreK classrooms, as the end of the school year draws near, there's a buzz of excitement as children, parents and teachers await the end of their time together.

When the chicks finally emerge from their shells, it's a moment of celebration...A testament to the miracle of life and culmination of weeks of growth and development. Likewise, the PreK

moving up ceremony serves as a celebration of the children's achievements, milestones, and growth throughout their time with us. In both contexts, the role of nurturing environments cannot be overstated. Just as the incubator provides warmth and protection for the eggs, our teachers and staff provide a supportive and enriching environment for young children, nurturing their curiosity, creativity and



## Shade Structure Dedication



**Friday, June 21, 2024 | 7:00pm**  
**Beck Family Campus**

Celebrate the dedication of our brand new shade structure in the Big Backyard at the Beck Family Campus, made possible by the generous support of the "We've Got You Covered" campaign.

Following Splish Splash Shabbat, gather with Clergy, Temple Beth El Brotherhood leadership and members of the Board of Trustees for this meaningful dedication just in time for the warmer weather.

potential.

Just as chicks take their first tentative steps into the world, our PreK graduates take their first steps towards the next phase of their educational and Jewish journeys. Both represent a new beginning, filled with opportunities for learning, exploration, and growth. It is our sincere hope that we will be afforded the opportunity to continue to watch our students grow and thrive in our Religious School and around Temple Beth El long after their PreK year ends.

*Mazel Tov to Our Graduates and Our Chicks!*





## Important Dates

Monday – Friday, May 6-10 – Staff Appreciation Week  
 Monday, May 13 – Woman in My Life – 3 years old classes – 10:00am  
 Tuesday, May 14 – Woman in My Life – 4 years old classes – 10:00am  
 Wednesday, May 15 – Woman in My Life – 2 years old classes – 10:00am  
 Thursday, May 16 – PreK Graduation Rehearsals – 9:15am  
 Thursday, May 16 – Woman in My Life – Childcare classes – 4:00pm  
 Sunday, May 19 – PreK Graduation – 1:00pm  
 Wednesday, May 22 – Grad Day  
 Thursday, May 23 – ELC Last Day of School for Early Childhood  
 Monday, May 27 – Memorial Day – Early Learning Center Closed  
 Friday, May 31 – Summer Adventure Camp – Camper Visiting Day  
 Monday, June 3 – Summer Adventure Camp Begins

## Tot Shabbat

Friday, May 3 – Ice Cream Tot Shabbat – 6:30pm  
 Friday, June 21 – Splish Splash Tot Shabbat – 6:30pm

## Parenthood

Saturday, May 11 – Parents' Night Out in the Big Backyard – 7:00pm  
 Wednesday, May 15 – Parenthood Meeting – 7:30pm

EARLY LEARNING CENTER

# Graduation 2024

SUNDAY, MAY 19

### Pre-K Graduation

#### Fabulous Foodies, Rainbow Fish and Shining Stars

1:00pm in the Rabbi Merle E. Singer Sanctuary  
 at the Schaefer Family Campus  
 followed by a reception in the Social Hall

#### Mighty Manatees and Proud Pandas

1:20pm in the Chapel at the Schaefer Family Campus  
 followed by a reception in the Social Hall

All ceremonies will be livestreamed at [tbeboca.org/live](https://tbeboca.org/live)





## SISTERHOOD UPDATE



BY **LISA WOLFE SWARTZ** AND  
**SUSAN JUSTER GOLDSTEIN**  
SISTERHOOD CO-PRESIDENTS  
sisterhood@tbeoca.org

There is always something new and exciting brewing in TBE Sisterhood! We're coming to the end of our budget year, and now is the time when new people join our Board and we say thank you to those Board members who are not returning in a leadership role. We have accomplished so much this year and have so much to celebrate: Challah making, our annual Luncheon Fundraiser featuring the Battle of the Bakers, latke and honey sales, the always hilarious Bingorita, Sisterhood Shabbat, and so much more. So, here is a heartfelt *thank you* to these women who have helped in their capacities for the past three years, some of whom have been helping for many years!

- Co-Presidents: **Lisa Swartz and Susan Goldstein**
- Treasurer: **Lisa Zwick**
- Vice Presidents of Membership: **Carol Niren and Randi Jaro**
- Co-Chairs, College Outreach: **Sherry Lerner and LisaJane Romer**
- Vice President of Communication and Technology: **Alexandra Paralouk-Bergbauer**
- Corresponding Secretary: **Debi Jackman**
- Recording Secretary: **Ellen Gottsegen**

And important non-Board positions, such as

- Manager, Gift Shop: **Clarice Goldstein**
- Chair, Bereavement Dinners: **Shelley Marcus**
- 2023-2024 Luncheon Co-Chairs: **Lisa Zwick and Karen Press**
- Chair, Bingorita: **Carol Niren**

Now that all the women of Temple Beth El are also members of Sisterhood, we look forward to many new people getting involved. You can chair an event, hold a leadership role on the Sisterhood Board, help work on an event, or just attend events! Not everyone wants to be a Queen Bee! Some of us want to be busy worker bees. There is a place for everyone in Temple Beth El Sisterhood. Please come and join us.



Sisterhood Bingorita



# BROTHERHOOD UPDATE



BY **JON LEVIN**  
AND **JOE GUDEMA**  
BROTHERHOOD  
CO-PRESIDENTS  
[brotherhood@tbeboca.org](mailto:brotherhood@tbeboca.org)

As we finish up the temple year in June, Brotherhood is proud of what we've accomplished this past year and what we have in store in the future.

We had a strong start to the year with our signature Golf Outing in January, where we raised over \$30,000 towards helping to secure our temple. In February, we held our second annual softball game against the BOFTY teens, with participation across generations.

March saw our outing to a spring training game with over 50 attendees in a private roof deck. We resumed our Men's Seder in April, with a thought-provoking talk on antisemitism from a local professor.

Looking at May and June, we have our annual Mother's Day brunch, with over 75 attendees each of the past two years. In June, we will have our year-end meeting where we will elect a new leadership slate and plan programming for 2024-2025. We encourage anyone interested in getting involved to come to a monthly board meeting or the June meeting to share your ideas and be a part of an energetic and eclectic auxiliary group.

Brotherhood is excited to once again host

our always popular Mother's Day Brunch. Come join us for great food, music & family time to celebrate the most important lady in our lives!! It is the best deal in town and it will sell out so don't wait to register.



**Mother's Day Brunch**  
**Sunday, May 12, 2024 | 11:00am**  
**Schaefer Family Campus**

\$36/adults and young adults 13 and older  
 \$18/children 3-12; 2 and under: Free  
 Prices increase by \$5 after April 30.



Brotherhood/BOFTY Softball Game



Spring Training Outing



**PLATINUM RECORD**

Patty Beck & Martin Rubenstein  
Richard & Diane Templer

**GOLD RECORD**

Dana Brown & family  
Freyda & Ed Burns  
Interiors by Brown  
Rita Judson  
Marla Schaefer & Steven Weishoff  
Marilyn & Jay Weinberg

**SILVER RECORD**

Jonathan Grayer & Dawn Miller  
Barbara & Leonard Tamchin

**PRODUCER**

David Brown & Suzanne Muchin and family  
Patti Goldberger & Gregg Gorelick  
Sam & Simone Spiegel

**DIRECTOR**

Cantor Lori & George Brock  
Madeline & Wes Finch  
Karen & Steven Holzman  
Linda & Robert Schmier  
Edith Stein  
Ilyne Mendelson & Steve Terk  
Jill Viner  
Wendy & Steve Walin  
Shirley Weisman

**ARTIST**

Marlene & Richard Bluestein  
Emily & Richard Cohen  
Nancy & Dennis Gilbert  
Richard & Susan Goldstein  
Meredith & Marc Hirsh,  
The Hirsh Center for Arthritis  
and Sports Medicine  
Jan & Allen Lev  
Aimee & Rabbi Dan Levin  
Shelley & Larry Marcus  
Marsh McLennan Agency  
Pam Nadler & Mark Sickles and family  
Judy & Gary Nath  
PGAL Architects  
Susan & Barry Podolsky  
Myrna & Norman Ricken  
Sandy & Tadd Schwab  
Elaine & Sherwood Sharfe  
Mason Slaine & Daniele Schachter  
SMILES by Dr. R  
Scott Solomon & Jody Hurlock  
Dr. Andrea Corn & Mr. Bob Sugarman  
Christy McElhaney & Mark Sunshine  
Susan & Jaime Weiss  
Barbara Silver & Steven Willner

*- As of March 29, 2024*





# THE BETH EL BASH





# THE BETH EL BASH





# Our Congregation Mourns

Donna Barnett\*, beloved member

Mitchell Berg\*, husband of Randi Berg

Susan Bierman, mother of Lisa and Jonathan Franklin, grandmother of Joshua Franklin and Claire Epailard and Casey Franklin and Gustavo Riberio

Ronald Bricker, father of Eric and Jaime Bricker, grandfather of Sam Bricker

Richard Brock, father of George and Cantor Lori Brock

Dr. Marc Cooper\*, husband of Cheryl Cooper, father of Marissa Cooper and Shawn Warmstein

Barry Fuller, father of Amy and James Kuntz, grandfather of Elizabeth and Lexi Kuntz

Ethel Ginsburg, grandmother of Beth and Michael Nemeroff, great-grandmother of Corey and Jake Nemeroff

Sandra Gottlieb, mother of Randi Gellibert, grandmother of Louis and Lily Gellibert

Mark Haberman\*, husband of Joan Haberman

Lynn Holzman\*, wife of Steve Holzman

Ruth Jacobson, beloved member

Eliezer Levy, grandfather of Ron and Sam Barhai, great-grandfather of Corey and Cooper Barhai

Ellie Lifton\*, wife of Marty Lifton

Marlene (Judy, Yu Yu) Lowenthal, beloved member

John McMath, stepfather of Cindy Pellach, step-grandfather of Amanda and Logan Pellach

Hyman Miller\*, husband of Marcia Miller

Shelley Rosenblum-Goodreau, sister of Joel and Helayne Rosenblum, aunt of Jerilyn and Adam Grunbaum, great-aunt of Jacob Grunbaum

Norma G. Rosenfeld, aunt of Debi and Herb Jackman

David Schwartz, father of Barry and Sandi Schwartz, grandfather of Alec and Alana Schwartz

Brett Simon Shapiro, father of Hayden and Isabelle Shapiro

Len Sirowitz, father of Mike Sirowitz, grandfather of Jacob (Yasha) Sirowitz

Peter J. Sosin, son of Susan and Mark z"l Sosin, father of Joseph and Jacob Sosin

Richard Steinberg, father of Michael Steinberg and Jennifer Yuil-Steinberg, grandfather of Edward and Chloe Yuil-Steinberg

*\*Laid to rest in the Beth El Mausoleum*

# Mazel Tov To

Alissa Silverstein and Niall Caheny on the birth of their son, Aidan James Caheny, big sister Maeve

Sara and Michael Haviv on the birth of their daughter, Adela Noa Haviv, big sister Liana

Olivia Olf and Derek Hurwitch on the birth of their daughter, Avery Rose Hurwitch

Heidi and Bruce Lein on the birth of their granddaughter Lainey Harper Pepper

Lisa and Kenny Rosenthal on the birth of their granddaughter, Adeline Yetta Rosenthal

Lisa and Kenny Rosenthal on the birth of their grandson, Oliver Edward Rosenthal

Melissa and Korey Saifman on the birth of their son, Jack Barrett Saifman, big sister Isla

Nancy Spielman on the birth of her granddaughter, Bebe Love Beckerman

Lauren and Matthew Spitz on the birth of their daughter, Rory Lior Spitz, big sister Elianna

Amy and Dallas Wait on the birth of their son, Adam Wilder Wait, big sister Summer

Ilene and Peter Wohlgemuth on the birth of their grandson, Bryce Jesse Cooper

Laura Barry and Mark Scheer on their marriage

Nancy Colman on the marriage of her son Andrew Colman to Hannah Wendell

Ellen and Steve Gottsegen on the marriage of their son Chad Gottsegen to Carly Fisher

Brandon Luskin on the marriage of his daughter Jaclyn Luskin to Brent Weiss

Jennifer Tompkins and Harris Kirschner on their marriage

# Donations & Dedications

as of January 16 – March 15, 2024

---

## Annual Giving

Marilyn & Robert Dragin  
Howard Guggenheim  
Wilma & Jim Kaufman  
Lauren & Adam Schwartz  
Fran Weinberg

---

## Amy S. Klein Shapiro Memorial Educational Fund

### *in memory of:*

Amy S. Klein Shapiro by Penny & David Klein

---

## Anna Beitscher Memorial Scholarship Endowment Fund

### *in honor of:*

Aline Fisher for her skill as a docent of Temple  
Beth El's art by Jim Brachman

### *in memory of:*

Winston Grant by Jim Brachman

---

## Early Learning Center Scholarship Contribution

Jewish Federation of South Palm Beach County

---

## Gelfand/Arpe Young Childrens Innovative Education Fund

### *in memory of:*

Lucy Wohlsifer by Michael Gelfand and Mary Arpe  
Ruth Jacobson by Michael Gelfand  
Pam Parker Chilson by Michael Gelfand  
Marian Gault by Michael Gelfand  
Peter Sosin by Michael Gelfand  
Marian Gault by Michael Gelfand  
Rolando Sanchez-Medina by Michael Gelfand

---

## General Fund

Mike Sirowitz

### *in celebration of:*

Cantor Jake upon becoming a Cantor! Mazel Tov  
by Rebecca Elman & Andrew Levy

### *in honor of:*

Neal Slafsky by Deborah and Steven Melzer  
Melvin Lazar's special birthday by  
Marian & Marvin Gruber

### *in memory of:*

Irma Marcus by Larry & Shelley Marcus  
Bobbi Bernheim by Alan Weill  
Carole Siemens by Cindy Katz Morton  
& Duncan Morton  
Carole Siemens by Lee & Lane Friedel  
Carole Siemens by Marilyn & David Gotterer  
Carole Siemens by Larry Gotterer  
Carole Siemens by Morgan & Neil Kapneck  
Corky London by Ursula & Lenny Hess  
Edward William Shuman by Ursula & Lenny Hess  
Ellie Lifton by Allan Goldstein  
Ellie Lifton by Barry Lifton

Estelle Simon Teller by Judy Kaye  
Hugo Kuntz by Martin & Sylvia Gentner  
Hugo Kuntz by Judy Rosenwater  
Jacob Nicholas Watford by Brenda Bello  
Michael Schmelzer by Ursula & Lenny Hess  
Peter Sosin by Sue & Steve Feldman  
Peter Sosin by Scott Glincher & Marcia Gerson  
Peter Sosin by Cindy-Jo & Paul Homer  
Peter Sosin by Natalie Pelavin  
Peter Sosin by Jo-Ann Schwartz  
Richard Bernstein's brother by Freyda & Ed Burns  
Richard Brock by Rita Judson

---

## Giving Tree

### *for the Mi Sheberach of:*

George Huntley by Marcia Hoffman

### *in celebration of:*

Suellen and Artie Sussman's anniversary  
celebration by Stephen Jurist  
the birth of Shira Antionette Tucker  
by Jan & Allen Lev

### *in honor of:*

Dr. & Mrs. Maron's new home by  
Elaine & Morton Erenstein  
the Brown Family by Ronna & Marc Taub

### *in memory of:*

Ruth R. Jacobson by Caren Browning  
Joyce Silverman by Elaine & Morton Erenstein  
Gussie Block by Elaine & Morton Erenstein  
Fannie Wolfson Block by Elaine & Morton Erenstein  
Richard Brock by Haith & Company

---

## Linda Snyder Kindergarten & Nursery School Fund

### *in memory of:*

Gloria Faye Mandel by Meryl Cohen

---

## M & M Hoffman/F & M Schwartzfarb Endowment Fund

### *in memory of:*

Peter Sosin by Susan & David Schwartzfarb

---

## M. & M. Plough, Jr. Brotherhood Scholarship Fund

### *in memory of:*

Peter Sosin by Margie & Maurice Plough

---

## Mausoleum Endowment Fund

Aline Fisher

---

## Music Fund

Ellen & Steven Gottsegen

### *in honor of:*

Cantor Lori Brock for the wedding of  
our son Chad to Carly Fisher  
Jake Harris on becoming a Cantor, Mazel  
Tov by Irene & Merrill Epstein

### *in memory of:*

Richard Brock by Freyda & Ed Burns  
Richard Brock by Richard & Emily Cohen  
Richard Brock by Susan & Barry Podolsky

---

## Myra R. Schwartz Cantorial Music Fund

### *in appreciation of:*

Cantor Lori Brock for making mom's service so  
beautiful by the Siemens-Spooner Family

### *in honor of:*

Cantor Lori Brock's birthday by Phyllis Brucker

### *in memory of:*

Gloria Kline by Phyllis Brucker  
Richard Brock by Caren Weinberg & Barry Cohen  
Edward Snyder by Caren Weinberg & Barry Cohen

### *on the occasion of:*

Emily Genn becoming a Bat Mitzvah  
by Stacey & Adam Genn

---

## Rabbi Merle E. Singer Scholarship/ Educational Fund

### *in memory of:*

Brenda Singer by Phyllis Brucker

---

## Rabbis' Discretionary Fund

Stuart & Marjorie Blacker  
Betsy & David Blechman  
Jill & Jonathan Block  
Laurie & Glenn Borden  
Roberta Presser & Alex Bruner  
William Carvajal  
Lois & Dennis Charney  
Sheila & Bob Chestnov  
Richard & Emily Cohen  
Cookie Cook  
Irene & Merrill Epstein  
Kathryn Flesher  
Kathryn Flesher  
Leslie & Bernard Friedman  
Fern Kanter & Scott Gershaw  
Elaine & Herb Gimelstob  
Eric & Steph Ginnis  
Lisa & Adam Glass  
Judi & Richard Goldmann  
Ilene Greenberg  
Sheilah Harrow  
Micki & Steven Hirsch  
Barbara & Russ Johnston  
Jan & Allen Lev  
Sara Imershein & Mark Levine  
Barbara & Jerry Lewin  
Steve & Sandy Livingston  
Brandon Luskin  
Debra & Joshua Marcus  
Rob Nagler  
Carmel & Louis Nayman  
Andrea Raab  
Michael & Allison Remis  
Ellie Roth



# RENE RUIZ COLLECTION

LIFE IS A RUNWAY...

EVENING  
COCKTAIL  
CUSTOM  
MITZVAH SERVICES & PARTY

SPECIAL OCCASION DRESSES  
FOR THE WHOLE FAMILY!

2200 GLADES RD #506  
BOCA RATON, FL 33431  
(561) 931-3065



## *Trusted, Comfortable and Caring Dentistry*



DOUGLAS A. ROLFE, DDS, PA COSMETIC AND FAMILY DENTISTRY

With compassion and integrity, our friendly caring team provides the highest quality dental care near Temple Beth El. Equipped with state of the art dental imaging and an experienced and caring staff, my practice is unconditionally committed to the comfort and satisfaction of my patients.

**ANNOUNCING** *The New Easy Dental X-Ray* allows for taking your check up X-rays **outside** your mouth with incredible comfort and clarity. No more biting, gagging and pinching inside your mouth in most cases! Patients love how easy and comfortable it is.

Choosing a dentist is an important decision, so do the research and then decide. My practice is FIVE star ★★★★★ reviewed on **Yelp\*** and **Google**. Please take a moment to read our reviews. We are currently accepting new patients so please call us today!

D.A. Rolfe, DDS, PA 333 Camino Gardens Boulevard • Boca Raton Florida 33432  
[www.DrRolfe.com](http://www.DrRolfe.com) • Phone: 561.395.4500

*Proudly caring for Temple Beth El families for over 20 years!*

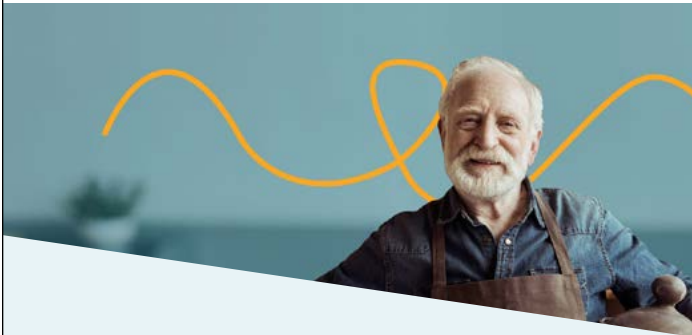


**ADA** American Dental Association®  
America's leading advocate for oral health

**AAO** American Academy  
of Cosmetic Dentistry®



**Thema  
Brain  
Health**



**AGING IS INEVITABLE.  
COGNITIVE DECLINE IS NOT.**

**DID YOU KNOW THAT 90% OF PEOPLE WITH  
MILD COGNITIVE IMPAIRMENT GO UNDIAGNOSED?**

**Thema Brain Health.  
Assess. Prevent. Treat.**

## WHAT TO EXPECT



**Robert Colton, MD**  
Chairman



**Lorin Graef, MD**  
Chief Medical Officer

### OUR PARTNER



**Schedule an appointment  
themabrainhealth.com  
561.918.0003**



# Donations & Dedications

as of January 16 – March 15, 2024

Susan & Jeffrey Rudnick  
Marla Schaefer & Steven Weishoff  
Shari & Craig Schwamm  
Adam & Robin Schwartz  
Madeleine Siegel  
Leonard Sloan  
Carol and Neil Niren  
Ruth Soloway  
Marc & Deborah Straus  
Rachael & Paul Templer  
Jill & Jeffrey Tompkins  
Barbara & David Urban  
Barbara Silver & Steven Willner  
Suellen & Mark Winer

**for the MiSheberach:**

of Allen Lev, wishing you a speedy recovery by Irene & Merrill Epstein

**in appreciation of:**

Rabbi Dan Levin, Cantor Lori Brock and Ms. Barbara Feld and all of their efforts to prepare Meyer for his Bar Mitzvah by Geffen & Michael Altschuler  
Rabbi Dan Levin officiating of the wedding of Andrew and Hannah Colman by Nancy Colman  
Rabbi Greg Weisman by Gladys Cook  
Rabbis Levin, Weisman, and Rabishaw for your support on the loss of my aunt, Norma Rosenfeld by Debi & Herb Jackman  
Rabbi Dan Levin for the special funeral service for Ruth Jacobson by Charles Jacobson and family  
Rabbi Dan Levin, Rabbi Greg Weisman, and Mike Sirowitz for their support and love during the passing of Isaias and Barbara by Steven Kaplun and the Kaplun family  
Rabbi Dan Levin and for supporting Israel in these trying times by Doug Rolfe  
Rabbi Elana Rabishaw during the shiva of Michael Schwartz by Jeffrey Schwartz  
Rabbi Dan for all you do! by Jill & Alan Slootsky  
Rabbi Dan Levin for leading mom's service and always being there for our family by The Siemens-Spooner Family

**in celebration of:**

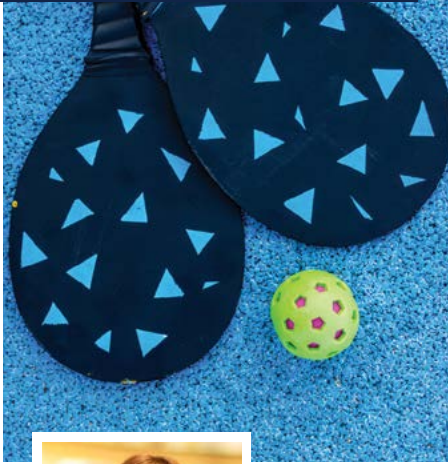
the birth Emma Souza Enfield by Carol & Ted Enfield  
the birth of Jacob Hayes by Scott Glincher & Marcia Gerson  
Jon Channing's 70th B-day by Nancy & Dennis Gilbert  
the naming of Jack and Lorelai McNally by Rabbi Greg Weisman by Karen Kameron  
Abe Lavi's 90th birthday by Bruce & Rosalie Rosen  
the engagement of Zerlina Panush and Dov Stokar by Seymour & Dianne Zager

**in honor of:**

my Bar Mitzvah by Blake Baron and Rachel & Joshua Baron  
Rabbi Levin by Laurie & Glenn Borden  
the hostages by Allison & Bill Heller  
the Clergy of Temple Beth El by Sylvie Heyman  
a great Rabbi, a great friend and a true mensch -Rabbi Dan Levin by Lisa Kaplan  
Bryce Mayer's Bat Mitzvah by Jan & Allen Lev  
our new precious grandson Oliver Edward Rosenthal by Lisa & Ken Rosenthal  
Landon Swartz's Bar Mitzvah by Marla & Jonathan Swartz  
Dr. Jane Skelton by Marilyn & Paul Yentis



Local *expertise*  
with global reach.



*Let's Connect*

**ROSY LOFER**

GLOBAL REAL ESTATE ADVISOR

**786.301.0300**

RLOFER@ONESOTHEBYSREALTY.COM  
ROSYLOFERPA.ONESOTHEBYSREALTY.COM

VISIT MY WEBSITE



Proudly serving your Southeast Florida  
Real Estate Needs and Desires.

EXPERIENCE+KNOWLEDGE=RESULTS

ONE | Sotheby's  
INTERNATIONAL REALTY

© 2024 ONE Sotheby's International Realty. All rights reserved. Sotheby's International Realty® and the Sotheby's International Realty Logo are service marks licensed to Sotheby's International Realty Affiliates LLC and used with permission. ONE Sotheby's International Realty fully supports the principles of the Fair Housing Act and the Equal Opportunity Act. Each franchise is independently owned and operated. Any services or products provided by independently owned and operated franchisees are not provided by, affiliated with or related to Sotheby's International Realty Affiliates LLC nor any of its affiliated companies. The information contained herein is deemed accurate but not guaranteed. Pricing subject to change without notice.

Does your Ob-Gyn value an  
integrated approach to your care?

Tired of not feeling your best?

Want to be as healthy as you can be  
but don't know where to start?

**CALL 561-826-3800**

We answer with individualized  
care for women at all stages of life.

**TERRENCE W. HARRIS, MD**  
WOMEN'S WELLNESS EXPERT



  
**WOMEN'S  
WELLNESS CENTER**

OBSTETRICS | GYNECOLOGY | WELLNESS



**Call 561-826-3800**  
[www.harrisobgyn.com](http://www.harrisobgyn.com)

VISIT [HARRISOBGYN.COM](http://HARRISOBGYN.COM) OR CALL. WE CAN HELP.  
2500 North Military Trail Suite 111 Boca Raton, Florida 33431

# Donations & Dedications

as of January 16 – March 15, 2024

## *in memory of:*

Dr. Marc Cooper by Ann Axelband  
a friends loved one by Bruce & Beth Brier  
Gloria Kline by Phyllis Brucker  
Peter Sosin by Judith Chason  
Ellie Lifton by Andrea & Robert Colton  
Peter Sosin by Barbara Diamond  
Hugo Kuntz by Frances & Sandy Eagon  
Marc Cooper by Carol & Ted Enfield  
Norma Rosenfeld by Irene & Merrill Epstein  
the victims of the October 7th terrorist attack  
by Marni & Michael Feuerman  
Tillie and Ruby Fine, and Edith and William  
Trieber by Edward Trieber & Jo Fine  
Elaine Smith by Marian & Marvin Gruber  
Peter J. Sosin by Brett & Jessica Gubenko  
Howard Ackerman by Norma Heit  
Marilyn Kass by Susan & Alan Jacobs  
Peter Sosin by Jack & Bobbi Kalmanson  
Dr. Marc Cooper by Sandra Kreisberg  
Rebeca Minor by Rhonnie & Sam Leder  
Len Sirowitz by Jan & Allen Lev  
Norma G Rosenfeld by Jan & Allen Lev  
Judy Lowenthal and to thank Rabbi Greg  
Weisman for your comfort and  
guidance by Tania Lowenthal  
Carolyn Luck by Stacey & George Luck  
Dr. Marc Cooper by Lynn & John Marchetto  
Bret Golzbein and Joanne Brust by Tracy  
Rafael & Andrew Mason  
Bill Rudnick by Caryn & Peter Mintz  
Hank and Deanna Katz by Cindy Katz  
Morton & Duncan Morton  
Leon A. Kammerman & Jeffrey  
Schocket by Cary Nation  
Paul Mosbach by Hedy & Yoel Nuriel  
Rachel Pollock Wurman by Ellen & Ed Pollock  
Mathew Romer by Lisajane & Kevin Romer  
Shelley Rosenblum-Goodreau, by Joel and Helayne  
Rosenblum & Jerilyn & Adam Grunbaum  
Benjamin Schuman and Richard  
Barrows by Hynda Schuman  
David Schuman by Hynda Schuman  
Marilyn Kass by Stephanie & Steven Schuster  
Leonard Sheiner by Linda Sheiner  
Joel D. Eaton by Janet & Brian Sherr  
Marc Cooper by Simone & Sam Spiegel  
Len Sirowitz by Amy Stein  
Betty Taub on her *yahrzeit* by  
Rasheena & David Taub  
Len Sirowitz by Ilyne Mendelson & Steve Terk  
Dr. Marc Cooper by Bob & Karen Warmstein  
Steven Weiss by Abbey Weiss

*in support of:*  
Israel by Gary Berg  
Israel by Annie & Bernie Brickel  
Israel by Judith Chason  
Israel by Caren Weinberg & Barry Cohen  
Israel by Beverly Hacker  
Israel by Eileen & Harvey Kamil  
Israel by Joanna & William Karp  
Kehilat YOZMA, Modi'in, Rabbi Nir  
Barkin by Sue & Scott Krieger

Israel by Aviva Miller  
Israel by Mark Sickles & Pam Nadler  
Israel by Natalie Pelavin  
Israel by Susan & Barry Podolsky  
Israel by Laurie & David Putterman  
Israel by Jill & Greg Rispler  
Israel by Adam & Jenny Rothstein  
Israel by Leslie Schwam  
Israel by Mike Sirowitz  
Israel by Mason Slaine  
Israel by Amy & Steve Stein  
Israel by Beverly Stewart  
Israel by Janet & Allan Sussberg  
Israel by Harold & Lois Weber  
Israel by Paul & Jill Weiner  
Israel by Dennis & Linda Weiss  
Israel by Linda & Jeff Yankow

## *on the occasion of:*

Emily Genn's Bat Mitzvah by Stacey & Adam Genn  
Emily Cohen's journey with Rabbi Dan  
to Israel by Paul & Jill Weiner

## *to thank:*

Rabbi Weisman for officiating the funeral of  
Sandra Gottlieb by Randi Gellibert  
Rabbi Dan Levin for officiating our vow  
renewal service by Deb & Joe Gudema  
the Clergy of Beth El by Mark Haberman  
Rabbi Elana Rabishaw for visiting Eliot in  
the hospital by Eliot & Judy Krause

## *with gratitude:*

for Rabbi Dan's mission by Ellen & David Bernstein

## **Religious Activities-Worship Endowment Fund**

### *on the occasion of:*

our Bima Honor by Irene & Merrill Epstein

## **Steve Brown Endowment Fund**

### *in memory of:*

Steve Brown by Orrin & Susan Scheff

## **Tzedakah Fund**

John & Shelley Addleson  
Sandra & Eric Benyamini  
Sidney Bernstein  
Phyllis Brucker  
Cookie Cook  
Larry Hotz  
Barbara McCormick  
Jamie Miller  
Pam Tinkham

### *in honor of:*

Bernie Fritz by Ashley & Tyler Fritz

### *in support of:*

Magen David Adom by Sidney Bernstein

## **We've Got You Covered**

### *in honor of:*

Wendy Walin's birthday by Joan Hoffman

## **Yahrzeit Fund**

### *in memory of:*

Bernice Ellis by Jannette Abejean  
Karen Kelrick by Priscilla & Len Adler  
Gloria Appel by Amy & Eliot Appel  
Andrew Todd Auster by Carolina & Darren Auster  
Irwin J. Auster by Carolina & Darren Auster  
Selma Axelrod by Stephen Axelrod  
Gladys Barron by Barbara & Terry Bachow  
Sylvia Henick by Barbara & Terry Bachow  
Marlene Rosenbaum by David & Lori Bargas  
Bruce Baron by Rachel & Joshua Baron  
Sylvia Baron and Gerald Baron by Mitchell Baron  
Bethann Baskies by Jack Baskies  
Claire Jampolis by Judith Beiner  
Dennis Berg by Marjorie Berg  
Ira Berger and Jeannette Berger by Joseph Berger  
Alfred Nyder by Stan Berkovitz  
Stanley P. Shindell and Rhea Chain Shindell  
by Sindy & Bob Berman  
Martha Bernstein, Samuel Bernstein, Sidney  
Stein by Dorothy Bernstein  
Joy Pollack by Gary & Shelli Bettman  
my twin grandsons David Joseph Viggiano, Jr., and  
Adam Michael Viggiano by Judy Blackman  
Martha Maier by Judy Blackman  
Spencer Blakeslee by Barbara Blakeslee  
Arthur Borden by Laurie & Glenn Borden  
Lila Borden by Laurie & Glenn Borden  
Harry Brier by Bruce & Beth Brier  
Richard Brietstein by Barbara Brietstein  
Mary Catherine Ficara by George Brown  
Walter Brunswick by Murray Brown  
Maurice Bucksbaum by Dorothy Bucksbaum  
Robert Chavis by Jan & Rick Chavis  
Jay Cherry by Linda Cherry  
Hannah Chestnov by Stephanie & Richard Chestnov  
Sigmund Atterman and Hannah Chestnov  
by Sheila & Bob Chestnov  
Bruce Cohen by Rick McArdle & Laurie Cohen  
Eileen Cohen by Alice & Ron Cohen  
Harvey Cohen and Morris Cohen by Susan Cohen  
Frank Phillip Rothstein by Elaine Colker  
Nat Copulsky by Maxine & Joseph Copulsky  
Beverly Bronfman by Richard & Alene Court  
Mack Carlin, Theresa Klein, Max Nudelman, and  
Henrietta Nudelman by Ruth & Ralph Delman  
Ellis Disick by Tia & Grant Disick  
N.G. Kaul by Tia & Grant Disick  
Ellis Disick by Tia & Grant Disick  
Henry Mates by Gwen & Howard Dvorkin  
Eli Egert by Dana Egert  
Phyllis Elman by Eddie Elman  
Isaac Cohen, father of Carol Enfield  
by Carol & Ted Enfield  
Frances Enfield & Paul Enfield by Carol & Ted Enfield  
Ida Herbach by Diane Epstein  
Lena Rosenbaum by Elaine Epstein



# Your Dream Smile Awaits!



- FREE Consultation
- Braces & Invisalign for Children & Adults
- Most Insurances Accepted
- Affordable & Flexible Pricing with 0% Interest Financing
- Morning, Afternoon & Evening Appointments Available

Dr. Brandon L. Zipper  
Board-Certified Orthodontist



**(561) 770-3799**

[www.zipperorthodontics.com](http://www.zipperorthodontics.com)

2901 Clint Moore Rd #6  
Boca Raton, FL 33496



FUNERAL DIRECTORS SINCE 1892

## Gutterman Warheit MEMORIAL CHAPEL

*One of The Largest  
Family Owned & Operated  
Jewish Funeral Homes  
Since 1892*

**Directors:**

**PHILIP GUTTERMAN • STEVEN KANOWITZ  
KENNETH J. LASSMAN**

Leading Pre-Arrangement Specialists for all your Medicaid & Estate Planning Needs.  
In Home Appointments Available

**7240 North Federal Hwy, Boca Raton FL 33487**

**1-800-992-9262**

**Serving Miami-Dade, Broward, Palm Beach & Martin Counties**

*In Greater New York, Guttermans Inc.: ROCKVILLE CENTRE, L.I. 516-764-9400  
WOODBURY, L.I. 516-921-5757 • BROOKLYN 718-284-1500*

**MONUMENTS BY GUTTERMAN'S** [www.guttermansinc.com](http://www.guttermansinc.com)

# Donations & Dedications

as of January 16 – March 15, 2024

## *in memory of:*

Alice Fiebiger Widrow and Paul Fiebiger  
by Sue & Steve Feldman  
Dr. Martin Feuerman by Marni & Michael Feuerman  
Corinne Fiorillo by Andy Fiorillo  
Doris Fish and George Fish by Stephen Fish  
Sol Hornreich by Paula Franklin  
Gertrude Freeman by Kathy Freeman-Costin  
Bernard Hauser by Hollis & Jeffrey Freimark  
William Gottlieb by Adele Friedland  
Jacob Shufro by Leslie & Bernard Friedman  
Claire Garfinkle and Benjamin  
Garfinkle by Rani Garfinkle  
George Gottlieb by Randi Gellibert  
Kenneth Gershon by Barbara Gershon  
Alla Gertsen by Rachel Nebenzahl  
& Michael Gertsen  
Pearl Shapiro by Nancy & Dennis Gilbert  
Ruth Greenberg by Cindy Gitlitz  
Ronald Glanzman by Amy Glanzman  
Adam Goldberg by Amy Glanzman  
Rose Parzen and Helen Goldberg by  
Harry & Ruth Goldberg  
Beth Goldman by Jason Goldman  
Shirley Gamarel by Judi & Richard Goldmann  
David Weissman by Judi Gottlieb  
Bernard Gracin by Hank Gracin  
Sigmund Nachemja by Lloyd & Sylvia Granet  
Rose Tanenblatt by Fran Greenbaum  
Diane Tanenblatt by Fran Greenbaum  
Marvin Ruttenger by Ilene Greenberg  
Donna and Barry Grubman by  
Diana & Jeff Grubman  
David Bossie by Julie Guzy & Terry Cooper  
Arthur William Herlihy by Paula & Hank Harman  
Blossom Cohen by Sheilah Harrow  
Robert Harrow and Joy Harrow  
Zobler by Sheilah Harrow  
Sophia Haspel by Melissa & Arthur Haspel  
Michael Soloman by Carol Himmel  
Sylvia Manoff by Robin Hirsch  
Joyce Honig by Renee & Barry Honig  
Harry Hotz by Larry Hotz  
Florence Jablon by Shari & Howard Jablon  
Morris Jacobs by Diana & Jonathan Jacobs and family  
Sadie Jacobson and Ted Brown by Ruth Jacobson  
David Fishman by Grace & Jack Jaiven  
Harry Jerome by Stephen Jerome  
Michael and Judith Linskey by Charlotte Jonas  
Beverly Smutnak by Rita Judson  
Matilda R. Sokal by Maida & David Kahn  
Mary Kaufman by Karen Kaufman  
Amy S. Klein Shapiro by Penny & David Klein  
Nelson Klein by Leonie Klein  
Arnold Salasky by Aaron Slawsky & Arielle Salasky  
Nat Nast by Paul Knapp & Barbara Saletan  
Ronni Knapp by Paul Knapp & Barbara Saletan  
Carl Koppelman by Selma Koppelman and family  
David Sherman by Selma Koppelman and family  
Maxine Johnstone and Dr. Douglas  
Johnstone by Maxine Kornitzer  
Stuart Krackow by Dorene Krackow  
Faye Rose by Dorene Krackow

Yetta Sherman by Carole & Stuart Krosser  
Oscar Gildenhorn by Lenore Lenkin  
David Klavons by Barbara & Jerry Lewin  
Henry Lewin by Barbara & Jerry Lewin  
Harry Lichtenstein by Sue Lichtenstein  
Estelle Lifton by Martin Lifton  
Irving Morris by Judith Lipsky  
Lydia Kohn by David & Robin Lubetkin  
Celia Grossman by Zeldia Luxenberg  
Carol Magod by Buddy Magod  
Stacy Malman-Feldman by Dorothy  
& Arthur Malman  
Isadore Mandel by Paul Mandel by Diane  
Perkins & Paul Mandel  
Edwin Manning and Florence Goldstein  
by Barbara Manning  
Earl McCoy by Joshua McCoy  
Hilda Novick by Barbara Morris by  
Barbara & Harvey Morris  
Max Morris by Barbara & Harvey Morris  
Steve Brown by Ryan Moss  
Linda Nagler by Rob Nagler  
Corrine Greenberg by Rob Nagler  
Mickey Nusbaum by Sheri Nusbaum  
Harold Savage by Sheri Nusbaum  
Harry Poritz by Esther Poritz-Oknowsky  
Ella Blankstein by Barbara Orville  
Sol Pedvis, Rita Steinberg, Jan Pacht, and  
Len Pedvis by Carole Pedvis  
Dorothy Katz by Natalie Pelavin  
Mary Ann Perper and Harold E.  
Perper by Irwin Pescov  
Barbara Peskin by Arnold Peskin  
Theda Picow by Robert Picow  
Howard Pollack by Ellen Pollack  
Jody Press by Jeffrey Press  
Isaac Putterman Father by Laurie  
& David Putterman  
Arnold L. Putterman by Laurie & David Putterman  
Toby Fishman Grandmother by Laurie  
& David Putterman  
Dr. Martin Press and George Redler by Sherry Redler  
Judy Hoffman by Jill & Greg Rispler  
David Jaffe by Ken Rogers & Mindy Jaffe-Rogers  
Fred Rose by Linda & Norman Rose  
Ann Roseff by Barbara Rosseff & Robert Roseff  
Maurice Rosenthal by Lisa & Ken Rosenthal  
Idah Robins by Bruce, Meryl, Brooke,  
& Blaire Rosenwater  
Michael Nash and Idah Robins by Judy Rosenwater  
Marvin Roth by Francie Roth  
Ben Roth by Ellie Roth  
Herbert N. Lesser by Gloria Rothstein  
Laurette Goldberg by Izzy & Lee Rotter  
Marie Sherman by Laurie Silvers &  
Mitchell Rubenstein  
Noreen Rubin by Risa & Ron Rubin  
Marcia Myers by Sheldon & Cynthia Rubin  
Josh Pumphrey by Brett Schneider  
Linda Leshin by Barbara & Howie Schnoll  
Steven Schulman by Miki Schulman  
Clara Sherman by Rita Schuster  
Jane Schwab by Sandy & Tadd Schwab

Gussie Schwartz by Barry & Joanne Schwartz  
Marvin Ruttenger by Ken & Lynne Shapiro  
Valerie Klein, Jerry Singer, Bertha F. Aronson, Harry  
Friedman, and Jerry Shapiro by Merle Singer  
Claude Gozlan by Dominique & Steven Strom  
Ruth Stromberg by Gary Stromberg  
Jan Pacht by Natalie & Isi Sudit  
Robert Little by Sara & John Sundheim  
Larry Blanchard by Dave & Loren Szmiga  
Nurith Weitz by Dave & Loren Szmiga  
Harry Tabor by Susie & Mark Tabor  
Sidney Buksbaum by Barbara & Len Tamchin  
Edward Tavlin by Beth Tavlin  
Sonia Tendler by Minelle & Alfredo Tendler  
Polina Teslyar, Arkady Teslyar, Fanya Teslyar,  
Manya Kipervas, Senya Kipervas,  
Motya Grozmann, Klara Polterman,  
and Sara Wexler by Mikhail Teslyar  
Harry Thal by Sonny Thal  
Peter J. Sosin by The Choir  
Stuart (Pat) Cummings by Robin & Gary Warren  
Morris Schlier by Doris Weingrad  
Dr. Saul Fleegler by Lois & Gary Weinstein  
Sandra Weinstock by Sharon Weinstock  
David Weiss by Karen & Howard Weiss  
Barbara Ann Turkell-White by Pat White,  
Jenna Cohen & India Turkell  
Edith Gordon by Marilyn Wulkan  
Betty Wulkan by Marilyn Wulkan  
David Scharf by Rosa & Salomon Yaker  
Edward Fishman by Gigi Zeller  
Harvey Zipkin by Barbara Zipkin  
Linda Zipkin by Dan Zipkin

## Sisterhood Donations

01/16/2024 to 03/26/2024

### College Outreach

Hillary Watter  
Judi Zimmerman

### *in honor of*

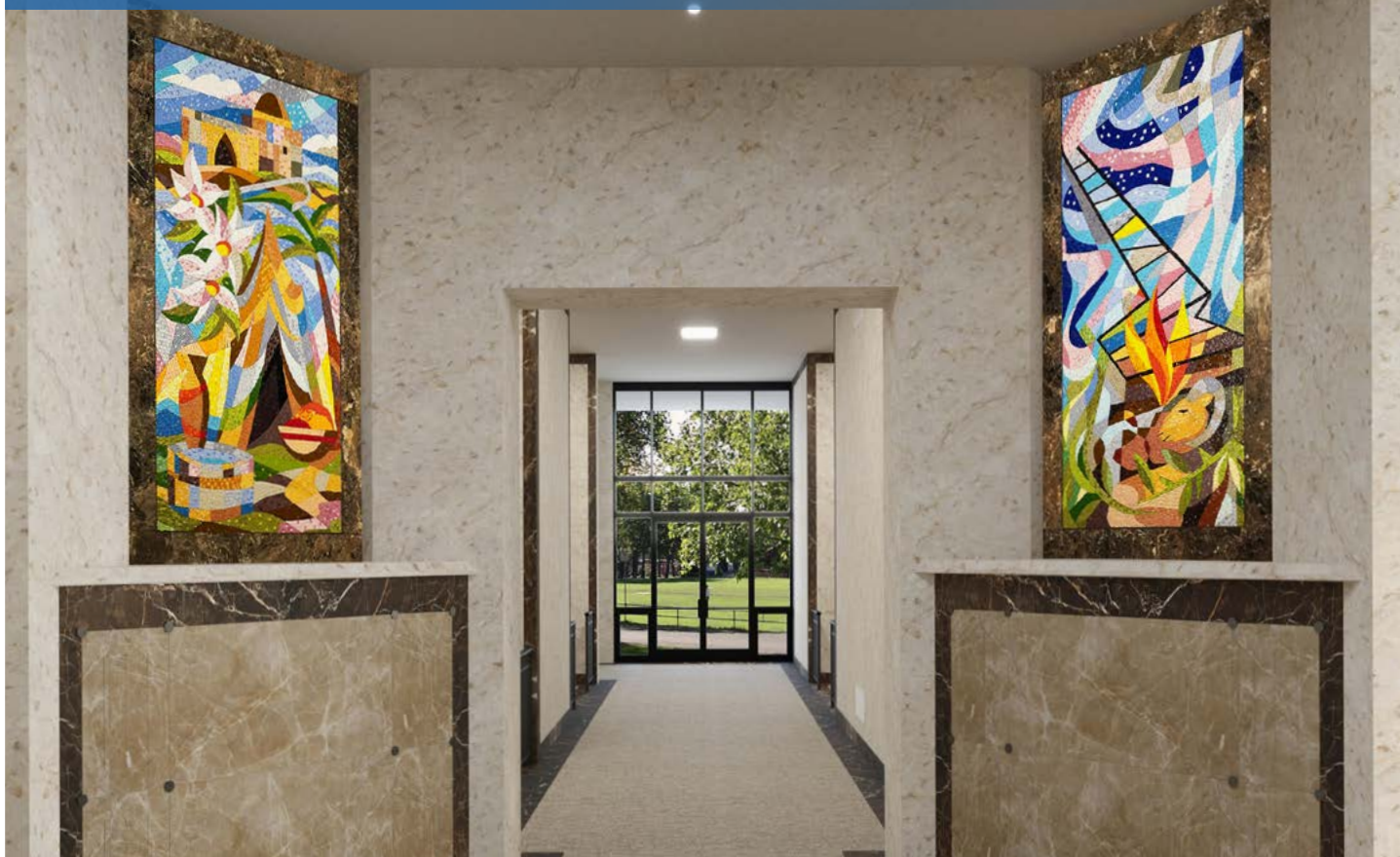
Debbie Gaines-Askowitz' speedy recovery  
by Susan and Richard Goldstein  
Susan Goldstein's speedy recovery  
by Jan and Allen Lev  
Allen Lev's speedy recovery by Susan  
and Richard Goldstein

### *in memory of*

Susan Bierman by Susan and Richard Goldstein  
Susan Bierman by Jan and Allen Lev  
Elliot Margolis by Michelle Fox  
Peter Sosin by Jan and Allen Lev



The Beth El Mausoleum expansion is now open for sales, with pre-construction prices that won't last.



Contact Mausoleum Director, **Mike Sirowitz** at **561-391-8901** or **mike@tbeboca.org** to set up an appointment.

For information including photos and videos, please visit our website at **[bethelmausoleum.org](http://bethelmausoleum.org)** or scan the QR code.



333 SW 4th Avenue | Boca Raton, FL 33432 | 561 391 8901  
**[bethelmausoleum.org](http://bethelmausoleum.org)**

Morgan Stanley

The Harbor Financial Group  
at Morgan Stanley

“Service designed to help affluent investors protect and  
simplify complex wealth with orchestrated financial care”



Daniel J. Guggenheim, CFP®, Senior Vice President, Financial Advisor;  
Howard Guggenheim, Senior Vice President,  
Senior Portfolio Management Director, Financial Advisor

595 S. Federal Highway, Suite 400 | Boca Raton, FL 33432  
561.393.2035

<http://fa.morganstanley.com/harborfinancialgroup/>

Morgan Stanley Smith Barney LLC. Member SIPC.  
CFP Board owns the mark CFP® in the U.S.  
CRC 5823913 7/23

TEMPLE OFFICERS

- Wendy Walin President
- Mark Sunshine Immediate Past President
- Gina Shugar Executive VP
- Jeff Katz VP of Leadership Development & Governance
- Josh Marcus VP of Finance
- Marcy Schultz VP of Religious Activities
- Danielle Butler VP of Education
- Joel Ivers VP of Development
- Susie Siegel VP of Membership & Engagement
- David Friedlander VP of Social Action
- Marla Schaefer Secretary
- Marisa Spiro VP ELC
- Bruce Moldow VP of Mausoleum
- Patty Beck VP at Large

TRUSTEES

- Brett Schneider
- lyne Mendelson
- Brooke Perez
- Dina Schwartz
- Casey Levin

LEADERSHIP COUNCIL

- Marc Applebaum\*
- Rachel Baron
- Patty Beck\*
- Traci Benedon
- Michael Blackman z"l
- Dana Brown
- Robin Eisenberg
- Aline Fisher
- Mandy Friedlander
- Herbert Gimelstob\*
- Lisa Glass
- Susan Goldstein
- Lauren Gross
- Joe Gudema
- Kari Hoffman
- Lauren Koblick
- Steven Lazarus
- Allen Lev
- Jon Levin
- Barbara Leventhal
- Robyn Marcus
- Lottie Nilsen
- Mark Platt\*
- Margie Plough
- Maurice Plough, Jr.
- Barry Podolsky\*
- Morris Robinson
- Debbie Rosenblum
- Rabbi Merle Singer
- Mark Sunshine\*
- Lisa Swartz
- Monica Weinberg
- Peter Wohlgenuth

TEMPLE LEADERS OF BLESSED MEMORY

- James B. Baer\*
- Donald Berger
- Alvin Cohen\*
- Frances Cohen
- Stanley Gray\*
- Stanford Hermann
- Ida Herst\*
- Joseph Q. Kline
- LTC Ben Lake
- Cis Rader
- Irving Rifkin
- Stanley Rose
- Albert Schiff\*
- Melvin Schwartz\*
- Bernard H. Shulman\*
- Alan H. Weiner\*

CLERGY

- Rabbi Daniel Levin
- Rabbi Greg Weisman
- Rabbi Elana Rabishaw
- Rabbi Laila Haas
- Cantor Lori Brock
- Cantorial Soloist Michelle Auslander Cohen
- Cantor Jake Harris
- Rabbi Emeritus Merle Singer, D.P.S., D.H.L., D.D.

SENIOR PROFESSIONAL STAFF

- Steve Kaufman, EXECUTIVE DIRECTOR
- Cindy Chieffo, CHIEF FINANCIAL OFFICER
- Susan Stallone, DIRECTOR OF MARKETING AND COMMUNICATIONS
- Jason Reasor, DIRECTOR OF FACILITIES
- Elinor Josephson, DIRECTOR OF ENGAGEMENT AND PROGRAMMING
- Mike Sirowitz, MAUSOLEUM DIRECTOR
- Derek Hurwitch, DIRECTOR OF DEVELOPMENT
- Rita Diamond, DIRECTOR OF OPERATIONS

MAIMONIDES INSTITUTE FOR JEWISH LEARNING

- Heather Erez, DIRECTOR OF YOUTH AND FAMILY EDUCATION AND ENGAGEMENT
- Ronni Graf, DIRECTOR OF EARLY LEARNING CENTER
- Robin Eisenberg, RJE, DIRECTOR OF JEWISH LEARNING AND LIVING EMERITA



\*Past President  
z"l - of blessed memory

Schaefer Family Campus 333 Sw 4th Avenue | Boca Raton, FL 33432 | 561 391 8900

Beck Family Campus 9800 Yamato Road | Boca Raton, FL 33434 | 561 391 9091

tbebo.ca.org



QUALITY ORTHODONTICS THAT WILL MAKE YOU SMILE

Phone: (561) 483-0072 (954) 346-0770

[www.orthodonticsofsouthflorida.com](http://www.orthodonticsofsouthflorida.com)

Advertise in  
The Chronicle



For more information and pricing  
call Amy Stein at 561-314-2834  
or email [astein@tbebo.ca.org](mailto:astein@tbebo.ca.org)  
or visit

[tbebo.ca.org/chronicle-advertising](http://tbebo.ca.org/chronicle-advertising)



# Auracal

## Senior Home Care, LLC

Do you know a family member, friend or a neighbor in need of Home Health Care?

Home Health Aides, Certified Nursing Assistants, and Registered Nurses to assist you with:



- Personal Care • Companionship • Respite Care • Alzheimer's & Dementia Care • Medication Management
- Transportation • Meal Preparation • Light Housekeeping • Grocery Shopping • Post Surgery Care

*Providing Qualified and Compassionate Care*

### COMPLIMENTARY IN-HOME CONSULTATION

Care Provided in the Comfort of Your Home, Hospital, or Facility  
We Accept All Long Term Care Insurance Policies and Private Pay — Affordable Rates

## CALL JILL: 954.604.1015

1014 Gateway Blvd., Suite 101 • Boynton Beach

[www.auracalshc.com](http://www.auracalshc.com)

Palm Beach NR30211558 • Broward NR30211706

*Jill Poser*

CGCM, CMC, CDCP

Private Duty Advisor

### PRIVATE DUTY HOME CARE *concierge* ✦ *heartfelt experiences to age-in-place*

We support families that are going through life-changing physical, emotional, and cognitive decline of their loved ones.

Private Duty Home Care Concierge has established 3-levels of support resources and coordination of services to assist you and your family:

Private Duty Home Care  
Care Management & Life Care Planning  
Family Guardian Support Services

We invite you to reach out to us for a complimentary consultation about how we can help you create solutions that address your family's unique circumstances.

561.817.2490 ✦ [info@pdhcc.com](mailto:info@pdhcc.com) ✦ [www.pdhcc.com](http://www.pdhcc.com)



Jill Poser, CGCM, CMC, CDCP  
*Principal*



333 Sw 4<sup>th</sup> Avenue | Boca Raton, FL 33432

Non-Profit  
Organization  
U.S. POSTAGE  
PAID  
Boca Raton, FL  
Permit No. 37

CURRENT RESIDENT OR

[Empty dotted box for address]

**DATED MATERIAL | PLEASE RUSH**

A Reform congregation affiliated with The Union for Reform Judaism



**BRILLIANT**  
Dermatology  
& Aesthetics

# DERMATOLOGY PERFECTED

When you come to Brilliant Dermatology & Aesthetics, you know you are seeing Dr. Norton, a highly trained board certified dermatologist who provides exceptional & personalized patient care. Dr. Norton's passion for skin health and her one-on-one approach have made her a favorite in South Florida.



**MEDICAL  
DERMATOLOGY**

**CUTANEOUS  
SURGERY**

**COSMETIC  
DERMATOLOGY**

**AESTHETIC  
SERVICES**

**SKIN  
CARE**

**DELRAY BEACH** 5162 Linton Blvd., Suite 203  
[www.brilliantdermatology.com](http://www.brilliantdermatology.com)  
**561.877.DERM (3376)**

**Elissa S. Norton, MD**  
Board Certified Dermatologist  
MIT | Harvard University  
University of Miami  
School of Medicine