



the chronicle

TEMPLE BETH EL OF BOCA RATON

JANUARY/FEBRUARY 2025 | SHEVAT 5785

Adult Engagement

Nourishment for the Soul

**House of
Prayer**

PAGES 10-12

**House of
Learning**

PAGES 13-15

**House of
Gathering**

PAGES 16-27

BUILT ON TRUST.

BUILT FOR LIFE.

BUILT FOR YOU. SINCE 1936.



CONCEPTUAL RENDERING | LAHINCH MODEL | PANTHER NATIONAL

PALM BEACH COUNTY'S PREMIER CUSTOM HOME BUILDER.

ELLISH
BUILDERS

Since 1936, Ellish Builders, now in our fourth generation, has blended a personal approach with artistry, innovation, and fine craftsmanship. We specialize in new construction and major renovations, crafting luxury homes built to stand the test of time.

Experience a custom-build process like no other with Ellish Builders.

VISIT OUR WEBSITE ELLISHBUILDERS.COM | 561.944.6818 | INFO@ELLISHBUILDERS.COM

Nourishment for the Soul

BY RABBI DAN LEVIN
DLevin@tbeboca.org

Every year, we all make the same commitments to ourselves. This is the year when I'm going to get into shape.

We promise ourselves we will watch what we eat, and make more time for exercise. We make a pledge to spend less time in front of our screens, and invest more time in healthy and more meaningful activity.

The truth is that our souls are just like our minds and our bodies. They require exercise and engagement. If we don't exercise our muscles, they will atrophy. If we don't exercise our minds, they will weaken. And if we don't engage our souls, they too will deteriorate and we will lose the capacity for spiritual experience and spiritual joy.

We need to be just as deliberate about taking care of our spirits as we are about taking care of our minds and bodies.

We need to be just as deliberate about taking care of our spirits as we are about taking care of our minds and our bodies.

Often, we think religious activities are for kids. And Temple Beth El offers amazing opportunities for children to explore the richness of their Jewish heritage. Our religious school classes help kids to develop understanding and awareness of the essential narratives of Torah, the traditions we observe in celebrating Shabbat and holy days, the way we as Jews celebrate the seminal moments of birth, coming of age, marriage, and loss.

They learn how our tradition guides us in building a life of meaning and service, grounded in the core values our people have championed for centuries. They develop the capacities for moral decision-making and how to build lives steeped in ethics and goodness. They build a deep appreciation for their connection to the Jewish people and for the miracle of the modern State of Israel.

But the fact is that Judaism isn't designed for children. The depth of wisdom and meaning in Jewish tradition is far too sophisticated and rich for children to fully grasp or comprehend. It's only when we are adults that

we can become aware of how truly wondrous and luminous are all the facets of Judaism, Jewish wisdom, and Jewish life.

And for many of us, we feel overwhelmed when we gaze at the corpus of what is Judaism. It feels so large and deep, and our understanding of it so small and limited, that we often feel uncomfortable and shy away.

But I want to invite you to make time for Jewish engagement. Temple Beth El is committed to building the most compelling program of adult spiritual growth and engagement we can offer. Make the commitment to engage. There are so many opportunities you can choose.

In these two months Temple Beth El will offer the opportunity to engage with truly extraordinary scholars. They will offer you the chance to try different modes of Jewish spiritual practice. They will challenge you to learn and to think. They will push you into deep introspection and reflection, to contemplate your own spiritual quest, your choices, and assumptions, and to wrestle with who we are in relation to our families, our community, our people, and our future.

I wish I could describe for you what it feels like to live more luminously and vibrantly, to be more steeped in awareness and gratitude, to love more deeply, and to live with more deliberate intention and wisdom. Our lives will be richer, our relationships deeper, our sense of self more vital.

In the Talmud, Hillel and Shammai don't agree on much, but they both agree on the importance of study. Shammai teaches, "Make your study a fixed habit," (Pirke Avot 1:15) and Hillel teaches: "Do not say, 'When I have leisure, I will study. You may never have that leisure.'" (Pirke Avot 2:4).

Engaging in Jewish learning and Jewish life will be rewarded with spiritual growth and spiritual health, a deeper sense of holiness and closeness to God, and a life rich in meaning, purpose, and blessing.



“Do not separate yourself from the community.”

— Pirkei Avot 2:5



BY **GINA SHUGAR**
TEMPLE BETH EL
PRESIDENT
GShugar@tbeboca.org

This timeless teaching reminds us of the importance of staying connected to our community. Personal growth and fulfillment are deeply intertwined with communal involvement.

Psychological studies show that being part of a religious community positively impacts mental health, leading to lower rates of depression and higher levels of happiness. Here at Temple Beth El, happiness and love are woven into our very mission:

To enrich lives by generating bonds of love through exceptional Jewish experiences.

It is my role as President of the Board of Trustees to ensure that Temple Beth El does not stray from our mission. As I reflect on 2024 and look forward to 2025, I am proud of all our community has accomplished to further this mission. We've had many big events and talented guest performers who enhance our special Shabbat services. We welcomed Rabbi Haas and celebrated the consecration of Cantor Harris. Our High Holy Days were especially warm and wonderful, bringing us all together under one roof. The Giving Tree holiday season was a huge success, distributing gifts to over 2,000 people in need. There are countless other special events that I can't possibly list here.

But it's not just the big events that create a sense of belonging. It's the everyday moments that are the heart of our congregational life—the peace

of attending a Shabbat service and the love and beauty it brings; the friendships and joy in our preschool community; the enlightenment and bonding when school-aged kids learn about the true meaning of Reform Judaism during religious school and its activities; learning from Rabbi Dan's Essential Questions podcast while walking the dog; the excitement of Bar and Bat Mitzvahs and weddings; the support and compassion shared during times of loss at funerals.

Regular programs like Lunch and Learn, Wise Living, and Rosh Chodesh feed our souls. Monthly Brotherhood, Sisterhood, and Parenthood events, along with gatherings by the Friends of Music and the Arts and our various Circles, all contribute to the bonds of love in our vibrant community.

It's beautiful how all these experiences fit within our mission. These everyday moments are the foundation of our community. They align perfectly with our goal of enriching lives by generating bonds of love through exceptional Jewish experiences, contributing to our members' happiness and sense of belonging.

As you read through this Chronicle, I hope you will find new ways to include yourself—not just in the big events, but also in the regular gatherings our temple offers. May your year be filled with happiness and bonds of love through all your experiences at Temple Beth El.

New Member Meet & Greet

Sunday, January 12

1:30pm

Schaefer Family Campus

We warmly invite all new members - singles, couples, and families with children of all ages - who joined since February 2024 to our New Member Meet and Greet. Meet our clergy, staff, and fellow new members and experience the vibrant diversity and warm spirit of our Beth El community. Light refreshments served. We look forward to welcoming you!

Register at tbeboca.org/new-member

Please contact Debbie Eisenberg at DEisenberg@tbeboca.org for more information.



New Member Meet & Greet is sponsored by our Membership & Engagement Committee and generously underwritten by Sisterhood and Brotherhood

WELCOME

Celebrating New and Returning Members

Welcome New and Returning Members who have joined between September 23, 2024 and November 18, 2024. Additional members not listed at the time of printing will be included in our next list! For help getting involved, please contact Elinor Josephson, Director of Engagement and Programming, at EJosphson@tbeboca.org or 561-391-8900.

Irene Abrams	Curtis & Ellen Foster	Maria & Andy Leff and their children, Robert & Max	Barbara & Marvin Smulowitz
Michelle Clair Adelman & Michael Adelman and their children, Eva & Margot	Mark Friedlander & Lynne Brennen and their child, Rachel	Arnold & Sherrie Lentnek	Douglas & Alaina Squires and their children, Luca & Dean
Lynne Balan	Scott & Wendy Garvis and their children, Samantha & Lily	Cindy & Arthur Liebenthal	Bruce Stein
April & Josh Beck and their children, Ariana & Jack	Helene Goldsticker	Cory & Dana Mead and their child, Maxine	Drew & Melissa Stein and their children, Madeline & Samantha
Ilene Becker & Gale Baim	Amy & Richard Greenblatt	Laura & Howie Needleman	Frank Surnamer
Sari Bedevian	Matt & Marlee Hale and their child, Henry	Eileen & Steven Nekava and their children, Abigail & Elise	Thomas Terwilliger
Zach & Brooke Bernstein and their child, Clark	Debra Harvey	Ashley & Andrew Pollowitz	Randi Tompkins
Randi Brett	Sharyn Harvey	Bobbi Gianat & Babs Rachells	Israel & Johanna Tsadok and their children, Yoav & Jordan
Susan Bricker	Barbara & Bob Hausman	Frank Romano	Jennifer Weinstein and her child, Daniella
Harvey Casher & Rita Bigel-Casher	Nina Haveson	Dona Root	Leidy & David Weinstein and their children, Geraldine & Natasha
Arlene & Bob Chavez	Ashley Holland & Blake Fishman	Jeffrey Rosen	Carol Winig
Rob & Sheri Cohen and their children, Meghan & Jake	Patrick & Leah Hosey and their children, Jonah & Evelyn	Rise & Leon Saginor	Carmel & Meredith Winkler and their children, Naomi & Eden
Jody & Jeff Davis	Carol & Robert Jablow	Dov & Maria Seidman and their children, Lev & Lana	Dona & Neal Ziegler
Jonathan Dickstein & Tamara Sager Dickstein and their child, Raya	Tom Kaplan	Tara Shinn	
Margaret Eichler	Jonny Kelman	Ina & Leonard Skralivetsky	
	Serena & Zev Laine	Ted & Kay Smith	

Meaningful Mitzvah Opportunity

Did you appreciate receiving a call or message from a fellow temple member wishing you a happy and sweet New Year? Now you can be part of this meaningful mitzvah for Passover!

Join our wonderful Chaverim Team—a group of friendly callers who help strengthen our community connections. All you need to do is say hello, ask how they're doing, and wish them a happy holiday! It may seem like a small gesture, but it truly makes a big impact!

If you're interested in volunteering as a caller, please contact Susie Federman, Engagement & Programming Associate, at SFederman@tbeboca.org or 561-314-2783.

Thank you so much for your support.



If Temple Beth El is a
Meaningful Part of Your **Life...**



...Let it Be a **Meaningful**
Part of Your **Legacy**



Thank you for your participation,
your generosity, and your commitment
to Temple Beth El.

If you would like to participate
in Temple Beth El's BE The Future campaign
or have any questions, please contact
Derek Hurwitch, Development Director,
at 561-701-6217 or
DHurwitch@tbeboca.org.



THE FUTURE

An Endowment Campaign
to Secure Beth El's Tomorrow



FORMAL
INVITATION
COMING
JANUARY 2025

SAVE THE DATE



What Happens in Boca...

A Night in Shin City



A VEGAS-INSPIRED EVENING OF JUBILANCE & JACKPOTS

SATURDAY, APRIL 5, 2025 | 6:30PM

LIVE CASINO GAMES | COCKTAIL CHIC ATTIRE | VALET PARKING

TICKETS GO
ON SALE
**MONDAY
JANUARY 6,
2025**



VISIT [TBEBOCA.ORG/2025BASH](https://tbeboqa.org/2025bash)
OR SCAN THE QR CODE FOR
SPONSORSHIPS AVAILABLE NOW

**PROCEEDS FROM THE 2025 BETH EL BASH WILL BENEFIT TEMPLE
BETH EL SCHOLARSHIPS, PROGRAMS AND OPERATIONS.**

FOR MORE INFORMATION, PLEASE CONTACT DEREK HURWITCH,
DEVELOPMENT DIRECTOR, AT 561-701-6217 OR DHURWITCH@TBEBOCA.ORG

Adult



BY **RABBI LAILA HAAS**
LHaas@tbeboca.org

Within the vibrant life of our Temple Beth El community, adult engagement offers an opportunity to deepen spiritual connection, ritualize life's transition moments, and discover the sacred embedded in our everyday lives.

The first step to developing a vision for adult engagement at Temple Beth El is to get a sense of what people are thinking about, wrestling with, and seeking. My *Shema*/listening journey began a few months ago and I've had the privilege of meeting with many of our adult Temple Beth El members and have shared beautiful conversations exploring questions like:

- What's been taking up space in your heart lately?
- What's the thought, challenge, or idea that keeps asking for your attention?
- What are you holding onto that feels heavy, or even light, as you move through this stage of your life?

The explorations have been so meaningful in creating relationships and connections as well as developing an understanding of where we are now and where we hope to grow spiritually. These reflections help shape the engagement opportunities and soulful experiences that we will design and offer our Temple Beth El community. The insights shared serve as a foundation for curating experiences that meet the spiritual needs and desires of our community.

Rabbi Abraham Joshua Heschel taught that Judaism is a "response to the mystery of living," a tradition that

Engagement



invites us to grapple with life's biggest questions and to live intentionally. Offering space to explore who we are, what we believe, and how we connect to something greater than ourselves embodies our mission of creating bonds of love through exceptional Jewish experiences.

Engaging in Jewish learning, ritual, and community is not merely about preserving tradition; it is about growing as spiritual beings. Our vibrant synagogue serves as a *beit midrash*, a house of study where we can grapple with text and tradition, discover new insights, and apply them to contemporary challenges. It is also a *beit tefilah*, a house of prayer, where we bring our hopes and thoughts into conversation with the Divine, and a *beit kneset*, a house of gathering, where relationships are nurtured. Together, these spaces inspire a Judaism that is not static but dynamic, a source of wisdom for our modern lives.

The Talmud teaches “each generation has its own interpreters,” meaning that we are not only heirs

to tradition but its co-creators. Empowering adults to evolve in their spiritual journey while remaining anchored in authenticity creates a living Judaism that encourages us to see the world through a Jewish lens. It invites us to reimagine age-old rituals to elevate our experiences and guide us towards meaning and purpose as we navigate the next chapter of our lives.

Over the next few months, we have designed meaningful engagement experiences for the mind and soul. We will have the opportunity to learn from and with inspiring and thought-provoking guest scholars and leaders in the field Jewish learning. Rabbi Naomi Levy will explore the Power of Resilience and Hope, and Rabbi Danny Schiff will present Judaism in a Digital Age. President Andrew Rehfeld of Hebrew Union College will discuss Divine Commandments and Love. Our Lunch & Learn series will focus on the Pathways to Hope and Resilience and Judaism in a Complex World. We will travel together to the

Nova Festival Experience in Miami to bear witness, hear the story of a survivor and reflect together. We will host Rabbi Plotkin, author of “Wisdom Grows in my Garden” for a discussion on finding meaning in

The Talmud teaches “each generation has its own interpreters,” meaning that we are not only heirs to tradition but its co-creators.

unexpected places. Just to highlight a few. To engage in Jewish life as an adult is to say *hineni*—“Here I am”. I am ready to embrace the fullness of my spiritual being. I invite you to step forward with intention, curiosity, and openness. Together we will find meaning and connection as we seek to grow spiritually together.

The *Shema*/listening journey is ongoing. Please reach out to me and let's set a time to share sacred space together. I want to know what your mind is focusing on and what your soul is seeking.

Shabbat

Visit tbeboca.org/shabbat for a detailed service schedule including in-person and online viewing options.

SHABBAT SERVICES

Shabbat Services every Friday Evening at the Schaefer Family Campus

Friday, January 3, 6:00pm

Shabbat Celebrating the Music of Debbie Friedman z"l

Friday, January 10, 7:30pm

Parashat Vayechi

Friday, January 17, 7:30pm

Parashat Shemot

Friday, January 24, 7:30pm

January Birthdays

Friday, January 31, 7:30pm

Repairing this Beautiful Broken World with Scholar in Residence Rabbi Naomi Levy. See page 13.

Friday, February 7, 6:00pm

Shabbat Shira. Dinner to follow. See page 12.

Friday, February 14, 7:30pm

Commanded to Love with Guest Scholar Andrew Rehfeld, Ph.D. See page 14.

Friday, February 21, 7:30pm

February Birthdays & A 19th Century Interfaith Story with Guest Scholar Rabbi Lisa Grushcow. See page 15.

Friday, February 28, 7:30pm

Sisterhood Shabbat

KOL HANESHAMA SHABBAT SERVICES

Through the use of niggunim (wordless melody) and inspiring melodies and words, we will deepen our connection to ourselves, to each other and the Holy One, at our service in the round.

Schaefer Family Campus

Friday, January 24, 6:00pm

Friday, February 21, 6:00pm

SHABBAT MORNING MINYAN

First Saturday of the month at the Schaefer Family Campus

Saturday, January 4, 10:45am

Monthly Shabbat Morning Experience

Saturday, February 1, 10:45am

Talking to God with Scholar in Residence Rabbi Naomi Levy. See page 13.

SHABBAT FOR FAMILIES

Beck Family Campus

Friday, January 10, 6:00pm

Pajama Tot Shabbat. Pizza and Story Time to follow. See page 23.

Friday, January 17, 6:30pm

Family Shabbat Dinner, for members with children in grades K-12. See page 11.

Friday, January 31, 6:30pm

Shabbat Unplugged: Country Rock. See below



TORAH STUDY

Torah Study is held every Saturday morning at 9:30am with our clergy at the Schaefer Family Campus. Below are three sessions with special guests.

TORAH STUDY WELCOMES THE FOLLOWING SPECIAL GUESTS**Saturday, January 18, 9:30am**

Singing Through the Sea, Lamenting at the River: Musical Torah Study with Artist in Residence, Rabbi Deborah Sacks Mintz. See page 16.

Saturday, February 1, 9:30am

Torah Study and Prayer Writing Workshop with Scholar in Residence Rabbi Naomi Levy. See page 13.

Saturday, February 22, 9:30am

The Women and the Mirrors with Guest Scholar Rabbi Lisa Grushcow. See page 15.

**UNPLUGGED
TRY ROCK**

A soulful and spirited evening under the stars in the Big Backyard at the Beck Family campus. We'll blend the warmth of acoustic melodies, the timeless rhythms of country rock, and the sacred traditions of Shabbat in an unforgettable, down-to-earth experience.

Register at tbeboca.org/unplugged

Interactive Festive Family Shabbat Dinner & Experience

Friday, January 17

6:30pm

Beck Family Campus

Register at tbeboca.org/shabbat-dinner

Temple Beth El members only

Families with children in grades K-12, join us for an exciting and interactive Shabbat experience for the whole family! Reconnect with old friends and make new ones as we gather for candle lighting with clergy, a delicious dinner and dessert, singing, dancing, and loads of fun!

Make sure to bring your Shabbat candles and candlestick holders so we can bring in the light of Shabbat together.

Adults: \$25; Children Under 12: \$10

Prices increase by \$5 per person on Monday, January 6, 2025

Last day to register is Monday, January 13, 2025

For questions, please contact Susie Federman, Engagement & Programming Associate, at 561-314-2783 or SFederman@tbeboca.org.

Register at tbeboca.org/shabbat-dinner



Shabbat Shira

Friday, February 7
6:00pm Service
7:30pm Optional Dinner
Schaefer Family Campus

This Shabbat we celebrate this Sabbath of Song and the power of music by welcoming all of our Temple Beth El music ensembles along with professional instrumentalists and our clergy. Join us as we take a musical journey from slavery to freedom and reflect upon our redemption. Following this festive service, join us for a delicious Italian dinner.

Optional Dinner
7:30pm

Members
Adults: \$25
Children ages 4-12: \$18

Guests of members
Adults: \$30
Children ages 4-12: \$23

Prices increase \$5 as of
Tuesday, January 28, 2025.

Last day to register is
Monday, February 3, 2025

Register for dinner at
tbeoca.org/shira

Night of 50 Shabbats

Friday, March 7
6:00pm
Temple Beth El
members only

*Let's celebrate Shabbat
all around the town! Your
choice – you can be a
host or a guest and share
Shabbat dinner with other
Temple Beth El members.*

SIGN UP NOW! HERE'S HOW

BE A HOST: You decide!

How many guests can you accommodate? Are there members you are inviting? Will you be dining inside or outside? Hosts receive a special 'thank you' gift from the Temple, generously sponsored by Sisterhood and Brotherhood.

BE A GUEST: You decide!

Is there a particular home you'd like to attend? Is there a person you'd like to attend with?

VIDEO SHABBAT BLESSINGS: Each host will receive a video link for Shabbat blessings led by our clergy. Everyone will gather at their host's location to celebrate together.

DINNERS: It's Florida! Embrace the outdoors and enjoy dinner in people's backyards/patios, or at a restaurant, park or clubhouse – wherever works best for you. As a host, you can cook, make it potluck, or order in.

There's **NO FEE** to participate in this event.

Register to be a HOST or GUEST at
tbeoca.org/50-shabbats

Deadline to register: Monday, February 17, 2025

There will be in-person Shabbat services from 5:30pm-6:00pm at the Schaefer Family Campus for those who wish to worship with us or are observing Yahrzeit and saying Mourner's Kaddish.



SCHOLAR IN RESIDENCE
Rabbi Naomi Levy



A SHABBAT WEEKEND OF
HOPE
JEWISH PRIDE
SOUL *and* RESILIENCE

SHABBAT: REPAIRING THIS BEAUTIFUL BROKEN WORLD

Friday, January 31 • 7:30pm

Schaefer Family Campus

TORAH STUDY & PRAYER WRITING WORKSHOP

Saturday, February 1 • 9:30am

Schaefer Family Campus

**MORNING MINYAN: TALKING TO GOD -
FINDING OUR OWN VOICE IN PRAYER**

Saturday, February 1 • 10:45am

Schaefer Family Campus

Rabbi Naomi Levy, bestselling author, is the founder of *Nashuva*, a groundbreaking Jewish outreach community, based in Los Angeles. A unique and passionate voice in the contemporary Jewish world, Naomi was in the first class of women to attend The

Jewish Theological Seminary's Rabbinical School and the first female Conservative rabbi to head a pulpit on the West Coast. Through *Nashuva*, Naomi has drawn thousands of unaffiliated Jews back to Judaism with a soulful approach, linking

together prayer, spirituality and social justice. Newsweek included Naomi in its "Top 50 Rabbis in America" list and the *Jewish Forward* listed Rabbi Levy as one of the nation's 50 most influential Jewish leaders.

**SPECIAL GUEST
AUTHOR AND
SCHOLAR**

**Rabbi
Paul Plotkin**



Wisdom Grows in My Garden
SENIOR CIRCLE EVENT

Sunday, February 2

11:30am Bagels and Schmooze

12:00pm Presentation

Schaefer Family Campus

Temple Beth El members only

Register at tbebo.ca.org/senior-circle

Enlightening, topical and humorous, the stories in "Wisdom Grows in My Garden" will make you smile and nod in recognition of life's simplest, and at times unacknowledged lessons. Author, Rabbi Paul Plotkin will share his narrative memoir that will inform your life, amuse you in the process, and maybe even give you the itch to grow a garden!



Lunch & Learn

PATHWAYS TO HOPE & RESILIENCE

With Rabbi Laila Haas

Tuesdays, January 7, 14, 21, 28

12:00pm

Schaefer Family Campus & Virtual Beth El (Zoom)

Together we will explore the profound works of our January Scholar in Residence, Rabbi Naomi Levy. Her writing masterfully links together prayer, spirituality and faith.



Session 1: Begin Again

Session 2: Hope Will Find You

Session 3: Einstein and the Rabbi

Session 4: Talking to God

UNDERSTANDING OURSELVES AND JUDAISM IN A COMPLEX WORLD

With Rabbi Larry Kotok

Tuesdays, February 4, 11, 18, 25

12:00pm

Schaefer Family Campus & Virtual Beth El (Zoom)

Together we will seek to understand what we as Jews believe and what others believe about Judaism.

Session 1: Jewish understanding of the Sermon on the Mount

Session 2: Judaism's teaching on the concept of Messiah and how Christians understand it

Session 3: The rise of antisemitism after October 7

Session 4: The belief in God and what that means today



SHABBAT SERVICE

COMMANDED TO LOVE



SPECIAL GUEST SCHOLAR

Andrew Rehfeld, Ph.D.

PRESIDENT OF HEBREW UNION COLLEGE – JEWISH INSTITUTE OF RELIGION

Friday, February 14

7:30pm

Schaefer Family Campus

Guest scholar Andrew Rehfeld, Ph.D., President of Hebrew Union College-Jewish Institute of Religion, joins us this evening as we read the Ten Commandments and reflect upon the connections between divine commandment and love.

Andrew Rehfeld received a Ph.D. in Political Science from the University of Chicago, and an MPP from Chicago's Harris School of Public Policy Studies. Among the most cited theorists of political representation today, his academic research focuses on the intersection of democracy, human rights, justice, and institutional design.

Other areas of published research include the history of political thought, the philosophy of the social sciences, and the political uses of the Hebrew Bible.





**SPECIAL GUEST
SCHOLAR
Rabbi Lisa
Grushcow**

SHABBAT SERVICE

**Two Scottish Sisters
and a Scholarly Rabbi**

**A 19TH CENTURY
INTERFAITH STORY**

Friday, February 21

7:30pm

Schaefer Family Campus

TORAH STUDY

**The Women
and the Mirrors**

**A MIDRASHIC JOURNEY
OF HEALING AND REDEMPTION**

Saturday, February 22

9:30am

Schaefer Family Campus

Rabbi Lisa Grushcow was ordained at the Hebrew Union College-Jewish Institute of Religion and served on the clergy team at Congregation Rodeph Sholom in New York City, becoming senior rabbi of Temple Emanu-El-Beth Sholom in Montreal, Canada in 2012. Born and raised in Canada, her BA is from McGill University, and she earned her master's and doctoral degrees at Oxford University as a Rhodes Scholar. Beginning with the Jewish-Christian-Muslim conference in Bendorf, Germany, Rabbi Grushcow has a long history of interfaith bridge-building, and is currently involved with the Solidarity Dialogues in Montreal and is actively engaged in Jewish pluralism.



JUDAISM IN A DIGITAL AGE

JUDAISM AND AI

Thursday, March 27 • 7:00pm

Location to be announced

Register at tbeboca.org/digital-age

SHABBAT SERVICE

**AN ANCIENT TRADITION
CONFRONTS
A TRANSFORMATIVE ERA**

Friday, March 28

6:00pm Shabbat

7:30pm Optional Dinner and Learning Experience

Schaefer Family Campus

Dinner prices:

Members: \$36; Non-members: \$41

Prices increase \$5 as of Tuesday, March 18

Registration closes at 12:00 pm on Tuesday, March 25

Register at tbeboca.org/schiff



**SCHOLAR IN
RESIDENCE
Rabbi
Danny
Schiff**



New Moon Rising

IN CONCERT

SUNDAY | JANUARY 19 | 3:00PM
SCHAEFER FAMILY CAMPUS



\$100/Reserved Benefactor
\$36/Preferred
\$18/General • \$10/Student

New Moon Rising brings together three of the most dynamic and creative voices in Jewish music - Elana Arian, Deborah Sacks Mintz, and Chava Mirel - and the results are pure magic. A trio of female powerhouses, New Moon Rising embodies the best that musical collaboration can be - a soulful oasis of rich harmonies, deep friendship, and joy.

Register at tbeoca.org/new-moon-rising

ARTIST IN RESIDENCE

Rabbi Deborah
Sacks Mintz



SACRED SONG CIRCLE

Thursday, January 16 | 7:00pm

Schaefer Family Campus

Through the meditative power of the niggun—wordless participatory melody—we'll raise our voices and lift our spirits together. Experience the joys of communal song with a Jewish music experience — one-part participatory song session, one-part spiritual practice.

MUSICAL TORAH STUDY: SINGING THROUGH THE SEA, LAMENTING AT THE RIVER - SONG NARRATIVES IN TANAKH

Saturday, January 18 | 9:30am

Schaefer Family Campus

How has music expressed both power and joy, suffering and loss, throughout the narrative of the Jewish people? Where do we see our own experiences embedded within these stories? In this text-based class, we'll explore two key Biblical narratives centering the outpouring of song - building out our own continued stories of powerful prayer from within.

Rabbi Deborah Sacks Mintz is an educator, practitioner, and facilitator of Jewish communal music and serves the Hadar Institute as their Director of Tefillah and Music. Both within the beit midrash and out in the community, Deborah strives to interweave song and Torah as integrated tools in the process of unearthing the grassroots creative spirituality of the Jewish and global people. Deborah received rabbinic ordination from the Jewish Theological Seminary where she also earned her master's in women and gender studies, and holds degrees in music and religious anthropology from the University of Michigan.

*Generously funded by the
Procacci Family Artist in Residence Endowment
and Friends of Music and the Arts*

CANTOR STEPHEN DUBOV Z"l
17TH ANNUAL MEMORIAL CONCERT

Noah Aronson LIVE

SUNDAY | FEBRUARY 16 | 3:00PM

CONGREGATION B'NAI ISRAEL

Noah Aronson is a Jewish composer and performer whose music is known worldwide for its spiritual depth and unique ability to engage community in prayer. Noah is now touring with an incredible band of Israeli musicians he met while studying at Berklee College of Music in Boston. Audiences will experience a highly interactive, spiritually uplifting and emotionally moving concert that will leave your community singing.

Registration and ticket prices coming soon and available at cbiboca.org.

z"l = of blessed memory



CANTORIAL
SOLOIST

MICHELLE AUSLANDER COHEN



MY FAVORITE THINGS

A MUSICAL CELEBRATION

SUNDAY | MARCH 2 | 7:00PM

SCHAEFER FAMILY CAMPUS

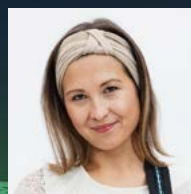
\$100/Benefactor Reserved Seating

\$36/Preferred • \$18/General • \$10/Student

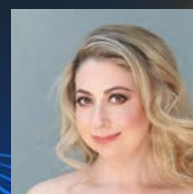
Join us as Cantorial Soloist Michelle Auslander Cohen celebrates her 50th birthday and shares an evening of her favorite music! From soulful Israeli melodies, beautiful operatic tunes and show-stopping Broadway hits, Michelle will offer a musical experience that will leave you inspired, uplifted and entertained.

Cantorial Soloist Michelle is joined by performers Coleen Dieker, Erica Strauss, Temple Beth El's Cantors Lori Brock and Jake Harris, and outstanding guest musicians.

Register at tbeoca.org/favorite



Coleen Dieker



Erica Strauss



Stand Together

**UNITY, STRENGTH,
RESILIENCE RALLY FOR ISRAEL**

A group of Temple Beth El members led by Rabbi Laila Haas and Cantorial Soloist Michelle Auslander Cohen traveled to Washington, DC to participate in the Stand Together: Unity, Strength, Resilience rally for Israel, on the anniversary of the historic 2023 March for Israel.

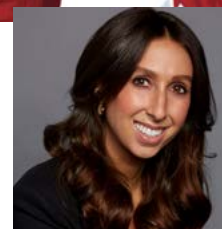
The weekend began with a beautiful Shabbat morning worship at the National Arboretum, followed by a meaningful Havdalah near the memorials. Then on Sunday, the group gathered in solidarity at the rally, showing a powerful demonstration of unity and strength.

Thank you to everyone who came together to stand with Israel, for the hostages, and against antisemitism!



A CONVERSATION WITH AMANDA BERMAN

Wednesday, January 8 | 7:00pm
Schaefer Family Campus
Temple Beth El members only



Since October 7, 2023, the intersection between Zionism and progressivism seems to be tearing at the seams.

Join Amanda Berman, Founder and CEO of the Zioness Movement, in conversation with our Temple Beth El clergy, as we see how the principles of Zionism and progressive values can be naturally woven together. Together, we will reflect on how our commitment to Jewish identity and tradition calls us to fight for equality, dignity, and a better world.

Amanda Berman is a civil rights attorney who previously worked to fight antisemitism legally and now dedicates her career to the advancement and protection of the Jewish people and the Zionist community.

Register at tbeboca.org/zioness



Israel Needs Our Voice

The North American Reform Movement is launching a powerful campaign to protect democracy, pluralism, and Reform Judaism in Israel by mobilizing for the World Zionist Congress election. YOU CAN HELP.

What is The World Zionist Congress (WZC)?

It is the representative body in Israel for Jewish communities worldwide. It meets every five years and controls a \$1 billion budget, which is allocated according to our votes.

The ultra-Orthodox and ultra-Nationalist movements are using the levers provided through these institutions – and power gained in the World Zionist Congress elections – to advance their agenda, including:

- ✗ Rolling back gains for LGBTQ+ rights, gender equity, and religious pluralism
- ✗ Stripping Israeli Reform clergy and communities of their rights and funding
- ✗ Advancing policies to weaken the influence of Reform Jews by rejecting our conversions and questioning the authenticity of our children's Jewish identity
- ✗ Ensuring ultra-Orthodox Israelis will not serve in the IDF
- ✗ Allowing the ultra-Orthodox to keep the core curriculum out of their schools, and to advance additional gender segregation in Israeli society

We cannot let this happen.

Temple Beth El is committed to organize and mobilize turnout for the 2025 WZC vote. What can happen if we vote?

- ✓ Protect and advance gains in gender equity, LGBTQ+ rights, and religious pluralism (Orthodox, Conservative and Reform)
- ✓ Protect our Israeli Reform clergy – especially our women rabbis – and our Reform communities - of their rights, funding, and infrastructure
- ✓ Ensure that our converts and children are welcome in the Jewish state

Get Involved

- Voter registration information coming soon
- To learn more, contact Temple Beth El's WZC Election Captain Aline Fisher at alinef4744@gmail.com or Rabbi Elana Rabishaw at erabishaw@tbeboca.org



Thank You!

Thank you to all who participated in another successful Giving Tree Holiday Wish List Drive. Every wrapped gift, every gift card and every donation of tzedakah helps bring holiday cheer to people who need it most. ***What makes the Giving Tree Holiday Wish List Drive special?*** Each recipient requests and receives a personal gift that is meaningful to them.

Special thanks to our Agency Captains who work tirelessly to receive, organize and distribute thousands of gifts to recipients in our community, to Izabela Carstens who developed our website and created our online wish lists, and to Robin Eisenberg and Judy Kuritz who keep the Holiday Workshop and Gift-Wrapping Station running smoothly!

AGENCY CAPTAINS

- **Marjorie Minor, Sari Sheiner** - Best Foot Forward (Kids)
- **Natalie Lerch** - Best Foot Forward (Teens)
- **Susie Tabor, Debby Glick, Barbara Knapp** - Boca Rio Post Office Station
- **Suzanne Katz, Lizzie Paskal, Debbie Kimmel** - Brothers Helping Brothers Kids
- **Deb Gudema, Dina Schwartz** - Brothers Helping Brothers Seniors
- **Karina Grozman** - Caridad Center
- **Becky Harlem, Andrea Colton** - Church Group
- **Marcy Hankin - Schultz, Michele Kahan** - Dixie Manor
- **Stephanie Lowen** - Friends of Foster Children
- **Barbara Urban, Mia Wiener** - General Wish List/Quiet Giving
- **Barbara Urban, Mia Wiener** - Guardian Ad-Litem
- **Judy Blackman, Debbie Averbok** - Healthy Mothers Healthy Babies
- **Susie Tabor, Debby Glick, Barbara Knapp** - Jewish Family Services
- **Susie Tabor, Debby Glick, Barbara Knapp** - Menorah House
- **Cara Gottlieb, Jill Smith** - Moon of Hope
- **Linda Berger** - POST (Pediatric Oncology Support Team)
- **Susie Tabor, Debby Glick, Barbara Knapp** - The Terrace of Delray (Linton Blvd.)
- **Betty Shore** - Vita Nova Kids
- **Betty Shore** - Vita Nova Teens
- **Susie Tabor, Debby Glick, Barbara Knapp** - Wayne Barton Center
- **Susie Tabor, Debby Glick, Barbara Knapp** - West Boca Post Office Station



Lauren Gross and Jennie Lewin Kreger
Giving Tree Co-Chairs



For more information on the good The Giving Tree does in our community, please visit thegivingtreeboca.org.

Quiet Giving

JANUARY SOCKS AND UNDERWEAR DRIVE

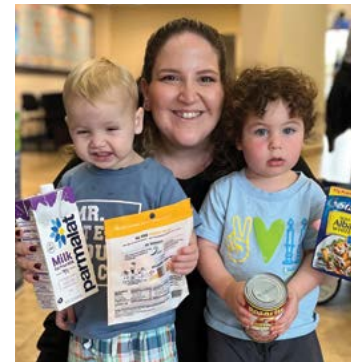
The Giving Tree Quiet Giving Program runs year-round, and provides basic necessities including clothing, school uniforms, shoes, socks, underwear and more, to families and children in need. With a



concentration on "Rapid Response" support, we can contribute to the dignity and general well-being of families in dire circumstances. A case manager from one of our participating agencies makes the referral and we meet the need. No red tape or interview process is required.

Help us stock the closet and drop off NEW, PACKAGED SOCKS AND UNDERWEAR at both the Beck Family Campus and the Schaefer Family Campus during the month of January! All sizes are appreciated, from toddler to XXL adult.

For questions about an item to donate, please email contact@thegivingtreeboca.org.



BEIT KNESSET | HOUSE OF GATHERING EARLY LEARNING CENTER



BY **RONNI GRAF**
BETH EL EARLY
LEARNING CENTER
DIRECTOR
RGraf@tbeboca.org

I am frequently asked by both Temple Members (without a child at the Early Learning Center) and prospective parents, “what makes our school different than the many others in Boca Raton?” While I can think of many things that set our school apart as a center of excellence including our incredible staff, beautiful facility, supportive Board of Trustees and more, the thing that tops my list is Parenthood.

Parenthood is our volunteer parent organization, but they are so much more than that. Parenthood provides opportunities for our parents to engage with each other and make long lasting connections and friendships. Very often, the friends that young families make through their child’s early childhood experience will remain friends for a lifetime.

So how does Parenthood accomplish their lofty goals of engaging young parents with limited free time? They facilitate our room parent program that supports each of our individual classrooms, run our Book Fair, Staff Appreciation Week, Social Action programs, and a myriad of other school programs that give Beth El Early Learning Center parents the opportunity to volunteer to help make our school great and meet others in the process. They set up classroom WhatsApp groups

as a communication tool to connect parents with each other. Perhaps most impactful are the fantastic social programs that they plan throughout the year. Girls’ Nights Out, Guys’ Nights Out, and Parents’ Nights Out give Early Learning Center parents the opportunity to enjoy the company of other ELC parents at engaging programs either here at the Beck Family Campus or out on the town. The mission of these events is simple...have fun, make new friends and spend quality time with old friends.

Parenthood makes our school special. Parenthood engages parents. Parenthood makes our school a community.



Registration Dates FOR THE 2025-26 SCHOOL YEAR

Monday, January 6

Registration Opens to Currently Enrolled Families on a first come, first served basis

Wednesday, January 22

Enrollment Decisions Sent to Temple Members

Monday, January 13

Registration Opens to Temple Beth El Members (as of October 1, 2024) without a child currently enrolled in the Early Learning Center

Saturday, January 25

New Family Application Opens

Monday, February 10

Enrollment Decisions Sent to New Families



Important Dates

Wednesday, January 1 –
New Year's Day – No School

Thursday, January 2 – School Resumes

Friday, January 10 –
Wear Your Pajamas to School Day

Monday, January 20 – Martin Luther King, Jr. Day
– No School

Saturday, January 25 – Family Fun Day

Wednesday, January 29 – Triple P Parenting
Workshop – 7:00pm

Tuesday, February 4 – Pre-K Graduation Portraits

Tuesday, February 11 –
Tu B'Shevat Celebration – 4 years old classes

Wednesday, February 12 –
Tu B'Shevat Celebration – 3 years old classes

Wednesday, February 12 –
Triple P Parenting Workshop – 7:00pm

Thursday, February 13 –
Tu B'Shevat Celebration – 2 years old classes

Friday, February 14 –
Staff Development Day – No School

Monday, February 17 –
Presidents' Day – No School

Wednesday, February 19 –
Steven Brown Commemorative Bike Day –
4 years old classes

Thursday, February 20 – Steven Brown
Commemorative Bike Day – 3 years old classes

Friday, February 28 – Grandparents' Shabbat –
4 years old classes

Tot Shabbats

Pajama Tot Shabbat

Friday, January 10 • 6:00pm

Dress in your most comfortable jammies, bring your favorite lovey, and enjoy a delicious pizza dinner & family-friendly Shabbat service. After the service and oneg, join Miss Sam & Miss Ronni for a story time treat in our Kehillah Center!

Oneg to be sponsored by Dancing Dolphins (115) & Busy Bees (116).



Havdalah in the Garden

Saturday, February 22 • 4:00-6:00pm

Delray Beach Children's Garden

Indulge your child's need to have a hands-on experience in a lush, natural environment while you have the opportunity to get together in a magical setting.

Price of \$36/immediate family (up to 5 individuals) includes a garden tour, besamim making (Havdalah spice pouch), light hors d'oeuvres for adults and children, Havdalah service, and a donation to the garden.



Parenthood

Saturday, January 11
Parents' Night Out – Bounce in
Delray Beach – 7:00-10:00pm

Thursday, January 2
Parenthood Meeting – 7:30pm

Wednesday, February 19
Parenthood Meeting – 7:30pm

Thursday, February 27
Girls' Night Out



Beth El
Early Learning Center

★ PARENTHOOD PRESENTS ★

**FAMILY FUN
DAY 2025**

SATURDAY, JANUARY 25, 2025
CARNIVAL IN THE BIG BACKYARD
9 AM - 1 PM



HEATHER EREZ
DIRECTOR OF YOUTH
EDUCATION AND
ENGAGEMENT
HErez@tbeboca.org

Israel Education in the Reform Movement

For the past few months, I have been working alongside my colleagues from around the country to roll out Israel Education Learning Outcomes. These outcomes have been unanimously endorsed by the aleph bet (alphabet) soup of the Reform movement, including a broad range of educators, the Reform Movement (URJ), both professional associations of our rabbis and cantors, and the reform movement's seminary (HUC-JIR).

What makes me proud is that we have already been working with many of these Israel education outcomes in our religious school and as professional development with our faculty, long before the atrocities we faced last year on October 7, 2023. One of the outcomes is that our learners are able to articulate Israel's (Zion) role as a central force in the narrative of the Jewish people, from Biblical times to the present. Starting in Kindergarten, our students are hearing our Torah stories and our faculty are actively pointing out how and when they are connected to the Land of Israel. This continues all the way through high school, with the text students engage in. This also happens in the reverse direction. Our Beyachad Teen class studied Israel's Declaration of Independence, where we saw that even in the official

documents of the state, there were ties to the land and our yearning to return and be present in our ancient homeland.

Learning about one's connection to Israel and Jewish Peoplehood is not a clear-cut path and each person navigates that journey differently. Testing students on geography and dates is no longer the focus of Israel education. While it could prove useful to know what year the Second Temple was destroyed in Jerusalem (70CE), our curriculum instead weaves our connection to Israel throughout our weekly lessons. Our success is seen on our college campuses when Temple Beth El alumni come back and tell us how they stand up for Israel and themselves, in and out of the classrooms. They feel connected to Israel and know where to go for reliable resources.

The world is changing, and the way we educate our students must also change, to be sure our values carry on. I look forward to engaging with our community and our school to unpack these educational learning outcomes. Along with these outcomes, may our students continue to evolve and deepen our understanding and connections to the land of Israel and the Jewish people.

Religious School Events

Nova Exhibition in Miami

Beth El Teens: 10th-12th Graders and College Students

Sunday, January 5

1:30pm-6:00pm

Join Temple Beth El clergy for a powerful afternoon

A bus will be available to and from the Schaefer Family Campus

RSVP required.

Miami Heat vs San Antonio Spurs

Beth El Teens: Grades 8-12

Sunday, January 19

1:00pm

Beck Family Campus

RSVP Required.



Cake Decorating: Tribe Zebulon

Sunday, February 2

12:00pm

Beck Family Campus



Color War: Tribe Ephraim

Sunday, February 9

12:00pm

Beck Family Campus

Tu B'Shevat Planting Party:

Tribe Menashe

Sunday, February 16

12:00pm

Beck Family Campus

Yoga & Games: Kindergarten Tribe

Sunday, February 23

12:00pm

Beck Family Campus

Tie Dye: Tribe Benjamin

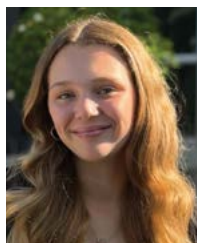
Sunday, February 23

12:00pm

Beck Family Campus



B'nai mitzvah



Leah Platzek



Jesse Edelson



Amy Werner



Sadie Markelis



Joshua Sackel



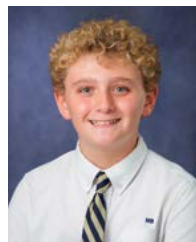
Louis Gellibert



Addison Frankel



Spencer Frankel



Jonah Kreiger



David Diaz-Padua



Skylar Freedman



Miles Kaminsky



Victoria Lynn



Declan Gluck



Layla Gerstin

Leah Platzek
Daughter of Claire and Steven Platzek
January 4 at 11:30am

Jesse Edelson
Son of Brandey and Ryan Edelson
January 11 at 9:00am

Amy Werner
Daughter of Luisa and Mark Werner
January 11 at 11:30am

Sadie Markelis
Daughter of Bess and Pablo Markelis
January 11 at 5:30pm

Joshua Sackel
Son of Joanna and Matthew Sackel
January 18 at 10:45am

Louis Gellibert
Son of Randi Gellibert
January 18 at 2:00pm

Addison Frankel
Daughter of Jennifer and Brett Frankel
January 18 at 5:30pm

Spencer Frankel
Son of Jennifer and Brett Frankel
January 18 at 5:30pm

Jonah Kreiger
Son of Laura and David Kreiger
January 25 at 10:45am

David Diaz-Padua
Son of Ignacio and Daniela Diaz-Padua
January 25 at 11:30am

Skylar Freedman
Daughter of Diane and Justin Freedman
February 1 at 6:00pm

Miles Kaminsky
Son of Linda and Seth Kaminsky
February 8 at 11:30am

Victoria Lynn
Daughter of Nicole and Noah Leon
February 8 at 6:00pm

Declan Gluck
Son of Elizabeth and Evan Gluck
February 15 at 9:00am

Layla Gerstin
Daughter of Ari Gerstin
and Erica Gerstin z"l
February 22 at 6:00pm



Teen Songleading Collective

WITH CANTOR JAKE HARRIS

Rehearsals on Tuesdays, 5:30pm – 7:00pm

Beck Family Campus

Register at tbebo.ca.org/teen-music

All musical teens are welcome to join the collective. Topics covered will include guitar fundamentals, basics of singing, and building community through music. Be a leader in our community and receive community service hours for your contribution. Dinner will be served.



BY **LESLIE VISELMAN**
SISTERHOOD PRESIDENT
Sisterhood@tbeoca.org

As we step into 2025, Sisterhood reflects with gratitude on the past year and excitement for the months ahead. Thank you for being part of a vibrant community that celebrates, supports, and serves our congregation.

A heartfelt thank you to everyone who joined us for the luncheon with Erica Diamond. Hosting three-hundred women for a day of connection and purpose was truly special. Our incredible co-chairs, Amy Appel and Mara Shapiro, along with their dedicated team of volunteers, worked tirelessly to bring us an exceptional boutique to shop,

exciting raffles to win, stunning décor, and a memorable program for everyone to enjoy.

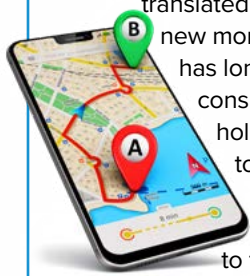
Special thanks to our generous sponsors. Your contributions directly support Temple Beth El's initiatives, including the Scholarship Fund and Emergency Medical Assistance (EMA), providing funding for safe and legal abortions. Your generosity ensures the continued success of programs that make a real difference.

Here's to an impactful and joyful year together!

ROSH CHODESH DOES ANYBODY HAVE A MAP?

Using Jewish Teachings and Prayer as a Road Map to Understanding Ourselves and the World Around Us

**One Sunday a Month from
9:15am – 11:00am
January 5, February 2,
March 2, April 20, May 25
Lake Biwa Pavilion
4000 Morikami Park Rd.
Please register at
tbeoca.org/rosh-chodesh**



Rosh Chodesh, literally translated as, "the new month," has long been considered a holiday gifted to women - when we take time to focus on our own personal growth. Join us to connect with other women, grow and reflect on the month that has passed, breathe, and give yourself the gift of time to focus your intentions for the month ahead. All women are welcome and refreshments will be served.



Thank you to our generous Sisterhood Luncheon Sponsors

Patty Beck
Emily Cohen
Susan Goldstein
Shelley Marcus
Mara Shapiro
Jan Lev
Janet Serle
Margie Plough
Debbie Averbook
Cantor Lori Brock
Dana Brown
Andrea Corn
Irene Epstein
Sandi Fried
Amandah Goldsmith
Diane Hilton
Rebecca Klasfeld
Ellen Koppelman
Aimee Levin
Barbara Lewin
Pamela Nadler
Madeline Nappen
Natalie Pelavin
Susan Podolsky
Dawn Pollay
Lisa Ponczek
Eleanor Rassler
Ellie Roth
Linda Schmier
Sharyn Schneiderman
Sandra Schwab
Shari Schwamm
Leslie Viselman
Wendy Walin



Sharsheret Pink Dragon Mah Jongg Tournament



Tuesday, January 28
9:00am - 4:00pm
Schaefer Family Campus
\$72
Last day to register is
Tuesday, January 14
Open to the public

Enjoy door prizes, cash prizes for finalists, 50/50 raffle and vendors. Social play also available. Light breakfast, lunch and snacks to be served. For more information, please contact Sara Walsh at swalsh@sharsheret.org. RSVP at tbeboca.org/pinkdragon



Bingorita
Thursday, February 20

Sisterhood Shabbat
Friday, February 28

Brotherhood and
Sisterhood Passover
Experience
Wednesday, April 2

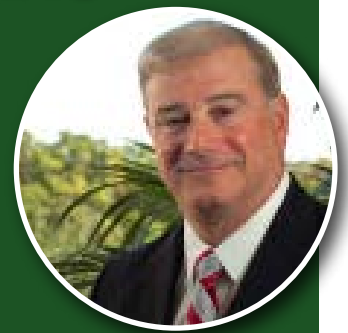


JOE GUDEMA
AND MICHAEL KIEFFER
BROTHERHOOD
CO-PRESIDENTS
Brotherhood@tbeboca.org

BROTHERHOOD GOLF OUTING

Honoring **TOM KAPLAN**

MONDAY, JANUARY 27, 2025
BOCA RIO GOLF CLUB



Join us for our most successful fundraising endeavor of the year as we honor Tom Kaplan and support Temple Beth El's Endowment Fund, aimed at securing the long-term financial sustainability of our temple. Additional proceeds help provide scholarships and assistance to members of our community in need.

What's in store?

- 18 Holes on the luxurious Boca Rio Golf Course
- Gourmet Lunch
- Player Gift
- Cocktails and Awards Dinner
- Silent Auction & Raffles
- Golf Competitions, including Hole-in-One, Putting, Longest Drive, Closest to the Pin, and the return of the Golf Cannon!

Packages Available:

Individual Golfer including Gourmet Lunch & Cocktail and Awards Dinner: **\$550**
Foursome Package including Half Page Ad and Tee Sign: **\$2,750**
Cocktails and Awards Dinner Only: **\$150**

For sponsorship opportunities or more information, please contact Jonathan Levin, Golf Committee Chair, at brotherhood@tbeboca.org or 917-847-9911.

Registration is open to the entire community with participation and sponsorship opportunities for golfers and non-golfers.

Register and Sponsorships at
tbebrotherhoodgolf.com

DONATIONS & DEDICATIONS

as of September 16, 2024 – November 14, 2024

Annual Giving

Jeffrey Adler
Geffen & Michael Altschuler
Donna & Stephen Appel
Ellen & Daniel Arkush
Dori Barenholtz
Robin & Neil Baritz
Leslie & Michael Baron
Michael W. Bass
Louis Beck
Susan Beil & Jim Reynolds
Annie & Michael Bergner
Rhonda Bernstein
Shelli & Gary Bettman
Elsie & Jack Blanco
Dale & Tom Blank
Lauren & Roger Blinder
Ellen & Howard Bolner
Marilyn & Michael Brahms
Cantor Lori & George Brock
Gregory Brown
Freyda & Ed z"l Burns
Roberta Caplan
Stephanie & Richard Chestnov
Brian Coleman
Elaine Colker
Felicia Cooper
Phyllis & Howard Cordover
Alene & Richard Court
Brenda & Howard Derector
Stacey & Scott Derector
Roberta Deutsch
Judi Donoff
Amy Dweck
Dana Egert
Robin Eisenberg & Andrea Broido
Tara & Jacques Elmaleh
Rebecca Elman & Andrew Levy
Camille Creary-Engelhardt & Peter Engelhardt
Elaine Epstein
Gary Evans
Theda Febesh
Barbara & Leonard Feld
Elise Feldman
Roberta & Alan Feldscher
Karen Feller
Maddi & Wes Finch
Susan Cohen-Fischer & Steven Fischer
Beth Fisher
Ina Rae & Neil Fox
Sandi & Ed Fried
Tammy & Steve Friedman
Sheryl & Martin Fromowitz
Jessica Furr
Sheila & Robert Furr
Rani Garfinkle
Carol & David Gart
Celine Geck & Andrew Lerner
Ira Gerber
Elaine & Herb Gimelstob
Myrna & Myron Ginsberg
Stefanie Goldberg & George Gonzalez, Jr.
Jason Goldman
Robin Goldstein & Joe Wasch
David Gottlieb

Gloria Gray & Melvyn Markowitz
Ilene Greenberg
Francine & Ronald Greenblatt
Peter Grossman
Diana & Jeffrey Grubman
Howard Guggenheim
Arthur Gutterman
Gutterman's, Inc.
Paula & Henry Harman
Melanie & David Hecker
Sylvie Heyman
Diane & Jeffrey Hilton
Bonnie & Herb Hirsch
Carl Hochheiser
Yolanda & Richard Holiber
Ashley Holland & Blake Fishman
Roslyn Hopin
Ellen & David Horowitz
Allison & Ian Horowitz
Sloane & Harris Howard
Rachel Matz Hunter & Robert Hunter
Betsy & Bryan Isackson
Deborah & Herbert Jackman
Deborah & Michael Jacobs
Ben Kanter
Burton Katz
Judith Kaye
Amy & Andy Kent
Libby Kirsch
Samantha Klasfeld
Beth & Ari Kornhaber
Maxine Kornitzer
Merrill & Laurence Kotok
Talya & Warren Kupin
Julie & Mitchell Kurman
Toby & Murray Lacher
Charna Larkin
Melvin Lazar
Peter Lazarus
Wendy & Wayne Legum
Jaclyn & Jonathan Leitner
Holly & Jeffrey Levine
Sharon Levine
Sue Lichtenstein
Rosy Lofler
Lysa Long Burke
Richard Lubell
Carol Lustig
Heather Bennett-Magod & Ira Magod
Julie & Jeffrey Mandel
E.J. & Steve Manton
Jacqueline & Matthew Markoff
Irene & Leslie Martin
Sheryl & Rollie Martin
Christy McElhaney & Mark Sunshine
Ilyne Mendelson & Steve Terk
Michelle Merson & Jeffrey Marwil
Elliott Messing
Diane & Steven Michaels
Randi Miletsky
Karen Mintz
Cindy Katz Morton & Duncan Morton
Judy & Gary Nath
Nicole & Jason Neimark
Lottie & Erik Nilsen
Janice & Abraham Obuchowski

Randi & Daniel Paul-Heskins
Alicia & Randall Peck
Natalie Pelavin
David Piper
Robert Plafsky
Margie & Maurice Plough
Alan Ponce
Laura & Adrian Rabinowicz
Barbara Gianat & Barbara Rachells
Nicole & Alan Raines
Robert Reichman
Lisa & Alan Reichstein
Susan & Frank Richard
Arleen Roberts
Norman Rose
Lindy & Daniel Rosenberg
Debra & Larry Rosenblum
Cindy Rosenthal
Meryl & Bruce Rosenwater
Jenny & Adam Rothstein
Risa & Ronald Rubin
Barbara & Howard Schnoll
Jill & Jan Schuman
Beth & Ed Schwartz
Elaine & Jay Schwartz
Tracey & Jay Schwartz
Maria & Dov Seidman
Susan Selnick & Jeffrey Gordon
Adam Shapiro
Stacey & Craig Shapiro
Marilyn & Frederick Shapiro
Diane & Lawrence Sharnak
Ronni Shelley
Julie & David Shonkoff
Elizabeth & Adam Shonson
Gina & Greg Shugar
Madeleine Siegel
Betsy & Richard Siegel
Sandy Simon
Anna & Michael Singer
Donna Slotnick
Sabrina & Jonathan Smith
Lois & Geoffrey Solomon
Sandi & Peter Solomon
Irene Spiegel
Rebecca & James Spooner
Carol Stein
Donna Stein
Carole Steinberg
Sophia Stone
Jensen Strandberg & Ben Keusch
Deborah & Marc Straus
Bob Sugarman
Janet & Allan Sussberg
Susan & Mark Tabor
Rasheena & David Taub
Joyce & Jerome Teger
Danielle & Hayden Trepeck
Greg Turetzky
Rebecca Arliss-Turetzky & Martin Turetzky
Sharon Wasserman
Vera Weiler
Monica & Andrew Weinberg
Doris Weingrad
Leidy & David Weinstein
Tracy & David Weinstein

BUY - SELL - TRADE - APPRAISE



Scott M. Goodman

5030 Champion Blvd. Suite G11

Boca Raton, FL 33496

Private Collector Since 1984
of All Baseball Cards and Memorabilia



561-703-4322

thegoods11@aol.com

ONE OF A KIND COLLECTIBLES & FREE APPRAISALS

**Suffering from BPH?
GET YOUR LIFE BACK!**

**Prostate Artery Embolization-PAE
Shrinks the prostate!**



**PAE is a minimally invasive procedure
performed in office
Fast recovery
No incisions
No catheter**



William Julien, MD

Book an appointment 954 725-4141

SFVA.COM

SOUTH FLORIDA

VASCULAR ASSOCIATES

Leading Change in Vascular Care



DONATIONS & DEDICATIONS

Seth Weinstein
Gail Weisbaum
Robyn & Scott Wellikoff
Serena & Richard Werber
Leslie & Justin Wheatley
Judy Whitman
Linda & Eric Workman
Bonnie & Stephen Yaffe
David Zoberg

in appreciation of:

the Bimah honors for Rosh Hashanah 5785
by Andrea & Gerald Goldberg
reciprocity tickets for Yom Kippur
by Phyllis Goldberg
Leslie Almond by Bart Ostroff

in celebration of:

Cantor Jake Harris by Marcia & William Harris

in honor of:

George Brenner by Maxine Brenner
our High Holy Day reading honors by
Lisa Swartz & Mitchell Gross

in memory of:

Rose & Jesse Goldberg by Harriet Cook
Joseph Goldman, Rachel Goodman, &
Elaine Bell by Harold Goodman
Chet Kay by Elaine & Peter Kaplan
Herbert & Sylvia by Bonnie & Bradley Kirsch
Adrienne Goldbaum by Michelle
Merson & Jeffrey Marwil
Judith Sickles by Bonnie Pantel
Bernice Hoenig by Loren & Matthew Rice
Hanita Schreiber by Doris Schwartz
my parents by Boris Vishnevskine

in support of:

Temple Beth El by Kathie & Donald Kaplan
Temple Beth El by Joyce Marks

to thank:

Temple Beth El for High Holy Day services
by Maria & Barry Cohen
the temple for providing virtual services for High
Holy Days by Madeline & Arnold Siegel

to welcome:

Rabbi Laila Haas to Temple Beth El by
Martha & David Goodkin

with gratitude:

for welcoming us to the temple for High Holy Day
services by Susan Fellman & Steve Greenstein
for Temple Beth El's very enjoyable virtual High
Holy Day services by Fredric Fine
for Temple Beth El by Roberta & Jacob Kalmanson

Art, Music & Culture Endowment Fund

in celebration of:

the installation of Cantor Jake Harris
by Robin & Lee Kantor

Disaster Relief Fund

To support those affected by Hurricanes Milton & Helene
Ricki & Milton Barbarosh
Leslie & Michael Baron

Fran Belasco
Karen & Richard Benrubi
Ellen & David Bernstein
Marjorie & Stuart Blacker
Jill & Jonathan Block
Ellen & Howard Bolner
Dana Brown
Emily & Richard Cohen
Andrea Corn
Dana Egert
Rebecca Elman & Andrew Levy
Carol & David Gart
Suzy Geller
Gabrielle & Michael Glasser
Debby Glick
Susan & Richard Goldstein
Laurie & Jonathan Greene
Marla & Gary Greenspan
Eric Gottlieb & David Hanowitz
Denise & Bruce Harwin
Sylvie Heyman
Cindy-Jo & Paul Homer
Grace & Jack Jaiven
Linda Jaro
Barbara & Russel Johnston
Felisa Kahn
Susan & Steven Kessler
Debra Kimmel & Ian Nestler
Sue & Scott Krieger
Jay Leicher
Jan & Allen Lev
Lysa Long Burke
Stacey & George Luck
Carol Lustig
Pamela & Paul Matsil
Caryn & Peter Mintz
Elizabeth & Scott Paskal
Shelly Preziosi
Heather Redlich
Jacquelyn & Louis Robinson
Mindy Jaffe-Rogers & Ken Rogers
Janet & Laurence Rosenblatt
Jeffrey Rosenthal & Richard Paresky
Jenny & Adam Rothstein
Barbara & Paul Knapp
Robyn & Neil Schiller
Diane Schmier
Sandy & Tadd Schwab
Samantha & Devon Shalmi
Julie & David Shonkoff
Madeleine Siegel
Nancy & Barry Sinrod
Susan Sosin
Rona & Sandy Steinberg
Janet & Allan Sussberg
Pam Tinkham
Roselyn Tucker
Sharon Wasserman
Linda & Dennis Weiss
Meredith & Carmel Winkler
Orna & Larry Wiseman
Caron Shutan & Jay Yospe

Early Childhood Scholarship Fund

in memory of:

Judith Sickles by Jill & Alan Slootsky

Friends of Music & the Arts

in memory of:

Joanne Romano by Susan & Barry Podolsky

General Fund

Karen & Daniel Davis
Michael Diamond
Margaret Eichler
Iris Fisher
Kim & James Price
Richard Schreiber
Arthur Springer
Albert Ugelow
Marilyn & Jay Weinberg

in celebration of:

Josh & Hannah Daniels' wedding by Barry Silberman

in honor of:

Herbert & Hannah Davis by Sharon Eichner
Ivy, Steve, Julianna & Lance Kaufman by
Shawn & Jonathan Jackson
Margaret Kottler's birthday by Jo & Jerry Robbins
the chair yoga class by Anonymous
Sonny Thal's 90th birthday by Carole Steinberg

in memory of:

Chester Kaye by Judith Beiner
Judith Sickles by Murray Brown
Barry Cohen by Amy & Steve Cohen
Judith Sickles by Suzanne & Jeff Deutch
David Heyman by Eric Diton
Rabbi Abraham & Yetta Ezring by Sheldon Ezring
Chester Kay by Karol & Robert Linton
Steven Neuman by Linda & Robert Schmier
Jeffrey Sandelman by Stephanie & Steven Schuster

on the occasion of:

the High Holy Days by Sidney Bernstein

with gratitude:

for virtual services during such a difficult
time in the world by Carol Itskowitz

The Giving Tree

Joan Bader
Hope & Jeff Barton
Marjorie Berg
Kristine & Stanley Black
Phyllis Brucker
Nancy & David Carver
Judith Chason
Marie DuPont-Roseberg
Margaret Eichler
Irene & Merrill Epstein
Aline Fisher
Alexandra & Scott Fraser
Tracy Anne & Eli Fuchs
Susie & Justin Goldberg
Martha & David Goodkin
Gladys & Arnold Granet
Grace & Jack Jaiven
Barbara & Russel Johnston
Suzanne & Jeffrey Katz

Does your Ob-Gyn value an integrated approach to your care?

Tired of not feeling your best?

Want to be as healthy as you can be but don't know where to start?

CALL 561-826-3800

We answer with individualized care for women at all stages of life.



TERRENCE W. HARRIS, MD
WOMEN'S WELLNESS EXPERT



**WOMEN'S
WELLNESS CENTER**

OBSTETRICS | GYNECOLOGY | WELLNESS

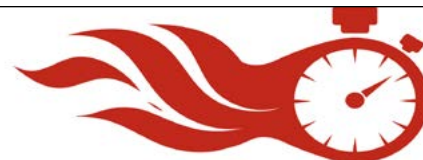


Call 561-826-3800
www.harrisobgyn.com

VISIT HARRISOBGYN.COM OR CALL. WE CAN HELP.
2500 North Military Trail Suite 111 Boca Raton, Florida 33431



Velocity Transport & Logistics Corporation
The Nation's Premier Auto Transporter
Convenient, Fast, Safe, & Fully Insured
Mention TBE4U and save 10%



VELOCITY TRANSPORT & LOGISTICS CORP
1-866-488-5744



Call Aaron Strauss
727-326-8532
AS@VTLSHIPS.COM
www.vtlships.com

DONATIONS & DEDICATIONS

Jennifer & Josh Kramer
Cheryl Lapin
Natalie Leder
Sarina & Jerry Lind
Rosy Lofer
Rachel & Eric Marbach
Madeline Nappen
Barbara Gianat & Barbara Rachells
Carole & Ron Ries
Cindy Rosenthal
Laura Ruben
Alison & Daniel Rubin
Angela Salmon & Scott Stone
Linda Seltzer
Janet Serle & Ira Malin
Ronni Shelley
Susan Sosin
Serena & Richard Werber

in honor of:

our 45th wedding anniversary by
Ricki & Milton Barbarosh
the B'nai Mitzvah of Emma & Zach by
Elaine & Morton Erenstein
Israel Bonds Palm Beach Unity for Israel honorees,
Elinor and Jay Josephson by Aline Fisher
Alan, Lauren, Stella & Hailey Gross
by Lissa & Larry Gross
the hard work and dedication of Temple
Beth El Sisterhood by Ellie Roth

in memory of:

Nancy Emerman by Barbara Brietstein
Myra Singer by Helene & Jay Eichler
Jim Alexander by Crystal Favareille
Ron Coker by Jan Fine
David Heyman by Aline Fisher
Judith Sickles by Aline Fisher
Bruce Roth by Aline Fisher
Barry Glick by Debby Glick
Joanne Romano by Haith & Company, Inc.
Myra Singer by Cindy-Jo & Paul Homer
Bruce Roth by Lisa McNerney
Alice Nast Statland by Barbara & Paul Knapp
Paul (Duke) Richard by Susan Schulz
Michael Clayton by Leslie Schwam
Myra Singer by Lori & Jeremy Singer

in support of:

Lauren Gross & family by Jeffrey Gross

on the occasion of:

the upcoming Bat Mitzvah of our granddaughter,
Hannah by Roberta & Lorrie Shafer

to thank:

Penny & David Klein for their hospitality
by Stephanie Rudin

with gratitude:

for your virtual Shabbat services by Joan Parness

Glenn & Laurie Borden Endowment Fund

Laurie & Glenn Borden

Jan and Allen Lev Endowment Fund

in memory of:

David Heyman by Patti Lieb

Leonard & Ursula Hess Endowment Fund

in memory of:

Walter Cohen by Ursula & Leonard Hess

Music Fund

in appreciation of:

Cantor Jake Harris by Jody & Marc Greenspon

in celebration of:

the consecration of Cantor Jake Harris
by Judith Harris Auderieth

in honor of:

the consecration of Cantor Jake Harris
by Helene & Jay Eichler
Cantor Jake Harris by Marcia Gerson
& Scott Glincher
the consecration of Cantor Jake Harris by Rosy Lofer

in memory of:

Joanne Romano by Carol & Neil Niren

Myra R. Schwartz Cantorial Music Fund

in honor of:

Marcia Harris' birthday by Andrea Harris
Cantor Lori Brock, Cantorial Soloist
Michelle Auslander Cohen, & Cantor
Jake Harris by Susan & Joel Ivers

in memory of:

Bernice Hoenig by The Wizov family

in support of:

Cantor Lori Brock by Cristina & Donald Keusch

Rabbis' Discretionary Fund

Michael Barkai
Celine Geck & Andrew Lerner
Maxine Glass
Mark Kamen
Judith Kornitsky
Brooke & David Lukes
Terri & Russell Meyers
Howard Nadel
Jami & Elliot Rice
Bernard Rose
Marilyn & Frederick Shapiro
Mindy Smith
Frank Surnamer
Minelle & Alfredo Tendler
Sonny Thal

in appreciation of:

our Aliyah during Rosh Hashanah services by
Dori Barenholtz & Houston Barenholtz
the clergy's support during my illness
by Stephanie Chestnov
Rabbi Elana Rabishaw for a beautiful
memorial service by Patty Kaufman

Rabbi Dan Levin leading the unveiling service
for my mother by Adrian Minor

in celebration of:

the B'nai Mitzvah of Zoey & Caleb
by Barbara Brietstein
Susan Ivers' conversion to Judaism by
Ilyne Mendelson & Steve Terk
Sonny Thal's 90th birthday by Lorraine Natkin

in honor of:

the clergy for their support on the passing of my
brother, Bruce Roth by Betsy Blechman
the birth of our granddaughter, Mallory Claudia
Epstein by Irene & Merrill Epstein
Rabbi Dan Levin by Theda Febesh
Wes & Maddi Finch by Louise & David Galpern
Rabbi Dan Levin by Elissa Hecht
Rabbi Dan Levin, Rabbi Greg Weisman, Rabbi
Elana Rabishaw, and Rabbi Laila Haas for
immeasurable support, encouragement,
and wisdom on the occasion of Susan's
conversion by Susan & Joel Ivers
Linda & Dennis Weiss by Ann Weinwurm

in memory of:

Bruce Roth by Ann Lois Ballon
Bruce Roth by Ricki & Milton Barbarosh
Penny Walzer by The Berkowitz & Walzer families
David Heyman by Barbara Blakeslee
Helen & Jerome Friedman by Barbara Brietstein
Dr. Malcolm Ginnis by Donna Brovender
Harriet Richman by Elaine Epstein
Michael Costin by Kathy Freeman-Costin
Bernice Hoenig by Peggy Gelman
Caren Treiser by Jody & Marc Greenspon
Bernice Hoenig by Evelyn Hasson
Harvey Lifton by Susan & Alan Jacobs
Carole Romer by Jan & Allen Lev
Linda Rose by Jan & Allen Lev
Carole Romer by Ilyne Mendelson & Steve Terk
Chet Kay by Corin Neustein
Bruce Roth by Carol & Neil Niren
Carole Romer by Susan & Barry Podolsky
Dave Heyman by Nancy Powers
Carole Romer by Lisajane & Kevin Romer
Roberta Meyers by Lisajane & Kevin Romer
Sol Sackel by Howard Sackel
Chester Kay by Merle & Joel Schneider
Chet Kay by Shirley & Allan Solomon
Tully Schuster by Michael Solomon
Hyman Taub by Ronna & Marc Taub
Esther Berman by Ronna & Marc Taub
Dave Heyman by Mark Tobin
Bruce Roth by Robin & Gary Warren
Stephen Winig by Shirley Weisman

on the occasion of:

Susan Ivers' conversion by Andrea Corn
Susan Ivers' conversion by Jan & Allen Lev
Mia Sylvie Shack's baby naming by
Jourdan & Steven Shack

to thank:

Rabbi Dan Levin for officiating at my father and
brother's unveiling by Marla Kaminsky

Can't Hear on the Phone?

Get a **NO-COST** CapTel Captioned Telephone!

The CapTel® Captioned Telephone shows captions of everything a caller says, letting you read anything you cannot hear over the phone. People with hearing loss qualify to receive a CapTel phone at no cost — all you need is an Internet connection! Contact your local Out-reach Educator to get started.

Mickie Oliva
954-415-9469
mickie.oliva@oeius.org

CapTel®
Captioned Telephone

No
Landline
Needed!



FEDERAL LAW PROHIBITS ANYONE BUT REGISTERED USERS WITH HEARING LOSS FROM USING INTERNET PROTOCOL (IP) CAPTIONED TELEPHONES WITH THE CAPTIONS TURNED ON. Advanced speech recognition software is used to process calls, and, in certain circumstances, a live communications assistant may be included on the call. There is a cost for each minute of captions generated, paid from a federally administered fund. No cost is passed on to the CapTel user for using the service. CapTel captioning service is intended exclusively for individuals with hearing loss. CapTel® is a registered trademark of Ultratec, Inc. (v1.7 01-23)



Trusted, Comfortable and Caring Dentistry

- Highest Quality Dental Care
- State of the Art Digital Imaging
- Experienced and Caring Staff

Five Stars ★★★★★ on **Google** and **yelp**



We are currently accepting new patients so please call us today!

D.A. ROLFE, DDS, PA

333 Camino Gardens Boulevard • Boca Raton Florida 33422
www.DrRolfe.com • Phone: 561.395.4500

Proudly caring for Temple Beth El families for over 20 years!

DOUGLAS A ROLFE, DDS, PA COSMETIC AND FAMILY DENTISTRY

ADA American Dental Association®
America's leading advocate for oral health

AAO American Academy
of Oral and Maxillofacial Surgery

DONATIONS & DEDICATIONS

Rabbi Laila Haas for leading Sophie Schiff's beautiful baby naming ceremony by Stephanie & Steven Schiff

with gratitude:

for Rabbi Dan Levin by Sindi & Michael Bass
to Rabbi Laila Haas for her care, concern, and prayers pre-and post-surgery by Andrea Corn
to Rabbi Dan Levin for his generous sharing of Torah, wisdom, and compassion by Andrea Corn
to Rabbi Laila Haas for her time and concern at my husband's interment by Barbara Janower
to Rabbi Greg Weisman for his incredible support of our family during this difficult time by Joanna & Matthew Sackel

Samuel & Mollie Luks Endowment for Special Needs Education

in honor of:

Karen Kaplan's birthday by Marilyn & Mordechai Adani
Fran Weinberg's birthday by Marilyn & Mordechai Adani
Karen Kaplan's birthday by Barbara & Clifford Gerstenhaber
Fran Weinberg's birthday by Barbara & Clifford Gerstenhaber
Fran Weinberg by Janet & Herbert Krane

Sisterhood Contribution

Ivy & Steve Kaufman
Judi Zimmermann

on the occasion of:

the birth of Mallory Claudia Epstein by Debi & Herbert Jackman

Steve Brown Endowment Fund

in memory of:

Bruce Roth by Pam Nadler & Mark Sickles

Susan & Barry Podolsky Special Needs Fund

in memory of:

Bruce Roth by Freyda & Ed z"l Burns

Tzedakah Fund

Marie DuPont-Roseberg
Robert Finkelstein
Rachel Matz Hunter & Robert Hunter
Joshua McCoy
Stephen D. Nechtow

in honor of:

Rabbi Laila Haas' consecration by Helene & Jay Eichler
Sienna & Presley Antman by Dee Walker, Jam Trust

Yahrzeit Fund

in appreciation of:

Rabbi Greg Weisman's kindness by Leslie Schwam

in memory of:

Yvette Abejean & Wendell Ellis by Jannette Abejean
Isaias Kaplun & Fanny Kaplun by Liliana Abramson
Joseph Kerman by Julie Adelman
Gertrude Kerman Furman by Julie Adelman
Elliott Adelman by Terry & Sheldon Adelman
Robert Frank by Priscilla & Leonard Adler
Joseph Altner by Sandi & Robert Altner
Joanna Altner by Sandi & Robert Altner
Norma Dulman by Amy & Eliot Appel
Marvin Sheinker by Stuart Appel
Charles Seigal by Sheila Asher
Fred Axelband by Ann Axelband
Abraham Baron by Leslie & Michael Baron
Sylvia & Philip Goldberg by Stan Bass
Mordechai Bogushov by Anya Baum
Stephen Beiner by Judith Beiner
Ruth Halperin by Susan Bell
Herbert Feldman by Susan & Michael Benenson
Evelyn Manning by Linda & William Berger
Herman Berger by Linda & William Berger
Hyman Berkovitz by Stan Berkovitz & family
Norman Berman by Iris, Brad & Scott Berman
Ira W. Berman by Barbara & Jonathan Berman
Eleanor S. Weiner by Shelli & Gary Bettman
Michael Blackman by Judith Blackman
Sylvia Fink by Barbara Blakeslee
David B. Roth by Betsy & David Blechman
Judith Sickles by Betsy & David Blechman
Frank Trestman by Jill & Kevin Brazner
Jarrod Michael Bresky by Andrea & Roy Bresky
Harold Radelinsky, Howard Moss, & Jerry Afromsky by Suzanne & Brian Broad
Jeffrey Sandelman by Justin Brockman
Dolly Brodsky by Bruce Brodsky
Carol Brown by Murray Brown
Shirley Chavis Yahrzeit by Jan & Richard Chavis
Gloria Aizer by Stephanie & Richard Chestnov
S. Solon Cohen by Laurie Cohen & Rick McArdle
Eleanor Rothstein by Elaine Colker
Terry M. Colker by Elaine Colker
Bruce Roth by Julie & Terry Cooper
Marvin Kane by Alene & Richard Court
Samuel Davis by Edythe Davis
Ruth Nogee by Edythe Davis
Gary Majka by Jeffrey Degen
Muriel Degen by Jeffrey Degen
Felicita Rigual by Naomi Denish & Amalio Nieves
Herman Hess by Shirley & Warren Deutsch
Samuel Elman by Edward Elman
Mollie Epstein by Elaine Epstein
Bruce Roth by Irene & Merrill Epstein
Milford Denny Faust by Marlene Faust
Joan Goldstone by Marlene Faust
John Feist by Brian Feist
Ruth Kaye by Diane & Joseph Feldman
Eva Ouziel by Sybil Firestone
Joseph Bergman by Beth Fisher
Howard Glanzman by Amy Glanzman
Francine Richland by Lee Gleeman
Bernard Gamarel & Joseph Goldmann, MD by Judith & Richard Goldmann
Hannah Goldstein by Susan & Richard Goldstein
Richard Goodkin by Martha & David Goodkin
Ruth Tauber by Judith Gordon
Ilene Gordon by Judith Gordon

Adrian Gould by Lew Gould
Donald Glachman by Barbara & Joel Grad
Joel Granet by Gladys & Arnold Granet
Samuel Greenbaum by Frances Greenbaum
Shirley Raff by Amy & Richard Greenblatt
Herbert Schwarz by Laurie & Jonathan Greene
Norman Seltzer by Lauren & Alan Gross
Dr. Chester Kay by Marian & Marvin Gruber
Simon Yespy by Ina Hankin
Ruth Einziger by Sharon Hershkovitz
Sidney Manoff by Robin Hirsch
Joel Holiber by Yolanda & Richard Holiber
Stanley Holz by Ellen & Matthew Holz
Helen Jane Barr Friedman by Cindy-Jo & Paul Homer
Frances N. Barr by Cindy-Jo & Paul Homer
Lynne Jackman by Deborah & Herbert Jackman
Rozzie Fishman by Grace & Jack Jaiven
Frederick Schwartz by Diane Johnson
Sundel (Sonny) Judson by Rita Judson
Louis Kanoff by Susan & Donald Kanoff
Stella Kass by Susan & Donald Kanoff
Dr. Morton Crow, Cecelia S. Crow, Nathan Goldstein, Harry Kaplan & Phyllis Kaplan by Gail & Michael Kaplan
Andrew L. Kasen by Sandra & Stewart Kasen
Chester Kay by Sandra & Stewart Kasen
Lester Kaufman by Karen Kaufman
Yvette Soloway by Judith Kay
Florence Keusch by Cristina & Donald Keusch
Gloria Smith by Bonnie & Bradley Kirsch
Chet Kay by Carla & Jeffrey Klein
Henry Goteiner by Sandy Kovaleik
Michael Kurman by Julie & Mitchell Kurman
Donald Lewis and Edward Goldberg by Michelle & William LaMorte
Randy Lazarus by Peter Lazarus
Harriette Leeper by Brenda & Barry Leeper
Miriam Leeper Kende by Brenda & Barry Leeper
Irving Gefner by Charlotte Leigh
Stanley Leisner by Russell Leisner
Milton Levenson by Ruth Levenson
Jesse Buck by Helen Levin & Lois Levin
Murray Glazer by Janice Levites & Alan Glazer
Anna Lewin by Barbara & Jerry Lewin
Phyllis Weiner by Martin Lifton
Kevin McCoy by Joshua McCoy
Arlene Merson by Michelle Merson & Jeffrey Marwil
Robert M. Merson by Michelle Merson & Jeffrey Marwil
loved ones by Rosalyn & Paul Merzer
Ben Altschule by Hilda Metzger
Jean Weiner by Hilda Metzger
Donald Glachman by Linda & Jay Midwall
Rabbi Arnold Miller & Albert Miller by Aviva Miller
Rebeca Minor by Marjorie & Adrian Minor
Steven Morris by Barbara & Harvey Morris
Theresa Nayman by Maureen & Nicholas Morrone
Carmella Morrone by Maureen & Nicholas Morrone
Emanuel Katz, MD by Judy & Gary Nath
Janet L. Barmak Snyder by Carol & Neil Niren
Marvin Wallach by Jennifer & David Oppenheim
Marvin Pack by Elaine Pack
Martin Mogland by Karen & Mark Panoff
David Heskins by Randi & Daniel Paul-Heskins
Sylvia E. Cohen by Terry Pearl & David Wilson
Albert Katz by Natalie Pelavin



FUNERAL DIRECTORS SINCE 1892

Gutterman Warheit

MEMORIAL
CHAPEL

*One of The Largest
Family Owned & Operated
Jewish Funeral Homes
Since 1892*

Directors:

PHILIP GUTTERMAN • STEVEN KANOWITZ

KENNETH J. LASSMAN

Leading Pre-Arrangement Specialists for all your Medicaid & Estate Planning Needs.
In Home Appointments Available

7240 North Federal Hwy, Boca Raton FL 33487

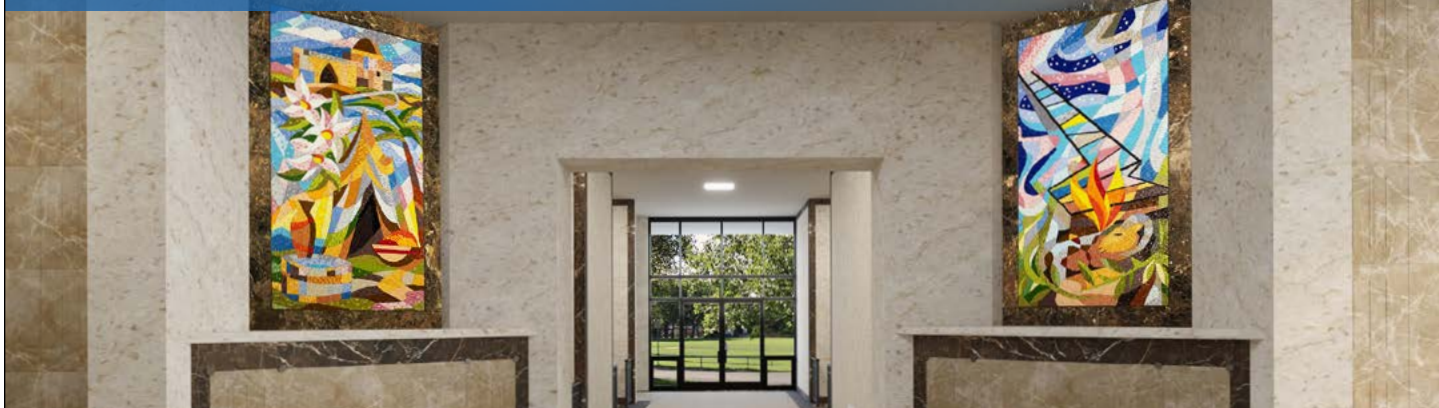
1-800-992-9262

Serving Miami-Dade, Broward, Palm Beach & Martin Counties

*In Greater New York, Guttermans Inc.: ROCKVILLE CENTRE, L.I. 516-764-9400
WOODBURY, L.I. 516-921-5757 • BROOKLYN 718-284-1500*

MONUMENTS BY GUTTERMAN'S www.guttermansinc.com

The Beth El Mausoleum expansion is
now open for sales, with pre-construction
prices that won't last.



Contact Mausoleum Director, **Mike Sirowitz at 561-314-2841**
or **mike@tbeboca.org** to set up an appointment.



333 SW 4th Avenue | Boca Raton, FL 33432 | 561 391 8901
bethelmausoleum.org



For information including
photos and videos, please
visit our website at
bethelmausoleum.org
or scan the QR code.



We Are Family

**Ruth & Norman Rales
Jewish Family Services**

**Always here when
You need Us.**

SERVICES AT A GLANCE

- Behavioral Health Services
- Family & Children's Services
- Food & Financial Assistance
- Philanthropy & Volunteerism
- Senior Services

#WeAreFamily

To learn more, please call (561) 852-3333
www.ralejsfs.org | 21300 Ruth & Baron Coleman Boulevard, Boca Raton, FL 33428

DONATIONS & DEDICATIONS

Rose Mandel by Diane Perkins & Paul Mandel
 Selma Perper by Hedy Perper
 Alan W. Pollak by Sarah Pollak
 Daisy Lewis Straas by Sarah Pollak
 Mildred Straas by Sarah Pollak
 Sylvia Collins & Lillian Pollock by Brenda & Maurice Pollock
 Belle H. Presser by Roberta Presser & Alex Bruner
 Ida Aginsky by Laurie & David Putterman
 Kenneth Rader & Cecelia Rader by Roger Rader
 Elsie Press by Sherry Redler
 Ann Packman by Jocelyn & Gary Reisner
 Simon Leibsohn by Susan & Frank Richard
 Charlotte Ries by Carole & Ron Ries
 Robert Tischio by Dana & Steven Robbins
 Sanford Rosenberg by Sandra Rosenberg
 Zelda King, Emma Vinik, & Richard Vinik by
 Lisa Feldman & Ron Rosenwasser
 Fannie Rubenstein by Myra Rubenstein
 Mel Weiser by The Rubin family
 Pauline & Martin Mellman by Tobe & Joshua Rubin
 Marilyn Drescher by Risa & Ron Rubin
 Melvin Myers by Cynthia & Sheldon Rubin
 Bernice "Bayle" Goldstein by Ellen Rubinstein
 Sy Neuman, Leslie Schmier, & Rose Bobroff
 by Linda & Robert Schmier
 Israel Schnabel by Susan & Gadi Schnabel
 Lillian Holstein by Tadd Schwab
 Anthony Pomponi by David Schwarz
 Gloria Einbinder by Amy & Martin Segel
 David Einbinder by Amy & Martin Segel
 Marvin Sheinker by Melissa & Jack Sheinker
 Alfred J. Sherman by Jill & Douglas Sherman
 Abraham Folbaum by Robert Sherman
 Pearl Yospe by Caron Shutan & Jay Yospe
 Tilla Sherman by Laurie Silvers & Mitchell Rubenstein
 Jacob Rubenstein by Laurie Silvers & Mitchell Rubenstein
 Jerry Singerman by Lynne Singerman
 Harold Lipman by Mimi & Robert Spitz
 Ethel Spitz by Mimi & Robert Spitz
 Paul Steinhaus by Meredith Steinhaus & Robert Williams
 Marilyn Swillinger by Mark Swillinger
 Isidore Swillinger by Mark Swillinger
 Jane Gilbert, Goldie Hantman, & Benjamin
 Hantman by Susan & Mark Tabor
 Jerry Tamarkin by Alece Tamarkin
 Rachel & Arthur Tamchin by Barbara & Leonard Tamchin
 Stephen M. Tamchin by Barbara & Leonard Tamchin
 Bernice Hoenig by Pam Tinkham
 Carol Topper & Craig Topper by Nicole Topper
 Shirley Berglass by Robin Traiger
 Beverly Warheit by Randy & Peter Warheit
 Ben Goldberg by Joan & Thomas Weidenfeld
 Carole Romer by Jill & Paul Weiner
 Jerry Burger by Iris Weingarten
 Rose Schlier by Doris Weingrad
 Lucille Miller by Luisa & Mark Werner
 Larry Whitman & Todd Whitman by Judith Whitman
 Sara Rabinowitz & Abraham Winikoff by Enid & Robert Winikoff
 Ann Winikoff by Enid & Robert Winikoff
 Bernice Hoenig by Fran & Barry Wizov
 Dr. David Wulkan by Darlene, Jessica, and Adam Wulkan
 Hubert Wulkan by Marilyn Wulkan
 Jose Yaker by Rosa & Salomon Yaker
 William Zimmermann by Judi Zimmermann
 Sarah Bregman by Judi Zimmermann
 Stanley Greenberg by Judi Zimmermann



**Local
expertise
with global
reach.**

Let's Connect
ROS Y LOFER
 GLOBAL REAL ESTATE ADVISOR
 786.301.0300
 RLOFER@ONETHETHEBYREALTY.COM
 ROSYLOFER@ONETHETHEBYREALTY.COM

VISIT MY WEBSITE

**Proudly serving your
Southeast Florida
Real Estate Needs and
Desires.**

EXPERIENCE+KNOWLEDGE=RESULTS

**ONE Sotheby's
INTERNATIONAL REALTY**

© 2024 ONE Sotheby's International Realty. All rights reserved. Sotheby's International Realty and the Sotheby's International Realty logo are service marks licensed to Sotheby's International Realty Affiliates, LLC and used under license. ONE Sotheby's International Realty also supports the principles of the United Nations and the Sustainable Development Goals. Each franchise is independently owned and operated. All services or products provided by independently owned and operated franchisees are not provided by, affiliated with or related to Sotheby's International Realty Affiliates LLC or any of its affiliated companies. This advertisement is not intended to constitute an offer of any financial product or service.

Our Congregation Mourns

From October 23, 2024 through December 16, 2024

Marjorie Bromfield, mother of Susan Cohen

Edward Burns*, husband of Freyda Burns

Gerald Dicker, husband of Saralyn Dicker

Morton Erenstein, husband of Elaine Erenstein

Jerrie Jacob Fox, father of David and Melissa Fox,
grandfather of Henry and Simon Fox

Phyllis Fox*, wife of Eugene Fox, mother of Michelle Fox
and grandmother of Jacob & Rachel Hecht

Malcolm Ginnis, father of Eric and Stefanie Ginnis,
grandfather of Brayden, Jordyn and Olivia Ginnis

David Heyman, husband of Sylvie Heyman

Irene Kumin*, mother of Jodi Coren

Harlan Miller, son of Rabbi Arnold z"l and Aviva Miller

Florence Raik, mother of Shelly Weiner

Carole Romer, mother of Kevin and Lisajane Romer,
grandmother of Mathew, Jeffrey and Alexis Romer

Lillian Sackel, grandmother of Matthew and Joanna Sackel,
great-grandmother of Joshua and Michael Sackel

Sonia Sacks, grandmother of Danielle and Rob Butler, great-
grandmother of Sydney and Taylor Butler

Allen Sandler, father of Nancy and Gregory Gefen,
grandfather of Matthew, Abby and Joshua Gefen

Robert Schwartz*, son of Ira Schwartz

Mitchell Wachtel*, son of Lenore Wachtel

Stephen Winig*, husband of Carol Winig

Mazel Tov To

From October 23, 2024 through December 16, 2024

Rachelle Brick and Alec Smith on the birth of their son, Riley Howard Smith

Tara Feld and Joseph Betesh on the birth of their daughter, Madelyn
Lucy Betesh, big brother and sister Zeke and Sydney

Chelsea Goldman and Corey Rosenstrauch on the birth
of their daughter, Emma Jade Rosenstrauch

Stella and Benjamin Horowitz on the birth of their son, Brody Asher Horowitz

Danielle and Todd Latter on the birth of their son, Aiden Myles Latter

Caryn and Peter Mintz on the birth of their grandson, Riley Howard Smith

Annette and Kenneth Mogell on the birth of their
grandson, Cooper Michael Caine

Jessica and Steven Saperstein on the birth of their son, Max Everett Saperstein

Yennifer Agostini and David Kerner on their marriage

Jennifer Blair and Corey Workman on their marriage

Cristina and Donald Keusch on the marriage of their
daughter, Ana Keusch to Maximilian Susskind

Brooke and David Lukes on the marriage of their daughter,
Sophia Lukes to Samuel Rubenstein

Michelle Merson and Jeffrey Marwil on their marriage

Rachel Oleck and Isaac Widmann on their marriage

Mark and Trish Schaum on the marriage of their daughter,
Samantha Schaum to Coleman Ellingsworth

Richard and Cheryl Weinstock on the marriage of their
daughter, Allison Weinstock to Jake Samuelson



Advertise in The Chronicle

For more information and pricing
call Irene Abrams at **561-314-2834**

or email iabrams@tbeoca.org

or visit

tbeoca.org/chronicle-advertising.

Morgan Stanley

The Harbor Financial Group at Morgan Stanley

"Service designed to help affluent investors protect and simplify complex wealth with orchestrated financial care"



Eric Applewhite, CFP®, CPM® Managing Director—Wealth Management, Financial Advisor, Senior Portfolio Management Director;
Howard Guggenheim, Senior Vice President, Wealth Management, Financial Advisor, Senior Portfolio Management Director;
Daniel J. Guggenheim, CFP® Senior Vice President, Financial Advisor;
Jeffrey Guggenheim, Financial Advisor

595 S. Federal Highway, Suite 400
Boca Raton, FL 33432
+1 (561) 393-2035

fa.morganstanley.com/harborfinancialgroup/

L-R: Jeffrey, Howard, Daniel and Eric
CFP Board owns the mark CFP® in the U.S.
Morgan Stanley Smith Barney LLC. Member SIPC.
CRC 6542745 04/24

TEMPLE OFFICERS

Gina Shugar	President
Wendy Walin	Immediate Past President
Jeffrey Katz	Executive VP
Dina Schwartz	VP of Leadership & Governance
Joshua Marcus	VP of Finance
Marcy Schultz	VP of Religious Activities
Danielle Butler	VP Education
Joel Ivers	VP of Development
Susie Siegel	VP of Membership & Engagement
David Friedlander	VP of Social Justice
Brett Schneider	Secretary
Casey Levin	VP of ELC
Bruce Moldow	VP of Mausoleum
Patty Beck	VP at Large

TRUSTEES

Ilyne Mendelson	Kevin Romer
Brooke Perez	Marisa Spiro

LEADERSHIP COUNCIL

Andrea Halpern Altshuler	Michael Kieffer	Maurice Plough, Jr.
Marc Applebaum*	Lauren Koblick	Mark Platt*
Rachel Baron	Jennie Kreger	Barry Podolsky*
Patty Beck*	Steven Lazarus	Morris Robinson
Traci Benedon	Allen Lev	Debbie Rosenblum
Dana Brown	Barbara Leventhal	Marla Schaefer
Ignacio Diaz	Jon Levin	Rabbi Merle Singer
Robin Eisenberg	Rick Levitt	Mark Sunshine*
Aline Fisher	Jonathan Mann	Leslie Viselman
Herbert Gimelstob*	Robyn Marcus	Wendy Walin*
Lisa Glass	Lottie Nilsen	Monica Weinberg
Joe Gudema	Margie Plough	Peter Wohlgelmuth

TEMPLE LEADERS OF BLESSED MEMORY

James B. Baer*	Stanford Hermann	Stanley Rose
Donald Berger	Ida Herst*	Albert Schiff*
Alvin Cohen*	Joseph Q. Kline	Melvin Schwartz*
Frances Cohen	LTC Ben Lake	Bernard H. Shulman*
Stanley Gray*	Cis Rader	Alan H. Weiner*
	Irving Rifkin	

CLERGY

Rabbi Daniel Levin
Rabbi Greg Weisman
Rabbi Laila Haas
Rabbi Elana Rabishaw
Cantor Lori Brock
Cantorial Soloist Michelle Auslander Cohen
Cantor Jake Harris
Rabbi Emeritus Merle Singer, D.P.S., D.H.L., D.D.

SENIOR PROFESSIONAL STAFF

Steve Kaufman, EXECUTIVE DIRECTOR
Cindy Chieffo, CHIEF FINANCIAL OFFICER
Natalie Cohen, DIRECTOR OF MARKETING AND COMMUNICATIONS
Jason Reasor, DIRECTOR OF FACILITIES
Elinor Josephson, DIRECTOR OF ENGAGEMENT AND PROGRAMMING
Mike Sirowitz, MAUSOLEUM DIRECTOR
Derek Hurwitz, DIRECTOR OF DEVELOPMENT
Rita Diamond, DIRECTOR OF OPERATIONS
Susan Stallone, DIRECTOR OF SOCIAL JUSTICE

MAIMONIDES INSTITUTE FOR JEWISH LEARNING

Heather Erez, DIRECTOR OF YOUTH AND FAMILY EDUCATION AND ENGAGEMENT
Ronni Graf, DIRECTOR OF EARLY LEARNING CENTER
Robin Eisenberg, RJE, DIRECTOR OF JEWISH LEARNING AND LIVING EMERITA



**Past President
z"l - of blessed memory*

Schaefer Family Campus 333 Sw 4th Avenue | Boca Raton, FL 33432 | 561 391 8900

Beck Family Campus 9800 Yamato Road | Boca Raton, FL 33434 | 561 391 9091

tbeboca.org



Quality Orthodontics
That Will Make You Smile :)
Boca Raton • Parkland • Coral Springs
SOFLORTHO.COM / @SMILESBYDR

Call to schedule your
complimentary consult today!
561-483-0072



Andrew H. Krinsky M.D.
Obstetrician-Gynecologic Surgeon

Board Certified Religious Mohel
Anesthetic Used

(954) 980-6337
www.southfloridamohel.com

Auracal

Senior Home Care, LLC



Home Health Aides, Certified Nursing Assistants, and Registered Nurses to assist you with:

- Personal Care • Companionship • Respite Care • Alzheimer's & Dementia Care • Medication Management
- Transportation • Meal Preparation • Light Housekeeping • Grocery Shopping • Post Surgery Care

Care in the Comfort of Your Home, Hospital, or Facility

Complimentary In-Home Consultation

Qualified and Compassionate Care

We Accept All Long Term Care Insurance Policies and Private Pay — Affordable Rates

CALL TODAY: 561.740.8667

1014 Gateway Blvd., Suite 101 • Boynton Beach

www.auracalshc.com

Licenses: Palm Beach NR30211558 • Broward NR30211706

PRIVATE DUTY
HOME CARE
concierge ♦
heartfelt experiences to age-in-place

We support families that are going through life-changing physical, emotional, and cognitive decline of their loved ones.

Private Duty Home Care Concierge has established 3-levels of support resources and coordination of services to assist you and your family:

Private Duty Home Care
Care Management & Life Care Planning
Family Guardian Support Services

We invite you to reach out to us for a complimentary consultation about how we can help you create solutions that address your family's unique circumstances.

561.817.2490 ♦ info@pdhcc.com ♦ www.pdhcc.com



Jill Poser, CGCM,CMC, CDCP
Principal



333 Sw 4th Avenue | Boca Raton, FL 33432

Non-Profit
Organization
U.S. POSTAGE
PAID
Boca Raton, FL
Permit No. 37

CURRENT RESIDENT OR

DATED MATERIAL | PLEASE RUSH

A Reform congregation affiliated with The Union for Reform Judaism



BRILLIANT
Dermatology
& Aesthetics

DERMATOLOGY PERFECTED

When you come to Brilliant Dermatology & Aesthetics, you know you are seeing Dr. Norton, a highly trained board certified dermatologist who provides exceptional & personalized patient care. Dr. Norton's passion for skin health and her one-on-one approach have made her a favorite in South Florida.

**MEDICAL
DERMATOLOGY**

**CUTANEOUS
SURGERY**

**COSMETIC
DERMATOLOGY**

**AESTHETIC
SERVICES**

**SKIN
CARE**

DELRAY BEACH 5162 Linton Blvd., Suite 203
www.brilliantdermatology.com
561.877.DERM (3376)

Elissa S. Norton, MD
Board Certified Dermatologist
MIT | Harvard University
University of Miami
School of Medicine

