

An abstract painting in a folk-art style. At the top, a vibrant rainbow arches over a landscape. Below the rainbow, a large, multi-colored tent with a pointed top is visible. In the bottom left corner, there are stylized flames in red, orange, and yellow. The background is a mix of purple, blue, and green washes.

the chronicle

TEMPLE BETH EL OF BOCA RATON

MAY/JUNE/JULY 2025 | SIVAN/TAMMUZ/AV 5785

Annual Meeting

PAGES 7-9

You'll Never Walk Alone

PAGES 10-11

Milestone Hall

PAGES 12-13

You Shall Love The Stranger

DEUT. 10:19



Say YES

Is it possible to have the best of both worlds?
At Sinai Residences, **we say, Yes.**

Yes to having sophistication with none of the stuffiness.

Yes to upscale living in a down-to-earth atmosphere.

Yes to a cultural worldliness in a culture of friendliness.

Yes to having it all.

Call Today! 561.834.4520
SinaiResidences.com/Say-Yes



TOBY & LEON COOPERMAN
SINAI RESIDENCES

A LIFE CARE COMMUNITY IN BOCA RATON

The Circle of Care

BY RABBI DAN LEVIN
DLevin@tbeboca.org

In the Talmud, the rabbis debate what is the most important verse in the whole Torah. Rabbi Akiva teaches it is Leviticus 19:18 – “You shall love your neighbor as yourself.” But Ben Azzai says it is a different verse, Genesis 5:1 – “When God created humanity, it was made in the image of God.”

These two verses sum up the core of what God needs us to learn.

What happens when we follow the teaching of Ben Azzai? By recognizing each and every person as created in the image of God, we begin to see how each and every person is individually and uniquely holy and precious.

When we look into the eyes of the Other, and see there the radiance of God in whose image we were both created, a bond is formed that connects us one to the other.

There are more than eight billion people on the planet. Most live in other lands, have different physical features, speak different languages, practice different religions.

It is easy to wall off certain people from your circle of care and concern. And at the same time, Rabbi Akiva comes along and says you have to push yourself to extend your circle beyond the boundaries of your immediate self, to love the person who is next to you.

Something changes fundamentally in our souls when we push ourselves to see the holiness and infinite worth in the person next to us. When we look into the eyes of the Other, and see there the radiance of God in whose image we were both created, a bond is formed that connects us one to the other.

These bonds are what give us energy and purpose. When you think about what matters most in your life, isn't it the people with whom you share those bonds? Your family, your friends – your people?

This is why Judaism teaches that community is holy and sacred. This is why we join synagogues and invest ourselves in community. We need to know that we

are loved. We need to feel that sense of care. And just as important as it is to receive that love and care is our soul's demand to share our love and care with others.

Through that bond of love, we share in each other's experience – we feel what the other person feels. Their joy becomes our joy. Their pain becomes our pain.

And that bond we share compels us to care for that other person, to take responsibility for their security, their welfare, and their happiness.

Temple Beth El is not just a synagogue, where people come to worship. It's not just a congregation, where people come to gather. It's a community, an extended family where each and every person matters.

Rabbi Akiva taught that love is the core tenet of the Torah. Our congregation celebrates the way in which the Torah commands us to love.

We are obligated to love our neighbors – those who are in our immediate circle of care. But the Torah also tells us we have to push ourselves to include the stranger in that circle of care.

And lastly, we are taught to love the Holy One, the Creator of the Universe – for every single soul is precious to God, and thus we need to treat every soul as precious as well.

The fact is that while our primary responsibility is to the people in our immediate circle, Judaism teaches that we also share responsibility for ever widening circles that include our larger community, our fellow citizens, our people in Israel and around the world, and peoples everywhere.

This is why so much of what we seek to accomplish at Temple Beth El is rooted in care, in providing resources and help to those who need an extra measure of love and care and support. It is because buttressing each other in times of need, and raising each other up when we stumble is a celebration of Rabbi Akiva and Ben Azzai – a celebration of love and the holiness of every human spirit.



ON THE COVER: “Love the Stranger” from the Tapestries of Love in the lobby of the Schaefer Family Campus

Caring for Our World Through Social Justice



BY GINA SHUGAR
TEMPLE BETH EL
PRESIDENT
GShugar@tbeboca.org

SOCIAL JUSTICE TASK FORCE

Rabbi Greg Weisman

Director of
Social Justice
Susan Stallone

Aline Fisher
Danielle Trepeck
David Friedlander
Gina Shugar
Jan Fine
Jeffrey Katz
Jo Fine
Joel Ivers
Lauren Gross
Leslie Steinberg
Mariya Kemper
Wendy Walin

This issue of the Chronicle focuses on CARE – how Temple Beth El actively supports you, our community. Beyond the care we provide to our temple community, our Temple Beth El Social Justice Department will allow us to collectively provide care to the world outside our temple community.

I wanted to update the congregation on the developments in this new area of our synagogue – our Social Justice Department.

Our Social Justice work consists of two pillars:

(1) SOCIAL ACTION:

Direct, hands-on service to address immediate needs, such as providing nourishment for the hungry and offering support to those facing hardship.

(2) CIVIC ENGAGEMENT:

Working to shape our society in a way that truly reflects the core tenets of our Jewish faith, advocating for policies and systems that promote justice and equity for all.

OUR SOCIAL JUSTICE MISSION: To enrich lives and improve the world by living out our Reform Jewish values.

OUR SOCIAL JUSTICE VISION: A world that is safe, just, free, and fair for all.

Rabbi Greg Weisman and Susan Stallone, Director of Social Justice, lead this initiative and have established the Social Justice Task Force. This passionate team has debated thoughtfully, and has developed a mission, vision and five core values for Temple Beth El's Social Justice work. All are based on foundational Jewish principles, rooted in our sacred texts and traditions. These values will serve as our compass, our "north star," and will constantly remind us of our purpose.

These aspirations are firmly grounded in five Reform Jewish core values:

CORE VALUE #1: All of Israel is responsible one for another - *Kol Yisrael Aravim Zeh baZeh*, Babylonian Talmud, Shevuot 39a. This powerful teaching underscores our inherent responsibility for the well-being of Jewish people everywhere. Our Jewish identity is a rich tapestry woven from nationality, religion, and ethnicity, and this value calls us to stand in solidarity, supporting Zionism and actively combating antisemitism in all its forms.

CORE VALUE #2: You shall love the stranger - *V'Ahavtem et HaGer*, Deuteronomy 10:19. The Torah's emphatic repetition of this mitzvah – appearing thirty-six times – highlights its profound importance. We are called to extend our care and compassion beyond our own community, embracing those who are different and actively pursuing justice not only for ourselves but for all who dwell among us.

CORE VALUE #3: Justice, justice you shall pursue - *Tzedek, tzedek tirdof*, Deuteronomy 16:20. The doubling of the word "justice" in this powerful verse emphasizes our active obligation. We are not simply called to react to injustice, but to proactively seek

out and create a world that is more just, fair, and equitable for all of humanity, beginning with our own Jewish people.

CORE VALUE #4: You must not remain indifferent – *Lo tuchal l'hitaleim*, Deuteronomy 22:3. Our tradition teaches us that recognizing injustice demands action. We have a moral imperative to give, to help, to repair the brokenness we see in the world. To stand idly by is itself an injustice. While the task of fighting injustice can feel immense, our tradition reminds us that while we are not obligated to complete the work, neither are we free to desist from it.

CORE VALUE #5: As my ancestors have planted for me, so do I plant for my children, Babylonian Talmud, Ta'anit 23a. We are the beneficiaries of the efforts of past generations who strived to create a world where we could thrive. In gratitude for this inheritance, we embrace our responsibility to future generations, working diligently to leave them a world that is even better, a world where they too can flourish.

These foundational principles will guide our actions in both our Social Action and Civic Engagement work as we strive to leave our world a little brighter than we found it.

Are you inspired to join us in this vital work? If you are interested in learning more about how you can participate in Temple Beth El's Social Justice initiatives, please reach out to Susan Stallone at SSstallone@tbeboca.org to be added to our mailing list. We also invite you to attend our next Social Justice meeting on Wednesday, May 7th at 7:00pm at the Schaefer Family Campus.

The Giving Tree: Blue Jean Collection

Friday, May 2

6:00pm

Blue and White Shabbat

Schaefer Family Campus

Support The Giving Tree by donating NEW children's jeans (sizes 4–16) at Yom Ha'Atzmaut and Blue & White Shabbat. Shorts and long pants are also welcome. All items go to The Giving Tree's Clothing Closet, which helps local families in need. **No used or adult clothing, please. They will not be accepted.**



Questions? Contact contact@thegivingtreeboca.org

Social Justice Committee Meeting

Wednesday, May 7

7:00pm

Schaefer Family Campus

All interested Temple Beth El members are invited to join us for a discussion on the temple's core social justice positions. We will introduce Social Justice Circles and collaborate on plans to make the greatest impact in the year ahead. Your voice and participation are essential!

Questions? Contact Susan Stallone, Director of Social Justice, at SStallone@tbeboca.org or 561-314-2832.

Register at tbeboca.org/social-justice

Welcome Rabbi Ashira Boxman

We are delighted to share with you that Temple Beth El will be welcoming Ashira Boxman as our next Assistant Rabbi. Ashira is a fifth-year rabbinic student at the Hebrew Union College – Jewish Institute of Religion in New York City.

During her years at HUC-JIR, Ashira has served as rabbinic intern at Larchmont Temple and Temple Sharaay Tefila of Westchester, where she helped lead worship and worked with students of all ages as a teacher and advisor. She also spent time learning pastoral care as a chaplain at Bellevue Hospital.

Ashira has a deep passion and commitment for the State of Israel. During her time in rabbinical school, she taught a college-accredited high school course on the history of Israel to 11-12th grade students, and in partnership with Rabbi Josh Weinberg, the Executive Director of the Association of Reform Zionists of America (ARZA), Ashira pioneered monthly Israel programming for her fellow students at HUC-JIR in New York. She was recently published in *Young Zionist Voices*, a collection of essays on Zionism by young Jewish leaders, and is an "iFellow" earning a Masters Concentration in Israel Education at the iCenter.

Prior to rabbinical school,

Ashira worked as the Birthright Israel IACT Coordinator at University of Texas Hillel in Austin, directing and planning Birthright trips for UT students, and also engaged alumni in post-Birthright programming and events. She also served as engagement associate at Hillel of Broward and Palm Beach.

Ashira graduated magna cum laude from Florida State



University with a BS in Family and Child Science and a Minor in Social Welfare. She has a lifelong passion for Jewish camping, having spent time as both staff and a camper at URJ Camp Harlam. Ashira grew up in Danbury, CT, Baltimore, MD, and most recently, around the corner in Parkland, Florida. Her father serves as Rabbi at Congregation Kol Tikvah in Parkland and she graduated from high school from Donna Klein Jewish Academy in Boca Raton.

Ashira will begin her service to Temple Beth El in July, and we are excited to have her become part of our clergy team and our Temple Beth El family.

To my soon-to-be Temple Beth El family,

I am truly grateful and honored for the opportunity to join your congregation as your next Assistant Rabbi. Even in the short time I've spent with some of you so far, it's clear how welcoming, friendly, and vibrant this community is.

I'm so looking forward to getting to know each of you in the months ahead.

After trading South Florida sunshine for snow, I'm excited to come home —nothing beats the warmth of both the weather and the community.

With excitement,
Ashira Boxman

New Membership Year Starts July 1, 2025!

Thank you for being a valued member of Temple Beth El. We're excited about the year ahead and look forward to offering you new opportunities to learn, connect, grow spiritually, and take part in acts of Tikkun Olam—repairing the world together. There are so many ways to get involved and build meaningful relationships within our community. Join one of our 35+ Beth El Circles (affinity groups), connect through Beth El Chavurot (friendship groups), or engage with Sisterhood,



Your Congregational Commitment includes membership to Brotherhood, Sisterhood and ARZA (The

Brotherhood, Parenthood, The Giving Tree, Youth Engagement, and more. If you're interested in taking on a leadership role, we invite you to volunteer through any of these groups or explore opportunities with our open committees.

Association of Reform Zionists of America, the Israel arm of the Reform Movement). We strive to enhance the value of your membership, including continued elimination of the Building Fund, Brotherhood and Sisterhood membership dues, and Bar/Bat Mitzvah fees. Our Strategic Plan, which was developed over the past three years with consultants, staff and many of your fellow congregants, has set Temple Beth El on a path of strategic priorities. You will continue to see new programming, along with many of our signature events in this upcoming year.

You will receive an email in mid-May to renew your membership. As in the past, your membership will automatically renew, including your method and frequency of payment, unless you notify us otherwise.

Payments start on July 1, 2025 and your current payment method on file will be used to process the payments. **PLEASE DO NOT** send your payment prior to July 1, 2025.

For more information about membership and Congregational Commitment, please contact Elinor Josephson, Director of Engagement and Programming, at EJosephson@tbeboca.org or 561-314-2833. If you have a billing question, please contact Billing Support at billingsupport@tbeboca.org.

WELCOME

Celebrating New and Returning Members

Welcome New and Returning Members who have joined between January 17, 2025 and March 24, 2025. Additional members not listed at the time of printing will be included in our next list. For help getting involved, please contact Elinor Josephson, Director of Engagement and Programming, at EJosephson@tbeboca.org or 561-391-8900.

Meredith Bennis
Sandra & Eric Benyamini
Lauralee Longstaff & Robby
Birnbaum and their children,
Gabriel & Emma
Stacey & Todd Breen
Barbara & Erwin Brilliant
Deb Cogan
Bradley Cohen & Richard Cohen and
Richard's children, Spencer & Parker
Harry & Franne Dickman
Burton Firtel
Brian Flaks
Joshua & Amy Goldman and
their children, Julia & Alexa

Felicia & Eric Gordon and their
children, Alec & Emily
Danny Gubin & Jessica
Cicurel and their child, Sol
Charles & Andrea Hill
Renee & Barry Honig and their
children, Jacob, Cameron,
Ryan & Harrison
Lizzie & Jonathan Honig and their
children, Jett, Skylar & Morgan
Sheila Jaffe
Lisa Kahn
Lindsay & Jason Kryshka and
their children, Brooke & Ethan
Byron & Johanna Lassin and their
children, Joshua, Rachel & Jacob

Evelyn & Irwin Loft
Kieran & Briana Mundt and their
children, Shane, Quinn & Alayna
Deborah & Eric Nemiroff
Shariff Pitts & Stephanie
Scianna Pitts and their children,
Maddox & Greyson
Harry Posin
Sheldon Reich
Stephanie Riesel
Sandi Sacks
Mindy Scot
Sammi Nayyar - Seltzer & Scott
Seltzer and their children, Ravi
Myles Nayyar & Raj Shai Nayyar

Adam & Tara Shane and their
children, Harper & Alex
Susie Shulman
Cynthia Silverman
Terri Sloane
Kirk Snyder & Lindsay Fierman
and their child, Harper
Jeremy Treatman
Karen & Elliott Wallace
Susan & Barry Werner
Sheryl Wolf
Stephanie Brensel & Leonard Wolff
Susan Shafran & Eric Yankwitt
and their child, Sydney

2025 Annual Meeting & Dinner

Temple Beth El's Recipe for Success

TEMPLE BETH EL'S RECIPE FOR SUCCESS



Ingredients:

2,000 MEMBER HOUSEHOLDS
350+ VOLUNTEERS
270 LAY LEADERS
92 EARLY LEARNING CENTER
STAFF + EDUCATORS
57 RELIGIOUS SCHOOL
STAFF + EDUCATORS
65 ADMINISTRATIVE STAFF
7 CLERGY MEMBERS

Directions:

COMBINE ALL INGREDIENTS
WITH HEART AND PURPOSE.
STIR IN LOVE, CARE,
AND COMMITMENT.
LET THE COMMUNITY
RISE TOGETHER—AND
SERVE AND ENJOY.

THURSDAY

MAY 29 | 2025

SCHAEFER FAMILY CAMPUS

6:00 PM

**Roasted Turkey
Dinner (optional)**

DINNER PRICES

Adults: \$39

Children ages 5 -13: \$19

Children ages 4 and under: Free

Prices increase to \$44 per adult and \$22 per child ages
5-13 as of Thursday, May 22.

Registration for dinner closes at 8:00pm on
Tuesday, May 27.

6:30 PM

Annual Meeting

Join us as we honor our outstanding volunteers and professionals, celebrating the key ingredients that combine to create the recipe for success at Temple Beth El!

AGENDA

- Confirm the slate for the 2025-2026 Board of Trustees
- Present the 2025-2026 Operating Budget
- Present the Joseph Q. Kline Lifetime Achievement in Volunteerism Award to Debi Jackman
- Present the John Rogers Award for Exemplary Professional Service to Robert Linder
- Present the Robin L. Eisenberg Awards to Johanne Lopez and Perle Gass
- The Giving Tree dedication

Register for dinner, or just to attend the meeting, at tbeboca.org/annual-meeting-2025

The 2025 Honorees

2025 BETH EL EARLY LEARNING CENTER WINNER OF THE ROBIN L. EISENBERG JEWISH LEARNING AND LIVING EDUCATOR OF THE YEAR AWARD

Johanne Lopez

Johanne Lopez is the Beth El Early Learning Center Teacher of the Year! She currently teaches one of our PreK classes, the Mighty Manatees, a lively group of five-year-old students who bring joy and purpose to her work each day.

Johanne was born in Venezuela, where she earned a law degree and worked in the criminal justice field before relocating to the United States 26 years ago. Since then, she has built a life rooted in family and education. She is a proud mother of three daughters—Sara, Victoria, and Debora—each of whom continues to inspire her in their own unique ways. She also recently celebrated a joyful milestone in her personal life and got married!

Johanne has been teaching for 15 years, and for the past six years, she has had the privilege of

being part of our incredible school community. What motivates her most as an educator is, “Witnessing the growth and transformation of young children throughout the school year. Their academic progress, curiosity, and resilience continually remind me of the importance and impact of early education. Each day, I learn as much from them as they do from me, and that mutual growth is what keeps me passionate about teaching.”

We are so grateful to have Miss Johanne on our team and are thrilled to present her with the Robin L. Eisenberg Jewish Learning and Living Educator of the Year Award.



2025 RELIGIOUS SCHOOL WINNER OF THE ROBIN L. EISENBERG JEWISH LEARNING AND LIVING EDUCATOR OF THE YEAR AWARD

Perle Gass

Born in New Jersey to European Jewish immigrants, Perle Gass is uniquely familiar with the role Jewish community can play in one's life.

Upon moving to Boca Raton in 2001, she found a new home within the Jewish community and has dedicated her life to the children and families within it ever since.



She began teaching preschool at the local Jewish Community Center (JCC) before moving to B'nai Torah Congregation. There, she taught both preschool and religious school, while developing a new, hands-on curriculum for first graders to learn about Judaism's rich history and traditions.

Transitioning from early

childhood education, Perle returned to the JCC, dedicating twelve years working to plan and execute every Jewish child's favorite time of the year - summer camp.

In 2018, Perle joined the Temple Beth El family, contributing her expertise to the Religious School, by teaching and ensuring smooth program operations across the board. Suffice to say, Perle has made her way around our local Jewish mishpucha, touching the lives and shaping the experiences of Jewish children for over twenty years.

For Perle, watching children's curious minds understand their Jewish heritage is an unbelievably rewarding experience. Knowing that her work has helped start so many children's Jewish educations is something she cherishes. But, in her words, “It's even better to get to know the families of her students and watch the children grow and flourish in our Jewish community.”

2025 JOHN ROGERS STAFF AWARD FOR EXEMPLARY PROFESSIONAL SERVICE

Robert Linder

Robert Linder is a dedicated member of the Temple Beth El community, having joined the staff 14 years ago. His journey with the temple began at the Schaefer Family Campus, where he provided support for programming, High Holy Day and Shabbat services, dinners, and assisted with funerals and memorial services at the Beth El Mausoleum. He transferred to the Beck Family Campus as a Facility Maintenance Assistant where he works closely with the staff of both the Religious School and Beth El Early Learning Center, and is dearly loved by staff and parents alike.

Throughout his time at Temple Beth El, Robert has built lasting relationships and developed a deep appreciation for the people and the environment around him, especially the children in the Early Learning Center, whom he adores and who adore him!

Outside of his involvement at the temple, Robert has a variety of interests and hobbies. He has a passion for motorcycles and enjoys the freedom and excitement that

comes with riding. Additionally, he is an avid fisherman, often spending his leisure time out on the water. Sports are another area of interest for Robert, particularly football and basketball, where he finds joy in both playing and watching games.

Above all, Robert treasures time with his family. Whether it's sharing a meal, attending a sports event, or simply spending quality time together, family is a central part of Robert's life.

We are so grateful for Robert's years of dedicated service. Congratulations Robert on this well-deserved award that was voted on by your peers and the Temple Beth El Board of Trustees!



2025 JOSEPH Q. KLINE LIFETIME ACHIEVEMENT IN VOLUNTEERISM AWARD

Debi Jackman

When Debi Jackman was young and trying to figure out “what she wanted to be when she grew up,” she always knew that she wanted to help people. That desire led her to pursue a career as a Speech-Language Pathologist.

Over the past 40 years, she has had the privilege of doing just that. She has worked with children and adults, collaborated with countless colleagues, and built relationships with parents and families. Debi has said it's been an incredibly rewarding journey and she sincerely hopes she has made a positive impact. All of these experiences have shaped who Debi is today and she does her best to pay it forward in any way she can.

When Debi joined Temple Beth El thirty years ago, she met Rabbi Merle E. Singer and knew instantly that she had

found a community for her and her family.

In the thirty years since then, Debi has contributed to the temple in multiple ways. She served on the Sisterhood board for fifteen years, is part of a Chavurah, and contributed to committees like the Religious Activities Committee, the Membership Committee, and the Cantorial Search Committee. She has also assisted with The Giving Tree, crocheted healing blankets, organized and set up Onegs for Shabbat, and made latkes for Temple Beth El's Religious School. Other volunteer projects she has participated in include multiple Mitzvah Day activities with Temple Beth El, like making sandwiches for Boca Helping Hands, and cooking Easter dinner at the Wayne Barton Center with her son Micah.

“Receiving this award is truly humbling” says Debi. “I never imagined I would be recognized in this way! Thank you to the committee for this incredible honor. I'm deeply grateful. I also want to thank Temple Beth El for providing me with the opportunity to give back to this wonderful community. I will continue to reach out and help others because that's what I know how to do.”



You'll Never Walk ALONE

BY RABBI ELANA RABISHAW

AL-ANON FINDS SACRED SPACE IN OUR TEMPLE

IT ONLY TAKES TWO PEOPLE TO MAKE A MEETING.

Some might say it also takes a pot of coffee, a quiet space, and the Serenity Prayer. But mostly, it takes the willingness to show up, be honest, and care for one another, even in our most broken places.

About a year and a half ago, on Rosh HaShanah, I gave a sermon about a piece of my own brokenness—my relationship with my sibling and what it's felt like to love someone whose path has been shaped by addiction. I spoke about grief, distance, and silence. About the ache of watching someone change and not knowing how to hold onto them.

I shared how my healing began the day I walked into an Al-Anon meeting and realized that while my pain felt isolating, I wasn't alone.

After that sermon, in one of our meetings, Rabbi Dan said something I won't forget:

"You know what the next step is. Start a meeting."

He saw what I had felt—that the sacredness of fellowship and the healing power of radical acceptance doesn't just belong in anonymous spaces or church basements. They belong in the heart of the Jewish community at Temple Beth El.

Since offering that sermon, something has shifted. By sharing my vulnerability, others were able to be vulnerable with me—about a topic that's so often wrapped in shame and secrecy. I've found myself in more sacred conversations about the quiet, painful ways addiction ripples through family life. Some of you still tell me you remembered that sermon. Some said it gave you the language—or the courage—to finally speak about a part of your story that had stayed hidden for years.

I've sat with people during moments of crisis—when someone they love is sick or spiraling or when they feel completely worn down by worry and fear.

Again and again, I've heard the same thing: how lonely this kind of pain can feel—even though it doesn't have to be.

And now, it isn't. Not here. Not anymore.

This is what it means to live out Temple Beth El's core value of care.

We don't just talk about supporting one another—we do it. Through pastoral counseling, crisis response, caregiver and bereavement support, and now, through the quiet, steady fellowship of Al-Anon.

Since last July, our doors have been open every Friday at 1:00pm for a weekly



Al-Anon meeting.

Anyone is welcome. You don't need to register. You don't need to explain. You can just come as you are.

Because those are often the moments when the stories finally come out—when someone you love is hurting. When you're too tired to keep pretending everything's okay. When you've been carrying pain for years, you're unsure if it even has a place in a synagogue.

But it does.

It belongs here—because we care. Because you matter.

And because healing is holy, too.

The light spills through the tinted windows of the Beit Midrash each Friday, and something sacred happens. People show up. Some speak, some don't. Some listen, others cry. Some have been in the fellowship for years; others are just beginning to explore, "a visitor," we might call them.

Some are members of our Temple community, and some are not. None of that matters once you walk through the door.

Bikkur Cholim

What matters is that you're not alone.

In that room, there is no need to explain or justify. You are allowed just to be—to breathe, to exhale, to let go of whatever you've been carrying. Week by week, this meeting has quietly become a reflection of our synagogue at its best: a space built on trust, humility, and compassion. A space where people bring their whole selves—wounded and wondering—and are met with love instead of shame.

It is unlike any meeting I've ever attended.

And it is one of the most sacred things I've had the privilege to help begin.

Al-Anon is a fellowship that “offers the support, as well as the tools, to acknowledge, accept, and deal with the family disease of alcoholism in a safe and loving atmosphere.”

I am so proud that Temple Beth El cares and offers this here: a safe and loving atmosphere, a sanctuary for those who need one, a space where brokenness doesn't disqualify you from the community—it draws you more deeply into it.

Al-Anon has taught me that healing doesn't come from fixing all the broken parts. It comes from being brave enough to show up and be seen. It comes from knowing that you are not alone and never have to be.

As I prepare to return to California, I've been reflecting on what it means to leave something behind—not just in programs or events but in relationships, values, and the spaces where people feel safe enough to tell the truth about their lives.

If there's one thing I pray continues, it's this meeting.

That people keep showing up.

That the coffee is always plentiful.

And that this little circle of chairs surrounding bright-colored slogans in the Beit Midrash remains a place where honesty is met with care and compassion, and pain is never carried alone.

Because hosting Al-Anon is not just hosting another meeting. It reflects who we are at our best when we care for one another.

And that is the holiest thing of all.



BY CANTOR LORI BROCK

I am truly inspired by and honored to work with the group of sensitive and caring congregants we call our Bikkur Cholim Team. Bikkur Cholim refers to the mitzvah of visiting and extending aid to the sick. Each day I marvel at the care, connections and love that these members express to those who are most vulnerable in our community.

Every week these devoted congregants call and visit members or family of members who are ill. They listen and open their hearts, offering compassion and emotional support – spreading the “Beth El love!” Then, they share this information with our clergy so we are directed to those needing direct pastoral care from a rabbi or cantor.

Being homebound can be very difficult for many of our members and the Bikkur Cholim Team also regularly calls and visits these members who are feeling lonely. If you or someone you know is homebound and would like a call or visit from our Bikkur Cholim Team, please contact the clergy office.

Our volunteers, Liliana Abramson and Debbie Averbook, lead the team of Dori Barenholtz, Susan Cohen, Rasheena Taub and Sonny Thal. They are such valuable partners with our clergy. When there is a time sensitive need, they email or text us so we can be there as quickly as possible to support, pray with or counsel our members who are ill or in need of spiritual support.

Due to privacy laws, hospitals and care facilities are not permitted to share any information about who is hospitalized or in their care. The only way we know if someone is hospitalized is if you tell us. If you or a fellow member are in the hospital or ill, please contact the clergy office. Our goal is that if you can't physically come to Temple Beth El, we can bring a little Temple Beth El to you or your loved ones.

If you or a family member are hospitalized or ill, please contact Rachel Pinhasi at 561-314-2655 or RPinhasi@tbeboca.org so a member of our Clergy can be in touch.

Memories to be Made

“The space was never referred to as anything other than the Social Hall, but it was really so much more. So, I searched for the proper word that would make the space where so many important moments of our lives take place. I found ‘MILESTONE,’ and that resonated all that really happens in what has now become Milestone Hall.”

-SHEILA ASHER

What is a Milestone? At Temple Beth El, a milestone is a cherished moment in a remarkable journey. A heart-marked point in time where we pause momentarily to recognize how far we’ve come together. Each milestone celebrated is a memory etched into the timeline of a shared story – measuring more than merely time, but rather the intertwined connections of heartbeats and eyes bearing witness to magical moments.

Temple Beth El has officially renamed its social hall, “Milestone Hall,” thanks to the incredible generosity and vision of Sheila Asher. Like many of us through the years, the Asher family has celebrated B’nai Mitzvah, attended the Beth El Bash, and many more of life’s most joyous moments within the walls of Temple Beth El. Prior to the renaming, one particular milestone served as a beautiful catalyst for Sheila’s meaningful dedication in memory of her beloved husband, Dick.



in Milestone Hall

On June 27, 2024, as a warm summer sun set over Boca Raton, Temple Beth El was whimsically transformed to celebrate an anniversary. Beyond the stunning décor, the true magic of the evening was found in the nature of the anniversary being celebrated – the 70th anniversary of the marriage of Sheila & Dick Asher. Family and friends from around the world gathered to celebrate seven decades of love, friendship and strength. It would be the last anniversary shared by Sheila and Dick, as just weeks later, we said our goodbyes and paid our immense respect to the legend and life of Dick Asher.

This anniversary was a moment of time, etched forever in the minds and hearts of many... it is the quintessential definition of a “milestone.”

As part of Temple Beth El’s “BE The Future” endowment campaign, the Asher Family’s gift does more than commemorate their remarkable anniversary. Their endowment further perpetuates a lifelong legacy of generosity and

kindness and provides our over 2,000 member households the financial support so that together we will celebrate countless more milestones for years to come.



Temple Beth El would like to thank Sheila and Dick Asher, the Asher family, and all those who have made meaningful gifts to our BE The Future Endowment Campaign. For questions regarding the campaign, dedication opportunities, or legacy giving at Temple Beth El, please contact Derek Hurwitch at 561-701-6217.

BETH EL BASH





Thank you to the sponsors of the 2025 Beth El Bash!

PRESENTING SPONSORS HIGH STRAIGHT

Patty Beck & Martin Rubenstein
Diane & Richard Templer

STRAIGHT FLUSH

Freyda Burns
Marla Schaefer & Steven Weishoff

FOUR ACES

Dawn Miller & Jonathan Grayer
Barbara & Leonard Tamchin

FULL HOUSE

Rita Judson
Ken Endelson
McCleskey Construction

HIGH FLUSH

Cantor Lori & George Brock
Emily & Richard Cohen
Howard Guggenheim
Ilyne Mendelson & Steven Terk
Sam & Simone Spiegel Family Foundation
Janet Serle & Ira Malin
Stephanie & James Sokolove
Wendy & Steve Walin

A&S Total Cleaning
Alpha Security
Shelli & Gary Bettman
Leslie & Bernie Friedman
Nancy & Dennis Gilbert
Guttermann's, Inc.
The Hirsh Center - Meredith & Marc Hirsh
Interiors by Brown
Suzanne & Jeffrey Katz
Lauren & Richard Koblick
Melvin Lazar
Jan & Allen Lev
Aimee & Rabbi Dan Levin
Marsh & McLennan Agency
PGAL Architects
Andrea & Mark Platt
Susan & Barry Podolsky
SMILES by Dr. R - Lindy & Ira Rothstein
Toshiba Business Solutions
True Digital Works - Sadie Mitnick & Mark Davison
Barbara Silver & Steven Willner
Marilynn & Paul Yentis

CORPORATE SPONSORS

The Art Warehouse of Southampton
Biondan North America
Kandice Freedman, M.Ed, Ed.D.
Total Cleaning
TSS Photography
Dr. Andrea Corn, Psychologist
Promotional Breezes
PJ Techtronics

Shabbat

Visit tbeboca.org/shabbat for a detailed service schedule including in-person and online viewing options.

FRIDAY, MAY 2

Yom Ha'Atzmaut Blue and White Shabbat

6:00pm

Schaefer Family Campus

Get ready for an amazing evening as we celebrate our love for Israel, our Jewish homeland! Join us in your favorite blue jeans and blue & white attire as we celebrate TWO Israeli-themed Shabbat services!

In our sanctuary, join us for an uplifting Yom Ha'atzmaut service celebrating 77 years of Israel's independence. Through prayer, song and reflection we will honor Israel's journey, resilience, and the enduring spirit of the Jewish people.

In our chapel, join us for a family-oriented, joyful and interactive experience, celebrating the beauty, history and spirit of Israel in a family-friendly and meaningful way.

See page 18.

SATURDAY, MAY 3

Shabbat Morning Minyan

10:45am

Schaefer Family Campus

A monthly Shabbat morning experience that combines the ancient words of our sages with the timeless power of music. This enlightening experience will bring spiritual nourishment through song, prayer, and the study of Torah.



FRIDAY, MAY 9

Volunteer Recognition Tot Shabbat

6:00pm

Beck Family Campus

On this special final Tot Shabbat of the school year, we thank our amazing Early Learning Center volunteers for their hard work and efforts all year long! Join us for a tasty pizza dinner, followed by a fun Tot Shabbat Service with our clergy and Oneg filled with ice cream treats and toppings.

Oneg sponsored by the Pre-K classrooms: Lucky Lions (110), Rainbow Fish (111), Shining Stars (112), Mighty Manatees (124), and Proud Pandas (125). Register at tbeboca.org/tot-shabbat

FRIDAY, MAY 9

Graduation Shabbat & Shabbat Celebrating May Birthdays

7:30pm

Schaefer Family Campus

We will honor our graduating high school seniors and offer everyone born in the month of May a special blessing.



**SHABBAT EVENING SERVICE
MAY 16 AT 7:30PM
SCHAEFER FAMILY CAMPUS**

**Honoring
Rabbi Elana
Rabishaw**

**FOR HER THREE YEARS
OF SERVICE AS OUR
ASSISTANT RABBI**

We wish Rabbi Rabishaw much success and fulfillment in her new position at Congregation Or Ami in Calabasas, California.



FRIDAY, MAY 23**Kol HaNeshama –
Service in the Round****6:00pm****Schaefer Family Campus**

Welcome Shabbat with a peaceful mind and an open heart at our service in the round. Through the use of niggunim (wordless melody) and inspiring melodies and words, we will deepen our connection to ourselves, to each other and the Holy One.

EARLY
SERVICE**FRIDAY, MAY 23****Shabbat Celebrating
Leadership****7:30pm****Schaefer Family Campus**

We will honor the Temple's officers and Board of Trustees for their remarkable wisdom and service to our congregation.

FRIDAY, MAY 30**Volunteer Recognition
Shabbat****7:30pm****Schaefer Family Campus**

On this night, we honor our amazing volunteers with a special blessing and gift for all they give to Temple Beth El.

See page 19.

FRIDAY, JUNE 6**Shabbat at Six****6:00pm****Schaefer Family Campus**EARLY
SERVICE**SATURDAY, JUNE 7****Shabbat Morning Minyan****10:45am****Schaefer Family Campus**

A monthly Shabbat morning experience that combines the ancient words of our sages with the timeless power of music. This enlightening experience will bring spiritual nourishment through song, prayer, and the study of Torah.

FRIDAY, JUNE 13**Shabbat****7:30pm****Schaefer Family Campus****FRIDAY, JUNE 20****Splish-Splash Tot Shabbat****6:00pm****Beck Family Campus**

Bring your swimsuits for a super exciting and wet Tot Shabbat! Join us for a pizza dinner at 6:00pm, followed by a family-friendly Shabbat service in the Kehillah Center. Then, we will head out to the Big Backyard for super splish-splash fun on the splash pad and bounce house water slides!

Oneg sponsored by the Childcare classrooms: Little Llamas (100), Baby Bears (101), Playful Penguins 1 & 2 (102/103), Creative Caterpillars (120). Register at tbeboca.org/tot-shabbat

FRIDAY, JUNE 20**Shabbat Celebrating
June Birthdays****7:30pm****Schaefer Family Campus**

We will celebrate everyone born in the month of June and offer them a special blessing.

FRIDAY, JUNE 27**Shabbat****7:30pm****Schaefer Family Campus****FRIDAY, JULY 4****Shabbat at Six****6:00pm****Schaefer Family Campus**EARLY
SERVICE**SATURDAY, JULY 5****Shabbat Morning Minyan****10:45am****Schaefer Family Campus**

A monthly Shabbat morning experience that combines the ancient words of our sages with the timeless power of music. This enlightening experience will bring spiritual nourishment through song, prayer, and the study of Torah.

FRIDAY, JULY 11**Shabbat****7:30pm****Schaefer Family Campus****FRIDAY, JULY 18****Shabbat Celebrating July
Birthdays****7:30pm****Schaefer Family Campus**

We will celebrate everyone born in the month of July and offer them a special blessing.

FRIDAY, JULY 25**Shabbat****7:30pm****Schaefer Family Campus**

CELEBRATE ISRAEL

Blue & White Shabbat

FRIDAY, MAY 2
6:00PM

SCHAEFER FAMILY CAMPUS



Bring New
Children's Jeans
to Support The
Giving Tree!
See page 5.

Wear your favorite blue jeans and blue & white attire as we celebrate TWO Israeli-themed Shabbat services!

In our sanctuary, join us for an uplifting Yom Ha'Atzmaut service celebrating 77 years of Israel's independence. Through prayer, song and reflection we will honor Israel's journey, resilience, and the enduring spirit of the Jewish people.

In the chapel, join us for a family-oriented, joyful and interactive experience, celebrating the beauty, history and spirit of Israel in a family friendly and meaningful way.

YOM HA'ATZMAUT

ISRAEL@77:

LOOKING BACK TO LOOK FORWARD

with Dr. Ken Stein of the
Center for Israel Education

Thursday, May 1

7:00pm

Schaefer Family Campus

Register at tbeboca.org/israel-77

October 7, 2023 stunned Israelis, American Jews and others across the world. Could the heinous Hamas attacks on Israelis have been avoided? Underestimation of the enemy, domestic complacency, and overconfidence in one's own superiority were the mistakes that Israeli intelligence made fifty years earlier prior to the outbreak of the October 1973 War.

In February and March 2025, the Israel Defense Forces released a series of findings that pointed to wrong-headed thinking and preparations prior to October 7. What mindsets and miscalculations were in fact deeply held in the months and years before the attacks?

This program is graciously underwritten by Friends of Music and the Arts and Temple Beth El Adult Education.

*Dr. Kenneth Stein is
Emory University
Emeritus Professor of
Contemporary Middle
Eastern History,
Political Science,
and Israel Studies.
From 1977 to 2024
he taught some 5800
students, earning
university and
national recognition*

*for his excellence in teaching, life-long mentoring
of students, internationalizing the curriculum.
Ken's record as a superb scholar and valued
public intellectual has been recognized
worldwide. Ken and his family support several
scholarships at Israeli universities that promote
the study of modern Israel.*



Volunteer Recognition Shabbat

Friday, May 30 | 7:30pm | Schaefer Family Campus



HAVE YOU VOLUNTEERED THIS YEAR?

It truly takes a village, and we're so grateful for the hundreds of members who have generously shared their time and talents this year—whether through committee work, Chaverim Team calls, or as leaders of Chavurot, Circles, and more.

To show our appreciation, we'll be honoring and thanking all of our volunteers during Shabbat. We also have a special gift for our volunteers! Be sure to stop by the "THANK YOU" table in the lobby after Services.

SHAVUOT

CELEBRATE WITH TREATS AND THE TRAVELING TORAH!

Sunday, June 1

5:30–8:30pm*

Program is 90 minutes; start and end times vary per home

Register at tbeboca.org/traveling-torah

Join us for Shavuot as we celebrate the moment when the Jews received the Torah at Sinai. Join one of our clergy members, with the Torah, as we gather in homes of your fellow congregants for an up close and personal exploration of the Torah, the Ten Commandments and how they relate to our lives today. Afterwards, enjoy delicious dairy treats and fun with your community!

This event is free to attend and OPEN TO ALL AGES. Some homes will be geared to towards families with children and others for adults. You will receive your home assignment and treat to bring after you register.

Space is limited at each location, so register by Wednesday, May 28.

SHAVUOT FESTIVAL MORNING SERVICE & YIZKOR

Monday, June 2

10:30am

Schaefer Family Campus



SAVE THE DATE!

2025/5786
High Holy
Days



Information, including the Service Schedule, Tickets and Tribute information will be available online July 15.

Visit tbeboca.org/high-holy-days-2025

Counting the Omer

A TRANSFORMATIVE SPIRITUAL PRACTICE

Each spring, we begin again. We move from Passover to Shavuot, liberation to revelation, Egypt to Sinai. And in between? We count—forty-nine days, known as the Omer.

The Omer began as an agricultural practice—each day, a step closer to the wheat harvest and the sacred offering brought to the Temple. But over time, it became something deeper. The Omer became spiritual, personal, and a daily practice of noticing where we are and who we are becoming.

This year, we invite you to count the Omer with us through the lens of creation and recreation—not only of the world but of ourselves and our community.

Please check your email on Monday afternoons for a guiding quote each day—rooted in Torah, spirituality, and personal growth—and a question to carry with you. These offerings are meant to open space for reflection, guide our steps through the wilderness, and help us shape not only who we are but who we are becoming—individually and together.



A Taste of Judaism®

3-SESSIONS:

Wednesdays, May 21, 28
and June 4

7:00pm

Schaefer Family Campus and
Virtual Beth El (Zoom)

Free, but registration required at
tbeboca.org/taste-of-judaism

This 3-session, free program shows people what is delicious about Judaism, our faith, our customs and our community. Interfaith couples, in-laws of Jews, unaffiliated Jews, individuals exploring conversion, and anyone seeking more knowledge about Judaism will find this course a good beginning.

A Taste of Judaism® is designed for “beginners” from any religious background, no previous knowledge of Judaism is required.

Please spread the word to friends and family members who may be interested! For more information, contact Rabbi Greg Weisman at GWeisman@tbeboca.org.



Lunch & Learn

BEYOND THE PAGES:

MAKING MEANING OF THE SHABBAT EVENING PRAYER SERVICE

with Rabbi Laila Haas

Tuesdays, May 6, 13, 20, 27

12:00pm

Schaefer Family Campus & Virtual Beth El (Zoom)

Whether you attend Shabbat services routinely or are new to Shabbat services, this course will transform your experience by illuminating the history, poetry, and spiritual significance behind the words of our Shabbat evening service. We will explore how the liturgy has sustained Jewish communities through centuries and continues to offer wisdom for our modern lives.

A MUSICAL JOURNEY THROUGH THE SHABBAT EVENING PRAYER SERVICE

with Cantor Lori Brock, Cantorial Soloist Michelle Auslander Cohen
and Cantor Jake Harris

Tuesdays, June 3, 10, 17, 24

12:00pm

Schaefer Family Campus & Virtual Beth El (Zoom)

Join our cantorial team on a special journey through the Shabbat evening prayer book through song. Together you will learn about the composers of your favorite Shabbat musical pieces and the intentions behind the musical score.

JUNE 3: Kabbalat Shabbat with Cantorial Soloist Michelle Auslander Cohen

JUNE 10: Shema and its Blessings with Cantor Jake Harris

JUNE 17: Amida with Cantor Lori Brock

JUNE 24: Healing and Concluding Prayers with Cantor Lori Brock
and Cantorial Soloist Michelle Auslander Cohen

BEYOND THE PAGES:

MAKING MEANING OF THE SHABBAT MORNING PRAYER SERVICE

with Rabbi Laila Haas

Tuesdays, July 1, 8, 15, 22

12:00pm

Schaefer Family Campus & Virtual Beth El (Zoom)

We will explore the Shabbat morning prayer service and how it offers wisdom for our modern lives through words of gratitude, praise and Torah. By the end of our four sessions together you'll find new meaning in the words and find your own authentic connection to this sacred time.



TEMPLE BETH EL MUSICAL ENSEMBLES PRESENT

THE SOUNDS OF MUSIC!

SUNDAY, MAY 4 • 3:00PM

SCHAEFER FAMILY CAMPUS

REGISTER AT [TBEBOCA.ORG/ENSEMBLES](https://tbeboqa.org/ensembles)

From Gershwin to Bernstein to Sondheim and beyond—enjoy an uplifting afternoon celebrating the iconic music of beloved Jewish composers!

Experience the power of music as Temple Beth El's talented multigenerational ensembles take the stage for an inspiring performance filled with cherished songs and showtunes.

FEATURING:

- Koleinu - Adult Choir
- Kol Zimrah – Audition-based Vocal Ensemble
- Teen Band Collective
- Malachim, 3rd – 5th Grade Choir

Our choir ensembles not only bring beautiful music to our community—they create lasting connections through a shared love of Judaism and song. Come be part of the joy, harmony, and spirit they share!

This event is free and open to all, but registration is required.

Reserve your spot today at tbeboqa.org/ensembles



Early Learning Center Important Dates

MAY-JUNE-JULY 2025

Monday-Friday, May 5-9

ELC Staff Appreciation Week

Tuesday, May 13 at 10:00am

Special Person Celebration 4s

Wednesday, May 14 at 10:00am

Special Person Celebration 2s

Thursday, May 15 at 10:00am

Special Person Celebration 3s

Thursday, May 15 at 9:45am

PreK Graduation Rehearsal
at Schaefer Family Campus

Sunday, May 18 at 2:00pm

PreK Graduation
at Schaefer Family Campus

Wednesday, May 21

Graduation Day

Thursday, May 22

Last Day of School
for Early Childhood Students

Monday, May 26

Memorial Day ELC Closed

Monday, June 2

Summer Adventure Camp,
Session 1 Begins

Monday, June 23

Summer Adventure Camp,
Session 2 Begins

Friday, July 4

ELC Closed

Monday, July 14

Summer Adventure Camp,
Session 3 Begins

Tot Shabbat

Friday, May 9 at 6:00pm

Volunteer Recognition Tot Shabbat and Pizza Dinner

On this special final Tot Shabbat of the school year, we thank our amazing Early Learning Center volunteers for their hard work and efforts all year long! Join us for a tasty pizza dinner, followed by a fun Tot Shabbat Service with our clergy and Oneg filled with ice cream treats and toppings.

Oneg sponsored by the Pre-K classrooms: Lucky Lions (110), Rainbow Fish (111), Shining Stars (112), Mighty Manatees (124), and Proud Pandas (125). Register at tbeboca.org/tot-shabbat

Friday, June 20 at 6:00pm

Splish Splash Tot Shabbat and Pizza Dinner

Bring your swimsuits for a super exciting and wet Tot Shabbat! Join us for a pizza dinner at 6:00pm, followed by a family-friendly Shabbat service in the Kehillah Center. Then, we will head out to the Big Backyard for super splish-splash fun on the splash pad and bounce house water slides!

Oneg sponsored by the childcare classrooms: Little Llamas (100), Baby Bears (101), Playful Penguins 1 & 2 (102/103), Creative Caterpillars (120). Register at tbeboca.org/tot-shabbat



Parenthood

Wednesday, May 14 at 7:30pm – Parenthood Meeting

EARLY LEARNING CENTER

Graduation 2025

SUNDAY, MAY 18

LUCKY LIONS, RAINBOW FISH & SHINING STARS

2:00pm in the Merle E. Singer Sanctuary
at the Schaefer Family Campus
followed by a reception in Milestone Hall

MIGHTY MANATEES & PROUD PANDAS

2:20pm in the Beck Family Chapel
at the Schaefer Family Campus
followed by a reception in Milestone Hall

All ceremonies will be livestreamed at tbeboca.org/live



Mazel Tov

TO THE 2025/5785 CONFIRMATION CLASS OF TEMPLE BETH EL

JACOB ALTSCHULER
EDEN EREZ
CHRISTIAN GORDON
SOPHIA HARRIS
JACOB KALLEN
MACKIE KATZ-SCHEAR
ELANA KURMAN
AIDAN LEDERBERG
SOPHIE LEIDNER

BRAYDEN LEVINE
BRANDON LIQUERMAN
NOA NIERMAN
JOEL NILSEN
JUSTIN RUBIN
AYDEN SHERMAN
ELI SHUGAR
MYA WOLFBERG
ZANDER WURMAN



CONGRATULATIONS TO OUR *Graduating Seniors* CLASS OF 2025!

Join us on May 9 at 7:30pm at the Schaefer Family Campus
for Graduation Shabbat. This evening we will honor our graduating
high school seniors at our celebration of Shabbat.



B'NAI MITZVAH



Alan Slutsker



Dean Elmaleh



Talia Wise



Graham Lezak



Reid Benson



Ava Sussman



Maya Elish



Justin Cowan

Alan Slutsker
Son of Rebecca and
David Slutsker
May 3, 2025 at 9:00am

Dean Elmaleh
Son of Jacques and
Tara Elmaleh
May 3, 2025 at 11:30am

Talia Wise
Daughter of Todd and
Brooke Wise
May 3, 2025 at 5:30pm

Graham Lezak
Son of David and
Dana Lezak
May 10, 2025 at 9:00am

Reid Benson
Son of Jill and Todd Benson
May 10, 2025 at 11:30am

Ava Sussman
Daughter of Jennifer and
Joshua Sussman
May 10, 2025 at 5:30pm

Maya Elish
Daughter of Matthew and
Jessica Elish
May 17, 2025 at 9:00am

Justin Cowan
Son of Jaime and
Matthew Cowan
May 17, 2025 at 11:30am

Eliana Harris
Daughter of Claudia and
Bobby Harris
May 17, 2025 at 6:00pm

Hart Lazarus
Daughter of Perry and
Erica Lazarus
May 31, 2025 at 5:30pm

Dylan Sherman
Son of Brett and
Crystal Sherman
June 14, 2025 at 11:30am



Eliana Harris




Hart Lazarus



Dylan Sherman

2025-26 RELIGIOUS SCHOOL REGISTRATION




tbeboca.org/religious-school

RELIGIOUS SCHOOL REGISTRATION FOR 2025-2026 IS OPEN WITH EXCITING NEW OFFERINGS!

- **Sunday, Tuesday and Wednesday program options for elementary-aged students**
- **3 program options for 8th graders**
- **Flexible options for 8th-12th Graders**

Scan the QR code to enroll, classes start August 17!



Sisterhood Book, Brunch and Mimosas

Sunday, July 13

11:00am – 1:00pm

Schaefer Family Campus

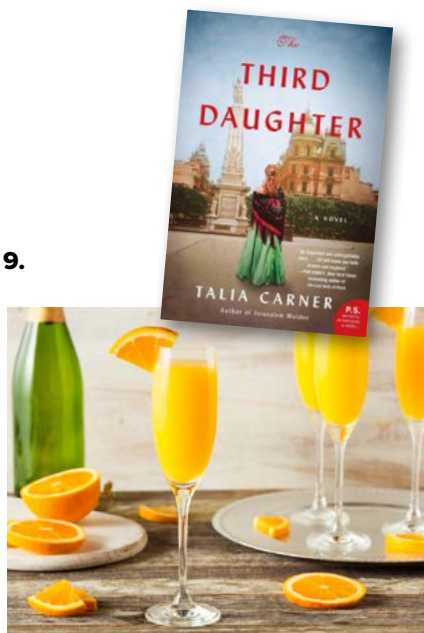
Members: \$36; Guests: \$42

Prices increase Monday, July 7.

Registration closes Wednesday, July 9.

Join Sisterhood for mimosas and a delicious brunch catered by The Sticky Bun as Rabbi Laila leads a discussion of “The Third Daughter” by Talia Carner. Inspired by little-known true events, Carner tells the remarkable story of the thousands of young Jewish women who were trafficked into prostitution at the turn of the 20th century, and whose subjugation helped build Buenos Aires. “The Third Daughter” brings to life a dark period of Jewish history and gives a voice to victims whose truth deserves to finally be told.

Event Co-Chairs: Susan Goldstein and Annie Brickel



ROSH CHODESH DOES ANYBODY HAVE A MAP?

Using Jewish Teachings and Prayer as a Road Map to Understanding Ourselves and the World Around Us

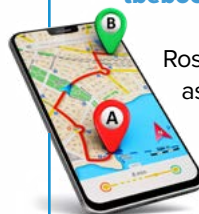
One Sunday a Month

from 9:15-11:00am

May 25

Beck Family Campus

tbeboca.org/rosh-chodesh



Rosh Chodesh, literally translated as, “the new month,” has long been considered a holiday gifted to women - when we take time to focus on our own personal growth. Join us to connect with other women, grow and reflect on the month that has passed, breathe, and give yourself the gift of time to focus your intentions for the month ahead. All women are welcome and refreshments will be served.

BROTHERHOOD

Mother's Day Brunch

Sunday, May 11

11:00am - 1:00 pm

Schaefer Family Campus

Join us for Brotherhood's highly anticipated Mother's Day Brunch! Enjoy delicious food, music, and quality family time as we celebrate the most important woman in our lives. This event is the best deal in town and always sells out quickly, so be sure to register early!

Adults and Young Adults (Ages 13+): \$54

Children (Ages 6-12): \$25

Children (Ages 5 and under): Free

Prices increase by \$10 on Thursday, May 1.

Register at tbeboca.org/brotherhood



**BEIT KNESSET | HOUSE OF GATHERING
AROUND BETH EL**





DONATIONS & DEDICATIONS

as of January 16, 2025 – March 15, 2025

Amy S. Klein Shapiro Memorial Educational Fund

in memory of:

Amy S. Klein Shapiro by Penny & David Klein

Anna Beitscher Memorial Scholarship Endowment Fund

in honor of:

Jim Brachman's birthday by Lisa & Neil Lieberthal

Jim Brachman's 92nd birthday by

Esther & Robert Printz

Jim Brachman's birthday by Suzanne Pritzker

in memory of:

Dr. Arnold Berliner, Rita Verbin, Jack Liebman,

Nathan Eder & Belle Eder by Jim Brachman

Annual Giving

Carol Himmel & Hank Himmelbaum

Beth El Bash Scholarship Fund

George Brown

Phyllis Brucker

Barbara Diamond

Robin Eisenberg & Andrea Broido

Sandra Emerman

Debi & Herb Jackman

Penny & David Klein

Barbara & Jerry Lewin

Myrna & Norman Ricken

Sara & John Sundheim

Ronna & Marc Taub

Eleanor & Norman Weiss

Lisa & Kenneth Young

BE The Future Endowment Campaign

Danielle & Rob Butler

Natalie Cohen

Rita & Richard Diamond

Aline Fisher

Mandy & David Friedlander

Casey & Jonathan Levin

Debra & Joshua Marcus

Brooke Perez

Marcy & Barry Schultz

Dina & Andrew Schwartz

Susie & Micha Siegel

Marisa & Brian Spiro

Wendy & Steven Walin

Lois & Harold Weber

in appreciation of:

Rabbi Dan Levin, Cantor Lori Brock, & Rabbi Laila

Haas for your kindness & support during

our time of loss by Wendy & Steven Walin

in memory of:

Michael Walin by Judith Chason

Michael Walin by Emily & Richard Cohen

Michael Walin by Marcia Gerson & Scott Glincher

Michael Walin by Claudia Grillo

Michael Walin by Elinor & Jay Josephson

Michael Walin by Janet Serle & Ira Malin

Michael Walin by Rona & Sandy Steinberg

Michael Walin by Janet & Allan Sussberg

Michael Walin by Temple Beth El Board of Trustees

Disaster Relief Fund

[To support those affected by the wildfires in California]

Ellen & Dan Arkush

Roberta Caplan

Sandi & Ed Fried

Laurie & Jonathan Greene

Vera & Martin Hirschhorn

Jan & Allen Lev

Stephanie & Steven Schuster

Nancy & Barry Sinrod

in memory of:

Howard Freeman by Helene & Jay Eichler

Early Learning Center Contributions

for the Mi Sheberach of:

Regina Kanner by Wendy & Sam Kanner

in memory of:

Andrea Shapiro by Stephanie & Steven Schuster

Irving Minkin by Randee & Howard Solomon

Rita Slootsky by Adrienne Bergen

Rita Slootsky by Carol & David Gart

Rita Slootsky by Beth Krakower

Rita Slootsky by Jody, Jenna & Barry Leace

Rita Slootsky by Carol Nelson

Rita Slootsky by Jamie Roth

Rita Slootsky by Marsha & Gary Slade

Rita Slootsky by Pam Nadler & Mark Sickles

Gelfand-Arpe Young Children's Innovative Education Endowment Fund

in honor of:

Joshua Sackel's Bar Mitzvah by Michael Gelfand

General Endowment Fund

in memory of:

Michael Walin by Marci & David Kessler

Michael Walin by Barbara Silver & Steven Willner

General Fund

Anonymous

Stacy Ames

Amy & Joshua Goldman

Mazel Tov To

From February 14, 2025 through March 25, 2025

Deborah and Jack Berger on the marriage of their daughter, Laura Berger to Hank Schabot

Elizabeth and Lawrence Dinner on the marriage of their daughter, Phoebe Dinner to Matthew Josephs

Justin Patton and Lauren Shoenberg on their marriage

Marcy and Barry Schultz on the marriage of their daughter, Skylar Schultz to Yotam Evgi

Michael Turetzky and Kim Holbrook on their marriage

Karli and Todd Baker on the birth of their daughter, Savannah Baker, big brother and sister Maverick and Waverly

Marissa Acker and Derek Carnicom on the birth of their daughter, Olivia Charlotte Carnicom, big brother Bennett

Lisa and Alan Kirschenbaum on the birth of their granddaughter, Quinn Ivy Kirschenbaum

Lily Yurchyshyn and Alexander Pepper on the birth of their son, Alan Pepper, big brother Mason

Someya and Eugene Poverni on the birth of their son, Asher Guy Poverni, big sister and brother Sloane and Ari



**Florida State Licensed and Accredited
Home Health Agency**
No Membership-Fee Concierge Services

**Over 35 Years of Trust, Quality, and Compassionate Care
In Palm Beach and Broward Counties**

Services Provided Under the Supervision of a Licensed and Registered Nurse

Medication Reminders ⊗ Personal Care Assistance including bathing, grooming, dressing ⊗ Memory Care Assistance with Alzheimer's and Dementia ⊗ Respite for Family Members ⊗ Companionship and Social engagement ⊗ Hospital to Home Transition ⊗ Geriatric care ⊗ Transportation to Doctor's Appointments ⊗ Grocery Shopping ⊗ Meal Preparation ⊗ Light Housekeeping ⊗ Complex Cases

We Accept All Long-Term Insurance Plans and Private Pay

Call Us Today, for a Complimentary Consultation

Broward: (954) 427-4546 ⊗ Palm Beach: (561) 912-9511

www.atlanticallcare.com

Licenses: HHA20113096, HHA299996075



Trusted, Comfortable and Caring Dentistry

- Highest Quality Dental Care
- State of the Art Digital Imaging
- Experienced and Caring Staff

Five Stars ★★★★★ on [Google](#) and [yelp](#)



We are currently accepting new patients so please call us today!

D.A. ROLFE, DDS, PA

333 Camino Gardens Boulevard • Boca Raton Florida 33422
www.DrRolfe.com • Phone: 561.395.4500

Proudly caring for Temple Beth El families for over 20 years!

DOUGLAS A ROLFE, DDS, PA COSMETIC AND FAMILY DENTISTRY



DONATIONS & DEDICATIONS

as of January 16, 2025 – March 15, 2025

Susan & Jeffrey Rudnick
Gail Weisbaum

in honor of:

Joshua Sackel's Bar Mitzvah by
Barbara & Bruce Booken
Dennis Gilbert by Steve Katz

in memory of:

Sylvia Shildkrout by Nancy & Joshua Bailin
Michael Walin by Judith Beiner
Howard Freeman by Andrew Cohen
Joan Kramer by Julie & Mark Danetz
Lena Rosenbaum by Elaine Epstein
Herman Lebersfeld by Murray Feiss, Andrea &
Robert Greene, and June & Ron Hersh
Herman Lebersfeld by Keith Goldbaum
Robert Halpern's father by Ursula & Leonard Hess
Rita Sloatsky by The Hoffman family
Joan Kramer by Melvyn Kramer
Edward Burns by Deborah & Larry Kull
Muriel Buchberger by Carol Lustig
Herman Lebersfeld by Wendie & Stephen Ploscowe
Ellie Lifton by Kathleen Reilly
Andrea Shapiro by Nancy Rosengard & Martin Pine
Joan Kramer by Ann & Michael Swartz
Michael Walin by Jill Viner
Howard Freeman by Eileen & Harris Sandler
Rita Sloatsky by Carole & Donald Sider

Giving Tree

Sharon M. Brick
Rebecca Elman & Andrew Levy
Loggers' Run Middle School
Carol Lustig

in appreciation of:

Cheryl Willner by Aline Fisher
Patty Beck by Aline Fisher

in celebration of:

Skylar & Yotam's marriage by Aline Fisher

in honor of:

Sherry & Dan Weinberger by Judith Chason
Skylar Freedman's Bat Mitzvah by
Susie & Mark Tabor

in memory of:

Rita Sloatsky by Betsy & David Blechman
Gary Malkin by Eddie Elman
Edith Stein by Aline Fisher
Michael Walin by Aline Fisher
Sylvia Shildkrout by Linda Glastein
Joan Kramer by Sandra Griffel
Joan (Joni) Kramer by Sandi Holzman
Joan Kramer by Sandi Holzman
Estelle S. Teller by Judith Kaye
Sylvia Shildkrout by Harriet & Richard Litzky
Michael Walin by Ilyne Mendelson & Steve Terk
Howard Freeman by Carole & Stuart Potter
Nat Nelson Nast by Barbara Saletan & Paul Knapp
Sylvia Shildkrout by Wendy & Steven Walin
Max Unger by Aline Fisher

Glenn & Laurie Borden Endowment Fund

Laurie & Glenn Borden

Israel Youth Travel Fund

in honor of:

the birth of Elinor & Jay Josephson's grandson,
Ari Reid Josephson by Phyllis Brucker
Elinor Josephson by Aline Fisher
Jay Josephson by Aline Fisher
Alan Klasfeld by Aline Fisher

Marion & Milton Hoffman/Florence & Morris Schwartzfarb Endowment Fund

in memory of:

Marion & Milton Hoffman by Susan
& David Schwartzfarb

Margie & Maurice Plough Youth Scholarship Fund

in memory of:

Michael Walin by Margie & Maurice Plough

Mausoleum Endowment Fund

in memory of:

Michael Walin by Catherine & Reed Edelman

Music Fund

Margie & Maurice Plough

in appreciation of:

Cantor Jake Harris for the Bar Mitzvah of
Jonah Kreiger by The Kreiger family

in honor of:

Neil Niren by Aline Fisher

Myra R. Schwartz Cantorial Music Fund

in appreciation of:

Cantor Lori Brock for officiating the unveiling
for Herbert I. Krickstein by Renee Kay

in honor of:

Cantor Lori Brock's birthday by Phyllis Brucker
Maurice Plough's birthday by Phyllis Brucker
Kayla Brock & Jordan Grabski's
wedding by Freyda Burns
Cantor Lori Brock by Debbie & Edward Ellman
Madison Leitner's Bat Mitzvah, with appreciation for
Cantor Lori Brock by Jaclyn & Jonathan Leitner

in memory of:

Gloria Kline by Phyllis Brucker

on the occasion of:

the marriage of Kayla Brock by Aline Fisher

Rabbi Merle E. Singer Scholarship & Educational Fund

in memory of:

Brenda Singer by Phyllis Brucker

Rabbis' Discretionary Fund

Linda Brandon
Cheryl & Peter Firestone
Kim Holbrook & Michael Turetzky
Rita Judson
Terri & Russell Meyers
Chavurah Mishpuchah Ohr
Phyllis Robinson & Robert Winess

in appreciation of:

Rabbi Greg Weisman for officiating the minyan
in memory of Janet Krasilnick Capolino
by Karen Davis & The Capolino family
Rabbi Dan Levin for his leadership & warmth
on our Argentina trip by Aline Fisher
Rabbi Dan Levin & Bimah honor for
kiddush by Dale Keiter
Rabbi Greg Weisman for the Bar Mitzvah of
Jonah Kreiger by Laura & David Kreiger
Rabbi Dan Levin for his leadership of
this vibrant spiritual congregation
by Susan & Jeffrey Rudnick
Temple Beth El's clergy for officiating our mother's
funeral by Jill & Alan Sloatsky, Sharlene &
Stephen Sloatsky, and Judy & David Cohen
the warm & gracious welcome to Temple
Beth El by Carole & Jay Sterling

in celebration of:

Beverly & Jack Fox's 70th anniversary
by Sheila Harrow

in honor of:

Ellie Pomerantz's 90th birthday by Brenda Bello
Rabbi Dan Levin by Cantor Lori & George Brock
our wedding by Susanne Coyne & Roy Filinson
Arnold Granet's 90th birthday by
Helene & Jay Eichler
the 70th birthday of my beloved husband, Jesse
Adam Finkelstein by Mary Finkelstein
our grandchildren by Beth & Dale Frost
Madison Leitner's Bat Mitzvah by
Jaclyn & Jonathan Leitner
Lauren Liebmann's birthday by Eleanor Liebmann

in memory of:

Joseph Arkush by Ellen & Dan Arkush
Herman Lebersfeld by Jane & Michael Baker
Leo Breittholz by Dori Barenholtz
Howard Freeman by Marjorie Berg
Michael Walin by Betsy & David Blechman
Dr. Richard Brietstein by Barbara Brietstein
Joni Kramer by Fredda & Leonard Broverman
Joan Kramer by Freyda Burns
Mark Sandoval by Judith Chason
Ed Burns by Tamra & Albert Cotugno
Arnold Berliner by Helene & Jay Eichler
Gussie M. Block by Elaine Erenstein

Does your Ob-Gyn value an integrated approach to your care?

Tired of not feeling your best?

Want to be as healthy as you can be but don't know where to start?

CALL 561-826-3800

We answer with individualized care for women at all stages of life.



TERRENCE W. HARRIS, MD
WOMEN'S WELLNESS EXPERT




WOMEN'S
WELLNESS CENTER

OBSTETRICS | GYNECOLOGY | WELLNESS



Call 561-826-3800
www.harrisobgyn.com

VISIT HARRISOBGYN.COM OR CALL. WE CAN HELP.
2500 North Military Trail Suite 111 Boca Raton, Florida 33431

WE PUT THE CARE IN HOME CARE

SKR Home and Health Care Solutions offers private nursing services designed to meet your needs. With compassion, empathy and personalized attention, our team of Registered Nurses (RN) will assist you with the excellent, higher level of care you deserve and require.



Contact us today!

610-488-2193

skrhomehealth.com

More Than Elder Care – We Do it All

Expert post-surgical transportation:

Orthopedic, plastic, and more

Dedicated care to prevent complications and infections

Short-term and long-term care options

Available 24-7 for all ages and needs

Nursing Services Include

- Private discharge planning
- Respite care
- Evaluation
- Education
- Errands
- Ambulation
- Personal care
- Medicine management/Prescription refill
- Meal preparation
- Doctor's appointments/Transportation

DONATIONS & DEDICATIONS

as of January 16, 2025 – March 15, 2025

Jay Tabatchnick by Elaine Erenstein
Herman Lebersfeld by Jack Fleischer
Robert Fleishman by Stephanie Fleishman
Janet Capolino by Martha & David Goodkin
Mark Sandoval by Martha & David Goodkin
Ronni Knapp by Paul Knapp
Joan S. Kramer by Melvyn Kramer & family
Howard Freeman by Marion Lang
Michael Walin by Jan & Allen Lev
Howard Freeman by Donna Lifland
Rita Slootsky by Brooke & David Lukes
Joan Kramer by Sima & Cliff Malat
Michael Walin by Carol & Neil Niren
Michael Walin by Susan & Barry Podolsky
Andrea Shapiro by Susan & Barry Podolsky
Edwin Polokoff by Georgina Polokoff
Carl Meyers by Lisajane & Kevin Romer
Mathew Forbes Romer by Lisajane & Kevin Romer
Joan Kramer by Joni & Tom Rosenfield
Jack Liebman by Martha Ellie Roth
Joan Kramer by Susan & David Schear
Carl Feuerstein by Robin & Gary Schear
Clara Sherman by Rita Schuster
David Sherman by Rita Schuster
Floretta Glinsky by Stephanie & Steven Schuster
Joni Kramer by Nancy & Barry Sinrod
Joan Kramer by Franci & Adam Steinberg
Arnold Berliner by Susie & Mark Tabor
Edith Stein by Susie & Mark Tabor
Betty Taub by Ronna & Marc Taub
Andrea Shapiro by Robin & Gary Warren
Dr. Marc Cooper & Raymond Cooper by
Marissa Cooper & Shawn Warmstein

on the occasion of:

the Bar Mitzvah of our son, David Diaz-Padua;
with deep appreciation & gratitude for Rabbi
Dan Levin, Cantorial Soloist Michelle Cohen
& the entire clergy and staff of Temple Beth
El by Daniela Diaz-Padua & Ignacio Diaz

to thank:

Rabbi Dan Levin for his amazing job with
Skylar Freedman's Bat Mitzvah
by The Freedman family
Rabbi Greg Weisman for his guidance, wisdom,
& support throughout Declan's Bar Mitzvah
journey by Elizabeth & Evan Gluck
Rabbi Greg Weisman for officiating at our mother's
funeral by Shelly & Bruce Hoffman
Rabbi Elana Rabishaw & Cantorial Soloist Michelle
Cohen for helping Amy reach her Bat
Mitzvah, and for a beautiful & memorable
service by Luisa & Mark Werner

with gratitude:

for the entire clergy and staff for their constant
comfort & support by Freyda Burns

Sisterhood Contributions

Irene & Merrill Epstein

in memory of:

Harriet Jacobson by Golda's Chavurah
Jack Liebman by Irene & Merrill Epstein
Jack Liebman by Aline Fisher
Jack Liebman by Jan & Allen Lev
Andrea Pat Shapiro by Jan & Allen Lev

on the occasion of:

the birth of Mallory Claudia Epstein by Aline Fisher

Steve Brown Endowment Fund

in memory of:

Marjorie Bromfield by Bonnie Pantel

Susan & Barry Podolsky Special Needs Fund

in memory of:

Herman Lebersfeld by Freyda Burns

The Slaine Family Holocaust Remembrance & Education Endowment Fund

Mason Slaine

Tzedakah Fund

Kara Castaneda
Caryn Dunayer
Sylvie Heyman
Fern Kanter & Scott Gershaw
Alexis Newman & Charlene Myers
Stephen D. Nechtow
Barbara Segal
Myrna Sirowitz
Lisa Swartz & Mitchell Gross
Minelle & Alfredo Tendler

in honor of:

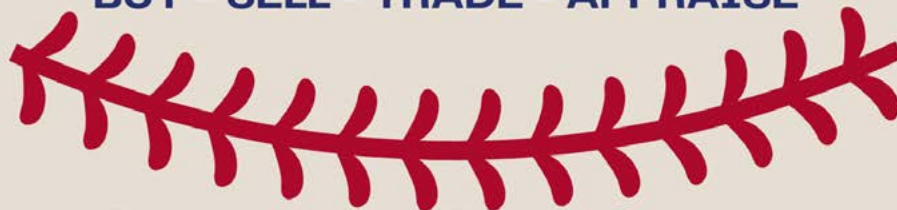
Rabbi Greg Weisman by Rosy Lofer
Rabbi Dan Levin by Rosy Lofer

Yahrzeit Fund

Bernice Ellis by Jannette Abejean
Karen Kelrick by Priscilla & Leonard Adler
Mildred Barenholtz by Dori Barenholtz
Marlene Rosenbaum by Lori & David Bargas
Sylvia Baron & Gerald Baron by Mitchell Baron
Ann Barr by Stephen Barr
Joseph Arkush by Kelly Barrie
Louis Feil by Marilyn & Stanley Barry
Richard Cecil Basker by Allison Basker
Bethann Baskies by Jack Baskies
Robert Bell by Marc Bell
Samuel Berenson by Felice Berenson
Dennis Berg by Marjorie Berg
Syd Berliner by Eileen & Steven Berliner
Julian "Dick" Bernstein by Dorothy Bernstein
Martha Bernstein, Samuel Bernstein, &
Sidney Stein by Dorothy Bernstein

Joy Pollack by Shelli & Gary Bettman
Michael Walin by Judith Blackman
Martha Maier by Judith Blackman
David Joseph Viggiano, Jr. & Adam Michael
Viggiano by Judith Blackman
Spencer Blakeslee by Barbara Blakeslee
Dorothy Small by Laurie & Glenn Borden
Lila Borden by Laurie & Glenn Borden
Jane Bransdorf Cutler by Beverly &
Marvin z"l Bransdorf
Richard Bransdorf by Beverly &
Marvin z"l Bransdorf
Harry Brier by Beth & Bruce Brier
Mary Catherine Ficara by George Brown
Walter Brunswick by Murray Brown
Spencer Carver by Nancy & David Carver
Ronald Simon by Judith Chason
Robert I. Chavis by Jan & Richard Chavis
Hannah Chestnov by Sheila & Robert Chestnov
Sigmund Atterman by Sheila & Robert Chestnov
Carolyn Cohen by Helaine Cohen
Bruce Cohen by Laurie Cohen & Rick McArdle
Morris Cohen by Susan Cohen
Harvey M. Cohen by Susan Cohen
Selma Mitrani by Myrna & Lenny Comerchero
David Bossie by Julie & Terry Cooper
Steven Lewis Bossie by Julie & Terry Cooper
Nat Copulsky by Maxine & Joseph Copulsky
Michael Walin by Andrea Corn
Beverly Bronfman by Alene & Richard Court
Robert Degen by Jeffrey Degen
Henrietta Nudelman & Theresa Klein
by Ruth & Ralph Delman
Dr. Nathan S. Deutsch by Roberta Deutsch
N.G. Kaul by Tia & Grant Disick
Alter Friedman by Amy Doran
Eli S. Egert by Dana Egert
Sidney L. Karp, Miriam Swerdloff-Karp, Arnold
Eisenberg, & Eileen Eisenberg by Fran
Karp-Eisenberg & Michael Eisenberg
Phyllis Elman by Eddie Elman
Ida Herbach by Diane Epstein
Ethel Goldblatt by Elaine Erenstein
Rosalind Gorman by Diane & Joseph Feldman
Paul Fiebigler by Susan & Stephen Feldman
Alice Fiebigler Widrow by Susan & Stephen Feldman
Dr. Martin Feuerman by Marni & Michael Feuerman
Edith Trieber by Edward Trieber
Sam Pascal by Terri Fine
Corinne Fiorillo by Andrew Fiorillo
George Fish by Phyllis Fish & family
Doris Zipkin Fish by Phyllis Fish & family
Sidney M. Frager by Nancy & Marc Frager
Bernard Hauser by Hollis & Jeffrey Freimark
Rose Gottlieb by Adele Friedland
William Gottlieb by Adele Friedland
Jacob Shufro by Leslie & Bernard Friedman
Bernard P. Wiesenthal by Barb & Lee Friedman
Benjamin Garfinkle by Rani Garfinkle
Sandy Garfinkle by Rani Garfinkle
Pearl Shapiro by Nancy & Dennis Gilbert
Ruth Greenberg by Cindy Gitlitz

BUY - SELL - TRADE - APPRAISE



Scott M. Goodman

5030 Champion Blvd. Suite G11

Boca Raton, FL 33496

Private Collector Since 1984
of All Baseball Cards and Memorabilia



561-703-4322

thegoods11@aol.com

ONE OF A KIND COLLECTIBLES & FREE APPRAISALS



FUNERAL DIRECTORS SINCE 1892

Guttermans
Warheit MEMORIAL
CHAPEL

*One of The Largest
Family Owned & Operated
Jewish Funeral Homes
Since 1892*

Directors:

**PHILIP GUTTERMAN • STEVEN KANOWITZ
KENNETH J. LASSMAN**

Leading Pre-Arrangement Specialists for all your Medicaid & Estate Planning Needs.
In Home Appointments Available

7240 North Federal Hwy, Boca Raton FL 33487

1-800-992-9262

Serving Miami-Dade, Broward, Palm Beach & Martin Counties

*In Greater New York, Guttermans Inc.: ROCKVILLE CENTRE, L.I. 516-764-9400
WOODBURY, L.I. 516-921-5757 • BROOKLYN 718-284-1500*

MONUMENTS BY GUTTERMAN'S www.guttermansinc.com



*Senior
Living
Rooted in
Tradition and
Care*

Experience the warmth of **SunScape™ Boca Raton**, where exceptional care meets Jewish traditions in a vibrant, welcoming environment. Our assisted living and memory care community embraces connection, offering weekly Shabbat services, Jewish classes, and holiday observances that honor faith and heritage.

As Boca Raton's newest premier senior living community, we provide personalized support, engaging programs, and a lifestyle designed for comfort and well-being. Discover a place where tradition and modern luxury come together—because home is where you feel most connected.

Schedule a tour today!
Call (561) 327-3806 or visit
[SunScapeBocaRaton.com](https://www.SunScapeBocaRaton.com).

22501 Boca Rio Road, Boca Raton, FL 33433
Assisted Living Facility #13825



DONATIONS & DEDICATIONS

as of January 16, 2025 – March 15, 2025

Ronald Glanzman & Adam Goldberg by Amy Glanzman
Rose Parzen & Helen Goldberg by Ruth & Harry Goldberg
Louis H. Goldberg by Sandy Goldberg
Goldie Levine by Martha & David Goodkin
Jerry O'Connor by Amy O'Connor Goodman
Marvin H. Ruttenberg by Ilene Greenberg
Sharon Joy Ruttenberg-Greenberg by Karyn & Stuart Grossman
Herbert Grossman by Susan Grossman
Arthur William Herlihy by Henry Harman
Blossom Cohen by Sheilah Harrow
Marvin Sherman by Alma Herman
Donna Higier-Attermann & Julius A. Higier by Dorene Higier
Joseph Himmelstein by Brigitte & Bruce Himmelstein
Jean K. Himmelstein by Brigitte & Bruce Himmelstein
Michael David Soloman by Carol Himmel
Sylvia Manoff by Robin Hirsch
Dr. Harry Hotz by Larry Hotz
Noreen Rubin by Ellen Isenson
Florence Jablon by Shari & Howard Jablon
Norma G. Rosenfeld by Debi Tucker Jackman
Morris Tucker by Debi Tucker Jackman
Morris Jacobs by Diana & Jonathan Jacobs
Stanley Jaffe by Elaine & Scott Jaffe
David Fishman by Grace & Jack Jaiven
Nathan Jay by Barbara & David Jay
Harry Jerome by Leslie & Stephen Jerome
Beverly Smutnak by Rita Judson
Lena Gertz by Valdene Kane
Lillian Dworkin by Valdene Kane
Adele Kanter by Fern Kanter & Scott Gershaw
Joni Kramer by The Karol family
Mary Kaufman by Karen Kaufman
David Sherman by Selma Koppelman & family
Carl Koppelman by Selma Koppelman & family
Maxine & Douglas Johnstone by Maxine Kornitzer
Stuart Krackow by Dorene Krackow
Martin Birnbaum, Harriet Jacobson, Helen Krause, Helen
Reichel, & Sidney Reichel by Judy & Eliot Krause
Yetta Sherman by Carole & Stuart Krosser
Barry Fuller by Amy & James Kuntz
Milton Isenberg by Linda & Gerald Labourene
Hymie Silver by Brenda & Barry Leeper
David Klavons by Barbara & Jerry Lewin
Henry Lewin by Barbara & Jerry Lewin
Harry Lichtenstein by Sue Lichtenstein
Estelle Lifton by Martin Lifton
Irving Morris by Judith Lipsky
Arie Lofer by Rosy Lofer
Celia Grossman by Zelda Luxenberg
Carol Magod by Buddy Magod
Edith Markel by Carl Markel
Earl McCoy by Joshua McCoy
Harry Bleiberg by Lisa & Stephen Mendelsohn
Stuart Bader by Maxine & Stephen Miller
Hilda Novick by Barbara Morris
Joseph Morrone by Maureen & Nicholas Morrone
Corrine Greenberg by Robert Nagler
Joan Kramer by Elsie & David Navisky
Audrey Neimark by Fredda & Richard Neimark
John Fryer by Lottie & Erik Nilsen
Mickey Nusbaum by Sheri Nusbaum
Harold Savage by Sheri Nusbaum
Eber Levine by Ellen O'Connell

TSS
PHOTOGRAPHY™

PROFESSIONAL HEADSHOTS

PHOTO BOOTH

the SMILE Station

EVENTS, CELEBRATIONS, TOURNAMENTS

FIND OUT MORE!

CALL ★ TEXT ★ EMAIL ★ ★ ★ ★ ★

Rachel Sherman: (954) 649-3032
Rachel@tss.photography

Local expertise
with global reach.

FROM DEERFIELD BEACH, BOCA RATON,
DELRAY BEACH, BOYNTON BEACH AND
SOUTH PALM BEACH.

Let's Connect
ROSY LOFER
GLOBAL REAL ESTATE ADVISOR
786.301.0300
RLOFER@ONESOTHEBYREALTY.COM
ROSYLOFER@ONESOTHEBYREALTY.COM

VISIT MY WEBSITE

Proudly serving
my community
for over 30 years.

EXPERIENCE+KNOWLEDGE=RESULTS

ONE | Sotheby's
INTERNATIONAL REALTY

Beth El Mausoleum expansion
is open for sales,
with **SPECIAL CONSTRUCTION PRICING**
that won't last.

Beth El Mausoleum

Call Mausoleum Director, Mike Sirowitz at 561-314-2841
or email mike@tbeboca.org to set up an appointment.

DONATIONS & DEDICATIONS

as of January 16, 2025 – March 15, 2025

Harry Poritz by Esther Poritz-Oknowsky
 Muriel Silverman by Ellyn Okrent
 Jan Pachl & Lev Pedvis by Carole Pedvis
 Dorothy Katz by Natalie Pelavin
 Dorothy Katz & Michael A. Pelavin by Natalie Pelavin
 Isadore Mandel by Diane Perkins & Paul Mandel
 Mary A. Perper & Harold E. Perper by Irwin Pescov
 Rachel Pollock Wurman by Ellen & Edward Pollock
 Herman Pollock by Ellen & Edward Pollock
 Jody Press by The Press family
 Eileen Press by The Press family
 Arnold L. Putterman by Laurie & David Putterman
 Dr. Morton Lewis Singer, Judith Singer, & Irving Lapidus
 by Raymond James Charitable Endowment Fund
 Jonathan Redler & Dr. Martin Press by Sherry Redler
 Shirley Reichman by Robert Reichman
 Judy Hoffman by Jill Hoffman Rispler
 Arnold Robbins by Dana & Steven Robbins
 David Jaffe by Mindy Jaffe-Rogers
 Maurice Rosenthal by The Rosenthal family
 Idah Robins by Bruce, Meryl, Brooke & Blaire Rosenwater
 Ben Roth by Martha Ellie Roth
 Herbert N. Lesser by Gloria Rothstein
 Laurette Goldberg by Lee & Isidor Rotter
 Joseph Rubenstein by Myra Rubenstein
 Noreen Rubin by Risa & Ronald Rubin
 Josh Pumphrey by Brett Schneider
 Steven Schulman by Maureen Schulman
 Michael Walin by Sandy & Tadd Schwab
 Gussie Schwartz by Joanne & Barry Schwartz
 Marion & Milton Hoffman by Susan & David Schwartzfarb
 Harvey Steven Selenow by Karen Selenow
 Frances Friedman & Edith Shafer by Roberta & Lorrie Shafer
 Jack Kaufman by Rhoda Shapiro Kaufman
 Joshua Shapiro by Marilyn & Frederick Shapiro
 Gerald Jaffe by Jill & Doug Sherman
 Samuel W. Sherman by Robert Sherman
 Sylvia Folbaum by Robert Sherman
 Marie Sherman by Laurie Silvers & Mitchell Rubenstein
 Joni S. Kramer by Jane W. Singer
 Brenda Singer by Rabbi Merle Singer
 Herman Lebersfeld by Janice Skoloff
 Max Kaplan by Beverly Stewart
 Howard Freeman by Donna & Matt Stieglitz
 Frances Levine by Alice & Samuel Stockhamer
 Claude Gozlan by Dominique & Steven Strom
 Robert Little by The Sundheim family
 Carol Swillinger by Mark Swillinger
 Harry P. Tabor by Susie & Mark Tabor
 Sidney Buksbaum by Barbara Tamchin
 Harry Thal by Sonny Thal
 Michael Walin by Pam Tinkham
 Joseph Arkush by Pam Tinkham
 Ilsa Silver by Jill Viner
 Stuart Cummings by Robin & Gary Warren
 Elsie Weidenfeld & Beatrice Goldberg by Joan & Tom Weidenfeld
 Leah & Abraham Epstein by Jill & Paul Weiner
 Emma Goldblum Fleegler & Dr. Saul M. Fleegler
 by Lois & Gary Weinstein
 Sandra Weinstock by Sharon Weinstock
 David Weiss by Karen & Howard Weiss
 Dr. Barbara Ann Turkell-White by Pat White,
 Jenna Cohen & India Turkell



We Are Family

JFS Ruth & Norman Rales
Jewish Family Services

**Always here when
You need Us.**

SERVICES AT A GLANCE

- Behavioral Health Services
- Family & Children's Services
- Food & Financial Assistance
- Philanthropy & Volunteerism
- Senior Services

#WeAreFamily

To learn more, please call (561) 852-3333
www.ralesjfs.org | 21300 Ruth & Baron Coleman Boulevard, Boca Raton, FL 33428

Morgan Stanley

**The Harbor Financial Group
at Morgan Stanley**

"Service designed to help affluent investors protect and
simplify complex wealth with orchestrated financial care"



Eric Applewhite, CFP®, CPM® Managing Director—Wealth Management,
Financial Advisor, Senior Portfolio Management Director;
Howard Guggenheim, Senior Vice President, Wealth Management,
Financial Advisor, Senior Portfolio Management Director;
Daniel J. Guggenheim, CFP® Senior Vice President, Financial Advisor;
Jeffrey Guggenheim, Financial Advisor

**595 S. Federal Highway, Suite 400
 Boca Raton, FL 33432
 +1 (561) 393-2035
fa.morganstanley.com/harborfinancialgroup/**

L-R: Jeffrey, Howard, Daniel and Eric
 CFP Board owns the mark CFP® in the U.S.
 Morgan Stanley Smith Barney LLC. Member SIPC.
 CRC 6542745 04/24

Edith Gordon & Betty Wulkan by Marilyn Wulkan
 Harvey Zipkin by Barbara Zipkin
 Linda Zipkin by Daniel Zipkin
 Jerome Cantor by Carolina & Darren Auster
 Andrew Todd Auster by Carolina & Darren Auster
 Irwin Auster by Carolina & Darren Auster
 Claire Jampolis by Judith Beiner
 Teodora Bautista, Serafin Bautista, Carol Bromson, & Burton
 Bromson by Reginee & Mark Bromson
 Jack Liebman by Julie & Terry Cooper
 Sam Deutsch & Gertrude Deutsch by Shirley & Warren Deutsch
 Ellis Disick by Tia & Grant Disick
 Isaac Cohen by Carol & Ted Enfield
 Paul Enfield, Frances Enfield, & Lisa Enfield by Carol & Ted Enfield
 Gertrude Freeman by Katherine Freeman-Costin
 Professor Murray L. Weidenbaum by Susan & Richard Goldstein
 Nelson Klein by Leonie Klein
 Linda Nagler by Robert Nagler
 Rose Gianat by Barbara Gianat & Barbara Rachells
 Emil Acks by Dina Rosenblatt
 Leona Edelman by Linda & Jeffrey Yankow
 Jerome Yankow by Linda & Jeffrey Yankow



Home...
 where life
 is a celebration
 and memories
 are made.



interiors by
shellypreziosi
 allied member asid

561•289•7613

Interior Design
 new construction and renovation
 kitchens | bathrooms | finishing touches

Allied ASID
 AKBD
 IDA

TOSHIBA

**Boost your business
 performance with Toshiba's
 cloud and print solutions.**



Vicki Cohen
Document Solutions Specialist
 185 NW Spanish River Blvd, Ste 230
 Boca Raton, FL 33431
 vicki.cohen@tbs.toshiba.com
 (561) 901-7546

business.toshiba.com

©2025 Toshiba America Business Solutions, Inc. Electronic Imaging Division. All rights reserved.

**Consistency
 is Everything**

MEDICAL CLEANING / EVS

JANITORIAL & PORTER SERVICES

POST-CONSTRUCTION CLEANING

HYGIENE RISK MANAGEMENT

PRO DISINFECTION

SPECIALTY CLEANING

- EXTERIORS
- FLOORS
- WINDOWS

**Total
 Cleaning**
 Since 1989

1.866.TOTAL89
TotalCleaning.com



RELIGIOUS MOHEL

Andrew H. Krinsky M.D.
Obstetrician-Gynecologic Surgeon
Board Certified Religious Mohel
Anesthetic Used

(954) 980-6337
www.southfloridamohel.com



Quality Orthodontics
That Will Make You Smile :)
Boca Raton • Parkland • Coral Springs
SOFORTH.COM / @SMILESBYDR

Call to schedule your
complimentary consult today!
561-483-0072

Mission Statement

WE WELCOME

Those who are seeking to live
and support a modern Jewish life.

OUR PURPOSE

To enrich lives by generating
bonds of love through exceptional
Jewish experiences.

TEMPLE OFFICERS

Gina Shugar	President
Wendy Walin	Immediate Past President
Jeffrey Katz	Executive VP
Dina Schwartz	VP of Leadership & Governance
Joshua Marcus	VP of Finance
Marcy Schultz	VP of Religious Activities
Danielle Butler	VP Education
Joel Ivers	VP of Development
Susie Siegel	VP of Membership & Engagement
David Friedlander	VP of Social Justice
Brett Schneider	Secretary
Casey Levin	VP of ELC
Bruce Moldow	VP of Mausoleum
Patty Beck	VP at Large

TRUSTEES

George Gonzalez	Brooke Perez	Kevin Romer
Ilyne Mendelson		Marisa Spiro

LEADERSHIP COUNCIL

Andrea Halpern Altshuler	Michael Kieffer	Maurice Plough, Jr.
Marc Applebaum*	Lauren Koblick	Mark Platt*
Rachel Baron	Jennie Kreger	Barry Podolsky*
Patty Beck*	Steven Lazarus	Debbie Rosenblum
Traci Benedon	Allen Lev	Marla Schaefer
Dana Brown	Barbara Leventhal	Rabbi Merle Singer
Ignacio Diaz	Jon Levin	Mark Sunshine*
Robin Eisenberg	Rick Levitt	Leslie Viselman
Aline Fisher	Jonathan Mann	Wendy Walin*
Herbert Gimelstob*	Robyn Marcus	Monica Weinberg
Lisa Glass	Lottie Nilsen	Peter Wohgelmut
Joe Gudema	Margie Plough	

TEMPLE LEADERS OF BLESSED MEMORY

James B. Baer*	Stanford Hermann	Morris Robinson
Donald Berger	Ida Herst*	Stanley Rose
Alvin Cohen*	Joseph Q. Kline	Albert Schiff*
Frances Cohen	LTC Ben Lake	Melvin Schwartz*
Stanley Gray*	Cis Rader	Bernard H. Shulman*
	Irving Rifkin	Alan H. Weiner*

CLERGY

Rabbi Daniel Levin
Rabbi Greg Weisman
Rabbi Laila Haas
Rabbi Elana Rabishaw
Rabbi Ashira Boxman
Cantor Lori Brock
Cantorial Soloist Michelle Auslander Cohen
Cantor Jake Harris
Rabbi Emeritus Merle Singer, D.P.S., D.H.L., D.D.

SENIOR PROFESSIONAL STAFF

Steve Kaufman, EXECUTIVE DIRECTOR
Cindy Chieffo, CHIEF FINANCIAL OFFICER
Natalie Cohen, DIRECTOR OF MARKETING AND COMMUNICATIONS
Jason Reasor, DIRECTOR OF FACILITIES
Elinor Josephson, DIRECTOR OF ENGAGEMENT AND PROGRAMMING
Mike Sirowitz, MAUSOLEUM DIRECTOR
Derek Hurwitch, DIRECTOR OF DEVELOPMENT
Rita Diamond, DIRECTOR OF OPERATIONS
Susan Stallone, DIRECTOR OF SOCIAL JUSTICE

MAIMONIDES INSTITUTE FOR JEWISH LEARNING

Heather Erez, DIRECTOR OF YOUTH AND FAMILY EDUCATION AND ENGAGEMENT
Ronni Graf, DIRECTOR OF EARLY LEARNING CENTER
Robin Eisenberg, RJE, DIRECTOR OF JEWISH LEARNING AND LIVING EMERITA



**Past President
z"l - of blessed memory*

Schaefer Family Campus 333 Sw 4th Avenue | Boca Raton, FL 33432 | 561 391 8900

Beck Family Campus 9800 Yamato Road | Boca Raton, FL 33434 | 561 391 9091

tbeboca.org

Auracal

Senior Home Care, LLC



Home Health Aides, Certified Nursing Assistants, and Registered Nurses to assist you with:

- Personal Care • Companionship • Respite Care • Alzheimer's & Dementia Care • Medication Management
- Transportation • Meal Preparation • Light Housekeeping • Grocery Shopping • Post Surgery Care

Care in the Comfort of Your Home, Hospital, or Facility

Complimentary In-Home Consultation

Qualified and Compassionate Care

We Accept All Long Term Care Insurance Policies and Private Pay — Affordable Rates

CALL TODAY: 561.740.8667

1014 Gateway Blvd., Suite 101 • Boynton Beach

www.auracalshc.com

Licenses: Palm Beach NR30211558 • Broward NR30211706

PRIVATE DUTY
HOME CARE
concierge ♦
heartfelt experiences to age-in-place

We support families that are going through life-changing physical, emotional, and cognitive decline of their loved ones.

Private Duty Home Care Concierge has established 3-levels of support resources and coordination of services to assist you and your family:

Private Duty Home Care
Care Management & Life Care Planning
Family Guardian Support Services

We invite you to reach out to us for a complimentary consultation about how we can help you create solutions that address your family's unique circumstances.

561.817.2490 ♦ info@pdhcc.com ♦ www.pdhcc.com



Jill Poser, CGCM,CMC, CDCP
Principal



333 Sw 4th Avenue | Boca Raton, FL 33432

Non-Profit
Organization
U.S. POSTAGE
PAID
Boca Raton, FL
Permit No. 37

CURRENT RESIDENT OR

[Empty dashed box for address information]

DATED MATERIAL | PLEASE RUSH

A Reform congregation affiliated with The Union for Reform Judaism



BRILLIANT
Dermatology
& Aesthetics

DERMATOLOGY PERFECTED

When you come to Brilliant Dermatology & Aesthetics, you know you are seeing Dr. Norton, a highly trained board certified dermatologist who provides exceptional & personalized patient care. Dr. Norton's passion for skin health and her one-on-one approach have made her a favorite in South Florida.

**MEDICAL
DERMATOLOGY**

**CUTANEOUS
SURGERY**

**COSMETIC
DERMATOLOGY**

**AESTHETIC
SERVICES**

**SKIN
CARE**

DELRAY BEACH 5162 Linton Blvd., Suite 203
www.brilliantdermatology.com
561.877.DERM (3376)

Elissa S. Norton, MD
Board Certified Dermatologist
MIT | Harvard University
University of Miami
School of Medicine

