

the chronicle

TEMPLE BETH EL OF BOCA RATON

MAY/JUNE/JULY 2026 | SIVAN/TAMMUZ/AV 5786

Growing Up **JEWISH**

Pages 14-15

A Warm Welcome

Page 5

Annual Meeting

Pages 7-9

Shavuot

Page 18

Your Full-Service Law Firm in Boca Raton and New York City



Robin I. Bresky

SSRGA Florida Office
Managing Partner

SSRGA represents businesses and individuals in a variety of matters, including:

- Family & Matrimonial Law
- Trusts & Estates
- Probate & Guardianship
- Private Judging
- Civil Litigation
- Probate Litigation
- Appellate Law
- Community Association Law

The Path to Our Future

BY RABBI DAN LEVIN
DLevin@tbebo.ca.org

So here's a question. Would you say the best days for our people, for humanity, are behind us or in front of us?

For centuries, for most of humanity, time moved in cycles. Every day was mostly the same. You would arise, get to work, maintain a home, have a meal, go to bed, repeat.

Every year was mostly the same. In springtime, we would begin to plant. Summer we would cultivate our crops and tend to our animals. Fall would arrive and we would gather in the yield. Winter would come and we would hunker down against the cold and try to make it to spring.

Not much changed from day to day, month to month, year to year, lifetime to lifetime.

That is, until the Author of the Universe taught our people to write a different story.



Our Jewish tradition holds all the wisdom and tools necessary for us to build the world of our dreams, and it is our obligation to empower the next generation to build on the foundation we are obligated to lay for them.



Judaism introduced the world to the idea that time can be linear, not just cyclical. Ours is a story of a journey - a collective voyage across the seas of time that leads us from a broken yesterday, through an imperfect today, to a much better tomorrow.

That is why Judaism insists we not simply focus on how to live our lives today, but how to raise our children so there will be a better future.

In our daily prayers, we recall the words of Deuteronomy when we recite the words of the Sh'ma: "You shall teach [this] diligently to your children."

In our lives, we embrace a mission to partner with God in repairing all that is broken in our world. That task may seem daunting and overwhelming. So the rabbis teach in the Mishnah: "It is not up to you to finish the work, but neither are you free to desist from it."

Thus we raise our children to believe they can be better. They can do better. And there is no greater joy than watching our young people fall in love with their people and their heritage, no greater privilege

than seeing them embrace the mission we so carefully hope to bequeath to them.

Temple Beth El seeks to partner with all of our community in helping to make every tomorrow a little better than yesterday. We look to inspire our young people to understand what true holiness looks like, how to make moral and ethical decisions, how to build a strong spiritual sensibility, and how to stand by the courage of their convictions.



The world our children inherit is complicated and conflicted. It is up to us to help them sink roots strong and secure in a Judaism that is rich and thick and deep. Our Jewish tradition holds all the wisdom and tools necessary for us to build the world of our dreams, and it is our obligation to empower the next generation to build on the foundation we are obligated to lay for them.

Our new Board of Trustees boasts five leaders who themselves grew up at Temple Beth El. Our congregation is proud to have alumni who are studying for the rabbinate and the cantorate and who work in Jewish education and Jewish communal leadership. Our young people participate in national fellowships in which they meet aspiring Jewish leaders from all over the country and our world.

I am so proud of all that our young people are accomplishing. They are learning to advocate for the better world they want to build, and to navigate the complexities of life where the right choice is not always easy to discern. They nurture a growing appreciation for love, understanding, and wisdom. They give hours and hours of their time to support our congregation and community. They share laughter and friendship, weaving together a tapestry of community, and are discovering a passion for Jewish life and learning.

It is because of our youth that I am confident that our best days lie ahead. We will do all we can to pave the path to the future, and then we pray our children will find their way build the future of our dreams.

Resilience is the In-Between



BY **GINA SHUGAR**
TEMPLE BETH EL
PRESIDENT
GShugar@tbebo.ca.org

When Jews talk about resilience, we often tell the same story. We were oppressed, then we survived. We were in exile, then we returned. We were in danger, then we won. (Let's eat!)

Those stories are part of who we are, but they don't tell the whole story. Resilience is not just what happens after the crisis, it's how we live while it's still unfolding.

As I write this article, there is significant unrest in the world. Jews in Israel are living with a level of uncertainty most of us don't want to imagine: many nights of interrupted sleep and a constant awareness that something terrible could happen at any moment. Yet, they move through their days. They wake up, take their children to school, go to work, sit with friends. They even get married in bomb shelters.

Not because they feel safe or fearless, but because in Jewish life, we don't wait for perfect conditions to live.

We live anyway. That is resilience.

Resilience isn't about being happy, and it isn't about being fearless. It's not about pretending everything is okay. It's the decision to keep going when everything is not okay. It's the ability to hold two truths at once: I am afraid, and I am living my life anyway. I am exhausted, and I will show up.

It's also the discipline not to judge yourself for that tension. If something painful is happening

and you find yourself laughing at dinner or enjoying a moment at a party, that's not something to question or feel guilty about. It doesn't mean you don't care. It means you're human. It means you're doing exactly what Jews have always done: carrying sorrow and joy at the same time.

Resilience lives in that space.

I see your resilience here at Beth El all the time: a daughter who traveled to Israel while her mother was dying; the man who cares for his ailing partner every day of the week, while keeping his head high; a daughter who navigated the loss of her dad, and still showed up to shul on a Friday night – and there are so many more. I see that quiet strength. It doesn't call attention to itself. It's not loud or dramatic, just palpable and real.

Thankfully, we are not living under sirens, but many of us are still living with our own forms of uncertainty, stress, and fear. Resilience, for us, looks like continuing to engage even when we feel overwhelmed, allowing ourselves to feel what we feel without letting it stop us, taking the next step without having all the answers, and staying connected to people, to purpose and to each other.

Resilience is not about eliminating discomfort. It's about building the capacity to move forward with it. Maybe that has always been the deeper Jewish story: not just that we survived, but that we kept living, fully and imperfectly, all the way through.

Membership & Engagement

A YEAR OF WELCOMING AND CONNECTION

Under the leadership of Vice President Susie Siegel, the Membership & Engagement Committee celebrated a successful year of building connections across our Temple community.

From thoughtful outreach like welcome calls and challah cover deliveries to friendly faces greeting members and guests each Friday night, the committee helped ensure that everyone felt seen and included. Our ambassadors extended that warmth beyond Shabbat, creating a welcoming presence at programs and events throughout the year.

Highlights included a lively evening for empty nesters, featuring dinner at Yard House in Mizner Park followed by a Steely Dan tribute concert—bringing community together in a fun and meaningful way.

The year concluded with a celebratory gathering, with exciting plans ahead—including the launch of a new Volunteer Program.

The Membership & Engagement Committee is open to all. To get involved, please contact Susie Siegel at susiesiegel@gmail.com or Elinor Josephson at EJosephson@tbebo.ca.org.



We are very excited to welcome Todd Herzog as the new Cantorial Associate and Craig Sumberg as the new Director of Development.

Welcome Todd Herzog

CANTORIAL ASSOCIATE

Todd comes to Temple Beth El after serving for 18 years as a Cantorial Associate at Temple Solel in Paradise Valley, Arizona where music was central to worship, learning, and congregational life across generations.

He is an accomplished composer and performer who has appeared nationally and internationally, sharing Jewish music in synagogues, conferences, schools, and cultural settings around the world. His original compositions have been featured in television and film, and are known throughout the Reform movement.

In Arizona, Todd founded and curates the Desert Gathering Jewish Music Fest, an annual celebration bringing together diverse Jewish artists and communities for learning, inspiration, and joyful communal song.

Education and teaching are central parts of Todd's professional life. He has taught at the New Community Jewish High School, served as an instructor



at "Songleader Boot Camp," and been an Artist-in-Residence with the JCC Maccabi ArtsFest, working with students and adults to explore the intersection of music, spirituality, and Jewish text.

Todd studied in a dual-degree program at Tufts University and the New England

Conservatory of Music, earning degrees in Philosophy and Jazz Vocal Performance. In recent years, he has studied at the Academy for Jewish Religion in pursuit of rabbinical ordination.

We are thrilled to welcome Todd, his wife Kerry and their son Eliot to our temple family. Todd will begin his service to Temple Beth El on July 1 and would like to share this message with our community:

"I am honored to join the Temple Beth El community and look forward to creating meaningful, participatory prayer experiences and deepening connections through music, learning, and shared Jewish life."

To get in touch with Todd, email him at THerzog@tbeboca.org.



Scan to listen to music from Todd

Welcome Craig Sumberg

DIRECTOR OF DEVELOPMENT

Craig grew up in Newton, Massachusetts—often jokingly referred to as "the Boca Raton of Massachusetts"—where he was the Dual County League golf champion his senior year of high school. He went on to attend the University of Virginia as an undergraduate and earned his law degree from the University of Michigan Law School.

After a brief time practicing law in Boston, Craig began his career in the Jewish communal world, holding roles with several national organizations including The American Jewish Congress, The Jewish Council for Public Affairs, and The National Jewish Coalition for Literacy. He later transitioned into the performing arts, beginning with his role as Executive

Director of Sixth & I Synagogue in Washington, D.C.—a vibrant Jewish arts and culture center.

Over the past 15 years, Craig built a distinguished career at the intersection of Jewish life and the arts. Among his many accomplishments, Craig is especially proud of the decade he spent as Executive Director of the Fox Tucson Theatre, where he combined his passion for building strong institutions with his love of live music.

Craig looks forward to working alongside the talented staff at Temple Beth El and becoming part of the community.

"I am truly looking forward to working with the outstanding staff at Temple Beth El and to meeting



and getting to know this warm and welcoming community." If you would like to meet Craig, contact him at CSumberg@tbeboca.org.

New Membership Year starts July 1, 2026

Thank you for being a member of Temple Beth El. We appreciate you, and look forward to providing many new opportunities in the coming year to learn, connect, participate in acts of *Tikkun Olam* (repairing the world), and grow spiritually.

Your tax-deductible Congregational Commitment payment gives you access to everything Temple Beth El has to offer, and is critical to maintaining a vibrant Reform Jewish community in Boca Raton.

Additionally, you can engage with other members through Beth El Circles (over 30 affinity groups to choose from), Beth El Chavurot (friendship groups), Parenthood, The Giving Tree, Social Justice Circles, Women's and Men's Programming and the many opportunities of Adult Learning. For those of you who are looking to get involved in one of our many leadership roles, consider volunteering in any of the engagement opportunities or one of our open committees.

You will notice a modest increase in Congregational Commitment rates next year necessary to keep pace with inflation. As always, we are committed to keeping our community safe, but we are pleased to let you know we are not raising the mandatory Security Fee next year. It will remain at

\$395 per household, despite the significant increase in security measures for both campuses. We were able to keep the security fee unchanged, in part, due to grants we received from the Jewish Federation of South Palm Beach County and the Florida Department of Education.

You will receive an email in mid-May to renew your membership. As in the past, your membership will automatically renew, including your method and frequency of payment, unless you notify us otherwise. Payments start on July 1, 2026 and your current payment method on file will be used to process the payments. There is no need to send your payment prior to July 1.

Look for your membership renewal email later this month. We hope you will continue to support Temple Beth El so we can continue to enrich lives by generating bonds of love through exceptional Jewish experiences.

For more information about membership and Congregational Commitment, please contact Elinor Josephson, Director of Member Engagement and Programming, at EJosephson@tbeboca.org or 561-314-2833. If you have a billing question, please contact Billing Support at billingsupport@tbeboca.org.

Celebrating New and Returning Members

Welcome New and Returning Members who have joined between December 15, 2025 and March 24, 2026. Additional members not listed at the time of printing will be included in our next list. For help getting involved, please contact Elinor Josephson, Director of Engagement and Programming, at EJosephson@tbeboca.org or 561-314-2833.

Marc & Heather Adelman and their children, Tyler & Hilary	David Dorfman	Mitchell & Lauren Heide	Susan & Stuart Rosenholtz
Richard Akawie	Steven & Lori Doynow	Noreen & David Hochberger	Rita & Eugene Rothkopf
Roger & Shari Baer	Anne & Mark Ellman	Helen Hovis	Mark & Donna Schissler
Sue Bernstein	Danielle & Cory Epstein and their children, Bryce & Ayden	Alisa & Steve Kohn	Marc Schwartz & Dalia Yadegar and their children, Ethan, Zachary & Tyler
Ilya Beynenson, Emily Beynenson and their children, Jacob & Hannah	David & Jodi Epstein	J.C. Lingelbach & Amy Berger Lingelbach	Suzi Selinger and her children, Alexis & Jordan
Alice & Alan Borenstein	Eileen Ertag	Jayne & Eric Littman	Barbara & Gary Shapira
Robert & Kylie Caro and their child, Louie	Robert & Susan Fishman	Bruce Maged	Susan & Joel Shatles
Alex Cohen & Ana Galvan and their child, Allie	John & Susan Flynn	Gerald & Frances Marshall	Barbara & Sam Skora
Brett Cohen & Alexandra Riggio	Ollie Frieze	Alyse & Jay Miller	Heidi Stander
Amy & Howard Cohen	Donna Gaines	Joanne Miller	Dan & Lisa Stern and their children, Eric & Nathan
Sarah & Trace Cohen and their children, Shai & Maya	Carol & David Gart	Mark Miller	Robin Tartarkin
Christina & Steven Cometz and their child, Sophie	Alex Glassman & Ariella Bresky-Glassman and their child, Jax	Todd & Lauren Morgan and their child, Olivia	Stephen Trachtenberg
Caryn & Barry Danoff and their children, Klaire, Lauren & Brandon	Marina & Mark Gleyzerman	Melissa & Lorin Munchick and their child, Aria	Janet & Timothy Trapani
Samuel Davis	Bonnie Gold and her children, Jaxson & Chase	Gwen & Robert Newman	Lisa Turesky
Mark Davison	Ellen & Marc Goldberg	Adiel Nissanian & Hannah Morris	Ariella & Aaron Weisberg
	Alan & Nancy Goldenhar	Larry Port	Corina & Glenn Ziegler and their children, Ellie & Leorah
	Stanley & Judie Grubman	Michael & Rachel Poretz	
	Myra Hackel	Marla Ramirez	

COME TOGETHER TO CELEBRATE TEMPLE BETH EL!
ANNUAL MEETING AND DINNER

Bonds of Love

Join us as we gather to celebrate another meaningful year at Temple Beth El and honor the dedicated volunteers and professionals who help our community flourish.

Guided by the spirit of Bonds of Love, this special evening reflects the deep connections that unite us—through shared traditions, acts of service, and a commitment to one another. The table has always been a place where these bonds are nurtured, friendships are strengthened, and lasting memories are made. Together, we will reflect on the past year, recognize those who help shape our vibrant community, and look

ahead to an exciting future by approving next year's Board of Trustees and the Temple budget.

Enjoy a warm, classic dinner inspired by traditional favorites, beginning with freshly sliced challah, a hearty salad bar, and comforting matzo ball soup. The evening continues with a variety of delicious entrées and sides, followed by a dessert station featuring beloved deli-style treats like rugelach, babka, black-and-white cookies, and more.

Reconnect with friends, celebrate our community, and spend a memorable evening around the table.

THURSDAY

MAY 28 | 2026

SCHAEFER FAMILY CAMPUS

6:00 PM

Dinner (optional)

6:30 PM

Annual Meeting

Dinner Prices:

Adults: \$42

Children ages 5-13: \$20

Children under 5: Free

Prices increase by \$5 after Thursday, May 21, 2026

Registration for dinner closes at 12:00 pm on Monday, May 25.

Agenda for the Annual Meeting includes:

- Confirm the slate for the 2026-2027 Board of Trustees
- Present the 2026-2027 Operating Budget
- Present the Joseph Q. Kline Lifetime Achievement in Volunteerism Award to Debbie Averbook
- Present the John Rogers Award for Exemplary Professional Service to Brigitte Livingstone
- Present the Robin L. Eisenberg Learning and Living Award to Brittany Pancotti from our Early Learning Center and Howard Rudnick from our Religious School

To register for dinner and/or the Annual Meeting, please visit tbeboca.org/annual-meeting.

The 2026 Honorees

2026 JOSEPH Q. KLINE LIFETIME ACHIEVEMENT IN VOLUNTEERISM AWARD

Debbie Averbook

Debbie is a native Chicagoan who moved to Miami in 1976 with her husband, Chas. In 1981, they relocated to Boca Raton with their 18-month-old daughter, Amy. The Averbooks were welcomed by Robin Eisenberg into Temple Beth El's preschool program, marking the beginning of a 45+ year love affair with Temple Beth El. All three of their children—Amy, Jennie, and Michael—were named, became B'nai Mitzvah, and were confirmed at Temple Beth El. Debbie "followed suit," becoming an adult Bat Mitzvah and Confirmand too.

Debbie worked as a social worker with senior adults at the Jewish Community Centers of Chicago, Miami Beach, and Ruth and Norman Rales Jewish Family Services. She also served as Assistant Director of the Women's Division at the Miami Jewish Federation, a Case Manager for Disabled Adults for the Florida Area Agency on Aging, and a Patient Advocate at Boca Raton Regional Hospital, where she was instrumental in creating its Shabbat Room.

Debbie volunteered for many years with the National Council of Jewish Women in Boca Raton. She also held leadership roles at Calusa Elementary School, Omni Middle School, and Spanish River High School.

Debbie served for many years on the Temple Beth El Board of Trustees and, at times, as Secretary of the Executive Committee. She was the Communications Leader for Beth El Sisterhood many years ago. In addition to participating on numerous committees, Debbie served as Vice President of Religious Activities and Social Action. She currently serves as Co-Chair of the Bikkur Cholim Committee, where she calls and assists those who are sick or in need. She goes out of her way to bring them food and other necessities, doing whatever she can to help provide medical needs such as wheelchairs, walkers, or medication.

Her warmth, kindness, and thoughtfulness, combined with her deep love for and support of the Temple Beth El family, make her a perfect fit for this award.



2026 JOHN ROGERS STAFF AWARD FOR EXEMPLARY PROFESSIONAL SERVICE

Brigitte Livingstone

Brigitte Livingstone joined the Beth El staff in 2017 as an Administrative Assistant in the Early Learning Center. Brigitte enjoyed being part of the ELC team for a year before transitioning into the Religious School department, where she continues to be an instrumental part of the success of the school.

Brigitte has been essential in helping the Religious School continue to grow and improve by implementing and maintaining online registration (we were still using paper enrollment forms eight years ago!) and managing the school's information across multiple platforms. She has streamlined purchasing and is key to our budgeting success. Her smiling face is the first thing our students and families see when walking into school, and she is always ready to problem solve when any glitch comes her way.

Brigitte's skill and dedication have helped our Religious School grow and run more smoothly than ever.



We are fortunate and thankful that Brigitte is part of the Temple Beth El team and are grateful for her years of dedication. Mazal Tov to Brigitte on this well-deserved award.

**2026 BETH EL EARLY LEARNING CENTER WINNER OF THE ROBIN L. EISENBERG
JEWISH LEARNING AND LIVING EDUCATOR OF THE YEAR AWARD**

Brittany Pancotti

Brittany Pancotti is proud to be the Lead Teacher of the Playful Penguins I (Toddlers) classroom at the Beth El Early Learning Center. With over fifteen years of experience in early childhood education, including more than seven years at Temple Beth El, she has dedicated her career to nurturing the growth and development of young children during their most important years.

She holds a Bachelor's degree in Early Care and Education from Florida Atlantic University and was privileged to receive the Academic Achievement Award for Early Childhood Excellence from Palm Beach State College.

Brittany is deeply passionate about creating a classroom environment where children feel safe, valued, and inspired to learn. She strives to foster language development, independence, social-emotional growth, and creativity through meaningful, hands-on learning experiences through a play-based curriculum approach. Brittany also believes strongly in building trusting relationships with families, as collaboration is essential to each child's success.

Brittany believes that one of the most rewarding aspects

of her work is witnessing those "light bulb" moments - when a child makes a connection, gains confidence, and carries new skills into their everyday interactions.

Those moments continually inspire her commitment to teaching and lifelong learning.

Outside of the classroom, Brittany enjoys spending time with her family and friends and cherishes every moment with her son, Shiloh. She loves exploring local parks, children's museums, visiting farmers markets, and taking advantage of all the fun activities South Florida and Orlando have to offer.



**2026 RELIGIOUS SCHOOL WINNER OF THE ROBIN L. EISENBERG
JEWISH LEARNING AND LIVING EDUCATOR OF THE YEAR AWARD**

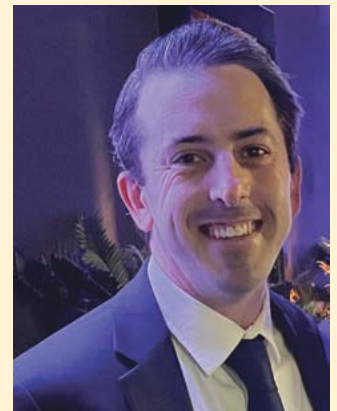
Howard Rudnick

Howard Rudnick has spent the majority of his life immersed in Jewish spaces—from religious school and sleepaway camp to Hillel, and most recently serving on the Health & Wellness team at Camp Coleman last summer. He has chaperoned teen summer trips to Israel and, for the past eight years, has been an educator at Temple Beth El Religious School.

In his day-to-day life, Howard is a School Counselor at Boca Raton Community Middle School, where he works closely with students to support their mental, emotional, and academic well-being. Through this work, he has recognized the profound impact of showing up for adolescents in meaningful ways—

understanding that every child needs at least one consistent, supportive adult in their life.

Howard's skillset and dedication have elevated our middle school experience, both in the classroom and through youth group programming, where he is a frequent and valued chaperone. He is honored to have been chosen by his peers as this year's Robin L. Eisenberg Jewish Learning and Living Educator of the Year for the Religious School.



SECURITY UPDATE



BY **STEVE KAUFMAN**
EXECUTIVE DIRECTOR
SKaufman@tbebo.ca.org

A synagogue is a sanctuary – a safe and sacred space where we are free to learn and grow, build friendships and community, and nurture both our individual and collective spiritual growth.

As antisemitism in the United States and across the globe continues to make headlines, we recognize that security is a growing concern. With that in mind, we want to take a moment to share some information about Temple Beth El's security measures.

Security is an extremely high priority at Temple Beth El. Industry best practices emphasize keeping plans, procedures and protocols confidential so that people looking to do harm cannot compromise our buildings. For this reason, much of our security strategy is intentionally not public information.

At the same time, it's important that you feel confident in our commitment to keep our community safe. With that in mind, here are a few things you might not know about security at Temple Beth El.

- **For the past four years, the Temple has had a dedicated in-house Security Manager, Michael Ropp.** Mike served in the U.S. Marine Corps for 21 years in various leadership roles, including Drill Instructor and Infantry Unit Leader. Following his military service, he spent 15 years in private security protecting high profile clients. Mike oversees security at both campuses, including supervising our team of armed officers from our third party security company.
- **The Temple maintains a mass notification system at both campuses.** This system allows staff to initiate an emergency notification from their cell phones, which is then broadcast campus-wide, both indoors and outdoors.
- **Nearly every square foot of both campuses, indoors and outdoors, is covered by our surveillance camera system**—which is actively monitored on both campuses during operating hours.
- **All Temple staff are trained and regularly retrained, in life safety and active threat protocol multiple times each year.** Training includes CPR and AED use, situational awareness, active threat response, and stop-the-bleed training. Staff at both campuses also receive training and participate in lock down drills and active threat response drills at various times during the year.
- **We are continually enhancing our security infrastructure.** Most recently, we installed new fencing and anti-climb wall spikes at the Beck Family Campus, and a new access control badge system for staff at both campuses.
- **We frequently receive briefings from local and federal law enforcement, as well as the Secure Community Network (SCN),** the official safety and security organization of the Jewish community in North America. SCN has a local Community Security Director who is an integral part of our Temple Beth El Community.
- **According to SCN, there are currently no known, credible threats facing the local Jewish community in Boca Raton.** Should that change, we are immediately notified. In the face of the current environment and world events, it is critical that we remain vigilant – without allowing fear to take hold. One of the aims of our adversaries is to instill fear and discourage Jewish life. We must not be complacent, but neither should we live in fear. Instead, we must summon the courage necessary to continue living proud and vibrant Jewish lives.

LEADERSHIP DEVELOPMENT ACADEMY: Celebrating the Class of 2026

This past February, the Leadership Development Academy Class of 2026 successfully completed an intensive four-week program centered on deepening their knowledge of Temple Beth El and connecting with fellow congregants. Under the leadership of Dina Schwartz (Vice President of Leadership Development & Governance) and Co-Chair Lauren Koblick, the cohort met every Wednesday evening to explore the temple's core pillars.

The comprehensive curriculum guided participants through our rich history, values, organizational structure, and unique culture. Beyond the complexities of governance and financial responsibility, the class gained a clearer understanding of diverse leadership roles and the many "Pathways to Leadership" available within our community. The program's core message remained clear: true leadership begins with active engagement. We are incredibly proud of these emerging leaders and their dedication to service and the growth of our congregation.



To learn more about "Pathways to Leadership" contact Elinor Josephson, Director of Engagement & Programming, at EJosephson@tbebo.ca.org



BUILDING A LEGACY
FOR THE NEXT GENERATION

The Moldow Family Confirmation Program

Next year, Temple Beth El will proudly rename its Confirmation Program the Moldow Family Confirmation Program in honor of Bruce Moldow and his family, recognizing their generous gift to the BE The Future Endowment Campaign. For Bruce, this meaningful investment ensures that future generations of teens will experience the same sense of connection, identity, and belonging that shaped his own family's Jewish journey.

In this reflection, Bruce shares why supporting the Confirmation program—and securing its future—felt like the most natural and important gift he could make.

My connection to Judaism didn't truly come alive inside a synagogue. It happened in high school, when I joined MAFTY (the Mid-Atlantic Federation of Temple Youth), which is part of NFTY (the North American Federation for Temple Youth). As a Regional Vice President of MAFTY, I was immersed in a world of community, deep friendships, and music that moved me. I had celebrated bar mitzvah and confirmation, but it wasn't until MAFTY that I genuinely felt Jewish. That connection lit something in me that I carried for years, and quietly searched for as an adult.

When I found Temple Beth El 20 years ago, I recognized that feeling immediately. The first time I attended the High Holy Day children's service at FAU— Rabbi Dan and Cantor Lori in costumes, the room alive with joy—I felt at home. Temple Beth El gave me back what I had been missing: real community, meaningful friendships, music with soul, and services that combine celebration



with spiritual purpose. Experiences like the 2020 Civil Rights Journey with Rabbi Greg deepened my sense of what Judaism means beyond the walls of any building. And when I introduced my partner Andrea to the Temple, the congregation welcomed her with open arms—the kind of warmth that tells you a community is genuinely good.

Both of my children grew up here. They went through religious school, B'nai mitzvah, and confirmation. That last milestone wasn't always easy.

Continued on next page



Continued from previous page

Balancing confirmation with the pressures of private school and participating in competitive sports was a real challenge—but it mattered deeply to my kids, to their mother, and to me. Rabbi Dan's openness and understanding made it possible.

What happened next is what I'm most proud of. My daughter Eliza has always embraced her Jewish identity with enthusiasm. She marched in the March of the Living in high school alongside my uncle, who was a survivor, and attended Birthright Israel at Vanderbilt University. My son Jordan, like many students, was still finding his way when he headed off to Duke University for college, but the foundation Temple Beth El helped us build carried him. He spent a summer in Israel through TAMID* and became active in Jewish life on campus. The roots held.

Together with their mother and the community at Temple Beth El, I believe we've given Jordan and Eliza a Jewish foundation that will offer them comfort, identity, and connection for the rest of their lives. Supporting the confirmation program through the BE The Future Endowment Campaign is our way of helping ensure that other families can give their children that same gift—for generations to come.

Create Your Legacy

If you would like to leave a lasting legacy at Temple Beth El and help secure a vibrant Jewish future for future generations, please consider making a gift to the BE The Future Endowment Campaign. To learn more, contact Craig Sumberg, Director of Development, at CSumberg@tbeoca.org or 561-391-8900.

*TAMID Group is a nonprofit that seeks to forge a strong connection to Israel for the next generation of business leaders.



If Temple Beth El is a
Meaningful Part of Your **Life...**

...Let it Be a **Meaningful**
Part of Your **Legacy**



Thank you for your participation,
your generosity, and your commitment
to Temple Beth El.

If you would like to participate
in Temple Beth El's BE The Future Endowment
Campaign or have any questions, please
contact Craig Sumberg, Director of
Development, at CSumberg@tbeboca.org.



GROWING UP Jewish

BY RABBI ASHIRA BOXMAN

At a recent religious school t'filah (prayer) service, I asked our students in 3rd through 5th grade what they were praying for, hoping for, or wishing for. Hands shot up immediately. I began calling on them, expecting to hear the usual: good grades, a big win at a weekend soccer game, maybe even a new puppy. And those answers came. But then one student quietly said, "I'm praying for the war with Iran to be over."

That is what our children are praying for. That is the world they are growing up in.

To grow up Jewish today is to live in two realities at once. It is a life filled with school, sports, playdates, homework, and laughter, but also shaped by an awareness—sometimes far

too early—of war, antisemitism, and the vulnerability of our people. Our children move seamlessly between these worlds. One moment they are at recess, the next they are asking questions about Israel, about safety, about what it means to be Jewish right now. As one of our teens shared, "I feel scared... but here in Boca, I feel safe. I feel like I have a great community of other Jews who help support each other."

As their Jewish community,

it is our responsibility to meet them in that complexity.

Part of our role is to create space for their questions, fears, and curiosities. But just as importantly, we must offer them something steady to hold onto: the depth, beauty, and grounding of Jewish life. Judaism does not shield them from the world as it is. Instead, it equips them to move through that world with resilience, meaning, and pride.

Each week in t'filah, I try to center that sense of pride. We explore prayers like the *Amidah*, calling upon our ancestors—Abraham, Isaac, Jacob,





Sarah, Rebecca, Rachel, and Leah—and I invite our students to reflect on their own Jewish lineage and what it means to carry that story forward.

We sing. We tell stories. We travel to Israel through virtual tours. We pray. And slowly, something takes root. Jewish identity begins to feel less like something they learn about and more like something they live. As one student put it, “It’s fun to sing the prayers.” Another shared that being Jewish means “a lot of fun things to learn,” from holidays to traditions that become part of everyday life.

I see that same magic with our youngest learners each Friday morning at Tot Shabbat. There is unfiltered joy as we sing, dance, light candles, sip grape juice, and share challah. Children take turns as Shabbat *Ima* and *Aba*, and we celebrate each other as Mitzvah *Mensch*es. One child explained it simply: “I smiled... I make other people happy.”

And of course, Yarok, our beloved Shabbat dinosaur, makes his weekly appearance, much to everyone’s delight.

These moments may seem small, but they are anything but. They are the building blocks of Jewish memory and identity—where Judaism is not just taught, but felt.

That foundation becomes even more critical as our students grow, especially at the milestone of Confirmation. At a time when the world can feel uncertain—and at times unwelcoming—choosing to continue Jewish learning



and become a confirmand is a powerful statement. It is a declaration of identity, belonging, and commitment. It says: this is who I am, and this matters.

Beyond just continuing their education, our Confirmation students are stepping into ownership of their Jewish lives. They are asking deeper questions, forming personal connections to tradition, and strengthening their

voices as Jewish young adults. As one 10th grader shared, her desire to continue came from “the Jewish community and all my friends... that made me want to continue into my Judaism.”

Each week, I have the privilege of moving between these ages and stages, from our youngest students to our high school seniors. I see how aware they are, how much they are already holding—and how much they want to feel grounded, connected, and proud.

Parents feel it too. One shared that even in moments of fear, “we should love to be Jewish... never hide from being Jewish,” emphasizing the importance of raising children with pride and connection.

Another parent, whose family came to this country from Russia where practicing Judaism was not always possible, carries a deep sense of what it means to hold onto Jewish identity. Now raising



her own family—including a husband who is not Jewish—she describes that choice clearly: raising Jewish children is “a non-negotiable,” and in today’s world, “it’s incredibly important to maintain that identity.”

Growing up Jewish today asks a lot of our children. Our task is to make sure they know they do not have to carry it alone—and that what they inherit is not only the weight of the world, but also the strength, joy, and wisdom to navigate it.



Shabbat



Friday Night Services will be in the Chapel from July 3 – August 7

FRIDAY, MAY 1

Volunteer Recognition Tot Shabbat

6:00 pm

Beck Family Campus

Join us for the final Tot Shabbat of the school year! Enjoy pizza dinner, a fun Tot Shabbat service with our clergy, and a special thank-you to our amazing ELC volunteers. Stay after for an Oneg with sweet ice cream treats!

Oneg to be sponsored by Mighty Manatees (124) & Proud Pandas (125).

Registration is required. RSVP at tbeboca.org/tot-shabbat.

Shabbat Celebrating High School Seniors

6:00 pm

Schaefer Family Campus

We will celebrate and learn from our graduating high school seniors and offer them a special blessing.



SATURDAY, MAY 2

Shabbat Morning Minyan

10:45 am

Schaefer Family Campus

Join our clergy for a monthly Shabbat morning experience that combines the ancient words of our sages with the timeless power of music. This enlightening experience will bring spiritual nourishment through song, prayer, and the study of Torah.

FRIDAY, MAY 8

May Birthday Blessings

7:30 pm

Schaefer Family Campus

We will honor everyone born in the month of May with a special blessing on the bima.

Shabbat Evening Service Honoring Cantor Lori Brock

Friday, May 15
7:30 pm
Schaefer Family Campus



Join us to honor Cantor Lori Brock as she transitions to Cantor Emerita and celebrate with a special Oneg.

FRIDAY, MAY 22

Shavuot Morning Festival Service with Yizkor

10:30 am

Schaefer Family Campus

Join us on Shavuot morning for a meaningful festival service celebrating the giving of Torah, followed by Yizkor, a sacred moment of remembrance as we honor the memory of our loved ones.

Shabbat Service

7:30 pm

Schaefer Family Campus

FRIDAY, MAY 29

Shabbat Service

7:30 pm

Schaefer Family Campus



FRIDAY, JUNE 5

Shabbat at Six

6:00 pm

Schaefer Family Campus

Join us for a warm and uplifting Shabbat service at 6:00 pm filled with music, meaning, and community.



SATURDAY, JUNE 6

Shabbat Morning Minyan

10:45 am

Schaefer Family Campus

Join our clergy for a monthly Shabbat morning experience that combines the ancient words of our sages with the timeless power of music. This enlightening experience will bring spiritual nourishment through song, prayer, and the study of Torah.

FRIDAY, JUNE 12

Spish Splash Tot Shabbat

6:00 pm

Beck Family Campus

Bring your swimsuits for a super exciting and wet Tot Shabbat! Join us for a pizza dinner at 6:00 pm, followed by a family Shabbat service in the Kehillah Center. Then, it's time to head out to the Big Backyard for super splish splash fun on the splash pad and bounce house water slides!

Join the fun and don't forget to bring your towels!

Registration is required. Register at tbeboca.org/tot-shabbat.

June Birthday Blessings

7:30 pm

Schaefer Family Campus

We will honor everyone born in the month of June with a special blessing on the bima.

FRIDAY, JUNE 19

Pride Shabbat

7:30 pm

Schaefer Family Campus

This evening, wear rainbow colors to honor the movement for LGBTQ+ equality and inclusion and join us for a festive service with the members of Beth El Pride.



FRIDAY, JUNE 26

Shabbat Service

7:30 pm

Schaefer Family Campus

FRIDAY, JULY 3

Shabbat at Six – Independence Day

6:00 pm

Schaefer Family Campus

Join us for a warm and uplifting one-hour Shabbat service at 6:00 pm, filled with music, meaning, and community.



SATURDAY, JULY 4

Shabbat Morning Minyan

10:45 am

Schaefer Family Campus

Join our clergy for a monthly Shabbat morning experience that combines the ancient words of our sages with the timeless power of music. This enlightening experience will bring spiritual nourishment through song, prayer, and the study of Torah.

FRIDAY, JULY 17

July Birthday Blessings

7:30 pm

Schaefer Family Campus

We will honor everyone born in the month of July with a special blessing on the bima.

FRIDAY, JULY 24

Shabbat Service

7:30 pm

Schaefer Family Campus

FRIDAY, JULY 31

Shabbat Service

7:30 pm

Schaefer Family Campus

Shabbat Evening Service
Welcoming Todd Herzog

Friday, July 10

7:30 pm

Schaefer Family Campus

Welcome our new cantorial soloist, Todd Herzog, for his very first service with our community—come celebrate this exciting new beginning together.





A Special Encounter with Tobi Kahn's Omer Counter

On view from May 1 –22 at the Schaefer Family Campus, Temple Beth El presents *The Omer Counter* by Tobi Kahn, a celebrated contemporary artist whose work explores spirituality and ritual, on loan from the Boca Raton Museum of Art. The beautiful piece will first be introduced during Shabbat services on May 1.

The work invites reflection on the spiritual practice of counting the Omer as a journey of intention and ascent toward Sinai. Counting the Omer is the sacred Jewish practice of marking each of the 49 days between Passover and Shavuot, transforming time into a journey of reflection and intentionality. The Omer Counter will be displayed in the synagogue accompanied by interpretive materials offering visitors a contemplative encounter with a work that has been exhibited in leading institutions, including in The Jewish Museum in New York.

We invite you to visit our Schaefer Family Campus during this time to reflect and count the steps of your Omer journey.

HOLY GROUNDS

A Shavuot Coffeehouse Experience

Thursday, May 21 | 7:30 pm
Schaefer Family Campus
Register at tbeboca.org/shavuot
Light bites will be served

Join us for a Shavuot evening of personal revelation and meaningful connection, as we celebrate the giving of Torah in a Temple Beth El cozy coffeehouse, Holy Grounds.

Through storytelling, music, and connection we'll explore the "Torah of our lives," the lessons, moments, and people that have shaped who we are. Clergy will help guide the evening with brief teachings, while members of our community share personal stories grounded in meaning and reflection.

Enjoy a warm café-style atmosphere with a made-to-order coffee bar, light bites of dairy and other tasty treats, and a relaxed, welcoming vibe. Whether you come to listen, reflect, or simply be together, this promises to be a unique and uplifting Shavuot experience.

SHAVUOT MORNING SERVICE WITH YIZKOR

Friday, May 22
10:30 am
Schaefer Family Campus & Virtual Beth El



2026/5787
High Holy Day
information including
the Service Schedule,
Tickets and Tribute
information
will be available online
after July 15 at

tbeboca.org/high-holy-days-2026

Tisha B'Av Service

Tuesday, July 22 | 7:00 pm
Schaefer Family Campus
& Virtual Beth El

Join us as we come together in community to observe Tisha B'Av. This powerful evening invites us into reflection, remembrance, and connection as we mark one of the most sacred and somber days in the Jewish calendar.

Lunch & LEARN

Young Zionist Voices

A New Generation Speaks Out with Rabbi Ashira Boxman

Tuesdays, May 5, 12, 19 & 26

12:00 pm

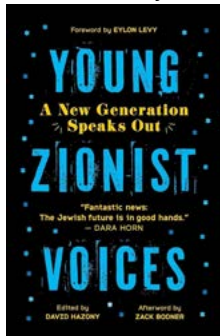
Schaefer Family Campus & Virtual Beth El (Zoom)

Join Rabbi Ashira Boxman for a Lunch & Learn series exploring a collection of essays, *Young Zionist Voices: A New Generation Speaks Out*, edited by David Hazony. Together, we'll read and discuss essays by next-generation thought leaders engaging deeply with Zionism, Israel, Jewish identity, and what it means to hold



love, responsibility, and complexity at the same time.

Rabbi Ashira is also a contributing essayist in the book and will share personal reflections from her own essay, along with insights into how these conversations continue to shape Jewish life and leadership today.



Parsha Perspectives

Every Friday at 11:00 am
Schaefer Family Campus

Join Rabbi Laila Haas to explore the weekly Torah portion. We will uncover timeless wisdom and contemporary relevance in our sacred texts. The discussions will blend traditional commentary with modern



insights, creating space for questions, discoveries, and meaningful conversations.

A Taste of Judaism®



3-sessions: Wednesdays,
May 20, 27 and June 3
7:00 – 8:30 pm

Schaefer Family Campus and
Virtual Beth El (Zoom)

Free, but registration required at
tbeboca.org/taste-of-judaism

Led by Temple Beth El rabbis, A Taste of Judaism®, is a 3-session program all about showing people what is delicious about Judaism: our faith, our customs and our community. This course is a good introduction designed for Interfaith couples and extended families, unaffiliated Jews, individuals exploring conversion, and anyone curious to know more about Judaism. Please spread the word to friends and family members who may be interested!

A Taste of Judaism® is designed for beginners from any religious background, no previous knowledge of Judaism is required.

For more information, contact Aileen Spilka at ASpilka@tbeboca.org.

Jewish Folk Tales and Timeless Wisdom

Tuesdays, June 2, 9, 16, 23, 30
12:00 pm

Schaefer Family Campus &
Virtual Beth El (Zoom)

Together we will explore Jewish folk stories and discover how these beloved tales continue to shape Jewish thought and tradition.

Each session will be led by a different member of our clergy, who will teach their favorite Jewish folk tale, unpack its meaning, humor, and enduring lessons for our lives today. From playful parables to profound reflections, these stories offer insight into Jewish values, resilience, and imagination.





ELC Dates

MAY		
1	Volunteer Tot Shabbat – Pizza Dinner	6:00 pm
1	Volunteer Tot Shabbat – Service	6:30 pm
4-8	Staff Appreciation Week	
13	Parenthood Meeting	9:30 am
14	PreK Graduation Rehearsal	
17	PreK Graduation	
20	Graduation Day	
21	Last Day for Early Childhood Students	
25	Memorial Day – No School	
29	Summer Adventure Camp Visiting Day	
JUNE		
1	Summer Adventure Camp Session 1 Begins	
12	Splish Splash Tot Shabbat – Pizza Dinner	6:00 pm
12	Splish Splash Tot Shabbat – Service	6:30 pm
22	Summer Adventure Camp Session 2 Begins	
JULY		
13	Summer Adventure Camp Session 3 Begins	
31	Last Day of Summer Adventure Camp and Childcare	





B'nai Mitzvah

Annie Kreger
Daughter of Jennie & Larry Kreger
May 2, 2026 at 6:00 pm

David Alterman
Son of Olga and Igor Alterman
May 9, 2026 at 9:00 am

Vivian Thaw
Daughter of Jennifer Thaw
and Benjamin Thaw
May 9, 2026 at 11:30 am

Ella Krasner
Daughter of Taryn and Andrew Krasner
May 9, 2026 at 5:30 pm

Sonya Grushin
Daughter of Olga and Andrey Grushin
May 23, 2026 at 9:00 am

Sammie Korn
Daughter of Lisa and Dan Korn
May 23, 2026 at 11:30 am

Ian Korn
Son of Lisa and Dan Korn
May 23, 2026 at 11:30 am

Aiden Treiser
Son of Dana and Brian Treiser
May 23, 2026 at 6:00 pm

Reese Spodak
Daughter of Lori & Brett Spodak
May 30, 2026 at 11:30 am

Ethan Glick
Son of Scott & Andra Glick
May 30, 2026 at 6:00 pm

Hayden Frey
Daughter of Mara and Seth Frey
June 6, 2026 at 6:00 pm



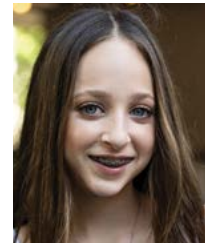
Annie Kreger



David Alterman



Vivian Thaw



Ella Krasner



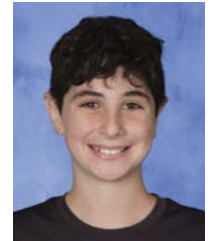
Sonya Grushin



Sammie Korn



Ian Korn



Aiden Treiser



Reese Spodak



Ethan Glick



Hayden Frey

5786 CONFIRMANDS

- | | |
|---------------------|-------------------|
| Noah Benson | Samantha Levinson |
| Taylor Butler | Davynn Martinoff |
| Micha Grossman | Aidan Nieves |
| Lily Hilton | Idan Pinhasi |
| Emily Kerper | Pierce Seguin |
| Joshua Lamberk | Simone Sperber |
| Ava Leslie | Liora Tenenboim |
| Hallie Lichtenstein | |



CONGRATULATIONS
TO OUR
Graduating Seniors
CLASS OF 2026

**SHABBAT
EVENING SERVICES**
FRIDAY, MAY 1
600 PM

**Teen
Programming
May, June,
July**

SUMMER KICKOFF DISNEY DAY TRIP

*Spend the day at The Magic Kingdom
with friends*

- Middle and High School Students
- Sunday, May 31, 2026
- \$130

Register at tbeoca.org/teens

FOLLOW BETH_EL_TEENS ON INSTAGRAM FOR EVENT INFO & UPDATES:

- Summer meet ups
 - Giving Tree School Pencil Case Drive
 - World Cup Fantasy Soccer League
- And much more!



THANK YOU TO OUR *Beth El Bash Sponsors*

The Beth El Bash was a tremendous success, raising significant support for the newly established Cantor Lori Brock Music Endowment Fund. This fund will create a lasting legacy honoring Cantor Lori's love of music and the arts, ensuring a perpetual source of income to sustain and enrich the Temple's musical life for generations to come.

HONORARY CHAIRS

Patty Beck & Martin Rubenstein
George Brock
Freyda Burns
Rita Judson
Bonnie & Jamie Schaefer
Marla Schaefer & Steve Weishoff
Diane & Richard Templer
Jill Viner

MAESTRO

Patty Beck & Martin Rubenstein
George Brock
Diane & Richard Templer

CONCERT MASTER

Freyda Burns
Emily & Richard Cohen
Maddi & Wes Finch
Rita Judson
Bonnie & Jamie Schaefer
Marla Schaefer & Steven Weishoff
Jill Viner

CONDUCTOR

Jonathan Grayer & Dawn Miller

INSTRUMENTALIST

McCleskey Construction Company
JoAnn & Philip Procacci
Sam & Simone Spiegel Family Foundation
Marilyn & Jay Weinberg

ENSEMBLE

Ilyne Mendelson & Steve Terk
Janet Serle & Ira Malin
Barbara Silver & Steven Willner
Wendy & Steven Walin
Marilynn & Paul Yentis

DUET

Alpha Security
Sheila Asher
Marlene & Richard Bluestein
Dorothy Bucksbaum
Robbie Caplan
Caren & Barry Cohen
Senior Cantorial Associate
Michelle & Yaniv Cohen
Nancy & Dennis Gilbert
Rabbi Laila Haas & Will Evans
Meredith & Marc Hirsh
Ivy & Steve Kaufman
Ellen Koppelman & Mel Lazar
Jan & Allen Lev
Aimee & Rabbi Dan Levin
Marsh & McLennan Agency, LLC
PJ Techtronics
Susan & Barry Podolsky
REO Workforce
Myrna & Norman Ricken
Lisajane & Kevin Romer
Maya Roseberg
Sue & Jim Schiller
Sandy & Tadd Schwab
Sunstates Security
Total Cleaning
Tami & Rabbi Greg Weisman



**BETH EL
BASH 2026**



TAPESTRIES OF LIFE CHOIR CONCERT

A CELEBRATION OF LOVE, LAUGHTER AND SPIRIT

Sunday, May 3
3:00 pm
Schaefer Family Campus
Register at
tbeboca.org/choir

Join us for a beautiful afternoon of music performed by the phenomenal Temple Beth El music ensembles. Enjoy beloved selections from some of your favorite Broadway shows, along with inspiring folk and pop classics. This multi-generational concert promises to be a memorable and meaningful afternoon you won't want to miss.

This concert is generously underwritten by Margie and Maurice Plough Jr.



Nefesh Social

**A GROUP
FOR JEWISH 20S & 30S**
Boca Backgammon
Thursday, June 11

Join us for a fun and social evening of backgammon, connection, and community with Nefesh. Whether you're a seasoned player or just in it for the vibe, all are welcome.

Follow us at
tbeboca.org/nefesh-social
or on Instagram [@NefeshSocial](https://www.instagram.com/NefeshSocial) for more details and upcoming events.



Men's Spiritual Journey to Bourbon Country

LED BY RABBI GREG WEISMAN

Trip Dates: November 12-15, 2026

Informational Meeting: Wednesday, May 13, 2026 | 7:00 pm

Schaefer Family Campus & Zoom

Register at tbeboca.org/bourbon

Join Rabbi Greg Weisman on a men's spiritual journey to Bourbon County, Kentucky. We will be tasting spirits, celebrating Shabbat, and visiting local sites.

BEIT KNESSET | HOUSE OF GATHERING
AROUND BETH EL



Living Our Values

THE IMPACT OF SOCIAL JUSTICE CIRCLES

This past year marked the launch of Social Justice Circles at Temple Beth El—an initiative designed to empower members of the congregation to take meaningful action on issues aligned with the Temple’s Social Justice Core Positions. Rooted in Jewish values and a shared commitment to



community, participants showed up as proud representatives of Temple Beth El, working to make a tangible difference.

Throughout the year, these circles addressed a wide range of critical issues. Volunteers supported legal immigrants in navigating the citizenship process, offering hands-on assistance with paperwork while also advocating for greater fairness within the system.

Members also mobilized in support of reproductive freedom, assembling and donating period kits to help address period poverty and provide essential resources to women and girls in the community.

Education and awareness were another key focus. Participants engaged in important conversations about the evolving nature of antisemitism in the United States and extended that learning to support college students—equipping them with tools to recognize and respond to antisemitic incidents with confidence.

In addition, Social Justice Circle members stayed actively informed on voting issues affecting the community, helping ensure that congregants are prepared and empowered to make their voices heard.

The Temple also maintained a strong and visible presence at local Pride events, reflecting a commitment to inclusion and warmly welcoming individuals of all backgrounds to experience the richness of Jewish life.

The success of the Social Justice

Circles is a testament to the passion and dedication of its leaders and participants. We extend our sincere gratitude to our VP of Social Justice, Kevin Romer, and our Social Justice Circle leaders whose vision, leadership, and commitment have been instrumental in bringing this work to life.

OUR SOCIAL JUSTICE CIRCLE LEADERS

Immigration

Deb Cogan and Debbie Lynott

Protecting Democracy

Ashley Pollowitz, Paul Knapp, Mary Finkelstein

Reproductive Freedom

Jamie Mann and Traci Benedon

LGBTQ+ Rights

Greg Goodman and Kandice Freedman

Antisemitism

Danielle Trepeck



Social Justice on the Move

A NEW HOME FOR GIVING: THE GIVING TREE OF TEMPLE BETH EL EXPANDS ITS IMPACT

After decades of operating out of volunteers' garages and donated storage spaces, The Giving Tree of Temple Beth El has reached a remarkable milestone: a permanent home of its own. The new 2,400-square-foot space marks a transformative moment for one of the community's most enduring and impactful volunteer-driven initiatives.

Inspired by the legacy of Myra Singer, The Giving Tree has been a cornerstone of community support since 1988. What began as a grassroots effort has grown into Temple Beth El's signature social action program—powered entirely by volunteers and dedicated to spreading kindness, dignity, and hope to individuals and families across Broward and Palm Beach Counties.

The organization is perhaps best known for its Holiday Program, which each year mobilizes hundreds of volunteers to fulfill more than 2,000 wish lists and deliver over 10,000 gifts through partnerships with 20 local social service agencies. For many recipients, these gifts represent not just material support, but the reassurance that they are seen and cared for during challenging times.

Beyond the holidays, The Giving Tree's impact continues year-round. Through its Quiet Giving program, volunteers respond to urgent needs identified by social service agencies—providing discreet assistance to low-income families, seniors, and students who may have nowhere else to turn. Meanwhile, the Back-to-School Program equips



approximately 700 children annually with fully stocked backpacks, helping them begin the school year with confidence and a sense of dignity.

The new facility will significantly enhance The Giving Tree's ability to serve the community—offering a centralized space for organizing donations, streamlining operations, and creating a more welcoming and efficient environment for volunteers.

"This space allows us to dream bigger," said Lauren Gross, President of The Giving Tree. "It's not just about storage—it's about building community, increasing our reach, and making it easier for people to get involved."

As The Giving Tree settles into its new home, expanded volunteer opportunities are on the horizon, inviting more members of our synagogue to take part in its mission.

For more information or to get involved, contact Susan Stallone, Director of Social Justice, at SStallone@tbebo.ca.org or Lauren Gross, President of The Giving Tree, at thegivingtreebo.ca@gmail.com



BEIT KNESSET | HOUSE OF GATHERING SISTERHOOD

Sip & Shop

Tuesday, May 5

6:30 pm

Register at tbebo.ca.org/sisterhood

Join us for a special night out in the Sisterhood Gift Shop as we welcome Jacqui and Darren of Jacqui's Pearls. They will showcase their beautiful designs, and share their family's Jewish story and jewelry story. Rabbi Laila Haas will join us and infuse Jewish meaning and wisdom into an evening of socializing and shopping. Wine and light bites will be served. For information, contact Jill Weiner at tbebo.cashgiftshop@gmail.com.

Sisterhood Gift Shop

The Gift Shop offers a full array of Judaica and gifts for any occasion, milestone, taste and generation!

We carry the latest collections, as well as standard favorites, including Nambe, Michael Aram, Annieglass and ANNA New York. Every purchase supports Temple Beth El and is always tax-free.

Open every Friday—30 minutes before Shabbat services and right after services—plus during select Temple events. The Gift Shop is also open by appointment during business hours Monday - Friday by contacting Irene Abrams at 561-314-2834 or IAbrams@tbebo.ca.org



DONATIONS & DEDICATIONS

December 16, 2025 – March 15, 2026

Amy S. Klein Shapiro Memorial Educational Endowment Fund

in memory of:

Amy S. Klein Shapiro by Penny & David Klein

Anna Beitscher Memorial Scholarship Endowment Fund

on the occasion of:

Jim Brachman's birthday by Ruth & Ken Krosin

Annual Giving

Lisa Bernard

Stuart Cohen

Robin Eisenberg & Andy Broido

Elaine Epstein

Jo Fine & Ed Trieber
Sheryl Fromowitz
Rachel Matz Hunter & Robert Hunter
Janice Levites & Alan Glazer
Sue Lichtenstein
Richard Lubell
Lisa & Steve Mendelsohn
Helen & Robert Stark
Monica & Andrew Weinberg
Karen & Howard Weiss
Ileene Yashpeh

in honor of:

Mel Kramer's 80th birthday by Rabbi
Beth Kramer Mazer & family
Sarah Clarke by Anthony Linton
Sheila Asher's 95th birthday by Gail
& Gary Nordheimer

the naming of Aiden & Harrison
Wollstein by Adam Wollstein

in memory of:

Helen Eisenberg by Amy & Todd Eisenberg
Ruth Firth by Jane & Vincent Firth
Larry Gise by Susan Sosin
Blake Sinrod by Lois & Harold Weber

with gratitude:

for the incredible clergy & staff that make Temple
Beth El a home and center of spiritual
fulfillment by Kathy & Devin Grandis

BE The Future Endowment Campaign:

Cantor Lori & George Brock
Daniela Diaz-Padua & Ignacio Diaz
Maddi & Wes Finch
Rabbi Laila Haas & Will Evans

Mazel Tov To:

December 31, 2025 through March 24, 2026

Marilyn Barry on the birth of her granddaughter, Logan Paige Greenstein

Brooke and Zachary Bernstein on the birth of their son, Max Hudson Bernstein, big brother Clark

Jenna Blechman-Blatt and Jake Blatt on the birth of their son, Oren Blatt, big brother Avi

Betsy and David Blechman on the birth of their grandson, Oren Blatt

Farrah Hafeez and Damon Colangelo on the birth of their son, Roman Steele Colangelo, big sister Noor

Debbie and Edward Ellman on the birth of their granddaughter, Frankie Reese Iacobelli

Susan and Stephen Feldman on the birth of their great-grandson, Tuvia Lev Engel

Jessica and Evan Goldberg on the birth of their son, Aidan Goldberg, big sister Halle

Beth and James Gordon on the birth of their daughter, Rebecca Star Gordon, big sister and brother, Abigail and Daniel

Sylvia and Lloyd Granet on the birth of their granddaughter, Isabel Sofia Finkelstein

Arnold Granet on the birth of his great-granddaughter, Isabel Sofia Finkelstein

Katie and Dan Herrera on the birth of their daughter, Andie Olivia Herrera, big brother Charles

Yolanda and Richard Holiber on the birth of their granddaughter, Kaia Isabelle Friggens

Nancy and Michael Kanterman on the birth of their grandson, Rowan Everett Kanterman

Cristina and Donald Keusch on the birth of their granddaughter, Evelyn Juliette Keusch

Lisa and Alan Kirschenbaum on the birth of their granddaughter, Quinn Ivy Kirschenbaum

Stefanie and David Ochs on the birth of their daughter, Bella Grey Ochs, big brother and sister, Ethan and Sophie

Diandra Dreyer and Santiago Ribadeneira on the birth of their son, Oliver Ribadeneira, big brother Julian

Dana and Steven Robbins on the birth of their grandson, Arthur Stanley Robbins

Shari and Craig Schwamm on the birth of their grandsons, Scottie Jacob Schwamm and Karter Lieb Kimmelman

Samantha and Devon Shalmi on the birth of their son, Blake Stuart Shalmi, big sisters Hannah and Skylar

Carly Rosen and Cory Shidlofsky on the birth of their son, Myles Bennett Shidlofsky, big brother Owen

Jessica Nakash Vargas and Gavin Vargas on the birth of their son, Camden Elliott Vargas, big sister Kaia

Viara and Maksim Vladimirskiy on the birth of their son, Jacob Vladimirskiy, big sister and brother Ava and Matthew

Stephanie and Nathaniel Lowen on the engagement of their daughter, Rachel Lowen to Harris Kalvin

Debra and Larry Rosenblum on the engagement of their daughter, Allyson Rosenblum to Jake Schuster

Sharon Segall and Lloyd Berkowitz on their marriage

Cantor Lori and George Brock on the marriage of her daughter, Lizzie Shapiro to Gus Deardoff

Barbara Butan on the marriage of her daughter, Mariel Butan to Aron Yuster

Caren Weinberg and Barry Cohen on their marriage

Lisa and Alan Kirschenbaum on the marriage of their daughter
Audrey Kirschenbaum to Matthew Bleefeld

Margie Larkin and Kenneth Goodman on their marriage

Lori and Steven Lesser on the marriage of their daughter, Samantha Lesser to Michael Wald

Janet Serle and Ira Malin on the marriage of their daughter, Beth Malin to Jason Duncan

Fran and Nathan Nachlas on the marriage of their son, Jake Nachlas to Maria Gomez

Sandra Roth on the marriage of her daughter, Ashley Roth to Artie Dossick

Lisa Runsdorf and Daniel Halem on their marriage



FUNERAL DIRECTORS SINCE 1892

Guttermansinc.com MEMORIAL CHAPEL

*One of The Largest
Family Owned & Operated
Jewish Funeral Homes
Since 1892*

Directors:

PHILIP GUTTERMAN • STEVEN KANOWITZ • KEN LASSMAN

Leading Pre-Arrangement Specialists for all your Medicaid & Estate Planning Needs.
In Home Appointments Available

7240 North Federal Hwy, Boca Raton FL 33487

1-800-992-9262

Serving Miami-Dade, Broward, Palm Beach & Martin Counties

*In Greater New York, Guttermansinc.com: ROCKVILLE CENTRE, L.I. 516-764-9400
WOODBURY, L.I. 516-921-5757 • BROOKLYN 718-284-1500*

MONUMENTS BY GUTTERMAN'S www.guttermansinc.com

Trusted, Comfortable and Caring

Dentistry

- *Highest Quality Dental Care*
- *State of the Art Digital Imaging*
- *Experienced and Caring Staff*

Five Stars ★★★★★ on [Google](#) and [yelp](#)



We are currently accepting new patients so please call us today!

D.A. ROLFE, DDS, PA

333 Camino Gardens Boulevard • Boca Raton Florida 33422
www.DrRolfe.com • Phone: 561.395.4500

Proudly caring for Temple Beth El families for over 20 years!

DOUGLAS A ROLFE, DDS, PA COSMETIC AND FAMILY DENTISTRY



DONATIONS & DEDICATIONS

December 16, 2025 – March 15, 2026

Mindy Jaffe
Bruce Moldow
The Estate of Barbara Rosenzweig
Susan & Jeffrey Rudnick
Anna & Mike Singer
Diane & Richard Templar

in memory of:

Michael Walin by Susan & Joel Ivers
Steve Graham by Ivy & Steve Kaufman

with gratitude:

to Rabbi Greg Weisman & Sr. Cantorial Associate
Michelle Cohen for your guidance and support
in preparing our daughter, Ella, for her Bat
Mitzvah by Shayna & Richard Martinoff

Beth El Bash Contributions

Barbara Diamond
Sandy Emerman
Irene & Merrill Epstein
Teddi Febesh
Leonie Klein
Barbara & Jerry Lewin

in honor of:

Cantor Lori Brock's upcoming retirement
by Frances Weinberg
Caryn & Peter Mintz Religious School
Scholarship Endowment Fund
Caryn & Peter Mintz

Disaster Relief Fund

David Grijalba

Dr. Melvin Homer Endowment Fund

Cindy-Jo & Paul Homer

Early Learning Center Contributions

in honor of:

Isla Levin by Nancy & Joshua Bailin

Gelfand-Arpe Young Children's Innovative Education Endowment Fund

in memory of:

Nancy Goldman by Michael Gelfand
Jan Porter by Michael Gelfand
Susan Lane by Michael Gelfand
James Vickaryous by Michael Gelfand
Alan Greer by Michael Gelfand
Marty Fromowitz by Michael Gelfand
Jack Baskies by Michael Gelfand

General Fund

Best Global Alternative North
Judy Bodner & Mel Turetzky (z"l)
Alice & Alan Borenstein
Gail M. Asarch Private Charitable Foundation
Deb Glick
Caron & Frederick Golder
United Way of Miami Dade

in appreciation of:

the Temple Beth El clergy for making
TBE a deeply meaningful spiritual
home by Amy & Aboud Dweck
Lori Kupferman & the Temple Beth El Knit and
Crochet Circle by Lois & Harold Weber
in celebration of:
the wedding of Caren & Barry
Cohen by Marcia Pelton
the wedding of Caren & Barry Cohen
by Judi & Mel Rubin

in honor of:

Steve Kaufman, for all that you do for us and
the entire Temple Beth El congregation
by Debbie & Chas Averbook
Ivy & Steve Kaufman by Ellen & Howard Bolner
Rabbi Ashira Boxman by Wendy & Herb Brooks
Caren & Barry Cohen by Janine & Douglas Cohen
Charlotte Leigh by Donna Geffner
Cantor Michelle Cohen, for her beautiful
service for my mother Iris Chernosky's
memorial by Lauren & Bradley Johnson
Louis Beck's 80th birthday by Kathie
& Donald Kaplan
the marriage of Caren & Barry
Cohen by Laraine Levy
Sheila Asher's 95th birthday by Jackie & Mitchel May
Rabbi Greg Weisman by Shaun Rimer
Sheila Asher's 95th birthday by Susan Sheftel
Emily & Richard Cohen by Steven Zerkowitz

in memory of:

Rabbi Meyer Abramowitz, Doris Abramowitz,
Rabbi Jeffrey Ballon, Daniel Ballon
by Joni & Joel Abramowitz
Steven Graham by Ellen & Howard Bolner
Jack Baskies by Stephanie & Richard Chestnov
Walter Justus by Andrea & Robert Colton
Estelle S. Teller by Judy Kaye
Sheri Levitus by Ellen & Joel Rosenblatt
Sheri Levitus by Barbara Silver & Steven Willner
Hannah Akawie by Sheila & Larry Trepeck
Fortune Zanco by Pat & Saul Ziv

in support of:

Temple Beth El by Barbara & Leonard Tamchin

Giving Tree

Margaret Eichler
Sheilah Harrow
Susan & Joel Ivers
Peter Lazarus
Rosy Lofar
Sandy & Phillip Roller
Scott Shapiro

in celebration of:

Mallory Epstein's baby naming by Rabbi
Dan Levin by Melissa Epstein
Tracey Labgold's birthday by Aline Fisher
Rachel Lowen & Harris Kalvin's
engagement by Aline Fisher
Barbara Diamond & Russell Leisner's
marriage by Aline Fisher

in honor of:

Patty Beck, for all that you do for Temple
Beth El by Debbie & Chas Averbook
Myra (z"l) Singer & Rabbi Merle Singer
by Elinore & Ben Brown
Jill Melchoir's birthday by Phyllis Brucker
Gillian Fliss' 12th birthday by Phyllis Brucker
Rabbi Merle Singer by Amy Doran
Rabbi Merle Singer's amazing book by Fran
Karp-Eisenberg & Michael Eisenberg
Liora Gonzalez's Bat Mitzvah by Fern & Ivan Ginder
birth of Oren Blatt by Betti Greenstein
the Bat Mitzvah of Rachel Hoffman
by Phyllis & Marc Katz
Chavurah Yachad by Jan & Allen Lev
Howard Weiss' birthday by Marla
Schaefer & Steven Weishoff
Liora Gonzalez's Bat Mitzvah by Ann
& Michael Sherman
Shelley Gold's birthday by Tamara
Stolle & Daniel Schnoll
Ken Lewin by Olga Tomasello & Philip Lewin
Hannah Stirewalt by Elyse Wander & Judy Retchin
the engagement of Aimee & Rabbi Dan Levin's
son, Ari by Lois & Gary Weinstein

in memory of:

Helene Krueger by Phyllis Brucker
Gloria Kline by Phyllis Brucker
Randy Englert by Phyllis Brucker
Arline Neuren by Ramona Cohen
Harvey M. Cohen by Susan Cohen
Morris Cohen by Susan Cohen
Marty Fromowitz by Robin Eisenberg & Andy Broido
Ronald Greenblatt by Irene & Merrill Epstein
Augusta Barnett Unger by Aline Fisher
Ronald Greenblatt by Aline Fisher
Lynne Canter by Aline Fisher
Sheri Levitus by Aline Fisher
Nat N. Nast by Barbara & Paul Knapp
Sheldon Walitt by Rita & Spencer Kreger
Bernard Blutfield by Rita & Spencer Kreger
Miriam Levinson by Barbara & Jerry Lewin
Steven Koolik by Barbara & Jerry Lewin
Leonard Sussman by Joshua McCoy
Jeffrey Selnick by Ilyne Mendelson & Steve Terk
Claudia Plafsky by Beverly Parks
Walter Heakisin by Randi & Daniel Paul-Heskins
Claudia Plafsky by Leanne Robey
Dr. Aaron B. Rosenblatt by Janet & Larry Rosenblatt
Edward M. Tavlin by Beth Tavlin
Myra Singer by Wanda & James M.
Moran Jr. Foundation, Inc.

on the occasion of:

the birth of Oren Beau Blatt by
Irene & Merrill Epstein

Glenn & Laurie Borden Endowment Fund

Laurie & Glenn Borden



AWAY.

Experience a New Concierge Level of Travel

Luxury Travel Design by Jessica Flores with AWAY. Travel

For the discerning traveler, luxury is personal. At AWAY, every journey is artfully designed— *Prestigious Hotels, Insider Access, Exclusive Upgrades, and Unforgettable Experiences* that go beyond the ordinary.

"My team and I are ready to begin designing your next unforgettable journey."



Connect with Jessica:
(877) 493-2929

jessica@travelwithaway.com



Family Owned & Operated



SARASOHN & COMPANY INC.
PUBLIC ADJUSTERS
SINCE 1924

RESIDENTIAL & COMMERCIAL CLAIMS



FIRE DAMAGE



WIND & HURRICANE DAMAGE



WATER DAMAGE



MOLD CLAIMS



BUSINESS INTERRUPTION

**WE WORK FOR YOU,
NOT THE INSURANCE COMPANY.**

CALL: 561-368-5000
WWW.SARASOHN.NET

ONE Sotheby's
INTERNATIONAL REALTY

**Ready for what's next?
Let's have a conversation.**

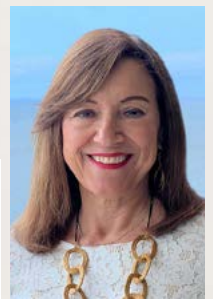


ROSY LOFER
Global Real Estate Advisor

Who you work with matters.

DEERFIELD BEACH, BOCA RATON,
DELRAY BEACH AND BOYTON BEACH.

MEMBER OF TBE FAMILY
ROSYREALTY@GMAIL.COM
786.301.0300



DONATIONS & DEDICATIONS

December 16, 2025 – March 15, 2026

High School in Israel Fund

in memory of:

Peter Sosin by Susan Sosin

Israel Youth Travel Fund

in honor of:

Marilyn Weinberg's birthday by Ilene
& Peter Wohlgemuth

in memory of:

Max Unger by Aline Fisher
Larry Gise by Aline Fisher

Jan & Allen Lev Endowment Fund

in honor of:

the engagement of Rachel Lowen & Harris
Kalvin by Jan & Allen Lev
the engagement of Mary Bach & Ari
Levin by Jan & Allen Lev
Jan & Allen Lev by Lyndsay & Jonathan Lev
Mira Lev by Linda & Walter Silvers

in memory of:

Sheri Levitus by Jan & Allen Lev
Walter G. Justus by Jan & Allen Lev
Peter Sosin by Susan Sosin

Kurt Kimmelman Memorial Endowment Fund

in memory of:

Kurt Kimmelman by Lisa Kimmelman

Linda Snyder Kindergarten & Nursery School Scholarship Fund

Jean O'Toole

in memory of:

Renee Lipton by Meryl Cohen
David Tantleff by Meryl Cohen
Renee Lipton's brother, Michael by Meryl Cohen

Music Fund

in honor of:

the marriage of Cantor Jake & Cantor Rachel
Harris by Marcia Gerson & Scott Glincher

Myra R. Schwartz Cantorial Music Endowment Fund

in celebration of:

the wedding of Nicole Kesner & Christopher
Perlik by Elaine Erenstein
Irving Friedman's 100th birthday by Susan Sosin

in honor of:

Cantor Lori Brock's birthday by Phyllis Brucker
Cantor Lori Brock by Judith Chason
Cantor Lori Brock's upcoming retirement by
Marcia Gerson & Scott Glincher

Rabbi Merle E. Singer Scholarship & Educational Endowment Fund

in memory of:

Brenda Singer by Phyllis Brucker

Rabbis' Discretionary Fund

Spencer Backman
Donald D. Rogers Foundation, Inc.
Wilma & Jim Kaufman
Terri & Russell Meyers
Peter Quintero
Robin Traiger

for the Mi Sheberach of:

Nolene Dale, mother of Tara Shinn
by Spencer Backman

in appreciation of:

Rabbi Dan Levin, Rabbi Greg Weisman,
Rabbi Laila Haas, and Rabbi Ashira
Boxman by Spencer Backman
Rabbi Greg Weisman for being a part of Oren's
bris by Betsy & David Blechman
Rabbi Dan Levin for beautifully officiating our
wedding by Audrey & Matthew Bleefeld
Rabbi Greg Weisman for officiating at the
wedding of Barbara Diamond & Russel
Leisner by Barbara Diamond
Rabbi Greg Weisman for officiating at the unveiling
of George Goldman by Arlene Goldman
Rabbi Greg Weisman for officiating at
the wedding of Barbara Diamond &
Russel Leisner by Russell Leisner
Mel Kramer by Beth Singer
Rabbi Greg Weisman for your support, caring &
love during my time of loss by Ilene Yashpeh

in celebration of:

the engagement of Ari Levin & Mary Bach
by Debbie & Chas Averbook
Sheila Asher by Todd Berman
Nate Lerner's bris by Celine Geck & Andrew Lerner
Sheila Asher's 95th birthday by Andra & Scott Glick
the Aufruf of Lucy Hotz & Jake Stein by Larry Hotz
Rabbi Greg Weisman's 13 years of dedication &
service to Temple Beth El by Rosy Lofer
the births of Shari & Craig Schwamm's grandsons,
Scottie and Karter by Jill & Paul Weiner
Sheila Asher's 95th birthday by Jill & Paul Weiner

in honor of:

Beth Nemeroff by Lori Beyer
Rabbi Greg Weisman's 13 years of dedication
and service to Temple Beth El by
Betsy & David Blechman
Rabbi Laila Haas' birthday by Phyllis Brucker
the engagement of Ari Levin & Mary Bach
by Robin Eisenberg & Andy Broido
the engagement of Ari Levin & Mary Bach
by Mary & Jesse Finkelstein
Rabbi Greg Weisman's 13 years of dedication
and service to Temple Beth El & Jewish
community of Boca Raton by Allen Gendler

Rabbi Greg Weisman's 13 years of dedication
& service to Temple Beth El by
Marcia Gerson & Scott Glincher
Rabbi Greg Weisman & Cantor Michelle
Cohen for guiding our daughter, Liora,
as she became a Bat Mitzvah by Stefanie
Goldberg & George Gonzalez, Jr.
Sadie Mitnick by Julie Greenblatt
Alexa Hilton's Bat Mitzvah by Diane & Jeff Hilton
the upcoming wedding of Evan Hoppenstein &
Monica Hruzd by Diane & Saul Hoppenstein
Rabbi Laila Haas for the baby naming of Noémie
Lisette Joseph by Jodie & Neal Joseph
Marion Katz by Alvin Katz
Lenny Sloan's birthday by Michele & Gary Kronfeld
Rabbi Greg Weisman for the Brotherhood
Golf Outing by Gail & Keith Kronish
Rabbi Ashira Boxman by Rosy Lofer
Ian & Sammi Morton's wedding by Cindy
Katz Morton & Duncan Morton
Craig Applebaum's engagement by
Andrea & Mark Platt
Ashley Remis' Bat Mitzvah by Allison
& Michael Remis
Rabbi Greg Weisman by Jackie & Louis Robinson
Jeffrey Wynn's 80th birthday by
Stephanie & Steven Schuster
Rabbi Greg Weisman's 13 years of
dedication & service to Temple Beth
El by Lois & Geoff Solomon
Dylan Brooke Mayer's Bat Mitzvah
by Stanley Strauss
Claire Weisman's Bat Mitzvah by Susie & Mark Tabor
Claire Weisman's Bat Mitzvah by
Robin & Gary Warren
Sheila Asher, a truly remarkable and
inspiring woman by Arlyne Wilcox

in memory of:

Steven Graham by Anonymous
Larry Gise by Debbie & Chas Averbook
Julie Bowen by Debbie & Chas Averbook
Joshua Shapiro by Linda & Harvey Brandt
Julie Bowen by Judith Chason
Julie Bowen by Caren & Barry Cohen
Marty Fromowitz by Nancy Cohen
Julie Bowen by Emily & Richard Cohen
Dr. Marc Cooper by Cheryl Cooper
Fred Axelband & Sharon Kotin by Cheryl Cooper
Dr. Marc Cooper, Raymond Cooper, Fred
Axelband & Anne Cooper by Marissa
Cooper & Shawn Warmstein
Julie Bowen by Amy Dweck
Gussie Block by Elaine Erenstein
Steven Graham by Aline Fisher
Julie Bowen by Aline Fisher
Lorraine Herzberg by Marcia Gerson
& Scott Glincher
Lynne S. Canter by Sylvia & Lloyd Granet
Julie Bowen by Larry Hotz
Jan Howard Kaplan by Karen Kaplan
Steven Graham by Helen Kapner
Julie Bowen by Michael Kator
Julie Bowen by Jan & Allen Lev
Bernard Levin by Shirley Levin

Roslyn Feinstein by Rosy Lofer
 Julie Bowen by Rosy Lofer
 Irma & Arthur Marcus by Shelley & Larry Marcus
 Julie Bowen by Pam Nadler & Mark Sickles
 Julie Bowen by Karen & Mark Panoff
 Ken Mraz by Andrea & Mark Platt
 Scott Joel Reit by Eric Reit
 Mathew Romer by Lisajane & Kevin Romer
 Carl Meyers by Lisajane & Kevin Romer
 Marion Hod by Ellie Roth
 Steven Graham by Sherry Saunders
 Betty Rother by Marla Schaefer & Steven Weishoff
 Regene Schmier & Steven Neuman by
 Linda & Bobby Schmier
 Clara Sherman by Rita Schuster
 Wally Justus by Stephanie & Steven Schuster
 Steven Graham by Sharon & Richard Sierra
 Jack Baskies by Barbara Slafsky
 Larry Gise by Susan Sosin
 Joseph David Weingard, with gratitude to Rabbi
 Laila Haas by Josh & Jessica Strikowski
 Sheri Levitus by Janet & Allan Sussberg
 Julie Bowen by Janet & Allan Sussberg
 Betty Taub by Rasheena & David Taub
 Betty Taub by Ronna & Marc Taub
 Julie Bowen by Ronna & Marc Taub
 Julie Bowen by Temple Beth El Board of Trustees
 Walter G. Justus by Robin & Gary Warren
 Larry Gise by Lois & Harold Weber
 Harvey Wayne by Lisa & Neil Weiss
 Gerald Zensky by David Zensky

in support of:
 my relatives in Israel by Spencer Backman
 Kehilat YOZMA in Modi'in by Emily
 & Richard Cohen
 Kehilat YOZMA in Modi'in by Margie
 & Maurice Plough
 Kehilat YOZMA in Modi'in by Sandy & Tadd Schwab

to thank:
 Rabbi Dan Levin ahead of our wedding
 by Sharon & Lloyd Berkowitz
 Rabbi Greg Weisman for attending
 and blessing Oren's bris by Jenna
 Blechman-Blatt & Jacob Blatt
 the clergy for their love & support over
 the years by Jaime Engelman
 Rabbi Laila Haas for welcoming us to the temple
 family by Nancy & Michael Kanterman
 Rabbi Laila Haas for officiating the unveiling for my
 parents on 12/28/25 by Bonnie & Brad Kirsch
 Rabbi Dan Levin for your compassionate presence
 during some of the most difficult days of
 our lives by Judie Lifton & Ron Bobman
 Rabbi Dan Levin for officiating the wedding of Gabi
 & Danny Werber by Serena & Richard Werber

with gratitude:
 to Rabbi Greg Weisman for your nurturing, patient
 & dedicated guidance in our grandson,
 Marco Zummo-Hurley's Bar Mitzvah
 instruction by Maureen & Alec Blotnick
 to Rabbi Dan Levin by Karen & Scott Bransdorf

to Rabbi Greg Weisman & Cantor Michelle Cohen
 for making the Bar Mitzvah of our son,
 Andrew Fischer, such a warm, intimate, and
 meaningful experience by Kim & Jared Fischer
 to Rabbi Greg Weisman for officiating the
 unveiling of my beloved husband,
 Paul Merzer by Rosalyn Merzer
 to Rabbi Dan Levin for your guidance &
 wisdom by Cindy Rosenthal
 to Rabbi Dan Levin for officiating the wedding
 of our daughter, Beth Malin to Jason
 Duncan by Janet Serle & Ira Malin
 for the ritual of affixing my mezuzah
 at my home by Leah Spero

Religious School Scholarship Fund

in memory of:
 Robert Rubin by Barbara & Robert Eisenberg

Samuel & Mollie Luks Endowment for Special Needs Education

in memory of:
 Jan Kaplan by Frances Weinberg

Sisterhood Contributions

Penny & David Klein

in honor of:
 the engagement of Allyson Rosenblum &
 Jake Schuster by Jan & Allen Lev
 the marriage of Amy & Eliot Appel's
 son by Jan & Allen Lev
 the birth of Scottie Jacob Schwamm
 by Jan & Allen Lev

with gratitude:
 to Temple Beth El Sisterhood for their kindness
 during our time of mourning by Wendy Bruck

Steve Brown Endowment Fund

in honor of:
 Rabbi Greg Weisman's 13 years of dedication
 & service to Temple Beth El by
 Pam Nadler & Mark Sickles

in memory of:
 Steve Brown by Lois & Geoff Solomon

Tzedakah Fund

Rachel & Joshua Baron
 Heather & Joshua Beale
 Rhonda Bernstein
 Bruce Brodsky
 Sheila & Bob Chestnov
 Emily & Richard Cohen
 Tracy & Jared Comess
 Lori Dahan & Jeff Korentur
 Rita & Richard Diamond
 Tia & Grant Disick
 Jan Fine
 Susan & Eric Fogelgaren

Lisa & Jonathan Franklin
 Jacky & Stephen Friedman
 Sheryl Fromowitz
 Ruth & Harry Goldberg
 Andrea & William Gralnick
 Amy & Richard Greenblatt
 Laurie & Jonathan Greene
 Beverly Hacker
 Vera & Martin Hirschhorn
 Cindy-Jo & Paul Homer
 Rachel Matz Hunter & Robert Hunter
 Susan & Joel Ivers
 Grace & Jack Jaiven
 Barbara & Russel Johnston
 Pamela Kaplan Comiter
 Linda Koshy & David Solow
 Jennifer & Alex Kulik
 Johanna & Byron Lassin
 Rosy Lofer
 Lisa & Ben Lusskin
 Joe McCrea
 Marnie & Brian Melzer
 Elizabeth Miller
 Carmel & Louis Nayman
 Stephen Nechtow
 Carolyn & Edward Pomeranz
 Valeria Ponce de Leon & Robert Tuckman
 Alan Radov
 Jill & Greg Rispler
 Nancy Robinson
 Harriet Rosenthal
 Lee & Isidore Rotter
 Cheryl & Adam Runsdorf
 Marla Schaefer & Steven Weishoff
 Robyn & Neil Schiller
 Sandy & Tadd Schwab
 Leslie Schwam
 Lauren & Adam Schwartz
 Janet Serle & Ira Malin
 Crystal Romero-Sherman & Brett Sherman
 Tara Shinn
 Caron Shutan & Jay Yospe
 Kristina Stein
 Julie & John Sudenfield
 Janet & Allan Sussberg
 Olga Tomasello & Philip Lewin
 Danielle & Hayden Trepeck
 Kristen Vargas
 Lois & Harold Weber
 Jill & Paul Weiner
 Meredith & Carmel Winkler
 Orna & Larry Wiseman
 Linda & Eric Workman

in honor of:
 Rabbi Greg Weisman's 13 years of
 dedication & service to Temple Beth
 El by Debbie & Chas Averbook

in memory of:
 Julie Bowen by Marcia Gerson & Scott Glincher

DONATIONS & DEDICATIONS

December 16, 2025 – March 15, 2026

Yahrzeit Fund

in memory of:

Pierre Abejean & Bernice Ellis by Jannette Abejean & Irving Friedman
Jeannette Abend by Marilyn Abend
Luke Heller by Leslie Abrams & Manuel Abondano
Lawrence Adelman by Julie Adelman
Karen (Kiki) Kelrick by Priscilla & Len Adler
Max Adler by Priscilla & Len Adler
Gloria Appel by Amy & Eliot Appel
Anna Matz by Barbara Arnold
Joseph Aronson by Marian Aronson
Janet Maxine Asher-Flood by Sheila Asher
Sara Grossman by Gary & Shelly Auslander
Andrew Todd Auster by Carolina & Darren Auster
Irwin Auster by Carolina & Darren Auster
Selma Axelrod by Stephen Axelrod
Anne Rabinowitz Bakerman by Bruce Bakerman
Rabbi Jeffrey I. Ballon & Rabbi Meyer Abramowitz by Ann Lois Ballon
Marlene Rosenbaum by Lori & David Bargas
Dr. Milton Rosenbaum by The Bargas family
Bruce Baron by Rachel & Joshua Baron
Sylvia & Gerald Baron by Mitchell Baron
Daniel Barry by Marilyn & Stanley (z'l) Barry
Bethann Baskies by Nancy & Jeff Baskies
Esther Benenson by Susan & Michael Benenson
Samuel Berenson by Felice Berenson
Dennis Berg by Marjorie Berg
Marilyn Bergner by Annie & Michael Bergner
Alfred Nyder by Stan Berkovitz & family
Hilda Berkowitz by Mark Berkowitz
Rhea Chain Shindell by Sony & Bob Berman
Julian (Dick) Bernstein by Dorothy Bernstein
Martha Bernstein, Samuel Bernstein & Sidney Stein by Dorothy Bernstein
Joy Pollack by Shelli & Gary Bettman
Luke Heller by Amanda Black
David Joseph Viggiano, Jr. & Adam Michael Viggiano by Judy Blackman
Martha Maier by Judy Blackman
Herman Fink by Barbara Blakeslee
Spencer Blakeslee by Barbara Blakeslee
Luke Heller by Susan & Joel Bloom
Arthur Borden by Laurie & Glenn Borden
Lila Borden by Laurie & Glenn Borden
Edwin Polokoff by Linda & Philip Brandon
Matthew Breen by Stacey & Todd Breen
Dr. Richard Brietstein by Barbara Brietstein
Harold Radelinsky, Howard Moss & Jerry Fromsky by Suzy & Brian Broad
Ron Nelson by Bruce Brodsky
Mary Catherine Ficara by George Brown
Walter Brunswick by Murray Brown
Alvin Calick by Sandy Calick
David & Esther Wasserman by Sandi & Gary Ceska
Eugene Fomon by Judith Chason
Ronald Simon by Judith Chason
Robert Chavis by Jan & Rick Chavis
Hannah Chestnov by Sheila & Bob Chestnov
Sigmund Atterman by Sheila & Bob Chestnov
Carolyn Cohen by Helaine Cohen
M. Roy Cohen by Laurie Cohen & Rick McArdle

Bruce Cohen by Laurie Cohen & Rick McArdle
Eileen Cohen by Alice & Ron Cohen
Leonard Coleman by Brian Coleman
Selma Mitrani by Myrna & Lenny Comerchero
Nat Copulsky by Maxine & Joseph Copulsky
Luke Heller by Amy Coran
Beverly Bronfman by Richard & Alene Court
Phyllis Rosen by Lori Dahan & Jeff Korentur
Samuel Noguee by Edythe Davis
Ted Davis by Edythe Davis
Theresa Klein & Henrietta Nudelman by Ruth & Ralph Delman
Dr. Nathan S. Deutsch by Roberta & Natalie Deutsch
Gertrude Deutsch by Shirley & Warren Deutsch
Sam Deutsch by Shirley & Warren Deutsch
Stanley Schaffer by Tia & Grant Disick
Ellis Disick by Tia & Grant Disick
Ellis Disick by Tia & Grant Disick
Paul Donoff by Lindsey Donoff & David Silverman
Alter Friedman by Amy Doran
Pearl Dorfman by Barry Dorfman
Seymour Frank by Amy Dweck
Julie Bowen by Dana Egert
Eli S. Egert by Dana Egert
Miriam Karp, Sidney Karp, Arnold Eisenberg & Eileen Eisenberg by Fran Karp-Eisenberg & Michael Eisenberg
Colonel Paul R. Dolin by Lisa & Chuck Eiss
Steven Graham by Lisa & Chuck Eiss
Luke Heller by Kim & Erick Ellsweig
Phyllis Elman by Eddie Elman
Lisa Enfield, Paul Enfield, Frances Enfield & Isaac Cohen by Carol & Ted Enfield
Lena Rosenbaum by Elaine Epstein
Charlotte Brown by Susan & John Feinberg
Oliver Feldman by Diane & Joseph Feldman
Alice Fiebiger Widrow & Paul Fiebiger by Sue & Steve Feldman
Stephen Feller by Karen Feller
Dr. Kenneth Wayne Fields by Connie Fields & Fred Steinberg
Frank Fink by Phyllis Fink
Irma Banks Stanfield Vickroy by Mary & Jesse Finkelstein
Corinne (Corky) Fiorillo by Andy Fiorillo
Joyce Diskin by Burton Firtel
Luke Heller by Nancy & Lee Frank
Luke Heller by Jennifer & Samuel Frank
Sol Hornreich by Paula Franklin
Gertrude Freeman by Kathy Freeman-Costin
Bernard Hauser by Hollis & Jeffrey Freemark
Shirley White & Sam Fried by Sandi & Ed Fried
William Gottlieb by Adele Friedland
Rose Gottlieb by Adele Friedland
Jacob Shufro by Leslie & Bernard Friedman
Benjamin Garfinkle by Rani Garfinkle
Sandy Garfinkle & Claire Garfinkle by Rani Garfinkle
Rita Abrams by Carol & David Gart
Stephen Mark Teller by Allen Gendler
Dr. Benjamin Gendler by Allen Gendler
Robert E. Gesoff by Jean & Mark Gesoff
Luke Heller by Edda & Gary Gilberg
Sadie Ginsberg by Myrna & Mike Ginsberg
Richard Comras by Myrna & Mike Ginsberg

Ruth Greenberg by Cindy Gitlitz
Ronald Glanzman & Adam Goldberg by Amy Glanzman
Robert Gleeman by Lee Gleeman
Roslyn Goldberg Brezin by Susan & Mark Goldberg
Evah Goldmann by Judi & Richard Goldmann
Eleanor Goodman by Susan & Richard Goldstein
Larry Gise by Susan & Richard Goldstein
Larry Gise by Susan & Richard Goldstein
Prof. Murray L. Weidenbaum by Susan & Richard Goldstein
Gerald (Jerry) O'Connor by Amy & Michael Goodman
Luanne Hirschman-Gotterer by Marilyn & David Gotterer
Hillary Gottlieb by David Gottlieb
Julius Gould by Lew Gould
Pearl Granet by Arnold Granet
Marvin Ruttenberg by Ilene Greenberg
Luke Heller by Mindee Greenberg
Benjamin Greene by Laurie & Jonathan Greene
Sharon Ruttenberg by Karyn & Stuart Grossman
Donna Grubman by Diana & Jeff Grubman
Norbert Guggenheim by Howard Guggenheim
Joan Kirshner & Robert Scheiman by Susan & Meyer Haberman
Daniel Gadoria Rubin by Bonnie Halperin
Jeane Stessin by Karen & Bob Harmelin
Gladys Carolyn Rothbaum by Suzanne Hayward & Howard Zabner
Susan Falk & Beverly Rosman by Allison & Bill Heller
Luke Heller by Donna & Norman Heller
Jenny Greizerstein-Grey by Sylvie Heyman
Joseph Himelstein by Brigitte & Bruce Himelstein
Jean K. Himelstein by Brigitte & Bruce Himelstein
Michael David Soloman by Carol Himmel
Joseph Hirsch by Bonnie & Herb Hirsch
Isadore Bernhard by Bonnie & Herb Hirsch
Irene Bernhard by Bonnie & Herb Hirsch
Luke Heller by Micki & Steven Hirsch
Esther Garvin by Suzanne Hochberg
Judy Hoffman by Jill Hoffman
Luke Heller by Hopeful Journeys Educational Center
Henrietta Oppenheim Matz by Rachel Matz Hunter & Robert Hunter
Florence Jablon by Shari & Howard Jablon
Robert Jablow by Carol Jablow
Deborah Sheinin by Debi & Herb Jackman
Norma G. Rosenfeld by Debi & Herb Jackman
Morris Tucker by Debi Jackman
Stanley Jaffe by Elaine & Scott Jaffe
David Fishman by Grace & Jack Jaiven
Rose Hummel by Linda Jaro
Harry Jerome & Sharon Robbins by Leslie & Stephen Jerome
Beverly Smutnak by Rita Judson
Erna Judson by Rita Judson
Rozalyn (Ronnie) Harris Kahn by Maida & David Kahn
Eli I. Kahn by Maida & David Kahn
Luke Heller by Wendy & Joe Kahn
Martha & Herbert Kirschner by Bobbi & Jack Kalmanson
Carl Gertz by Denie Kane
Lillian Dworkin & Lena Gertz by Denie Kane



DAVID WILSON, LCSW

LICENSED CLINICAL SOCIAL WORKER
AND PSYCHOTHERAPIST

**“YOU ARE NOT ALONE -
REACH OUT FOR SUPPORT
WITH KINDNESS AND STRENGTH.
THINK BETTER, DO BETTER,
FEEL BETTER, BE BETTER.”**

OFFERING COMPASSIONATE THERAPY FOR SENIORS, ADULTS
AND COUPLES. CARING SUPPORT FOR YOUR WELL-BEING.

SPECIALIZING IN MENTAL HEALTH, ANXIETY, DEPRESSION,
LIFE TRANSITIONS, GRIEF, RELATIONSHIP CHALLENGES,
INCORPORATING JEWISH IDENTITY, AND FAMILY ISSUES.

INTEGRATING EVIDENCE-BASED APPROACHES WITH SENSITIVITY
TO JEWISH VALUES, TRADITIONS AND EXPERIENCES -
FROM A MEMBER OF OUR TEMPLE.

NEW CLIENTS WELCOMED. VIRTUAL SESSIONS AVAILABLE.
SLIDING SCALE FEES CONSIDERED.

718-619-7849

DAVID@STATENISLANDCOUNSELINGPRO.COM



Kinetic Vistas by TBE Member Art Siegel

We design & install museum
quality lighting for your
fine art - and your home.

Kinetic Vistas Inc.
kineticvistas.com
kineticvistas@gmail.com



Proud Member: INTERNATIONAL ASSOCIATION
OF LIGHTING DESIGNERS **IALD**

JFS Ruth & Noeman Rales
Jewish Family Services

**Always here when
You need Us.**

SERVICES AT A GLANCE

- Behavioral Health Services
- Family & Children's Services
- Food & Financial Assistance
- Philanthropy & Volunteerism
- Senior Services

#WeAreFamily

To learn more, please call (561) 852-3333

www.ralesjfs.org | 21300 Ruth & Baron Coleman Boulevard, Boca Raton, FL 33428

Morgan Stanley

The Harbor Financial Group at Morgan Stanley

“Service designed to help affluent investors protect
and simplify complex wealth with orchestrated
financial care”



Eric Applewhite, CFP®, CPM® Managing Director—Wealth Management,
Financial Advisor, Senior Portfolio Management Director;
Howard Guggenheim, Senior Vice President, Wealth Management,
Financial Advisor, Senior Portfolio Management Director;
Daniel J. Guggenheim, CFP® Senior Vice President, Financial Advisor;
Jeffrey Guggenheim, Financial Advisor

595 S. Federal Highway, Suite 400
Boca Raton, FL 33432
+1 (561) 393-2035

fa.morganstanley.com/harborfinancialgroup/

L-R: Jeffrey, Howard, Daniel and Eric
CFP Board owns the mark CFP® in the U.S.
Morgan Stanley Smith Barney LLC. Member SIPC.
CRC 4685893 07/25

DONATIONS & DEDICATIONS

December 16, 2025 – March 15, 2026

Adele Kanter by Fern Kanter & Scott Gershaw
Rose Titelman by Tom Kaplan
Andrew L. Kasen by Sandy & Stewart Kasen
Mary Kaufman by Karen Kaufman
Luke Heller by Betsy Kessler
Allan Smith by Bonnie & Brad Kirsch
Joan P. Kirshner by Orin Kirshner
Ronni Knapp by Barbara & Paul Knapp
Clara Sherman by Selma Koppelman
Carl Koppelman by Selma Koppelman & family
David Sherman by Selma Koppelman
Stuart Krackow by Dorene Krackow
Barry Fuller by Amy & Jimmy Kuntz
Elaine & Hugo Kuntz by Amy & Jimmy Kuntz
Luke Heller by Judy & Richard Lappin
Luke Heller by Alice & Charles Leidner
Jesse Buck by Helen Levin
David Klavons by Barbara & Jerry Lewin
Henry Lewin by Barbara & Jerry Lewin
Harry Lichtenstein by Sue Lichtenstein
Rosalyne Lieb by Patti Lieb
Irving Morris by Judith Lipsky
Leon Lofer by Rosy Lofer
Luke Heller by Carol & Martin Loria
Celia Grossman by Zelda Luxenberg
Carol Magod by Ira Magod
Florence Goldstein & Edwin Manning
by Barbara Manning
Earl McCoy by Joshua McCoy
Harry Bleiberg by Lisa & Steve Mendelsohn
Hilda Novick by Barbara & Harvey Morris
Max Morris by Barbara & Harvey Morris
Joseph Morrone by Maureen & Nicholas Morrone
Luke Heller by Katheryn Mullaney
Linda Nagler by Robert Nagler & Jeffrey Nagler
Allan Nappen by Madeline Nappen
Leon A. Kammerman by Cary Nation
Audrey Neimark by Fredda & Richard Neimark
Mickey Nusbaum by Sheri Nusbaum
Harold Savage by Sheri Nusbaum
Eber Levine by Ellen O'Connell
Harry Poritz by Esther Poritz-Oknowsky
& Neal Oknowsky
Lawrence (Larry) Wexler by Esther Poritz-
Oknowsky & Neal Oknowsky
Dora Oppenheim by Jennifer & David Oppenheim
Frances Levinson by Randi & Daniel Paul-Heskins
Sara Heskins by Randi & Daniel Paul-Heskins
Shira Lazar by Randi & Daniel Paul-Heskins
Len Pedvis & Jan Pacht by Carole
Pedvis & Natalie Sudit
Saul Pedvis by Carole Pedvis
Rita Steinberg by Carole Pedvis
Dorothy Katz by Natalie Pelavin
Michael A. Pelavin by Natalie Pelavin
Pearl Perlman & Carin Marchfeld by Helen Perlman
Mary A. Perper & Harold E. Perper by Irwin Pescov
Marcia Jacobson by Harriet Pioquinto
Julie Bowen by Andrea & Mark Platt
Luke Heller by Steven Pollenz
Rachel Pollock Wurman by Ellen & Ed Pollock
Herman Pollock by Ellen & Ed Pollock
Charlotte Ponce by Alan Ponce
Luke Heller by Patti & Peter Poras
Vera Bruner by Roberta Presser & Alex Bruner

Arnold L. Putterman by Laurie & David Putterman
Eli Aginsky by Laurie & David Putterman
Ruth Eisenberg by Laurie & David Putterman
Loretta Allen by Barbara Rachells & Barbara Gianat
Luke Heller by Sari Rapkin
Dr. Morton Lewis Singer, Judith Singer &
Irving Lapidus by Raymond James
Charitable Endowment Fund
Samuel & Miriam Resnick by Henry Resnick
David Jaffe by Mindy Jaffe-Rogers
Emil Acks by Dina Rosenblatt
Allen Rosenthal by Cindy Rosenthal
Idah Robins by The Rosenwater family
Idah Robins & Michael Nash by Judy Rosenwater
Luke Heller by Karen Rostoff
Luke Heller by Karen Rostoff
Ben Roth by Ellie Roth
Danny Roth by Ellie Roth
Bernie Rovin, Rose Ravinsky, M. Robert Levine,
DDS & Paula Levine by Barbara Rovin
Joseph Rubenstein by Myra Rubenstein
Noreen Rubin by Risa & Ron Rubin
Helene Brown by Diane & Ira Rubtchinsky
Luke Heller by Ruth & Robert Salter
Josh Pumphrey by Brett Schneider
Steven David Schulman by Miki Schulman
Luke Heller by Tessa Scripps
Harvey S. Selenow by Kari Selenow
Frances Friedman & Edith Shafer by Roberta Shafer
Eugene Shafter by Bonnie Shafter
Joshua M. Shapiro by Marilyn & Fred Shapiro
Gerald Jaffe by Jill & Doug Sherman
Luke Heller by Helaine & Stevan Silva
Marie Sherman by Laurie Silvers &
Mitchell Rubenstein
Luke Heller by Rachel Silverstein
Evelyn Cousins by Beth & Lenny Sloan
Daniel Smith by Jill Robbe Smith & Brian Smith
Sidney Smith by Kay & Ted Smith
Hyman M. Sontz & Audrey G. Bear
by Risa & Joey Sontz
Dr. Richard Lipman by Mimi & Bob Spitz
Marcia Brown by Laurie Sprinzen
Marcy Pitts & Silvia Pitts by Jay Starr & Robby Levy
Max Kaplan by Beverly Stewart
Ben Grebow by Janet & John Stock
Milton H. Levine by Alice & Samuel Stockhamer
Frances G. Levine by Alice & Samuel Stockhamer
Claude & Elisabeth Gozlan by
Dominique & Steven Strom
Dorothy Sudenfield by Julie & John Sudenfield
Jan Pacht & Len Pedvis by Natalie Sudit

Jan Howard Kaplan by Janet & Allan Sussberg
Jack Wolf by Marla & Jonathan Swartz
Carol Swillinger by Mark Swillinger
Joel Tabnick by Susan Tabnick
Harry Tabor by Susie & Mark Tabor
Douglas Jay Tamarkin by Kay Tamarkin
Sidney Buksbaum by Barbara Tamchin
Harry Thal by Sonny Thal
Sylvia Semel by Sonny Thal
Julie Bowen by Pam Tinkham
Fae Oppenheim by Lynne Vainberg
Luke Heller by Kristina Vetree
Edmond Vichnin & Fanny Woolman
by Marilyn & Herb Vichnin
Dr. Herbert L. Wachtel by Lenore Wachtel
Dr. Bernard Hoffman by Wendy & Steve Walin
S. Stuart (Pat) Cummings by Robin & Gary Warren
Jay Wasserman by Sharon Wasserman
Carol Greifer by Lois & Harold Weber
Isadore Weber by Lois & Harold Weber
Martin Fromowitz by Lois & Harold Weber
Elsie Weidenfeld & Beatrice Goldberg
by Joan & Tom Weidenfeld
Mollie Luks, Samuel Luks, Paul Luks, Mollie
Weinberg, George Weinberg & Julius
Miller by Frances Weinberg
Abraham Epstein by Jill & Paul Weiner
Myer Weingarten by Iris Weingarten
Emma G. Fleeger & Dr. Saul M. Fleegler
by Lois & Gary Weinstein
Sandra Weinstock by Sharon Weinstock
David Weiss by Karen & Howard Weiss
Murray Meisner by Karen & Howard Weiss
Randolph White by Liz White
Dr. Barbara Ann Turkell-White by Pat White,
Jenna Cohen & India Turkell
Luke Heller by Elaine Wiesen
Isidore Goodman, Leonard Goodman & Sara
Rabinowitz by Enid & Robert Winikoff
Abraham Winikoff & Sara Rabinowitz
by Enid & Robert Winikoff
Brenda Wishner by Irving Wishner
Luke Heller by Carolyn Wollman
Edith Gordon & Betty Wulkan by Marilyn Wulkan
David Scharf by Rosa & Salomon Yaker
Jerry Yankow & Leona Edelman by
Linda & Jeff Yankow
Stella Young by Lisa & Kenny Young
Luke Heller by Joanne Zaiger
Linda Zipkin by Daniel Zipkin
Luke Heller by Roseanna & John Zoubek

Advertise in The Chronicle

For more information and pricing, call Irene Abrams at
561-391-8900 or email IAbrams@tbefoca.org
or visit tbefoca.org/chronicle-advertising.

Beth El Mausoleum expansion is *open for sales*,
 with **SPECIAL CONSTRUCTION PRICING** that won't last.
 Call Mausoleum Director, **Mike Sirowitz** at **561-314-2841**
 or email **mike@tbeboca.org** to set up an appointment.



Scan for info

Call now
 before the
July 1st price
 increase!



Cheesecake for Shavuot

FOR THE FILLING

1 pound cottage cheese
 1 pound cream cheese
 1 1/2 cup granulated sugar, divided
 4 eggs, lightly beaten
 1 teaspoon vanilla
 1 1/2 tablespoons lemon juice
 3 tablespoons flour
 3 tablespoons corn starch
 1/4 pound melted butter (1 stick)
 1 pint sour cream
 1/4 teaspoon baking powder

FOR THE CRUST

6 ounces graham cracker crumbs
 1 cup granulated sugar
 1/2 teaspoon kosher salt
 1 teaspoon cinnamon
 1/4 pound butter, melted (plus more for the pan)

SPECIAL EQUIPMENT

9-inch springform pan

PREPARATION

Preheat the oven to 325 degrees.

Combine graham cracker crumbs, sugar, cinnamon, and salt in a medium bowl. Stir in melted butter until the mixture resembles wet sand. Press mixture into the bottom and sides of the pan.

To make the filling, push the cottage cheese and cream cheese through a sieve into a large bowl (see note). Stir in 1 cup of the sugar, eggs, lemon juice and vanilla.


Sift the remaining sugar, flour, and cornstarch into a small bowl, then gradually add into the cheese mixture. Add melted butter, sour cream, and baking powder; mix thoroughly.

Pour the mixture into the prepared crust. Bake for 1 1/2 hours.

Cool in the oven with the door open for 3-4 hours.

Note: You may be tempted to use a food processor for this step, as pushing 2 pounds of cheese through a sieve is a labor of love, but it's worth it, provided you love cheesecake.





SMILES
by Dr. R

Quality Orthodontics
That Will Make You Smile!
Boca Raton • Parkland • Coral Springs
SOFLOTHO.COM / @SMILESBYDR

Call to schedule your
complimentary consult today!
561-483-0072




FEELING ALONE?

Try *The Yoga Psychotherapist Video Course*
A Bottom-Up Approach to Mental Health & Well-Being

Lifetime access | One-time fee of \$99
You deserve affordable tools to feel peaceful.

Created by choir member and chavurah leader
Pamela Tinkham, LCSW, SEP, C-IAYT

 pamelatinkham@gmail.com
(203) 979-7819

Mission Statement

WE WELCOME
Those who are seeking to live and support a modern Jewish life.

OUR PURPOSE
To enrich lives by generating bonds of love through exceptional Jewish experiences.

TEMPLE OFFICERS

- | | |
|-----------------|---|
| Gina Shugar | President |
| Wendy Walin | Immediate Past President |
| Jeffrey Katz | Executive VP |
| Patty Beck | VP at Large |
| Dina Schwartz | VP of Leadership Development and Governance |
| George Gonzalez | VP of Finance |
| Marcy Schultz | VP of Religious Activities |
| Brooke Perez | VP of Education |
| Joel Ivers | VP of Development |
| Susie Siegel | VP of Membership & Engagement |
| Kevin Romer | VP of Social Justice |
| Casey Levin | VP of Early Learning Center |
| Ilyne Mendelson | VP of Mausoleum |
| Brett Schneider | Secretary |

TRUSTEES

- | | | | |
|--------------|-------------|--------------|--------------|
| Ignacio Diaz | Josh Marcus | Bruce Moldow | Marisa Spiro |
|--------------|-------------|--------------|--------------|

LEADERSHIP COUNCIL

- | | | |
|--------------------------|---------------------|--------------------|
| Andrea Halpern Altshuler | Herbert Gimmelstob* | Maurice Plough |
| Rayna Antman | Michael Kieffer | Barry Podolsky* |
| Marc Applebaum* | Lauren Koblick | Debbi Rosenblum |
| Rachel Baron | Jennie Kreger | Craig Rubinstein |
| Patty Beck* | Steven Lazarus | Marla Schaefer |
| Traci Benedon | Allen Lev | Rabbi Merle Singer |
| Dana Brown | Jon Levin | Mark Sunshine* |
| Danielle Butler | Rick Levitt | Hayden Trepeck |
| Robin Eisenberg | Jonathan Mann | Leslie Viselman |
| Melissa Newman Eisenberg | Lottie Nilsen | Wendy Walin* |
| Aline Fisher | Mark Platt* | Monica Weinberg |
| David Friedlander | Margie Plough | Peter Wohlgenuth |

TEMPLE LEADERS OF BLESSED MEMORY

- | | | |
|------------------|-----------------|---------------------|
| James B. Baer* | Ida Herst* | Morris Robinson |
| Donald Berger | Joseph Q. Kline | Stanley Rose |
| Alvin Cohen* | LTC Ben Lake | Albert Schiff* |
| Frances Cohen | Cis Rader | Melvin Schwartz* |
| Stanley Gray* | Irving Rifkin | Bernard H. Shulman* |
| Stanford Hermann | | Alan H. Weiner* |

CLERGY

- Rabbi Daniel Levin
 Rabbi Greg Weisman
 Rabbi Laila Haas
 Rabbi Ashira Boxman
 Rabbi Emeritus Merle Singer, D.P.S., D.H.L., D.D.
 Cantor Lori Brock
 Senior Cantorial Associate Michelle Auslander Cohen
 Music Educator/ Cantorial Soloist Chris Mason
 Cantorial Soloist Todd Herzog

SENIOR PROFESSIONAL STAFF

- Steve Kaufman, EXECUTIVE DIRECTOR
 Cindy Chieffo, CHIEF FINANCIAL OFFICER
 Elinor Josephson, DIRECTOR OF ENGAGEMENT AND PROGRAMMING
 Heather Erez, RJE, DIRECTOR OF YOUTH AND FAMILY EDUCATION AND ENGAGEMENT
 Ronni Graf, DIRECTOR OF EARLY LEARNING CENTER
 Susan Stallone, DIRECTOR OF SOCIAL JUSTICE
 Craig Sumberg, DIRECTOR OF DEVELOPMENT
 Mike Sirowitz, MAUSOLEUM DIRECTOR
 Natalie Cohen, DIRECTOR OF MARKETING AND COMMUNICATIONS
 Rita Diamond, DIRECTOR OF OPERATIONS
 Jason Reasor, DIRECTOR OF FACILITIES
 Robin Eisenberg, RJE, DIRECTOR OF JEWISH LEARNING AND LIVING EMERITA



**Past President
z"l - of blessed memory*

Schaefer Family Campus 333 Sw 4th Avenue | Boca Raton, FL 33432 | 561 391 8900

Beck Family Campus 9800 Yamato Road | Boca Raton, FL 33434 | 561 391 9091

tbeboca.org

Auracal

Senior Home Care, LLC



Home Health Aides, Certified Nursing Assistants, and Registered Nurses to assist you with:

- Personal Care • Companionship • Respite Care • Alzheimer's & Dementia Care • Medication Management
- Transportation • Meal Preparation • Light Housekeeping • Grocery Shopping • Post Surgery Care

Care in the Comfort of Your Home, Hospital, or Facility

Complimentary In-Home Consultation

Qualified and Compassionate Care

We Accept All Long Term Care Insurance Policies and Private Pay — Affordable Rates

CALL TODAY: 561.740.8667

1014 Gateway Blvd., Suite 101 • Boynton Beach

www.auracalshc.com

Licenses: Palm Beach NR30211558 • Broward NR30211706

Home Health Agency

35 Years of Trust, Quality & Compassionate Care



Services Include:

- Registered Nurse Supervision
- Memory Care - Alzheimer's and Dementia
- Personal Care - bathing, grooming, dressing
- Respite for Family Members
- Medication Reminders
- Hospital to Home Transition
- Transportation to Doctor's Appointments
- Meal Preparation and Light Housekeeping



CALL US TODAY : Complementary In-Home Consultation

Broward: (954) 309-2404 - Palm Beach: (561) 912-9511



Licensed, Accredited, Insured, Bonded
CareScout Network Provider Member



www.atlanticallcare.com Licenses: HHA20113096, HHA299996075



333 Sw 4th Avenue | Boca Raton, FL 33432

Non-Profit
Organization
U.S. POSTAGE
PAID
Boca Raton, FL
Permit No. 37

CURRENT RESIDENT OR

[Empty dotted box for address]

DATED MATERIAL | PLEASE RUSH

A Reform congregation affiliated with The Union for Reform Judaism



BRILLIANT
Dermatology
& Aesthetics

DERMATOLOGY PERFECTED

When you come to Brilliant Dermatology & Aesthetics, you know you are seeing Dr. Norton, a highly trained board certified dermatologist who provides exceptional & personalized patient care. Dr. Norton's passion for skin health and her one-on-one approach have made her a favorite in South Florida.



**MEDICAL
DERMATOLOGY**

**CUTANEOUS
SURGERY**

**COSMETIC
DERMATOLOGY**

**AESTHETIC
SERVICES**

**SKIN
CARE**

DELRAY BEACH 5162 Linton Blvd., Suite 203
www.brilliantdermatology.com
561.877.DERM (3376)

Elissa S. Norton, MD
Board Certified Dermatologist
MIT | Harvard University
University of Miami
School of Medicine